

**-- DEDICATED OUTDOOR AIR UNIT SCHEDULE --**

ITEM	SUPPLY			COOLING COIL LAT (°F) DB/WB	HOT GAS REHEAT CAP. (MBH)	NATURAL GAS HEAT			GREENHECK MODEL NO.	REMARKS
	CFM	ESP (IN. WG)	FAN HP			OUTPUT MBH	TURNDOWN RATIO	EFF. (%)		
DOAS-1	2500	0.7	3	54.3/54.1	73.5	160.0	16:1	80.0	RV-25-15I-G	(1)(2)

- (1) PACKAGED DEDICATED OUTDOOR AIR UNIT COMPLETE WITH DIRECT DRIVE PLENUM SUPPLY FAN WITH FACTORY-MOUNTED VARIABLE FREQUENCY DRIVE, INDIRECT GAS HEAT EXCHANGER, INVERTER SCROLL COMPRESSOR(S), MODULATING HOT GAS REHEAT, E.C. LEAD CONDENSER FAN, AND 2" PLEATED MERV 8 FILTERS.
- SUMMER DB / WB (°F)      WINTER DB (°F)
- (2) OUTDOOR AIR ENTERING UNIT      96.8°/76.1°      21.0°

**-- FAN SCHEDULE --**

ITEM	LOCATION	CFM	ESP (IN. WG)	HP	RPM	MAX. RPM	MAX. SONES	GREENHECK MODEL NO.	REMARKS
IT-F-1	GENERAL EXH.	790	0.30	1/4	820	1150	6.0	G-133-VG	(1)(2)(4)(5)
IT-F-2	GENERAL EXH.	730	0.30	1/4	800	1150	6.0	G-133-VG	(1)(2)(4)(5)
IT-F-3	MECH/ELEC	730	0.30	1/4	800	1150	6.0	G-133-VG	(1)(3)(4)(6)
IT-F-4	ELEC	2800	0.25	1	1220	1580	15.0	GB-161	(1)(2)(6)

- (1) COMPLETE WITH BACKDRAFT DAMPER, BIRDSCREEN, AND DISCONNECT MEANS.
- (2) PROVIDE WITH CURB ADAPTER AS REQUIRED.
- (3) PROVIDE WITH ROOF CURB.
- (4) PROVIDE WITH E.C. MOTOR AND MANUAL SPEED CONTROLLER.
- (5) CONTROL WITH FACILITY MANAGEMENT SYSTEM.
- (6) CONTROL WITH THERMOSTAT SET AT 85° F (ADJUSTABLE).

**-- BRANCH CONTROLLER SCHEDULE --**

ITEM	NO. OF PORT SETS	SERVED FROM	MITSUBISHI/TRANE MODEL NO.	REMARKS
IT-BC-1	16	IT-VRF-1	TCMBM1016	(1)
IT-BC-2	12	IT-VRF-2	TCMBM1012	(1)

- (1) REFRIGERANT PIPE SIZES AND ACCESSORIES REQUIRED SHALL BE DETERMINED BY EQUIPMENT MANUFACTURER FROM FIELD OBTAINED DIMENSIONS.

**-- INDOOR HEAT PUMP SCHEDULE --**

ITEM	SUPPLY CFM	ESP (IN. WG)	FAN MCA	DRIVE	COOLING CAP. MBH (1)		MITSUBISHI/TRANE MODEL NO.	REMARKS
					SENSIBLE	TOTAL		
IT-IHP-3	1480	0.40	3.5	DIRECT	31.7	42.0	PEAD-A42AA7	(2)
IT-IHP-4	1480	0.40	3.5	DIRECT	31.7	42.0	PEAD-A42AA7	(2)
IT-IHP-5	1480	0.40	3.5	DIRECT	31.7	42.0	PEAD-A42AA7	(2)
IT-IHP-6	1480	0.40	3.5	DIRECT	31.7	42.0	PEAD-A42AA7	(2)
IT-IHP-7	1480	0.40	3.5	DIRECT	31.7	42.0	PEAD-A42AA7	(2)

- (1) RATINGS IN ACCORDANCE WITH APPROPRIATE A.H.R.I. STANDARD.
- (2) MEDIUM STATIC, DUCTED INDOOR UNIT COMPLETE WITH WASHABLE FILTER, DISCONNECT MEANS, AND WALL CONTROLLER.

**-- OUTDOOR HEAT PUMP SCHEDULE --**

ITEM	COOLING CAP. MBH (1)	EER	HEATING CAP. MBH (1)		COP (1)		MITSUBISHI/TRANE MODEL NO.	REMARKS
			HI	LO	HI	LO		
OHP-T-3	10.7	--	--	--	--	--	PUY-A42NKA7	(2)
OHP-T-4	42.0	10.7	--	--	--	--	PUY-A42NKA7	(2)
OHP-T-5	42.0	10.7	--	--	--	--	PUY-A42NKA7	(2)
OHP-T-6	42.0	10.7	--	--	--	--	PUY-A42NKA7	(2)
OHP-T-7	42.0	10.7	--	--	--	--	PUY-A42NKA7	(2)

- (1) RATINGS IN ACCORDANCE WITH APPROPRIATE A.H.R.I. STANDARD.
- (2) COOLING ONLY (A/C) UNIT COMPLETE WITH LOW AMBIENT COOLING DOWN TO -10°F.

**-- VRF INDOOR HEAT PUMP SCHEDULE --**

ITEM	SUPPLY CFM	ESP (IN. WG)	FAN MCA	COOLING CAP. MBH (1)		HEATING CAP. MBH (1)	SERVED BY	MITSUBISHI/TRANE MODEL NO.	REMARKS
				SENSIBLE	TOTAL				
IT-IHP-1-1	810	--	0.6	21.2	30.0	34.0	IT-BC-1	TPLFYP030	(3) (6)
IT-IHP-1-2	810	--	0.6	21.2	30.0	34.0	IT-BC-1	TPLFYP030	(3) (6)
IT-IHP-1-3	810	--	0.6	21.2	30.0	34.0	IT-BC-1	TPLFYP030	(3) (6)
IT-IHP-1-4	490	--	0.4	9.9	12.0	13.5	IT-BC-1	TPLFYP012	(3) (6)
IT-IHP-1-5	490	--	0.4	6.5	8.0	9.0	IT-BC-1	TPLFYP008	(3) (6)
IT-IHP-1-6	300	--	0.2	5.5	6.0	6.7	IT-BC-1	TPLFYP006	(3) (6)
IT-IHP-1-7	490	--	0.4	6.5	8.0	9.0	IT-BC-1	TPLFYP008	(3) (6)
IT-IHP-1-8	300	--	0.2	5.5	6.0	6.7	IT-BC-1	TPLFYP006	(3) (6)
IT-IHP-1-9	280	--	0.2	4.3	5.0	5.6	IT-BC-1	TPLFYP005	(2) (6)
IT-IHP-1-10	335	--	0.3	8.4	12.0	13.5	IT-BC-1	TPLFYP012	(2) (6)
IT-IHP-1-11	280	--	0.2	4.3	5.0	5.6	IT-BC-1	TPLFYP005	(2) (6)
IT-IHP-1-12	280	--	0.2	4.3	5.0	5.6	IT-BC-1	TPLFYP005	(2) (6)
IT-IHP-1-13	280	--	0.2	4.3	5.0	5.6	IT-BC-1	TPLFYP005	(2) (6)
IT-IHP-1-14	280	--	0.2	4.3	5.0	5.6	IT-BC-1	TPLFYP005	(2) (6)
IT-IHP-1-15	300	--	0.2	5.5	6.0	6.7	IT-BC-1	TPLFYP006	(3) (6)
IT-IHP-1-16	880	0.50	2.8	19.3	24.0	27.0	IT-BC-1	TPEFYP024	(4) (6)
IT-IHP-2-1	1440	0.50	3.4	40.8	54.0	60.0	IT-BC-2	TPEFYP054	(4) (6)
IT-IHP-2-2	490	--	0.4	6.5	8.0	9.0	IT-BC-2	TPLFYP008	(3) (6)
IT-IHP-2-3	300	--	0.2	5.5	6.0	6.7	IT-BC-2	TPLFYP006	(3) (6)
IT-IHP-2-4	370	0.50	1.1	8.4	12.0	13.5	IT-BC-2	TPEFYP012	(4) (6)
IT-IHP-2-5	280	--	0.2	4.3	5.0	5.6	IT-BC-1	TPLFYP005	(2) (6)
IT-IHP-2-6	490	0.50	1.4	40.8	54.0	60.0	IT-BC-2	TPEFYP054	(4) (6)
IT-IHP-2-7	490	0.50	3.4	38.4	48.0	54.0	IT-BC-2	TPEFYP048	(4) (6)
IT-IHP-2-8	490	0.50	3.4	40.8	54.0	60.0	IT-BC-2	TPEFYP054	(4) (6)
IT-IHP-2-9	450	--	0.5	10.0	15.0	17.0	IT-BC-2	TPCFYP015	(5) (6)

- (1) RATINGS IN ACCORDANCE WITH APPROPRIATE A.H.R.I. STANDARD.
- (2) 2' X 2' NOM. 4-WAY CEILING CASSETTE INDOOR AIR HANDLING UNIT. PROVIDE WITH ELECTRICAL DISCONNECT MEANS, WASHABLE FILTER, AND WALL CONTROLLER.
- (3) 3' X 3' NOM. 4-WAY CEILING CASSETTE INDOOR AIR HANDLING UNIT. PROVIDE WITH ELECTRICAL DISCONNECT MEANS, WASHABLE FILTER, AND WALL CONTROLLER.
- (4) DUCTED (MEDIUM-STATIC) INDOOR AIR HANDLING UNIT. PROVIDE WITH ELECTRICAL DISCONNECT MEANS, WASHABLE FILTER, AND WALL CONTROLLER.
- (5) CEILING-SUSPENDED INDOOR AIR HANDLING UNIT. PROVIDE WITH ELECTRICAL DISCONNECT MEANS, WASHABLE FILTER, AND WALL CONTROLLER.
- (6) PROVIDE WITH BIPOLAR IONIZATION UNIT AS SCHEDULED.

**-- VRF OUTDOOR UNIT SCHEDULE --**

ITEM	COOLING CAP. MBH (1)	EER	HEATING CAP. MBH (1)		COP (1)		MITSUBISHI/TRANE MODEL NO.	REMARKS
			HI	LO	HI	LO		
IT-VRF-1	144.0	12.9	160.0	--	3.4	3.8	TURYE144	--
IT-VRF-2	240.0	12.2	270.0	--	3.5	--	TURYE240	--

- (1) RATINGS IN ACCORDANCE WITH APPROPRIATE A.H.R.I. STANDARD.

**-- ION GENERATORS --**

MAX. TREATED AIRFLOW	ELECTRODE PAIRS	DRY CONTACTS	POWER (VA)	VARIABLE OUTPUT WITH AIRFLOW	GLOBAL PLASMA MODEL NO.	REMARKS
2400	1	INCLUDED	4	INTEGRAL	GPS-FC24-AC	(1)(2)(3)

- (1) INSTALL ION GENERATORS IN SUPPLY AIR DUCT OF EACH UNIT INDICATED. PROVIDE MULTIPLE UNITS WHERE SUPPLY AIRFLOW EXCEEDS MAX TREATED AIRFLOW.
- (2) ION GENERATORS SHALL BE POWERED FROM THE 24V AC FAN CONTROL CIRCUIT. LOOSE TRANSFORMERS ARE NOT ACCEPTABLE.
- (3) FAULT RESET SHALL BE AUTOMATIC. MANUAL FUSE REPLACEMENT WILL NOT BE ACCEPTED.



The document is property of 2KM Architects, Inc. The unauthorized reproduction, copying, or otherwise use of this document is strictly prohibited and any infringement thereon may be subject to legal action. Copyright © 2020, 2KM Architects, Inc.



**KEY PLAN:**

Date	Description

**REVISIONS:**

Date	Description

**CCSD  
I.T./TRAINING  
DEPARTMENT**

FOR  
COLUMBIA COUNTY SCHOOL DISTRICT

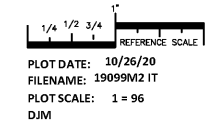
4395 RIVERWATCH PARKWAY  
EVANS, GA 30809

**DRAWING TITLE**

**HVAC SCHEDULE**

PROJECT NO.	20-04C	DRAWING NO.	
DATE	10/26/2020		
DRAWN BY	DJM		
PAPER	24"x36"		
ISSUE	CD		

**M4.2**



COPYRIGHT © 2020  
PRUETT, FORD & ASSOCIATES, INC.  
AUGUSTA, GA 30901 (706) 738-3959

W:\CURBERT\_JOBS\19099\_CCSO\_SUPPORT\_COMPLEX\19099M2.IT.DWG

PRINTED: 10/27/2020 1:35:00 PM