

GENERAL INFORMATION:

EXISTING BUILDING IS PRESENTLY PROTECTED BY A WET PIPE FIRE SPRINKLER SYSTEM.

SPRINKLER SYSTEM SHALL BE DESIGNED IN ACCORDANCE WITH THE FOLLOWING:

- NFPA 13 (2019 EDITION)
- GA FIRE CODE 120-3-3 (2020 EDITION)
- INTERNATIONAL BUILDING CODE (2018 EDITION)
- CONTRACT SPECIFICATIONS

REFER TO NFPA 25 REGARDING PRE-PLANNED SYSTEM IMPAIRMENTS FOR CORRECTIONS, ALTERATIONS OR IMPROVEMENTS.

PROVIDE SHOP DRAWINGS AND EQUIPMENT SUBMITTALS FOR REVIEW BY ARCHITECT, ENGINEER, COLUMBIA COUNTY FIRE MARSHAL AND OWNER.

EXACT LOCATIONS AND ROUGHING REQUIREMENTS FOR PIPING AND EQUIPMENT SHALL BE DETERMINED FROM ARCHITECTURAL DRAWINGS, LARGE SCALE DETAILS AND APPROVED MANUFACTURER'S SHOP DRAWINGS. PARTICULAR ATTENTION SHALL BE DIRECTED TO EQUIPMENT AND FINISHES FURNISHED UNDER OTHER DIVISIONS.

EXACT LOCATION OF PIPING SHALL BE DETERMINED BY JOB CONDITIONS. CONTRACTOR SHALL COORDINATE THE INSTALLATION OF PIPING WORK WITH THAT OF OTHER TRADES AND ARRANGE PIPING TO CLEAR STRUCTURAL MEMBERS AND DUCTWORK.

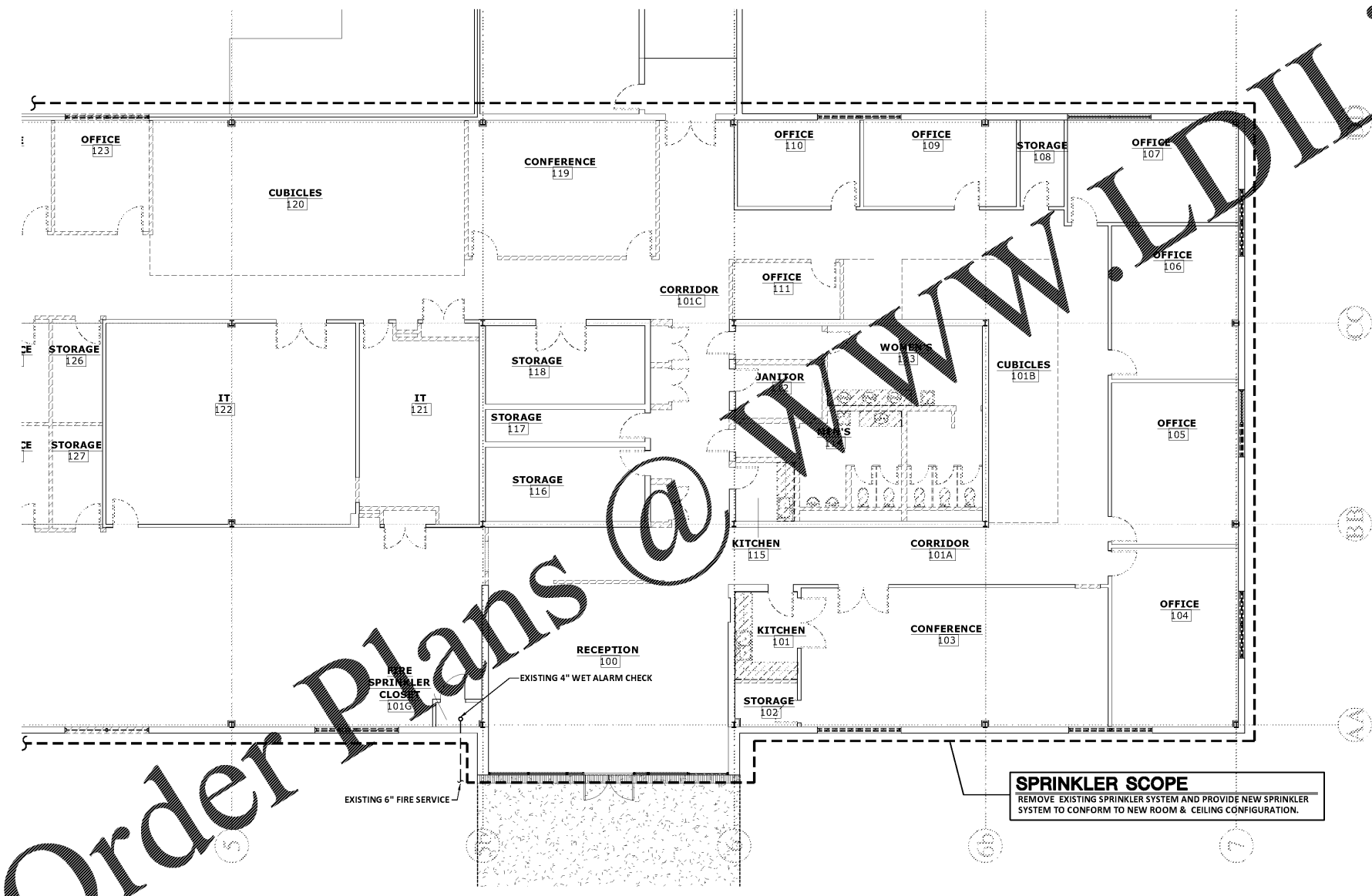
IN FIRE WALLS, PACK ANNULAR SPACE BETWEEN PIPE AND WALL WITH FIRESTOP COMPOUND IN ACCORDANCE WITH ITS M.I.L. LISTING.

PROVIDE WHITE RECESSED QUICK RESPONSE SPRINKLER IN NEW LAY-IN CEILINGS.

FLOW TEST DATA:

FLOW TEST WAS CONDUCTED ON MARCH 31, 2020 BY STEVE BANKS OF CENTURY FIRE PROTECTION. THE HYDRANTS ON THE FIRE LOOP AT THE BACKSIDE OF THE BUILDING WERE TESTED.

STATIC PRESSURE - 70 PSI
RESIDUAL PRESSURE - 65 PSI
FLOW - 868 GPM

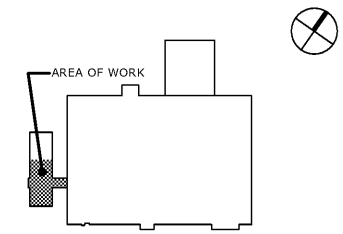


SPRINKLER SCOPE
REMOVE EXISTING SPRINKLER SYSTEM AND PROVIDE NEW SPRINKLER SYSTEM TO CONFORM TO NEW ROOM & CEILING CONFIGURATION.

1 FIRE PROTECTION DEMOLITION PLAN
FP1.1
SCALE: 1/8" = 1'-0"

Order Plans @ www.dilines.com

KEY PLAN:



REVISIONS:

| Date | Description |
|------|-------------|
| | |
| | |
| | |
| | |
| | |

**CCSD
I.T./TRAINING
DEPARTMENT**

FOR
COLUMBIA COUNTY SCHOOL DISTRICT

4395 RIVERWATCH PARKWAY
EVANS, GA 30809

DRAWING TITLE

**FIRE PROTECTION
DEMOLITION PLAN**

| | | | |
|-------------|------------|--------------|--|
| PROJECT NO. | 20-04C | DRAWING NO. | |
| DATE | 10/26/2020 | FP1.1 | |
| DRAWN BY | JCP | | |
| PAPER | 24"x36" | | |
| ISSUE | CD | | |

1" REFERENCE SCALE
1/4" 1/2" 3/4"

PLOT DATE: 10/26/20
FILENAME: 19099FP1.IT
PLOT SCALE: 1 = 96
MFJ

COPYRIGHT © 2020
PRUETT, FORD & ASSOCIATES, INC.
AUGUSTA, GA 30901 (706) 732-3055