

This document is the property of 2KM Architects, Inc. The unauthorized reproduction, copying, or otherwise use of this document is strictly prohibited and any infringement thereon may be subject to legal action. Copyright © 2020, 2KM Architects, Inc.

CASEWORK LEGEND

1. BACKSPLASH (MATCH COUNTERTOP MATERIAL)
2. COUNTERTOP (SOLID SURFACE)
3. PLUMBING FIXTURE (SEE PLUMBING PLAN)
4. LAMINATED ADJUSTABLE SHELVES
5. 6" BASE (SEE FINISH SCHEDULE)
6. REMOVABLE PANELS (COLOR BY ARCHITECT)
7. 1 1/2" WIDE (MIN. FILLER)
8. APRON (MATCH VERTICAL LAM)
9. 1 1/2" WIDE PLAM END PANEL

GENERAL NOTES:

- A. FIELD MEASURE AND VERIFY PARTITION OPENINGS AT CASEWORK LOCATIONS.
- B. WHERE COUNTERTOP SEAMS ARE REQUIRED, INDICATE PROPOSED LOCATIONS ON SHOP DRAWINGS.
- C. ALL SOLID SURFACE AND PLAM COLORS TO BE SELECTED BY ARCHITECT.
- D. PROVIDE OPENINGS IN EACH SPACER FOR ELECTRICAL AND LOW VOLTAGE WIRING.
- E. FOR ALL CONDITIONS WHERE BACK AND/OR END PANELS ARE NOT NOTED TO RECEIVE BASE, SCRIBE PANELS FOR A FLUSH TERMINATION WITH FLOORING. PROVIDE SEALANT TO MATCH PLAM COLORS AND SEAL ENTIRE PERIMETER @ ALL LOCATIONS.

KEY PLAN:

| REVISIONS: | |
|------------|-------------|
| Date | Description |
| | |
| | |
| | |

**CCSD
 I.T./TRAINING
 DEPARTMENT**

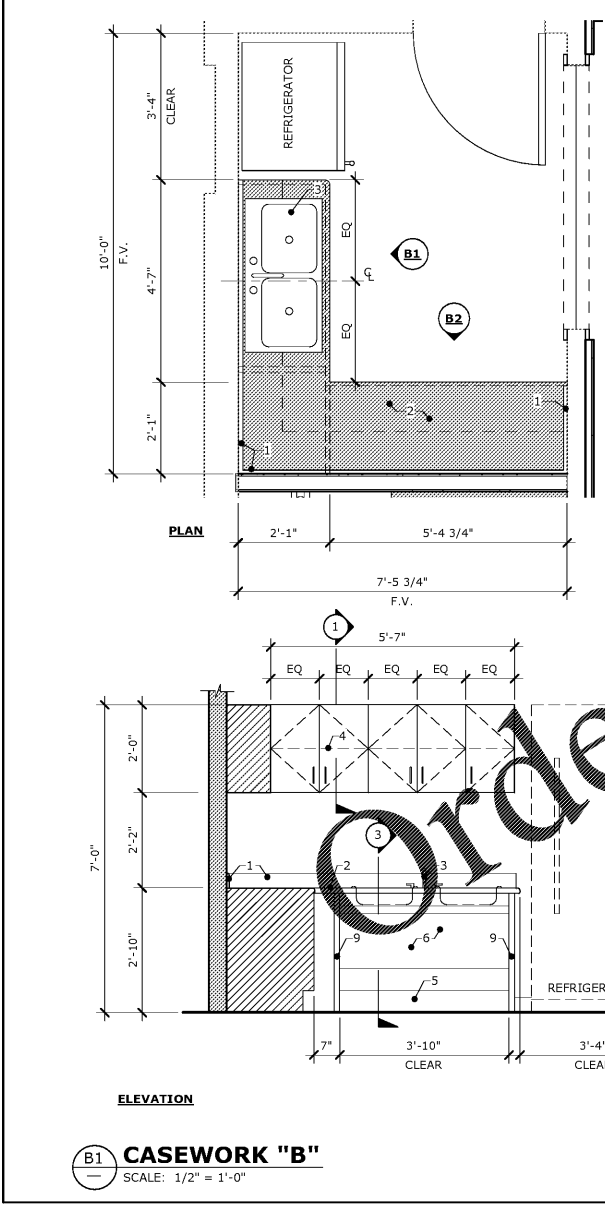
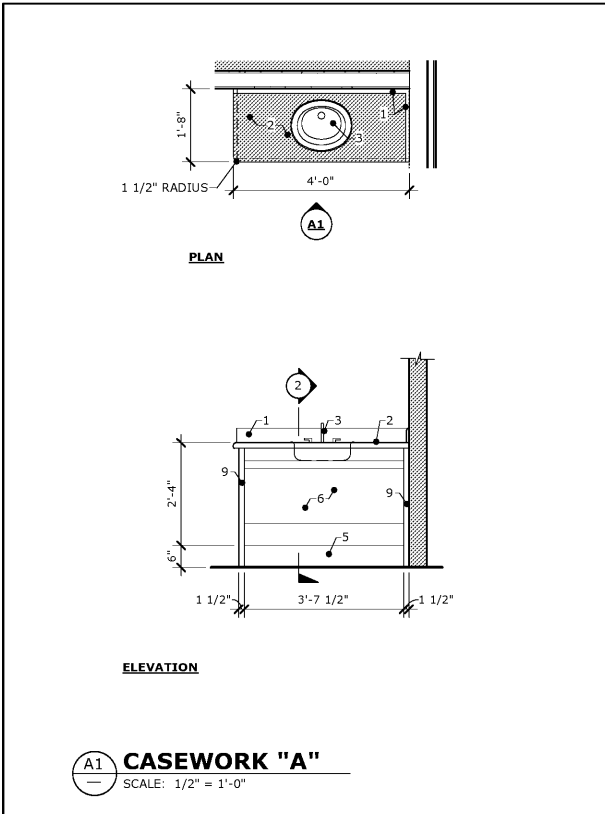
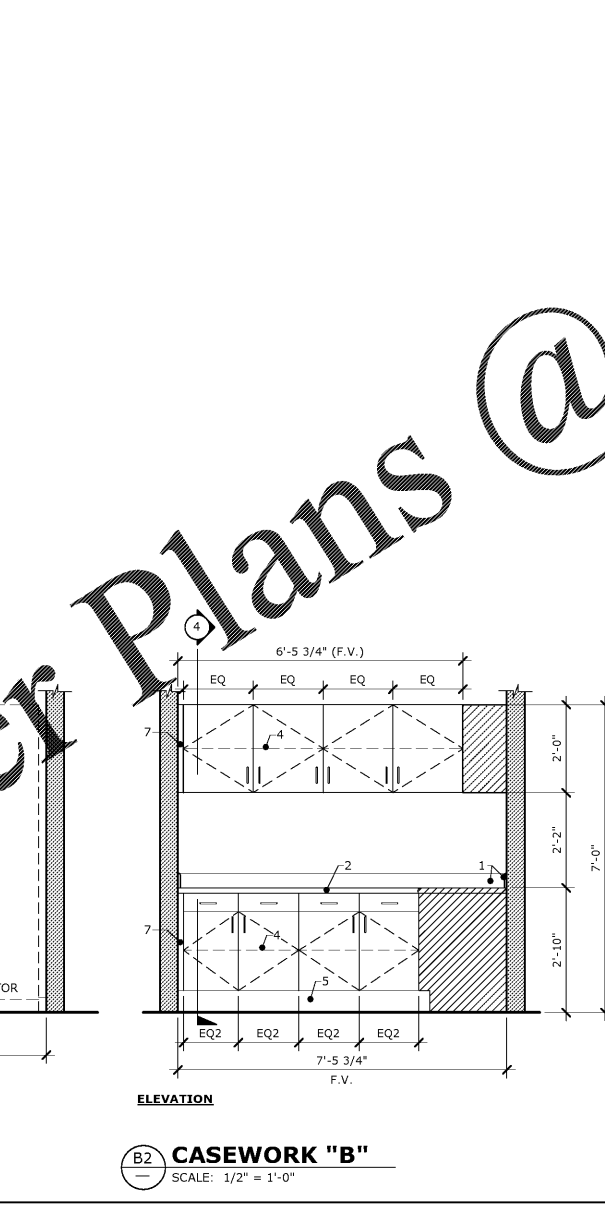
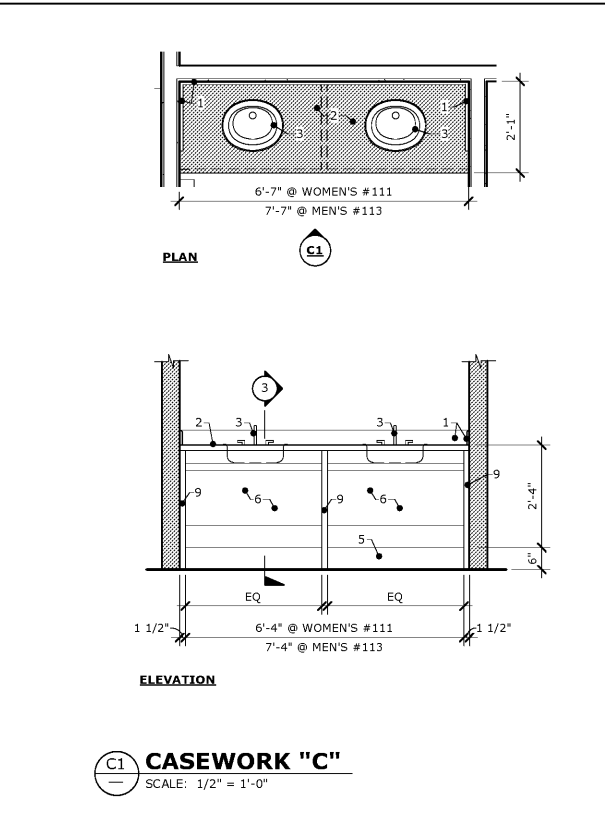
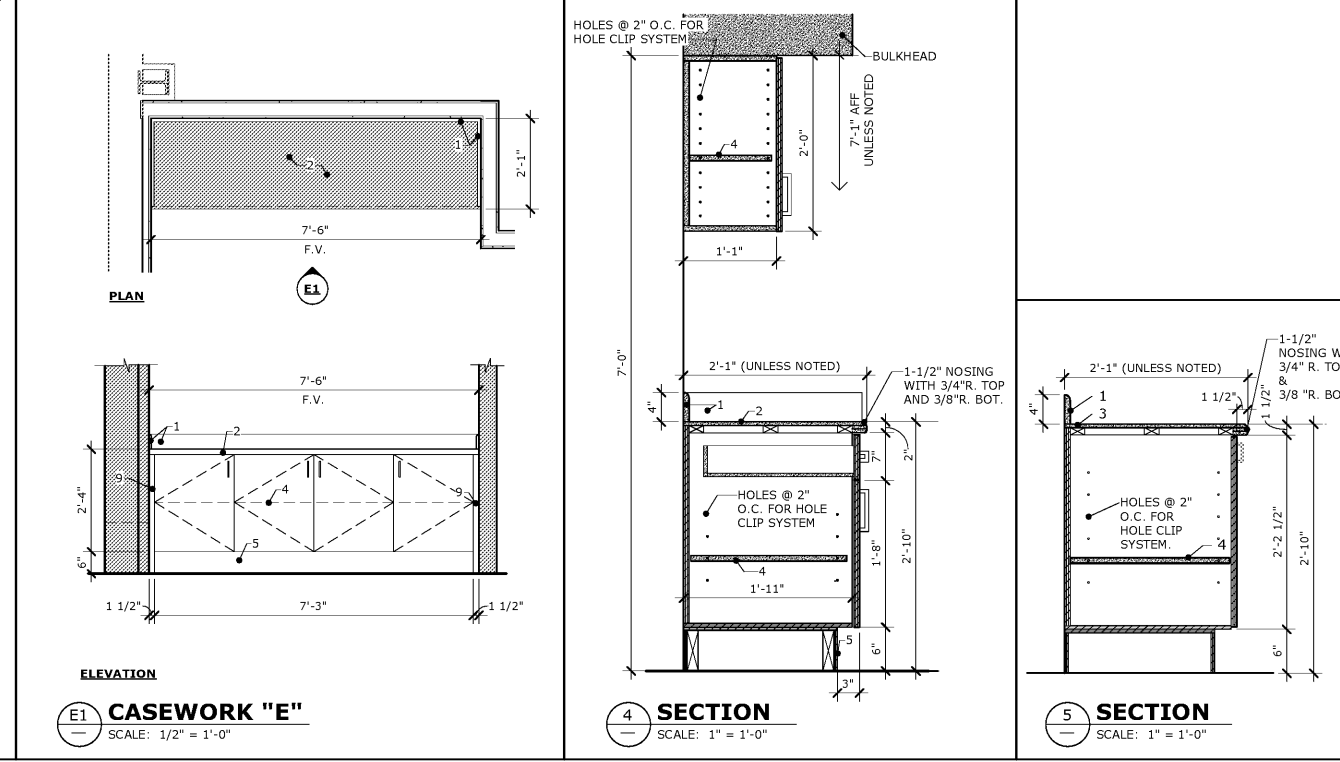
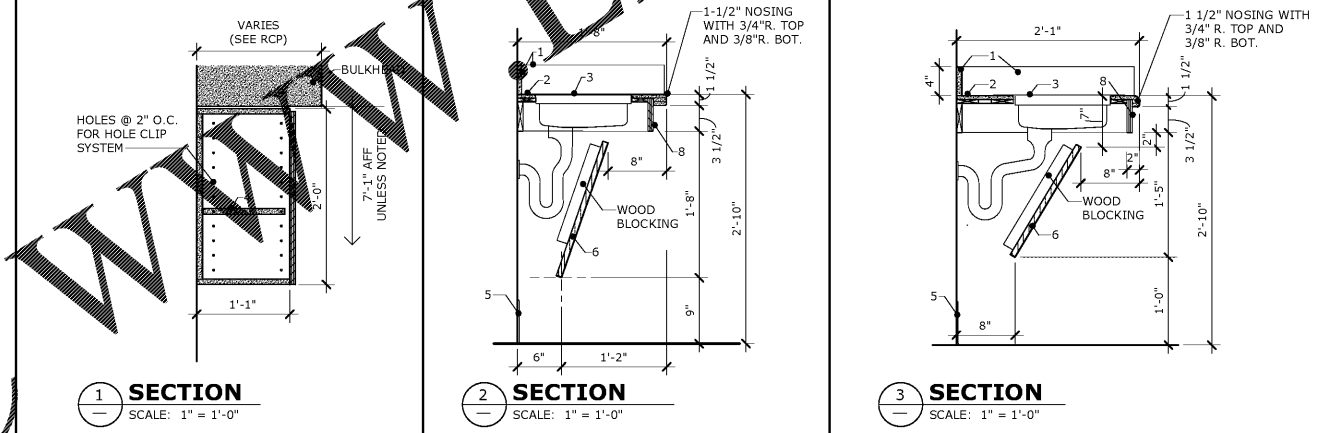
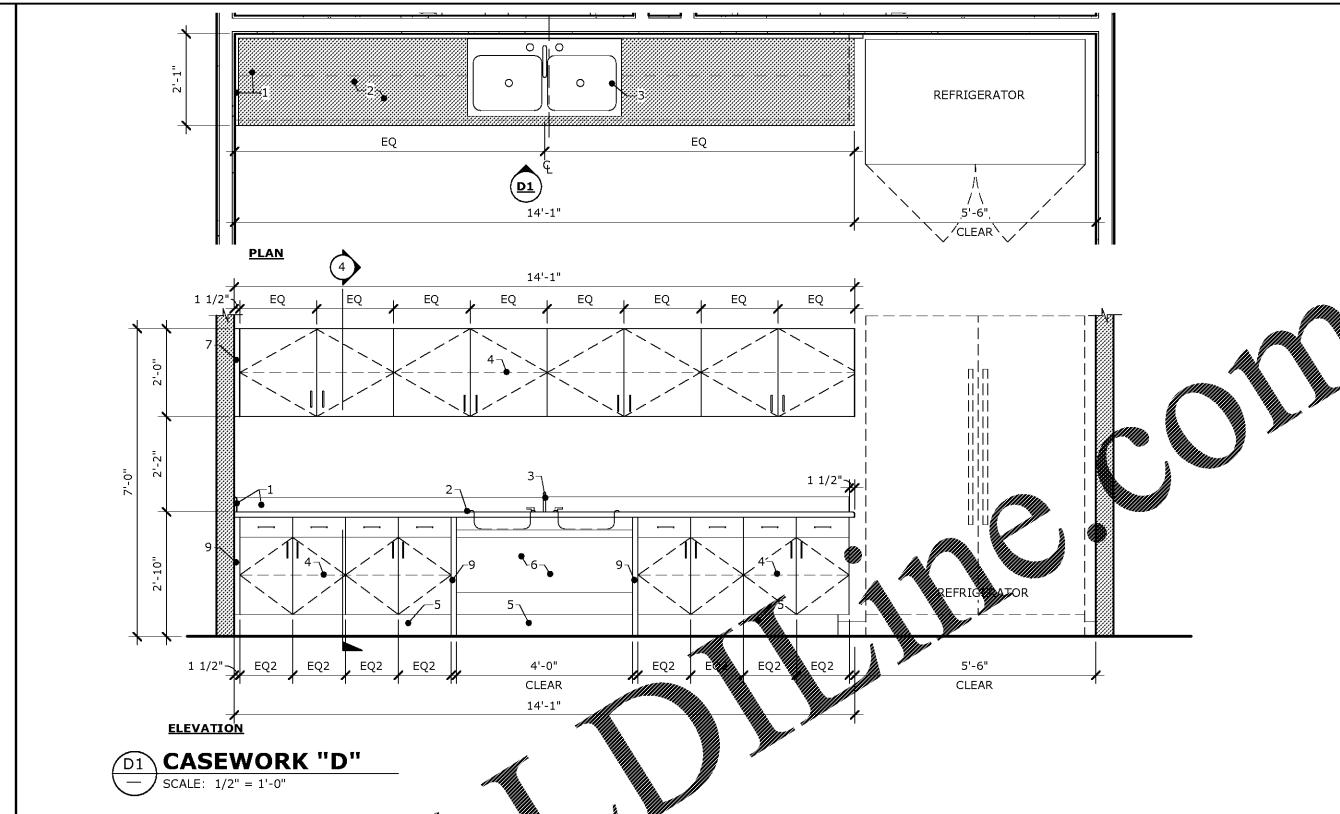
FOR
 COLUMBIA COUNTY SCHOOL DISTRICT

4395 RIVERWATCH PARKWAY
 EVANS, GA 30809

DRAWING TITLE

CASEWORK

| | |
|--------------------|-------------|
| PROJECT NO. 20-04C | DRAWING NO. |
| DATE 10/26/2020 | A4.1 |
| DRAWN BY RS | |
| PAPER 24"x36" | |
| ISSUE CD | |



PRINTED: 10/27/2020 3:49:39 PM
 Z:\netw\Projects\2020\Projects\20-04C-CCSD-I.T. Design\Drawings\CD Construction Documents\W.L.F.\MODEL.IT.DWF CD-14

Order Plans @ WWW.LDLINE.COM