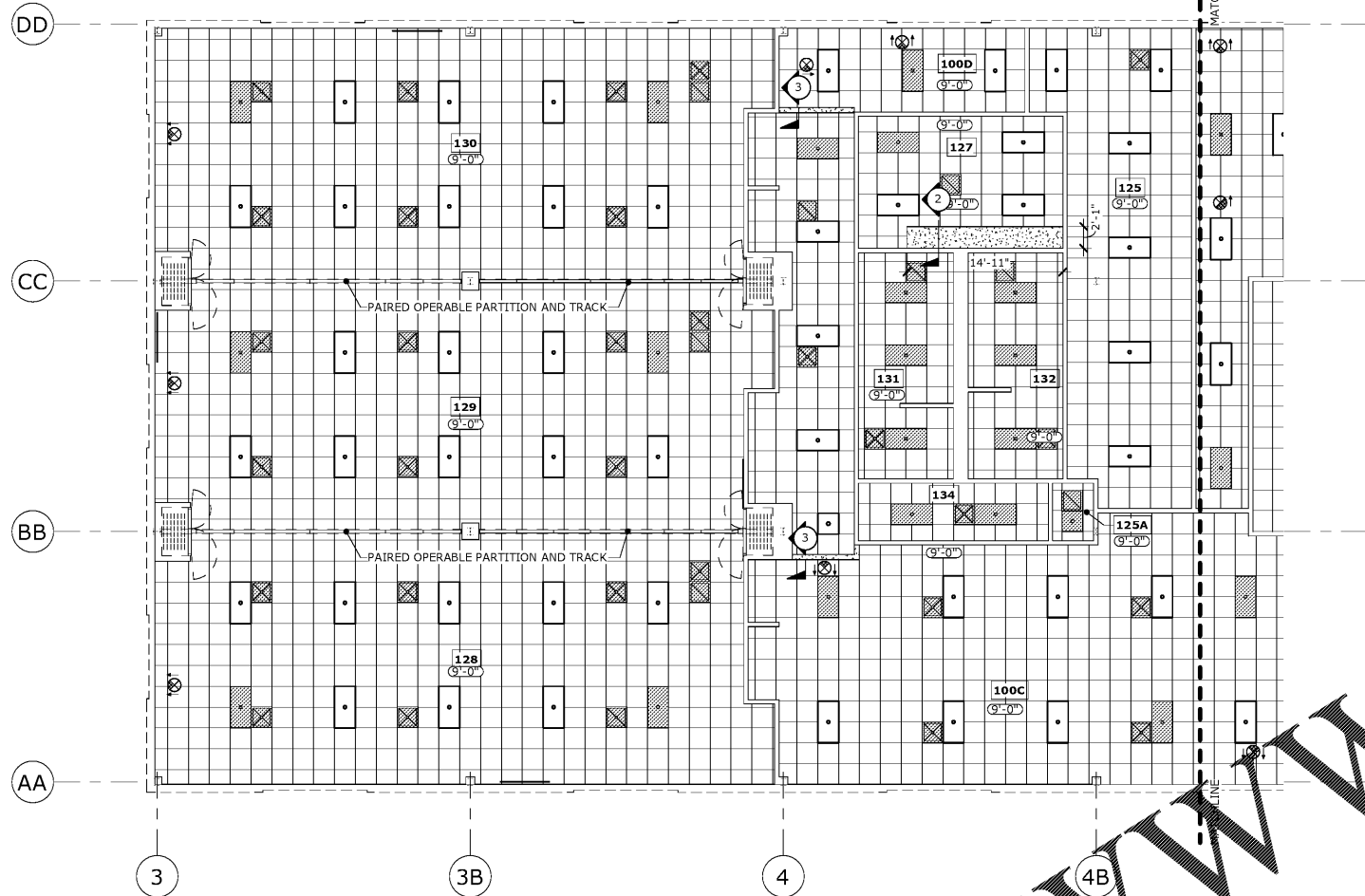


Z:\McN\Projects\2020\Projects\20-04-CCSD-I.T. Dept\DRAWINGS\CD Construction Documents\DWG\_I.T\_MODEL.IT\_DRF\_CD.rvt

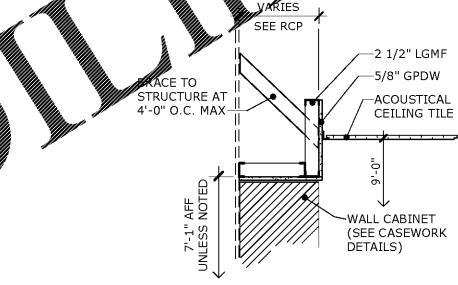
PRINTED: 10/27/2020 3:49:13 PM



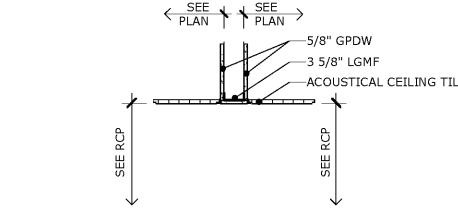
**1 REFLECTED CEILING PLAN**  
SCALE: 1/8" = 1'-0"



- RCP LEGEND:**
- NEW CEILING OUTLINE
  - - - WALL OUTLINE
  - NEW 2X2 ACOUSTICAL CEILING TILE & SUSPENDED GRID
  - [Pattern] GPDW CEILING/ BULKHEAD
  - [Pattern] 2 X 4 EMERGENCY LIGHT FIXTURE
  - [Symbol] 2 X 4 LIGHT FIXTURE
  - [Symbol] 2 X 2 L.E.D. LIGHT FIXTURE
  - [Symbol] HVAC SUPPLY DIFFUSER
  - [Symbol] HVAC RETURN GRILLE
  - [Symbol] EXIT SIGN



**2 SECTION @ WALL CABINET**  
SCALE: 3/4" = 1'-0"

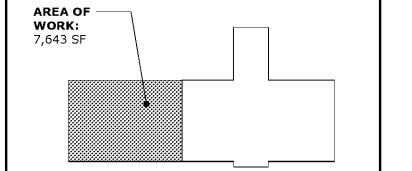


**3 SECTION @ CEILING**  
SCALE: 3/4" = 1'-0"

**2.K.M.** ARCHITECTS, INC.  
ROBERT L. MAULDIN  
10/26/2020  
REGISTERED ARCHITECT  
529 GREENE ST. AUGUSTA, GA 30901  
(706) 736-3333 - FAX (706) 736-7100

This document is property of 2KM Architects, Inc. The unauthorized reproduction, copying, or otherwise use of this document is strictly prohibited and any infringement thereupon may be subject to legal action. Copyright © 2020, 2KM Architects, Inc.

**KEY PLAN:**



**REVISIONS:**

Date	Description

**CCSD  
I.T./TRAINING  
DEPARTMENT**

FOR  
COLUMBIA COUNTY SCHOOL DISTRICT

4395 RIVERWATCH PARKWAY  
EVANS, GA 30809

**DRAWING TITLE**  
**REFLECTED CEILING  
PLAN**

PROJECT NO. 20-04C	DRAWING NO.
DATE 10/26/2020	<b>A1.5</b>
DRAWN BY MP	
PAPER 24"x36"	
ISSUE CD	

Order Plans @ [WWW.LDILine.com](http://WWW.LDILine.com)