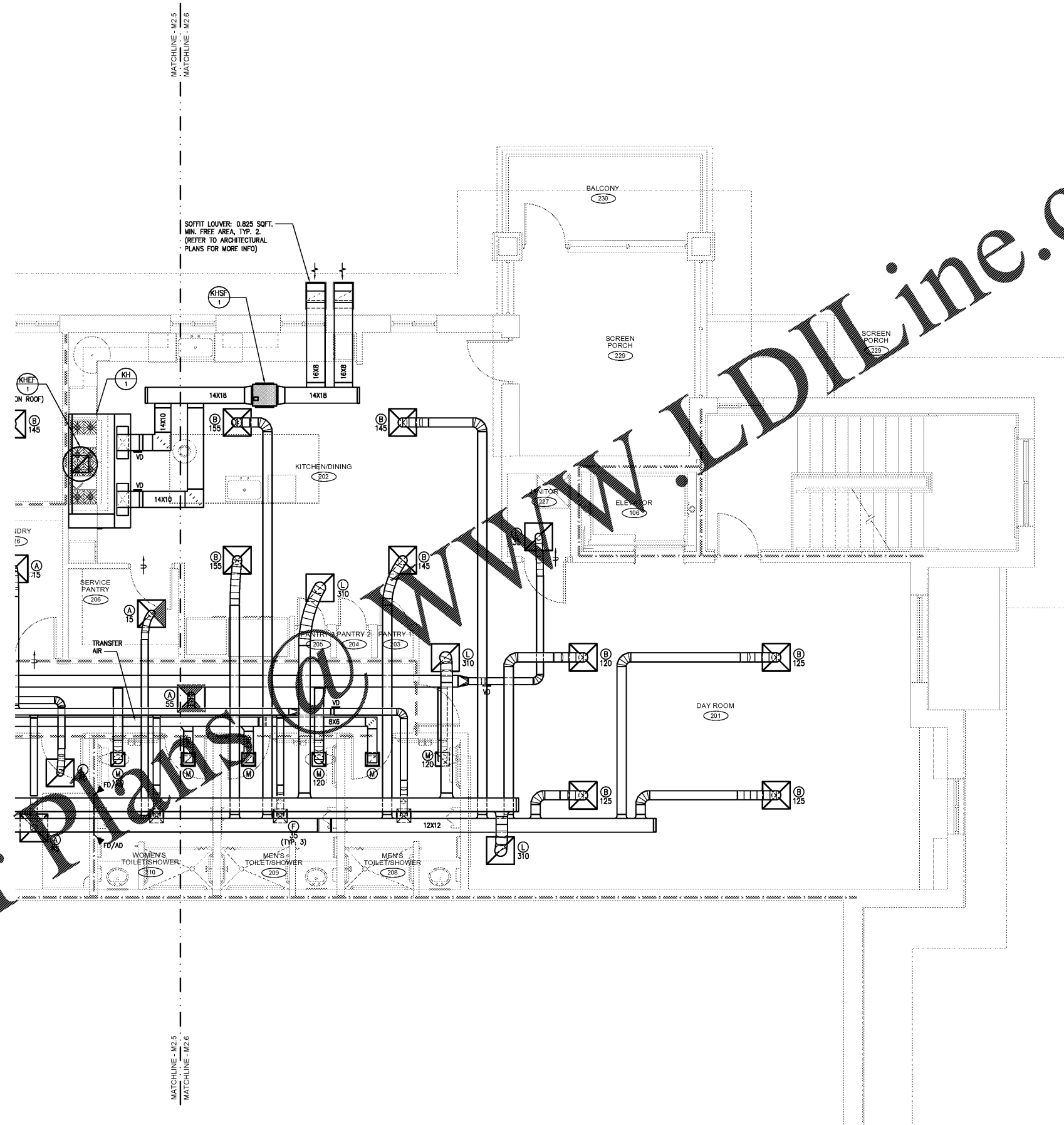


05-25-20 Joshua Wicks, 201915-0002 FGA CPA Fire Station 17-Mechanical-M2.5, M2.3, M2.4, M2.5, M2.6, M2.7, M2.8, M2.9, M2.10, M2.11, M2.12, M2.13, M2.14, M2.15, M2.16, M2.17, M2.18, M2.19, M2.20, M2.21, M2.22, M2.23, M2.24, M2.25, M2.26, M2.27, M2.28, M2.29, M2.30, M2.31, M2.32, M2.33, M2.34, M2.35, M2.36, M2.37, M2.38, M2.39, M2.40, M2.41, M2.42, M2.43, M2.44, M2.45, M2.46, M2.47, M2.48, M2.49, M2.50, M2.51, M2.52, M2.53, M2.54, M2.55, M2.56, M2.57, M2.58, M2.59, M2.60, M2.61, M2.62, M2.63, M2.64, M2.65, M2.66, M2.67, M2.68, M2.69, M2.70, M2.71, M2.72, M2.73, M2.74, M2.75, M2.76, M2.77, M2.78, M2.79, M2.80, M2.81, M2.82, M2.83, M2.84, M2.85, M2.86, M2.87, M2.88, M2.89, M2.90, M2.91, M2.92, M2.93, M2.94, M2.95, M2.96, M2.97, M2.98, M2.99, M2.100

Order Plans @ www.LDILine.com



- CONTRACTOR SHALL INSTALL MECHANICAL EQUIPMENT IN ACCORDANCE WITH ALL STATE AND LOCAL CODES.
- CONTRACTOR SHALL BE RESPONSIBLE FOR ALL TRANSITIONS, FITTINGS, ELBOWS, DUCTWORK, PIPING, SUPPORTS, ETC. NECESSARY FOR A PROPER INSTALLATION AND OPERATION OF A NEW HVAC SYSTEM.
- CONTRACTOR SHALL BE RESPONSIBLE FOR COORDINATION OF INSTALLATION WORK WITH OTHER TRADES TO AVOID CONFLICTS.
- CONTRACTOR SHALL COORDINATE EXACT LOCATIONS OF NEW MECHANICAL EQUIPMENT WITH NEW LIGHT LOCATIONS, TILE LOCATIONS. REFER TO ARCHITECT'S REFLECTED CEILING PLAN LAYOUT.
- ALL DIMENSIONS SHOWN ON DRAWINGS ARE CLEAR INSIDE DIMENSIONS.
- DUCT SMOKE DETECTORS SHOWN ON PLANS ARE TO BE INSTALLED IN ACCORDANCE WITH MANUFACTURER'S INSTRUCTIONS FOR EXIST/OPTIMUM LOCATION IN DUCT.
- ANY WALL, ROOF, FLOOR, EQUIPMENT, ETC. DAMAGED DURING CONSTRUCTION SHALL BE REPAIRED TO MATCH EXISTING. COORDINATE WITH GENERAL CONTRACTOR AND/OR OWNER.

GENERAL NOTES K1 NTS

- ALL BRANCH DUCTWORK SHALL BE EQUIPPED WITH A CONICAL, BELLMOUTH OR 45° TAKE OFF WITH VOLUME DAMPER. DAMPER SHALL BE STANDOFF TYPE WITH INDICATING AND LOCKING QUADRANT HANDLE. REFER TO MECHANICAL DETAILS FOR APPROVED BRANCH DUCT TAKE-OFF TYPES.
- PROVIDE OPPOSED BLADE DAMPER ADJUSTABLE FROM FACE OF AIR DEVICE. FOR ALL AIR DEVICES LOCATED IN HARD CEILINGS.
- BRANCH DUCT TAKE-OFFS ARE SHOWN DIAGRAMMATICALLY. WHERE SIDE DIMENSION OF DUCT DOES NOT ACCOMMODATE HEIGHT OF TAKE-OFF, CONTRACTOR MAY CONNECT TO BOTTOM OR TOP OF MAIN DUCT.

BRANCH DUCT NOTES K1 NTS

ENGINEERING MATRIX, INC.
 CONSULTING ENGINEERS
 2880 SCHEERER DRIVE, SUITE 640
 ST. PETERSBURG, FLORIDA 33716
 (727) 321-4668 FAX (727) 321-8082 EMAIL: enr@matrixinc.com
 CERT. OF AUTHORIZATION NO. 42898
 © 2019 Engineering Matrix, Inc. DRAWN BY: RCM CHECKED BY: JSW

FleischmanGarcia
 ARCHITECTS
 100 SOUTH AVENUE NORTH
 SUITE 100
 TAMPA, FLORIDA 33602
 PHONE (813) 281-1400
 FAX (813) 281-1400
 REGISTRATION NUMBER: AA 000217

**Pasco County
 Fire & Rescue Station
 No. 17
 New Port Richey, Florida**

THIS PERSON AND DRAWING ARE THE SOLE PROPERTY OF FLEISCHMAN-GARCIA ARCHITECTS. NO PART OF THIS WORK MAY BE REPRODUCED WITHOUT PERMISSION FROM FLEISCHMAN-GARCIA ARCHITECTS.
 I CERTIFY TO THE BEST OF MY KNOWLEDGE THAT THESE DRAWINGS COMPLY WITH ALL RELEVANT BUILDING CODES.

FGA PROJECT NUMBER
19039

ISSUE DATE
05-25-20

REVISIONS
 △ DATE: _____
 △ DATE: _____
 △ DATE: _____

SHEET NUMBER
M2.6

MECHANICAL SECOND FLOOR ENLARGED PLAN - EAST A3 1/4"=1'