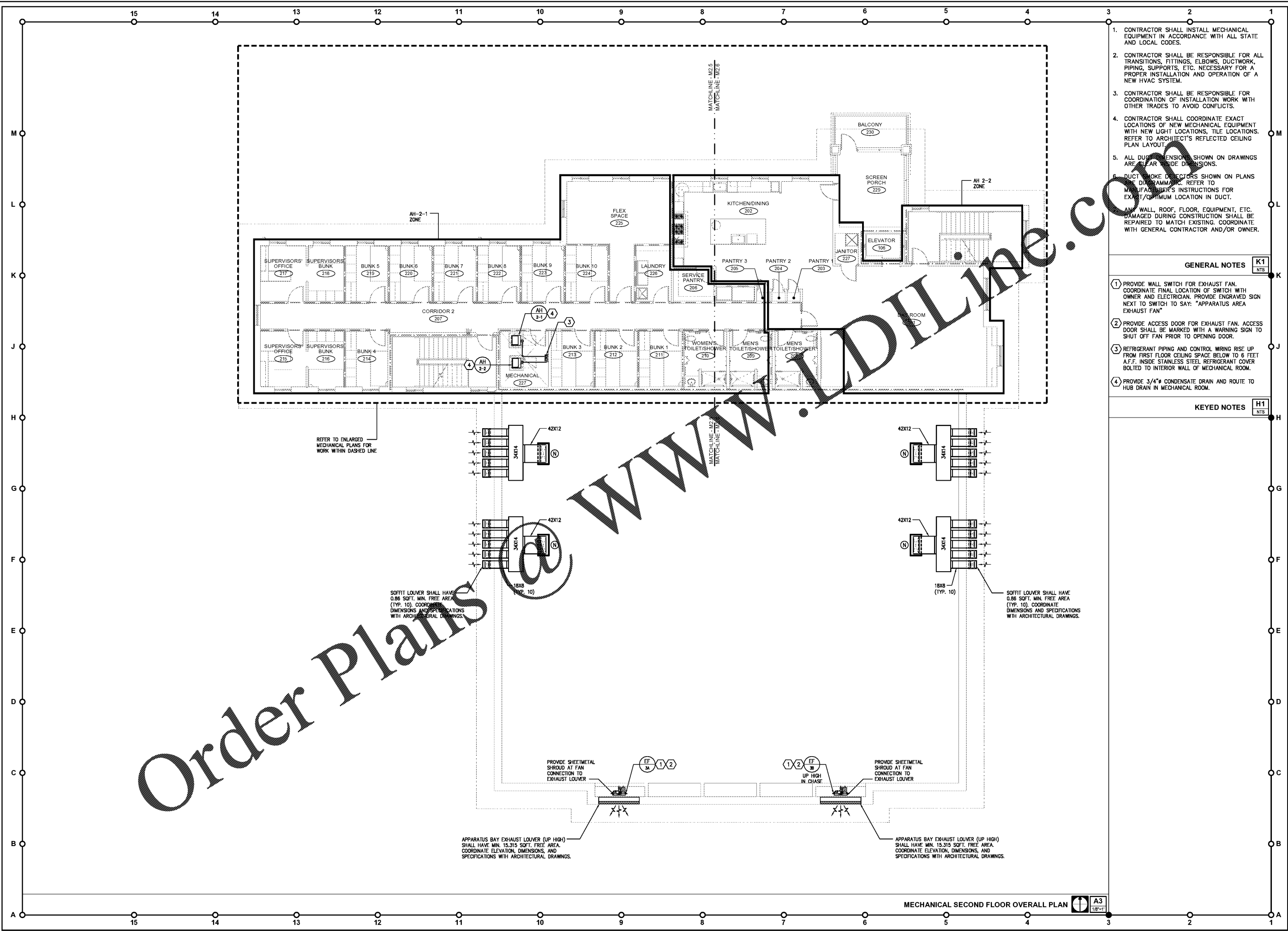


05/26/20 Joanna Wicks\20191015-0002 FGA CPA Fire Station 1\Mechanical\19-000\_M2\_1\_M2\_2\_Overall Floor Plans.dwg



Order Plans

WWW.IDIline.com

- CONTRACTOR SHALL INSTALL MECHANICAL EQUIPMENT IN ACCORDANCE WITH ALL STATE AND LOCAL CODES.
- CONTRACTOR SHALL BE RESPONSIBLE FOR ALL TRANSITIONS, FITTINGS, ELBOWS, DUCTWORK, PIPING, SUPPORTS, ETC. NECESSARY FOR A PROPER INSTALLATION AND OPERATION OF A NEW HVAC SYSTEM.
- CONTRACTOR SHALL BE RESPONSIBLE FOR COORDINATION OF INSTALLATION WORK WITH OTHER TRADES TO AVOID CONFLICTS.
- CONTRACTOR SHALL COORDINATE EXACT LOCATIONS OF NEW MECHANICAL EQUIPMENT WITH NEW LIGHT LOCATIONS, TILE LOCATIONS. REFER TO ARCHITECT'S REFLECTED CEILING PLAN LAYOUT.
- ALL DIMENSIONS SHOWN ON DRAWINGS ARE CLEAR INSIDE DIMENSIONS.
- DUCT SMOKE DETECTORS SHOWN ON PLANS SHALL BE INSTALLED IN ACCORDANCE WITH MANUFACTURER'S INSTRUCTIONS FOR EXACT/OPTIMUM LOCATION IN DUCT.
- ANY WALL, ROOF, FLOOR, EQUIPMENT, ETC. DAMAGED DURING CONSTRUCTION SHALL BE REPAIRED TO MATCH EXISTING. COORDINATE WITH GENERAL CONTRACTOR AND/OR OWNER.

GENERAL NOTES

- PROVIDE WALL SWITCH FOR EXHAUST FAN. COORDINATE FINAL LOCATION OF SWITCH WITH OWNER AND ELECTRICIAN. PROVIDE ENGRAVED SIGN NEXT TO SWITCH TO SAY: "APPARATUS AREA EXHAUST FAN"
- PROVIDE ACCESS DOOR FOR EXHAUST FAN. ACCESS DOOR SHALL BE MARKED WITH A WARNING SIGN TO SHUT OFF FAN PRIOR TO OPENING DOOR.
- REFRIGERANT PIPING AND CONTROL WIRING RISE UP FROM FIRST FLOOR CEILING SPACE BELOW TO 6 FEET A.F.F. INSIDE STAINLESS STEEL REFRIGERANT COVER BOLTED TO INTERIOR WALL OF MECHANICAL ROOM.
- PROVIDE 3/4" CONDENSATE DRAIN AND ROUTE TO HUB DRAIN IN MECHANICAL ROOM.

KEYED NOTES

PROVIDE SHEETMETAL SHROUD AT FAN CONNECTION TO EXHAUST LOUVER

UP HIGH IN CHASE

PROVIDE SHEETMETAL SHROUD AT FAN CONNECTION TO EXHAUST LOUVER

APPARATUS BAY EXHAUST LOUVER (UP HIGH) SHALL HAVE MIN. 15.315 SQFT. FREE AREA. COORDINATE ELEVATION, DIMENSIONS, AND SPECIFICATIONS WITH ARCHITECTURAL DRAWINGS.

APPARATUS BAY EXHAUST LOUVER (UP HIGH) SHALL HAVE MIN. 15.315 SQFT. FREE AREA. COORDINATE ELEVATION, DIMENSIONS, AND SPECIFICATIONS WITH ARCHITECTURAL DRAWINGS.

REFER TO ENLARGED MECHANICAL PLANS FOR WORK WITHIN DASHED LINE

SOFFIT LOUVER SHALL HAVE 0.86 SQFT. MIN. FREE AREA (TYP. 10). COORDINATE DIMENSIONS AND SPECIFICATIONS WITH ARCHITECTURAL DRAWINGS.

SOFFIT LOUVER SHALL HAVE 0.86 SQFT. MIN. FREE AREA (TYP. 10). COORDINATE DIMENSIONS AND SPECIFICATIONS WITH ARCHITECTURAL DRAWINGS.

**ENGINEERING MATRIX, INC.**  
 CONSULTING ENGINEERS  
 2880 SCHEERER DRIVE, SUITE 640  
 ST. PETERSBURG, FLORIDA, 33716  
 (727) 321-4668 FAX (727) 321-8082 EMAIL: ematrix@matrixinc.com  
 CERT. OF AUTHORIZATION NO. 4898  
 © 2019 Engineering Matrix, Inc. DRAWN BY: RCM CHECKED BY: JSW

**FleischmanGarcia**  
 MECHANICAL ENGINEERS  
 2511 W. PARK AVENUE, SUITE 300  
 TAMPA, FLORIDA 33606  
 PHONE (813) 281-4000  
 FAX (813) 281-3000  
 REGISTRATION NUMBER: AA 000227

**Pasco County  
 Fire & Rescue Station  
 No. 17**  
 New Port Richey, Florida

THIS PERSON AND DRAWING IS THE SOLE PROPERTY OF PASCO COUNTY. IT IS TO BE USED ONLY FOR THE PROJECT AND SHALL NOT BE REPRODUCED OR TRANSMITTED IN ANY FORM OR BY ANY MEANS, ELECTRONIC OR MECHANICAL, INCLUDING PHOTOCOPYING, RECORDING, OR BY ANY INFORMATION STORAGE AND RETRIEVAL SYSTEM. WITHOUT THE WRITTEN PERMISSION OF PASCO COUNTY, ANY REPRODUCTION OR TRANSMISSION IS STRICTLY PROHIBITED.

FGA PROJECT NUMBER  
19039

ISSUE DATE  
05-25-20

REVISIONS	
△	DATE: _____
△	DATE: _____
△	DATE: _____

SHEET NUMBER  
M2.2

MECHANICAL SECOND FLOOR OVERALL PLAN A3 1/8"=1'