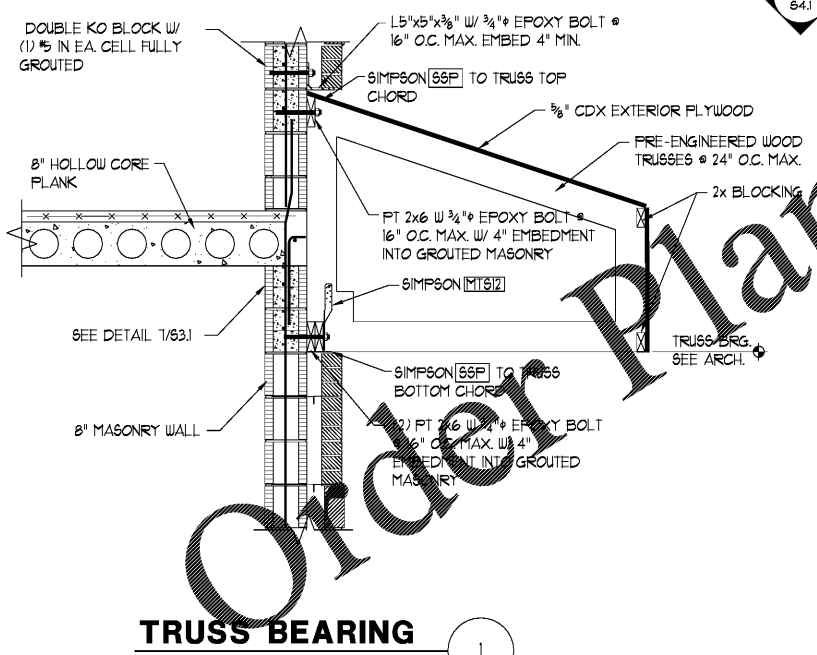


PRE-ENGINEERED WOOD TRUSSES @ 2'-0" O.C. MAX. PROVIDE TRUSS AGAINST SIDE WALL @ EA. END W/ 1/2" x 2 1/4" MASONRY SCREWS THROUGH TOP & BOTTOM CHORDS TO MASONRY @ 6" O.C.

- FLOOR FRAMING PLAN NOTES:
- FLOOR SLAB TO BE 8" THICK PRECAST HOLLOW CORE CONCRETE PLANK WITH MIN. 2" STRUCTURAL CONCRETE TOPPING @ CROWN & REINFORCED W/ 6x6-W4xW4 WUF IN SHEETS UNO.
  - TOP OF FLOOR EL. PRECAST PLANK BEARING EL. 2ND FLOOR 12'-2" 11'-4"
  - PRECAST PLANK JOINTS INDICATE DIRECTION OF SPAN. JOINT SPACING IS SHOWN FOR GRAPHIC PURPOSES ONLY. PRECAST MANUFACTURER TO DETERMINE THE EXACT SPACING OF PRECAST PLANKS.
  - GROUT ALL PRECAST SLAB JOINTS.
  - PRECAST SLAB BEARING = 3 1/2" MIN. UNO. PRECAST SIDE LAP = 2" MIN. UNO.
  - SEE MECHANICAL & ARCH. DUGS FOR EXACT SIZE AND LOCATION OF FLOOR PENETRATIONS.
  - COORDINATE ALL DIMENSIONS AND ELEVATIONS W/ ARCH. DUGS.
  - COORDINATE SIZES & LOCATIONS OF ALL MECHANICAL, ELECTRICAL & PLUMBING OPENINGS & PENETRATIONS THROUGH PRECAST PLANK & WALLS.
  - REFER TO FOUNDATION PLAN FOR CONCRETE COLUMN DESIGNATIONS. UNO.



TRUSS BEARING

SECOND FLOOR FRAMING PLAN

S1.2  
1/8"=1'

**Pennoni**  
 5755 RIC VILIC DRIVE  
 CLERMONT, FL 34711  
 (772) 536-8772  
 CHRISTOPHER COOK, P.E.  
 CHRISTOPHER P.L.L.C.  
 PROJECT NO. 19039

**FleischmanGarcia**  
 ARCHITECTS  
 25015 PARK AVENUE, SUITE 100  
 SAFETY HARBOR, FLORIDA 34626  
 (813) 727-2800  
 FAX (813) 727-2806  
 REGISTRATION NUMBER: AA 000223

**Pasco County  
 Fire & Rescue Station  
 No. 17**  
 New Port Richey, Florida

THIS DESIGN AND DRAWING IS THE SOLE PROPERTY OF FLEISCHMANGARCIA ARCHITECTS. NO PART OF THIS WORK MAY BE REPRODUCED WITHOUT THE WRITTEN PERMISSION OF FLEISCHMANGARCIA ARCHITECTS.

VERIFY TO THE BEST OF YOUR ABILITY THAT ALL DIMENSIONS AND ELEVATIONS SHOWN ON THIS DRAWING CORRELATE WITH ALL RELEVANT BUILDING CODES.

FGA PROJECT NUMBER  
19039

ISSUE DATE  
05-25-20

SHEET NUMBER  
**S1.2**

05-25-20 DWG: F:\Projects\19039\FRAMING\FRAMING.dwg - Pasco Fire Station 19039.dwg