

SAFEAIR/PLYMOVENT EXHAUST SOURCE CAPTURE SYSTEM TO BE FURNISHED AND INSTALLED BY CONTRACTOR. SYSTEM TO CONSIST OF THE FOLLOWING COMPONENTS AND NECESSARY RELATED COMPONENTS REQUIRED TO ACHIEVE A COMPLETE SYSTEM.

EIGHT SAFEAIR/PLYMOVENT SBTA-21-HT EXHAUST TRACK SYSTEMS WITH 4"HOSE DROPS AND MAGNETIC NOZZLES - WITH EIGHT TRUCK TAILPIPE CONVERTERS - INSTALLED

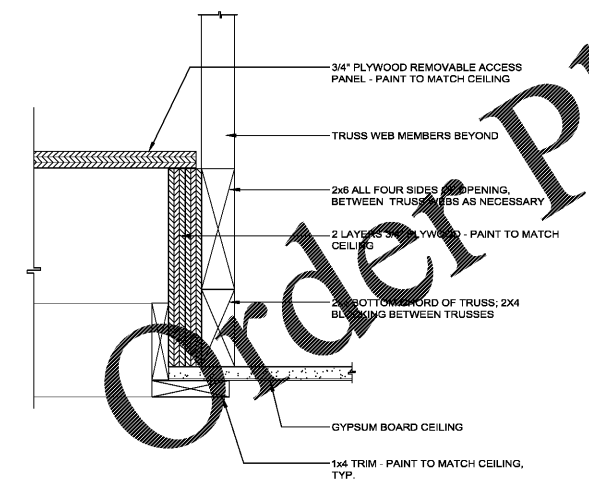
ONE SAFEAIR/PLYMOVENT SOURCE CAPTURE BLOWER MODEL TEV-745-80-3PH
 - BLOWER AUTOMATIC START/STOP MOTOR STARTER PACKAGE - W/DOLD-208-230 VAC - 24 VAC CONTROL
 - BLOWER MOTOR 7.5 HP TEFC - 208-230 VAC - 3 PHASE
 - EPOXY POWDER COATED BLOWER HOUSING WITH MOUNTING HARDWARE
 - CLASS B - AMCA SPARK PROOF RATING

ONE SAFEAIR/PLYMOVENT WD-4E-UL ELECTRICAL CONTROL BOX WITH E-MAIL REPORTING
 - NEMA 12 ENCLOSURE WITH SAFETY DISCONNECT SWITCH
 - AUTO START RECEIVER AND TRANSMITTERS FOR EIGHT VEHICLES
 - INTERFACE RELAYS FOR VENTILATION EXHAUST FANS - TYPE EFRS OR ALLEN BRADLEY OLD 24 VOLT
 - CARBON MONOXIDE SENSOR - REAL TIME WITH E-MAIL REPORTING
 - NITROGEN DIOXIDE SENSOR - REAL TIME WITH E-MAIL REPORTING
 - MOTOR STARTER CONTROLLER FOR EF-3 DIESEL EXHAUST FANS
 - TEMPERATURE THERMOSTAT FOR EF-3 DIESEL EXHAUST FANS
 - DIRTY FILTER ALARM - RED LED LIFETIME - REAL TIME WITH E-MAIL REPORTING
 - 95 DBA ALARM HORN FOR AUDIBLE GAS ALARM
 - STROBE LIGHT TOWER FOR VISUAL GAS ALARM - YELLOW/RED
 - E-MAIL TEXT DIALER FOR 6 LIFESTYLE AND SAFETY ALARMS
 - SMOKE DETECTOR ALARM - STROBE AND ALARM WITH REAL TIME EMAIL REPORTING
 - FIREFIGHTER PUSH TO CALL FOR SERVICE WITH E-MAIL REPORTING

SAFEAIR/PLYMOVENT CLAMPING DUCTWORK SYSTEM FOR SOURCE CAPTURE SYSTEM
 - 16 GA. GALVANIZED DUCTWORK WITH CLAMPS - NO LEAK WELDED SEAMS
 - 16 GA. GALVANIZED DUCTWORK 30 DEGREE BRANCHES-REDUCERS-ELBOWS
 - DUCTWORK HANGERS - DAMPERS - WALL FLASHINGS - HARDWARE
 - BACK-DRAFT STACK HEAD FOR OUTDOOR LOCATION - VERTICAL WALL PENETRATION

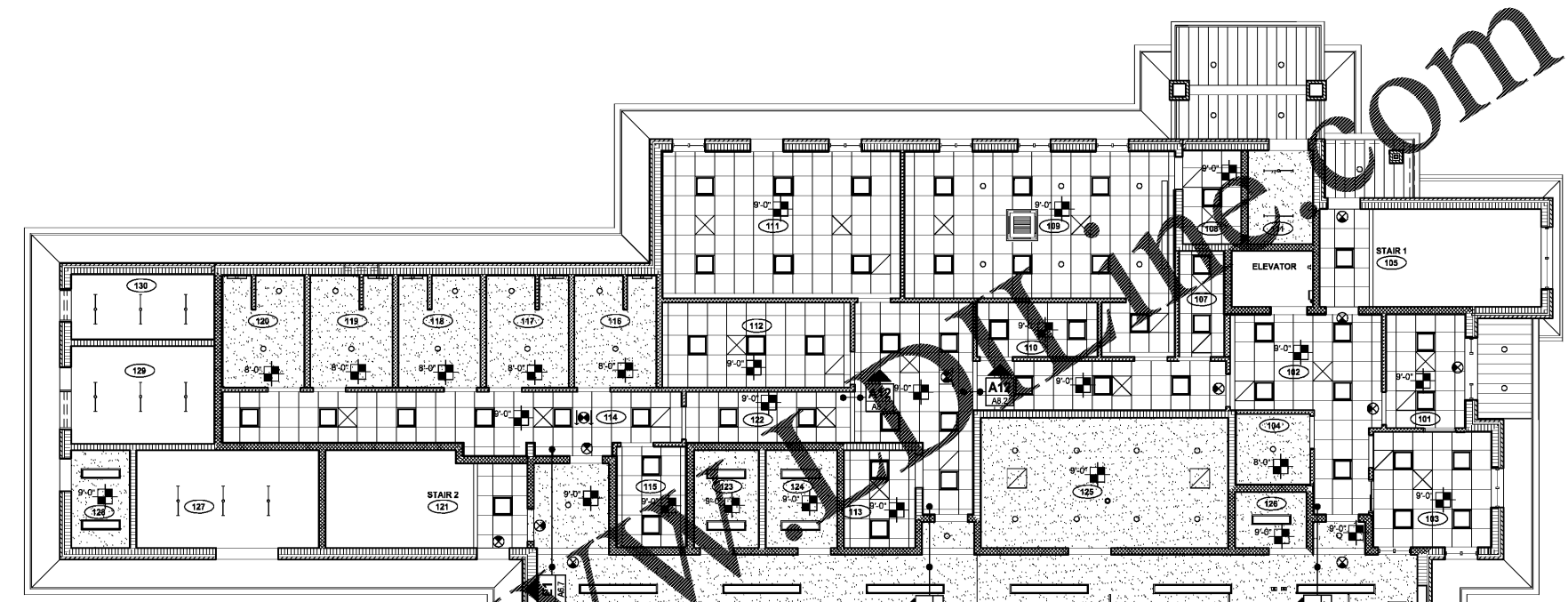
EXHAUST SOURCE CAPTURE SYSTEM EQUIPMENT AND INSTALLATION TO BE PROVIDED BY SAFEAIR CORPORATION
 FLORIDA, P.O. BOX 3077 SARASOTA, FLORIDA 34230-3077, 1-800-798-8820

DIESEL EXHAUST SOURCE CAPTURE SYSTEM NOTES



- REFLECTED CEILING PLAN LEGEND**
- ACOUSTICAL PANEL CEILING 1
 - ACOUSTICAL PANEL CEILING 2
 - GYPSUM BOARD CEILING
 - CEILING TO MATCH FINISH FLOOR
 - EXPOSED LED LIGHT FIXTURE
 - 2' X 4' LED LIGHT FIXTURE
 - 1' X 8' LED LIGHT FIXTURE
 - 2' X 2' LED LIGHT FIXTURE
 - RECESSED LIGHT FIXTURE
 - SPEAKERS - SEE E4.3 AND E4.4 FOR LOCATIONS AND TYPES
 - WALL-MOUNTED LED VANITY LIGHT
 - WALL-MOUNTED SPOTLIGHT
 - 52" DIAMETER CEILING FAN - MODEL #53240, WHITE, FIVE BLADES BY HUNTER
 - 24" DIAMETER CEILING FAN - MODEL #31F24WH24, WHITE, THREE BLADES BY MONTE CARLO
 - 60" DIAMETER CEILING FAN - MODEL #MK-161-05-18-06-A727-124-00-V54, BRUSHED ALUMINUM, SIX BLADES BY BIG ASS FANS W/ SINGLE WALL MOUNTED CONTROLLER
 - MECHANICAL GRILL
 - EXIT LIGHT

NOTES:
 ALL SPRINKLER HEADS, RECESSED LIGHTS, AND OTHER CEILING FIXTURES AND EQUIPMENT SHALL BE CENTERED IN ACOUSTIC CEILING TILES OR GYPSUM BOARD AREAS (AS SHOWN), WHERE APPLICABLE.
 SEE ELECTRICAL SHEETS FOR LIGHT FIXTURE SCHEDULE



DIESEL EXHAUST CAPTURE SYSTEM - SEE H11/A8.1

FOUR-FOLD APPARATUS BAY DOOR OPERATING MECHANISM

ATTIC ACCESS HATCH - SEE DETAIL A12/A8.1

CEILING MOUNTED ELECTRICAL RECEPTACLE. COORDINATE EXACT LOCATION WITH OWNER. TYPICAL

FleischmanGarcia
 ARCHITECTS • INTERIOR DESIGNERS
 3400 SOUTH WILLOW AVENUE, SUITE 100
 TAMPA, FLORIDA 33629
 PHONE (813) 241-4400
 FAX (813) 241-4400
 REGISTRATION NUMBER: A.A. 000173

Pasco County Fire & Rescue Station No. 17
 New Port Richey, Florida

NO DESIGN OR DRAWING IS THE SOLE PROPERTY OF FLEISCHMANGARCIA ARCHITECTS. NO PART OF THIS WORK MAY BE REPRODUCED OR TRANSMITTED IN ANY FORM OR BY ANY MEANS, ELECTRONIC OR MECHANICAL, WITHOUT PERMISSION FROM FLEISCHMANGARCIA.

VERIFY TO THE BEST OF MY KNOWLEDGE THAT THESE DRAWINGS COMPLY WITH ALL APPLICABLE REGULATORY AND BUILDING CODES.

FGA PROJECT NUMBER
19039

ISSUE DATE
05-25-20

REVISIONS
 DATE: _____
 DATE: _____
 DATE: _____

SHEET NUMBER
A8.1