

PASCO COUNTY UTILITY NOTES:

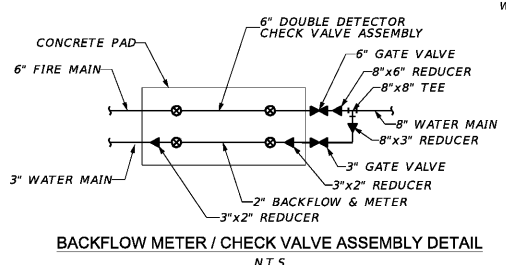
1. FIRE FLOW DEMAND: 1,000 GPM @ 20 PSI, MINIMUM.
2. ALL FIRE HYDRANTS SHALL BE FLOW-TESTED AND COLOR-CODED BASED ON FLOW RESULTS.
3. ALL UTILITY SYSTEM-DESIGN MATERIALS AND WORKMANSHIP SHALL COMPLY WITH STANDARDS FOR DESIGN AND CONSTRUCTION OF WATER, WASTEWATER, AND RECLAIMED WATER FACILITIES SPECIFICATIONS, LATEST EDITION.
4. CONNECTIONS INTO AN EXISTING COUNTY-OWNED SYSTEM SHALL BE VIA WET TAP. WET TAPS SHALL BE PERFORMED EXCLUSIVELY BY THE UTILITIES SERVICES BRANCH AT THE DEVELOPER'S EXPENSE. EXCAVATION, BACKFILL, AND SURFACE RESTORATION SHALL BE THE CONTRACTOR'S RESPONSIBILITY. MATERIAL FOR WET TAPS LARGER THAN TWO INCHES SHALL BE PROVIDED AND INSTALLED BY THE PROJECT CONTRACTOR.
5. CONTRACTOR'S RESPONSIBILITIES REGARDING WET TAPS TWO INCHES AND LARGER SHALL BE AS FOLLOWS:
 - 2" ONLY - THIS EXCAVATED TRENCH MUST BE DRY OR THE TRENCH WILL REQUIRE ROCK AND A PUMP TO BE IN PLACE. THE MINIMUM DISTANCE FROM THE FACE OF THE VALVE TO THE WALL OF THE TRENCH IS TO BE SIX FEET.
 - 3" AND LARGER - THE CONTRACTOR WILL SUPPLY A TAPPING SADDLE BEING EPOXY COATED, A TAPPING VALVE WITH MECHANICAL JOINT AND THE EQUIPMENT TO PROVIDE, AND CONDUCT A PRESSURE TEST. COUNTY PERSONNEL WILL WITNESS THE PRESSURE TEST WHICH MUST BE AT 150 PSI FOR DURATION OF THIRTY MINUTES.
 - THE CONTRACTOR IS RESPONSIBLE FOR THE EXCAVATION BEFORE ANY COUNTY PERSONNEL WILL ENTER AN EXCAVATED AREA. IF THE TRENCH IS FOUR FEET IN DEPTH OR DEEPER, IT WILL REQUIRE A TRENCH BOX OR SLOPING, AND A LADDER ACCORDING TO OCCUPATIONAL SAFETY AND HEALTH ADMINISTRATION (OSHA) STANDARDS.
 - THE TAPPING VALVE WILL REQUIRE A BLOCKING DEVICE MADE OF SUITABLE MATERIAL OR DEVICE. THIS BLOCKING DEVICE OR MATERIAL WILL BE PLACED UNDER THE VALVE AND REMAIN IN PLACE UNTIL THE TAP MACHINE IS REMOVED AND THE TAP IS COMPLETED.
 - NOTE: IF THE CONTRACTOR HAS NOT FULFILLED HIS RESPONSIBILITIES, AS STATED ABOVE, PRIOR TO THE ARRIVAL OF PASCO COUNTY UTILITIES OPERATIONS AND MAINTENANCE TAPPING CREW, THERE WILL BE AN ADDITIONAL CHARGE OF \$95.00.
6. THE UTILITIES SERVICES BRANCH SHALL NOT OWN OR MAINTAIN ON-SITE WATERLINES, SEWER LINES, OR FACILITIES, UNLESS OTHERWISE APPROVED BY THE UTILITIES SERVICES BRANCH.

FLORIDA GOVERNMENTAL UTILITY AUTHORITY NOTES

1. All construction shall meet Pasco County Standards and Specifications as applicable.
2. An FGUA representative is to be present during connections to existing facilities with 72 hour notification.
3. All utilities within the property lines will be owned and maintained by the property owner.
4. Any utilities (pipes, valves, and associated hardware) to be conveyed to FGUA will be located within an existing public utility easement, right-of-way (ROW) and/or a dedicated FGUA utility easement.
5. Any real property (lift stations, pump houses, wells, etc.) will not be located within the ROW and will be conveyed to FGUA via a specific warranty deed.
6. Low pressure air test, and video inspection are required for the gravity collection system - Water systems are tested to a minimum of 150psi for two-hour duration as per AWWA C 600 standards. Fire systems are not the FGUA responsibility.
7. Install 10 gauge tracer wire on all main pipelines. Wire to extend into each valve box with sufficient excess to bring wire three feet above finish grade.
8. All water and/or wastewater lines passing under paved areas will be constructed with a casing and shall apply with local or state DOT standards.
9. A Reduced Pressure Zone (RPZ), Backflow Prevention Assembly (BFP) is required. Acceptable models: Febo 825Y, Watts 909, Wilkins 975XL, or Conbraco 400.
10. Full circle stainless steel tapping saddle sleeve with resilient seated tapping valve for proposed water and force main connections to be used.
11. Water tapping saddles to be double strap brass or ductile iron or epoxy coated steel with stainless steel hardware. Tie straps and bolts shall be corrosion resistant alloy steel.
12. All fire flow lines will run separate from the domestic water mains and have a fire detection meter and a Fire Line Backflow Prevention Assembly (BFP) assembly shall include a low flow BY-PASS meter w/ RPZ.
13. Manhole frames & covers, and CO caps are to be water tight, if needed existing manhole tops are to be adjusted to proposed grade.
14. Inflow protection dishes are required for all manholes; stainless steel in paved areas, ABS in unpaved areas.
15. A cleanout shall be provided at the ROW/WPL for all service connections.
16. The FGUA shall own and maintain all water service lines up to the Point of Connection. All water mains shall be a minimum of four inches (4") in diameter and all such water mains shall be constructed in dedicated Rights-of-Way or appropriate utility Easements dedicated to the FGUA.
17. All sewer force main lines and gravity service lines accepted must be at least four inches (4") in diameter and eight inches (8"), respectively, except Lateral Sewer service lines which shall be no less than six inches (6") in diameter and accepted by the FGUA to a cleanout located on the edge of the Right-of-Way or an Easement.
18. A ball check valve followed by a plug valve will be installed on force mains located PUE or RW at the property line discharging from privately owned lift stations connect into the utility mains.
19. Connection to existing manholes and/or lift stations shall be by bore body with Kor-N-Seal connectors.
20. All connections will be made as hot taps. Any exceptions to this shall require FGUA approval. All hot tap connections shall be performed by a licensed underground contractor, with advance notification (72 Hours) to the FGUA Inspector.
21. Backflow prevention devices shall be privately owned and maintained. BFDs should be located outside of any FGUA easement or right-of-way. The sole responsibility of the property owner to maintain the device and provide annual testing certifications to the FGUA.

PASCO COUNTY FIRE NOTES:

1. ALL PROJECTS MUST COMPLY WITH PASCO COUNTY FIRE HYDRANT ORDINANCE NO. 46-51.
2. FIRE HYDRANTS SHALL BE INSTALLED AND IN SERVICE PRIOR TO THE ACCUMULATION OF COMBUSTIBLES.
3. PER THE NATIONAL FIRE PROTECTION ASSOCIATION, NFPA-1, 16.4.3.1.3: WHERE UNDERGROUND WATER MAINS AND HYDRANTS ARE TO BE PROVIDED, THEY SHALL BE INSTALLED, COMPLETED, AND IN SERVICE PRIOR TO CONSTRUCTION.
4. PER NFPA-1, 16.3.4.1: CLEARANCES OF 7 1/2 FEET IN FRONT OF AND TO THE SIDES OF THE FIRE HYDRANT WITH A FOUR-FOOT CLEARANCE TO THE REAR MUST BE MAINTAINED AT ALL TIMES.
5. GATED ENTRIES REQUIRE A SIREN OPERATING SYSTEM OR A 3M OPTICOM SYSTEM FOR EMERGENCY ACCESS.
6. A SEPARATE PLAN AND PERMIT, ISSUED TO A CONTRACTOR LICENSED BY THE FLORIDA STATE FIRE MARSHAL'S OFFICE, IS REQUIRED FOR THE INSTALLATION OF UNDERGROUND FIRE LINES.



LEGEND

- - - - - EXISTING FORCE MAIN
- - - - - EXISTING RECLAIM MAIN
- - - - - EXISTING WATER MAIN
- — — — — PROPOSED 8" PVC FIRE MAIN
- — — — — PROPOSED PVC WATER MAIN
- — — — — PROPOSED PVC FORCE MAIN
- — — — — PROPOSED SANITARY SEWER MAIN