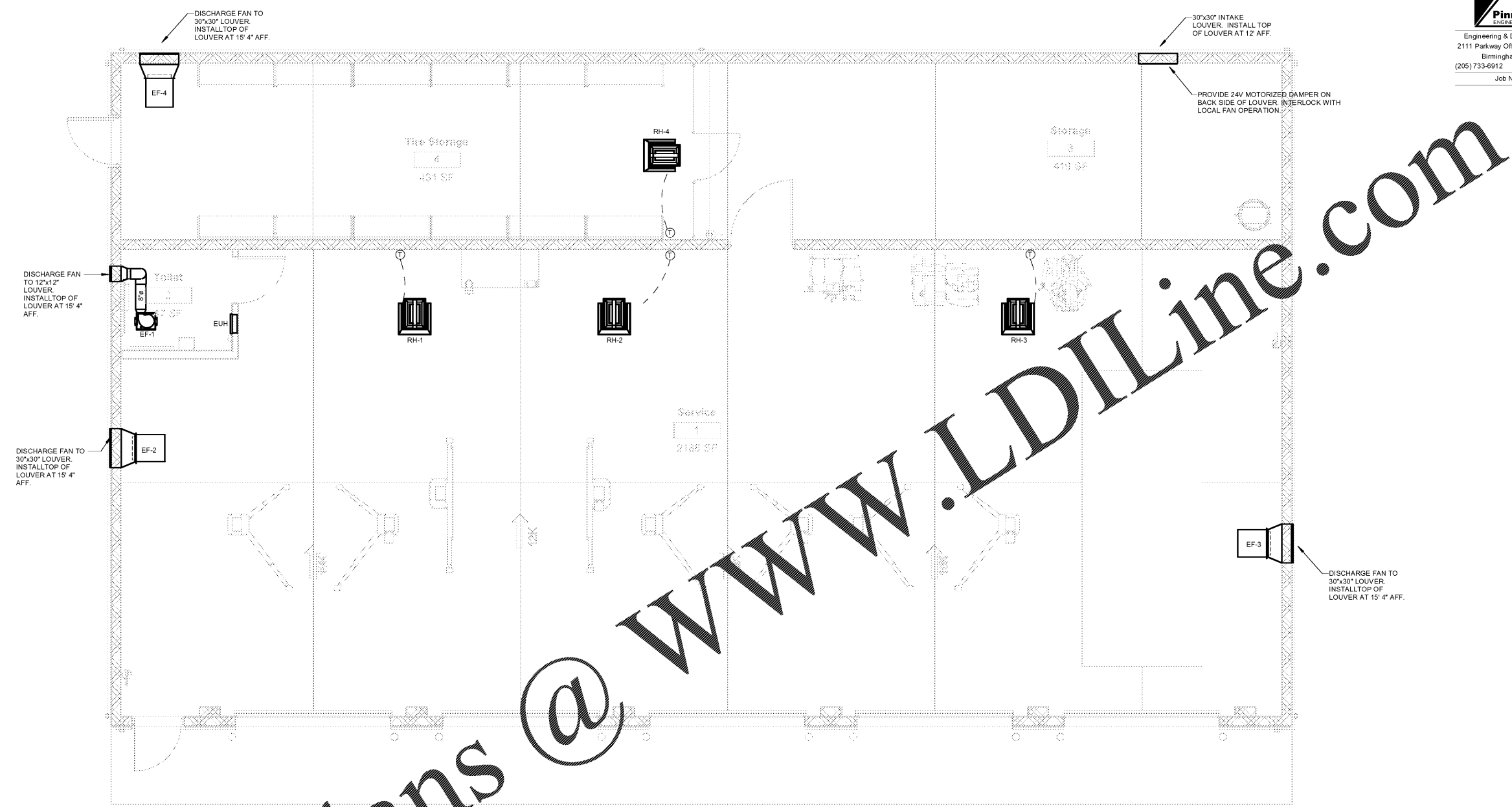
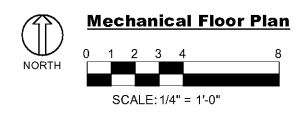




Engineering & Design Consultants
 2111 Parkway Office Circle, Suite 125
 Birmingham, AL 35244
 (205) 733-6912 FAX: (205) 733-6913
 Job No. 20163



Order Plans @ www.LDILine.com



- GENERAL NOTES:**
- 1 VERIFY EXISTING CONDITIONS IN FIELD PRIOR TO BEGINNING WORK.
 - 2 SPACE ABOVE CEILING IS LIMITED. CAREFUL COORDINATION WITH LIGHTING, ELECTRICAL, PLUMBING, STRUCTURAL, AND ARCHITECTURAL WORK IS CRITICAL TO DUCTWORK INSTALLATION.
 - 3 PROVIDE NECESSARY OFFSETS IN PIPING, ELECTRICAL CONDUIT, AND DUCTWORK AS REQUIRED TO ACCOMMODATE NEW WORK. DRAWINGS ARE DIAGRAMMATIC AND DO NOT SHOW ALL DETAILS NOR CHANGES IN DUCTWORK ELEVATIONS NECESSARY FOR COMPLETE INSTALLATION.
 - 4 COORDINATE CEILING AIR DEVICE LOCATIONS WITH LIGHTING PLAN AND ARCHITECT'S REFLECTED CEILING PLAN.
 - 5 DUCTWORK SHALL BE RUN TIGHT TO STRUCTURE. AVOID CROSSING OVER LIGHTS AND OTHER DUCTS DUE TO TIGHT CLEARANCES.
 - 6 LOUVERS SHALL BE RUSKIN ELF6375D OR APPROVED EQUAL. PROVIDE UNIT WITH BIRDSCREEN AND MILL ALUMINUM FINISH. COORDINATE EXACT HEIGHT AND COLOR OF LOUVER WITH ARCHITECT PRIOR TO ORDERING.
 - 7 MOUNT TEMPERATURE CONTROLS 48" ABOVE FINISHED FLOOR. COORDINATE EXACT LOCATION WITH ARCHITECT.
 - 8 OUTSIDE AIR VENTILATION INTAKES FOR OIL CHANGE AND SERVICE AREAS WILL BE PROVIDED BY OPEN ROLL-UP DOORS. DOORS SHALL BE OPEN WHILE VENTILATION SYSTEM IS ENABLED.
 - 9 MAINTAIN ALL MANUFACTURERS DISTANCES FOR INSTALLATION OF RADIANT HEATERS.

Express Oil Change & Tire Engineers
 Service Building (Hurricane)
 2265 O'Neal Lane
 Baton Rouge, LA 70816

FINAL

No.	Description	Date

© 2020 Aho Architects, LLC. All Rights Reserved.

Mechanical Floorplan	
Project number	20025
Date	08/27/2020
Drawn by	CRA
Checked by	JAB
SV-M1.01	
Scale	As indicated