



Engineering & Design Consultants  
2111 Parkway Office Circle, Suite 125  
Birmingham, AL 35244  
(205) 733-6912 FAX: (205) 733-6913  
Job No. 20163



**LEGEND**

- 12x20 DUCT SIZE, FIRST FIGURE IS SIDE SHOWN INSIDE CLEAR DIMENSION UNLESS NOTED OTHERWISE
- 24x12 LOW PRESSURE, RECTANGULAR (GALVANIZED STEEL)
- 20" x LOW PRESSURE, RECTANGULAR (ALUMINUM STEEL)
- 20x10 MEDIUM PRESSURE, FLAT OVAL (GALVANIZED STEEL)
- FLEXIBLE DUCT
- DUCT RISE
- DUCT DROP
- EXISTING DUCTWORK TO REMAIN
- DUCT TRANSITION
- RECTANGULAR TO ROUND DUCT TRANSITION
- TURNING VANES
- FIRE DAMPER AND SLEEVE, PROVIDE ACCESS DOOR
- SMOKE DAMPER AND SLEEVE, PROVIDE ACCESS DOOR
- COMBINATION FIRE/SMOKE DAMPER, PROVIDE ACCESS DOOR
- MANUAL VOLUME DAMPER
- STANDARD 45° BRANCH, SUPPLY OR RETURN, NO SPLITTER
- STANDARD 45° BRANCH, SUPPLY OR RETURN, NO SPLITTER, WITH MANUAL VOLUME DAMPER
- CONICAL SPIN-IN FITTING WITH BUTTERFLY DAMPER
- GRILLE OR REGISTER, CEILING
- ACCESS DOOR
- CONDENSATE DRAIN PIPING
- AUXILIARY CONDENSATE DRAIN PIPING
- REFRIGERANT PIPING (2 LINES TOTAL)
- ELBOW, 90° (LONG RADIUS)
- TEE
- TEE, TURNED UP
- TEE, TURNED DOWN
- ELBOW, TURNED DOWN
- ELBOW, TURNED UP
- WALL MOUNTED THERMOSTAT
- WALL MOUNTED HUMIDISTAT
- WALL MOUNTED TEMPERATURE SENSOR
- WALL MOUNTED CARBON DIOXIDE SENSOR
- WALL MOUNTED DEVICE W/ COVER GAIRD
- SMOKE DETECTOR
- TIE NEW INTO EXISTING
- UNDERCUT DOOR 3/4 INCHES
- SUPPLY AIR FLOW
- RETURN OR EXHAUST AIR FLOW

**ABBREVIATIONS**

- AB, CL'G ABOVE CEILING
- ABV. ABOVE
- AC ALTERNATING CURRENT
- A/C AIR COMPRESSOR
- AFB ABOVE FINISHED FLOOR
- AHU AIR HANDLING UNIT
- AI ANALOG INPUT
- ALT. ALTERNATE
- AMP AMPERE
- AO ANALOG OUTPUT
- APPROX. APPROXIMATELY
- ARCH. ARCHITECTURAL
- AVG AVERAGE
- B BOILER
- BTU BRITISH THERMAL UNIT
- CFM CUBIC FEET PER MINUTE
- CH CHILLER
- CHWP CHILLED WATER PUMP
- CLG CEILING
- CT COOLING TOWER
- CU CONDENSING UNIT
- CWP CONDENSER WATER PUMP
- DEFL DEFLECTION
- DET DETAIL
- DI DIGITAL INPUT
- DIA DIAMETER
- Ø DIAMETER
- DO DIGITAL OUTPUT
- EDB ENTERING DRY BULB
- ELEC. ELECTRICAL
- ELEV. ELEVATION
- EWB ENTERING WET BULB
- EWT ENTERING WATER TEMPERATURE
- EXH EXHAUST
- EXIST. EXISTING
- 'F DEGREES FAHRENHEIT
- GFF GAS FIRED FURNACE
- GPM GALLONS PER MINUTE
- FPM FEET PER MINUTE
- FPS FEET PER SECOND
- FT FOOT OR FEET
- HD HEAD
- HP HORSE POWER
- HR HOURS
- HT HEIGHT
- HTR HEATER
- HVAC HEATING, VENTILATION AND AIR CONDITIONING
- HWP HOT WATER PUMP
- HX HEAT EXCHANGER
- HZ FREQUENCY (HERTZ)
- ID INSIDE DIAMETER
- IN. INCHES
- KW KILOWATT
- KWH KILOWATT HOUR
- MAX MAXIMUM
- MBH 1000 BTU PER HOUR
- MECH. MECHANICAL
- MFR. MANUFACTURER
- MIN MINIMUM
- NO. NUMBER
- N/A NOT APPLICABLE
- NC NOISE CRITERIA
- OA OUTSIDE AIR
- Ø OVAL DUCTWORK
- ORIG. ORIGINAL
- PH. PHASE
- PIU POWERED INDUCTION UNIT
- PRESS. PRESSURE
- RTM RETURN AIR
- RTU ROOFTOP AIR HANDLING UNIT
- SDC STAND ALONE DIGITAL CONTROLLER
- SENS. SENSIBLE
- SQ. SQUARE
- SPLY SUPPLY
- TEMP. TEMPERATURE
- VAV VARIABLE AIR VOLUME
- W WATT
- W/ WITH
- W.P.D. WATER PRESSURE DROP

**POWER VENTILATOR SCHEDULE**

EQUIPMENT NO.	MANUFACTURER	MODEL	FAN TYPE	CFM	STATIC PRESSURE	FAN RPM	SONES	DISCONNECT	MOTOR STARTER	MOTOR HP	VOLTS/PH./HZ.	LOCATION	TYPE	DRIVE	COMMENTS
EF-1	Loren Cook Company	GC-148	CABINET	70 CFM	0.35 in-wg	955	2.0	BY ELEC	BY MECH	40 W	115/1/60	CEILING	CENTRIFUGAL	DIRECT	1, 3, 5
EF-2	Loren Cook Company	16XP26	SIDEWALL	1750 CFM	0.25 in-wg	1262	12.7	BY ELEC	BY MECH	1/3	115/1/60	WALL	PROPELLER	DIRECT	2, 3, 4, 5
EF-3	Loren Cook Company	16XP26	SIDEWALL	1750 CFM	0.25 in-wg	1262	12.7	BY ELEC	BY MECH	1/3	115/1/60	WALL	PROPELLER	DIRECT	2, 3, 4, 5
EF-4	Loren Cook Company	14XP26	SIDEWALL	1300 CFM	0.25 in-wg	1429	11.1	BY ELEC	BY MECH	1/4	115/1/60	WALL	PROPELLER	DIRECT	2, 3, 4, 5

- REMARKS:  
1) PROVIDE OCCUPANCY SENSOR FOR FAN OPERATION.  
2) FAN SHALL RUN CONTINUOUSLY DURING OCCUPIED HOURS.  
3) PROVIDE WITH FAN SPEED CONTROLLER.  
4) PROVIDE WITH FAN INLET GUARDS.  
5) PROVIDE WITH BACKDRAFT DAMPER.

**RADIANT HEATING SCHEDULE**

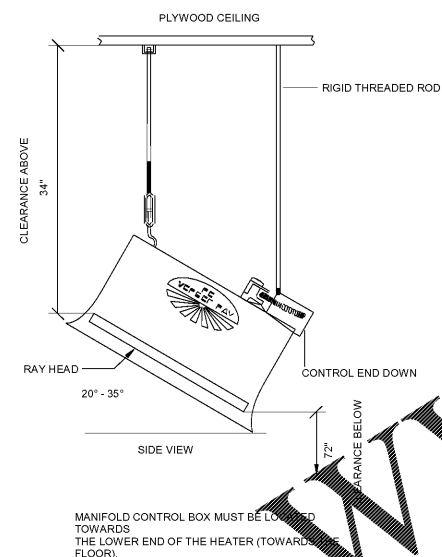
EQUIPMENT NO.	MANUFACTURER	MODEL	HEATING CAPACITY (BTU)	WATTS	DISCONNECT	VOLTS/PH./HZ.	WEIGHT	MOUNTING HEIGHT	REMARKS
RH-1	RE-VERBER-RAY	DR-50	50000.0 Btu/h	17 W	BY ELEC	115/1/60	50	11'-7"	1, 2, 3, 4
RH-2	RE-VERBER-RAY	DR-50	50000.0 Btu/h	17 W	BY ELEC	115/1/60	50	11'-7"	1, 2, 3, 4
RH-3	RE-VERBER-RAY	DR-50	50000.0 Btu/h	17 W	BY ELEC	115/1/60	50	11'-7"	1, 2, 3, 4
RH-4	RE-VERBER-RAY	DR-50	50000.0 Btu/h	17 W	BY ELEC	115/1/60	50	11'-7"	1, 2, 3, 4

- REMARKS:  
1.) MAINTAIN DISTANCES FROM COMBUSTIBLES PER MANUFACTURERS INSTALL DETAILS.  
2.) PROVIDE WITH 24V TRANSFORMER AND LOW VOLTAGE THERMOSTAT.  
3.) ANGLE UNITS AT 30 DEGREES FROM HORIZONTAL. SUSPEND UNITS FROM STRUCTURE WITH 3/8" THREADED ROD.  
4.) HEIGHT SHOWN SHALL BE MEASURED FROM BOTTOM OF RAY HEAD SURFACE.

**ELECTRIC UNIT HEATER SCHEDULE**

MARK	MANUFACTURER	MODEL	WATTS	STAGES	CFM	DISCONNECT	VOLTS/PH./HZ.	MOUNTING	REMARKS
EUH	MARKEL	H3423T	3000 W		45 CFM	BY ELEC	240/1/60	WALL	1, 2

- NOTES:  
1. PROVIDE RECESSED IN WALL UNIT WITH UNIT MOUNTED THERMOSTAT.  
2. COORDINATE COLOR WITH ARCHITECT.

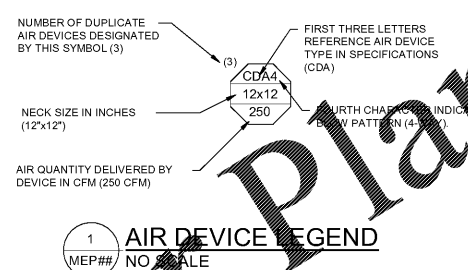


3 RADIANT HEATER MOUNTING DETAIL  
NO SCALE

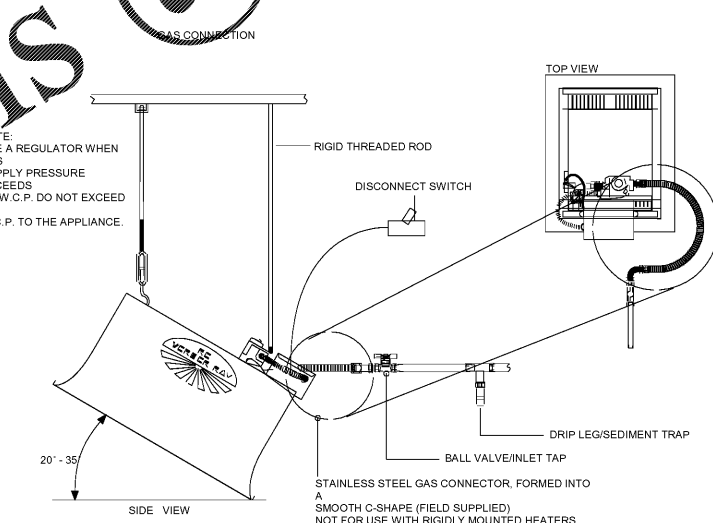
**DISTANCE TO COMBUSTIBLES**

MODEL NO.	SIDES	BACK	TOP	BELOW/FRONT
DR 50	1"	1"	1"	72"

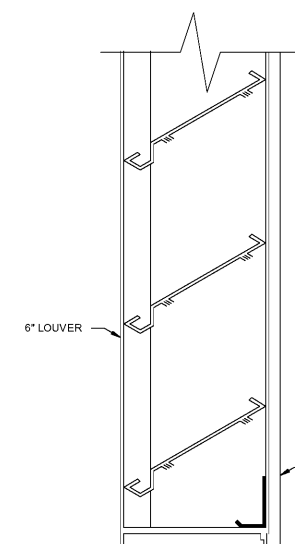
\*MAINTAIN PER MANUFACTURERS INSTALLATION REQUIREMENTS. DISTANCES MEASURED ABOVE BELOW RAY HEAD SURFACE.



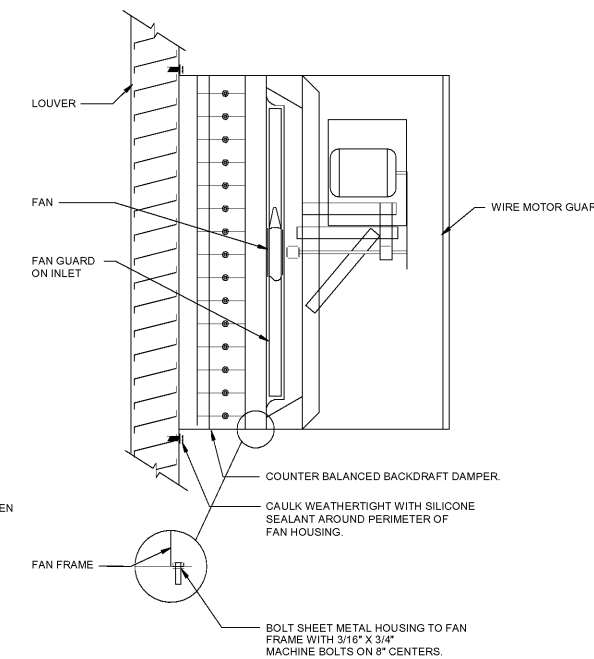
1 AIR DEVICE LEGEND  
NO SCALE



4 RADIANT HEATER GAS CONNECTION DETAIL  
NO SCALE



2 LOUVER DETAIL  
NO SCALE



1 WALL EXHAUST FAN DETAIL  
NO SCALE

Express Oil Change & Tire Engineers  
Service Building (Hurricane)  
2265 O'Neal Lane  
Baton Rouge, LA 70816

FINAL

No.	Description	Date

© 2020 Aho Architects, LLC. All Rights Reserved.

**Mechanical Legend, Schedules and Details**

Project number	20025
Date	08/27/2020
Drawn by	CRA
Checked by	JAB
<b>SV-M0.01</b>	
Scale	12" = 1'-0"

Order Plans @

WWW.LDLINE.COM