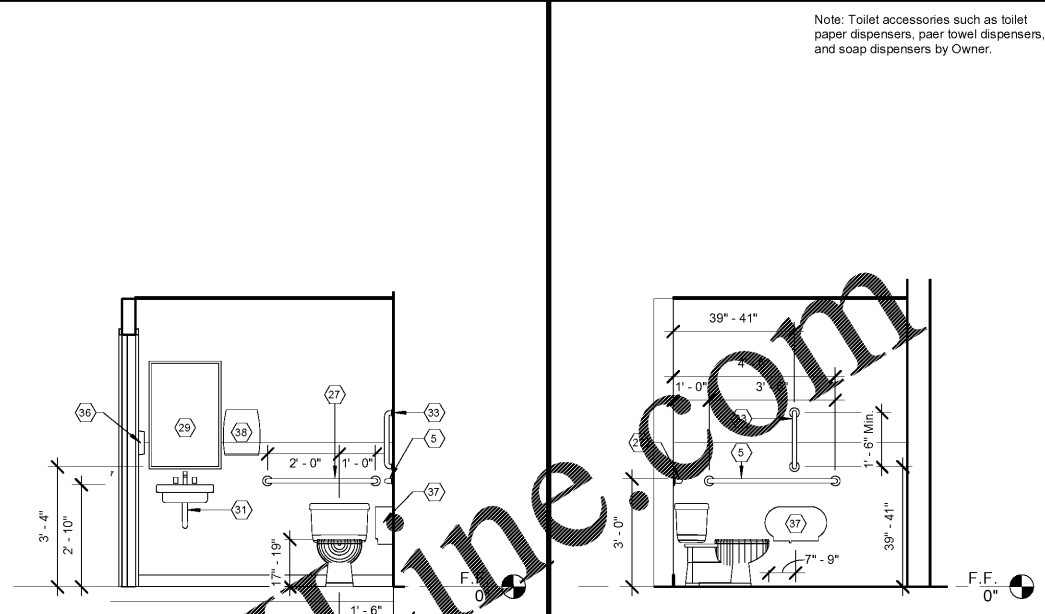
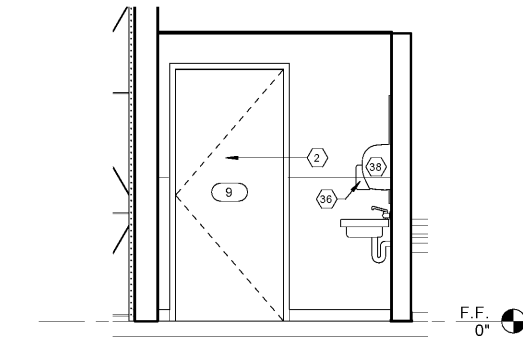


7 Interior Signage
3" = 1'-0"

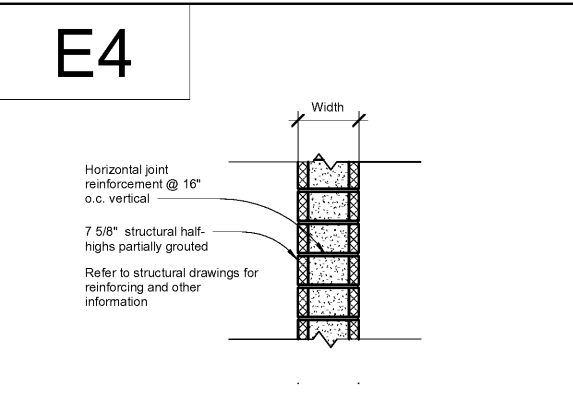
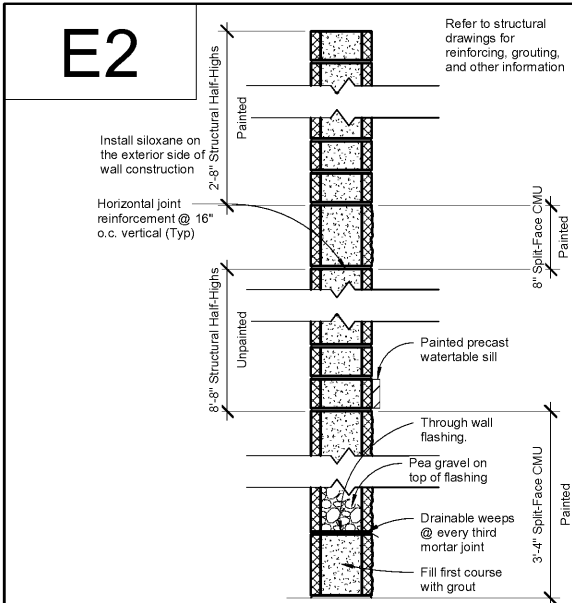


1 Front Elevation - Toilet 2
3/8" = 1'-0"

5 Left Elevation - Toilet 2
3/8" = 1'-0"

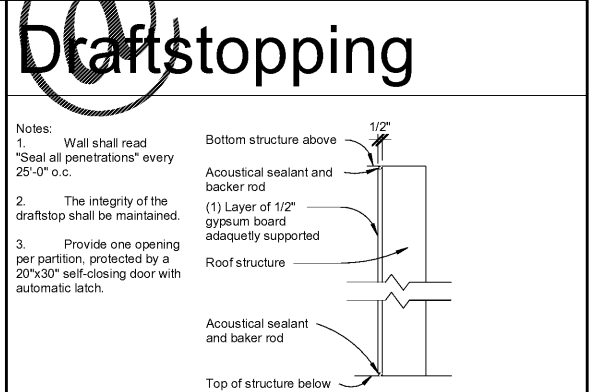
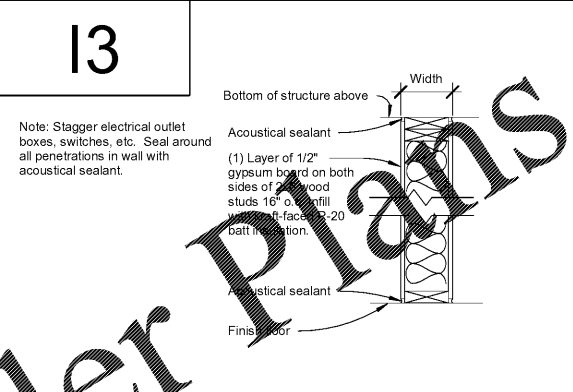
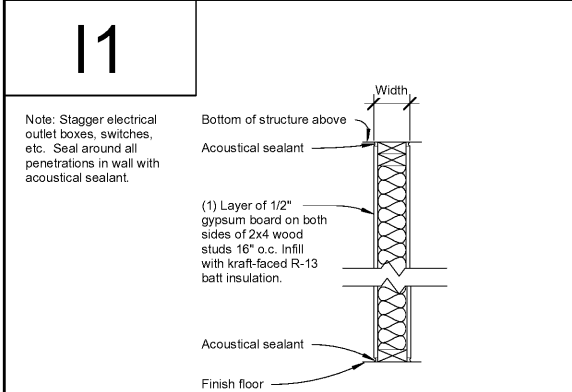


6 Right Elevation - Toilet 2
3/8" = 1'-0"



Wall Type No.	Description	Width	Ref Test
E4	As shown	7 5/8"	-

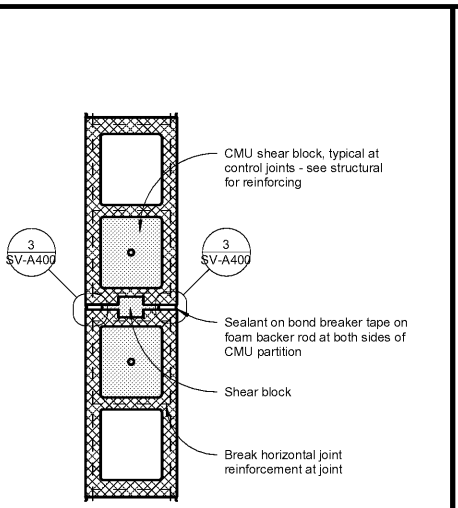
Wall Type No.	Description	Width	Ref Test
E2	As shown	7 5/8"	-



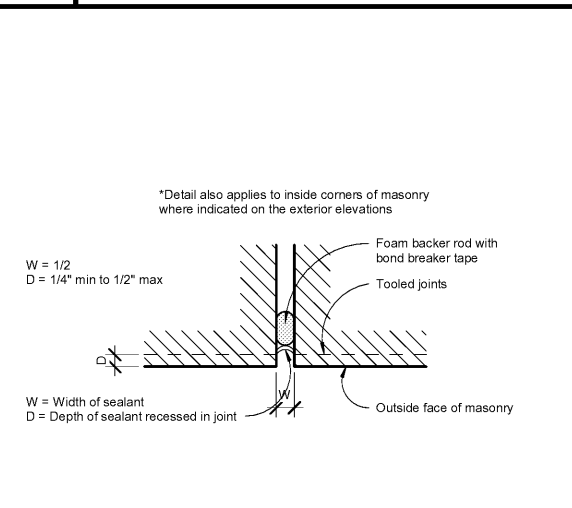
Wall Type No.	Description	Width	Ref Test
I1	As shown	4 1/2"	-

Wall Type No.	Description	Width	Ref Test
I3	As shown	6 1/2"	-

Wall Type No.	Description	Width	Ref Test
Draftstopping	As shown	1/2"	-



2 Masonry Control Joint
1 1/2" = 1'-0"



3 Sealant Detail
6" = 1'-0"



Express Oil Change & Tire Engineers
Service Building (Hurricane)
2265 O'Neal Lane
Baton Rouge, LA 70816

FINAL

No.	Description	Date

© 2020 Aho Architects, LLC. All Rights Reserved.

Wall Types & Interior Elevations

Project number	20025
Date	08/27/2020
Drawn by	ARC
Checked by	TAA

SV-A400
Scale As indicated

Order Plans

WWW.LDILINE.COM