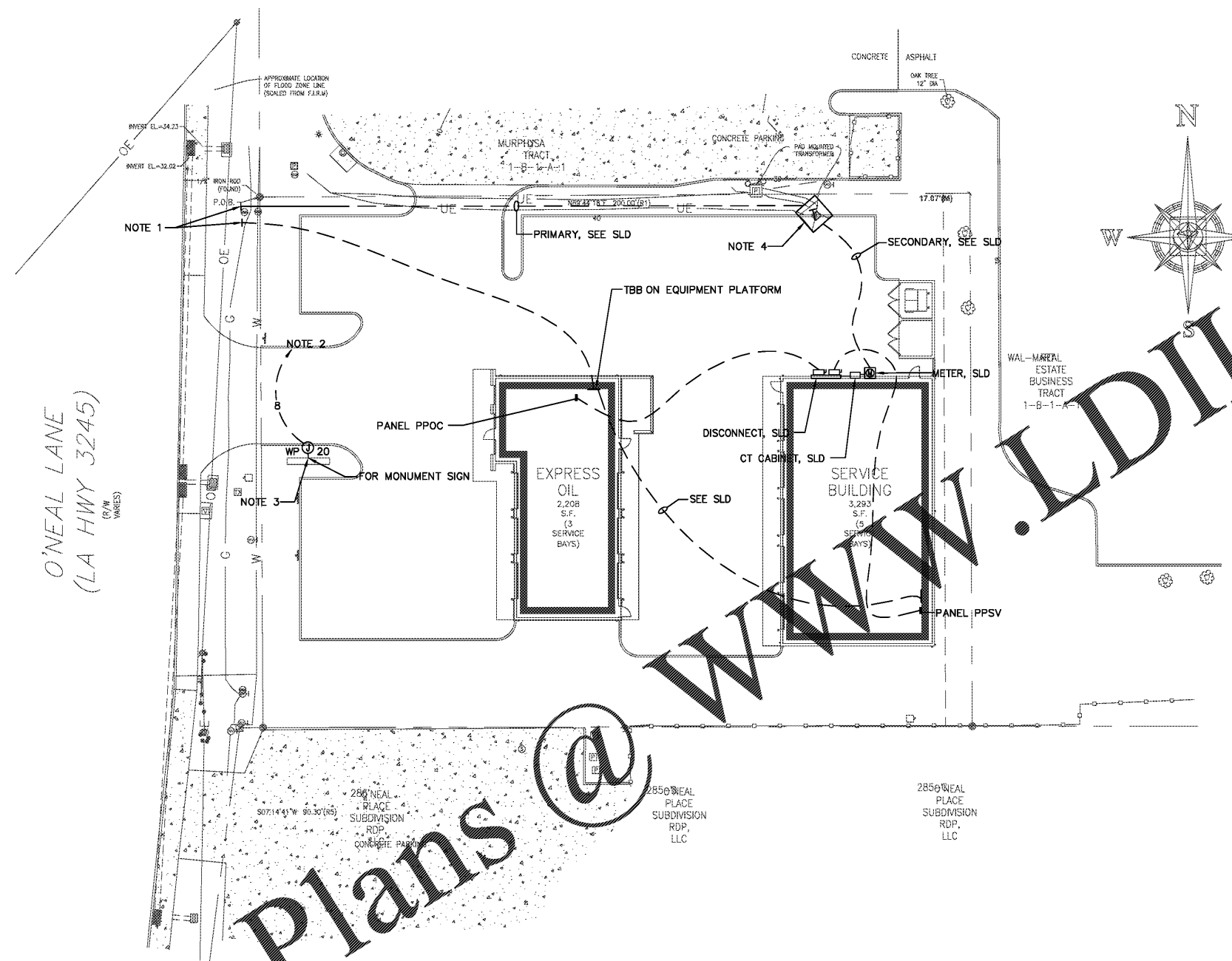


Express Oil Change & Tire Engineers
Right Hand Oil Change Building (Hurricane)
 2265 O'Neal Lane
 Baton Rouge, LA 70816



NOTES:

1. VERIFY EXACT LOCATION OF STUB UP BEFORE CONCRETE POUR.
2. HOMERUN TO PANELBOARD PPOC THROUGH LIGHTING CONTACTOR OC-2.
3. LOCATION OF MONUMENT SIGN SHOWN HERE IS FOR REFERENCE ONLY. VERIFY EXACT LOCATION OF MONUMENT SIGN WITH CIVIL BEFORE ROUGH.
4. UTILITY PAD MOUNTED TRANSFORMER. FURNISH AND INSTALL CONCRETE PAD PER OWNER COMPANY REQUIREMENTS. CONTACT UTILITY COMPANY FOR PAD SPECIFICATIONS AND REQUIRED TERMINATIONS AT TRANSFORMER BEFORE BID AND PRICING, INCLUDING COSTS IN BID.

① Site Plan - Electrical
 1" = 20'-0"

Order Plans @ WWW.LDILine.com

FINAL

No.	Description	Date

© 2020 Aho Architects, LLC. All Rights Reserved.

Site Plan - Electrical

Project number 20025
 Date 08/27/2020

Drawn by TH
 Checked by NB

OC-E104

Scale 1" = 20'-0"

