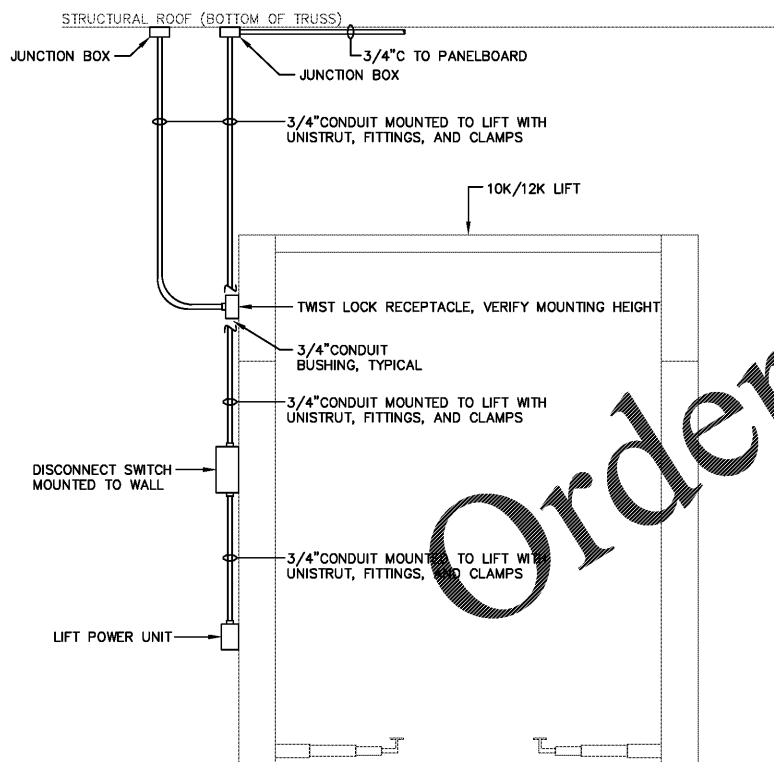


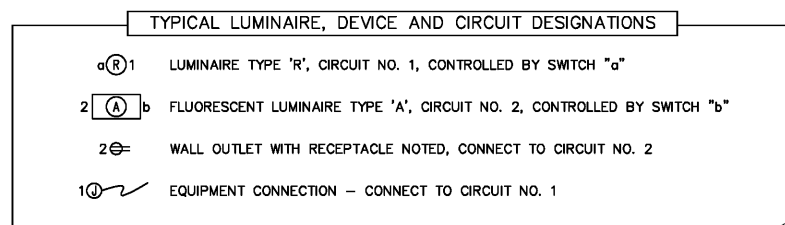
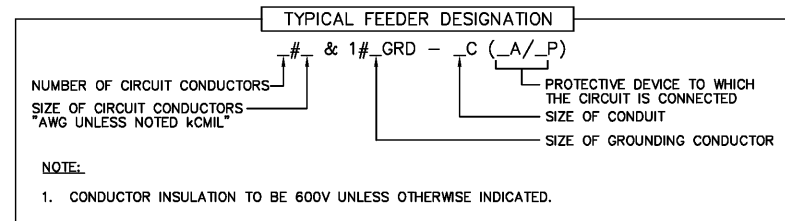
GROUNDING SYSTEM DETAIL
NOT TO SCALE

GROUNDING SYSTEM DETAIL – KEY NOTES

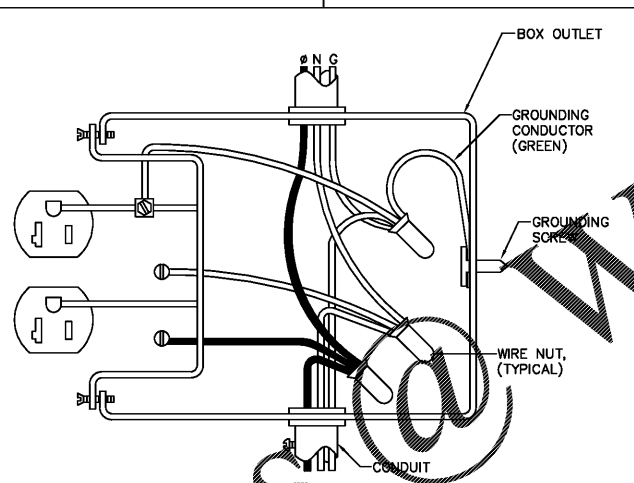
- ① BARE GROUNDING ELCTRODE CONDUCTOR, SEE SLD.
- ② 3/4"x10'-0" CLAD STEEL GROUND ROD, DRIVEN 24" BELOW GRADE, MINIMUM.
- ③ BARE GROUNDING ELECTRODE CONDUCTOR IN 2"PVC-40, SEE SLD.
- ④ EXOTHERMIC WELD CONNECTOR:
TWO CABLES TO GROUND ROD, CADWELD #GT OR #GY
CABLE TO CABLE TEE, CADWELD #TA
ONE CABLE TO GROUND ROD, CADWELD #GR
- ⑤ CAST BRONZE, UL LISTED GROUND CLAMP, O-Z/GEDNEY TYPE-G.
- ⑥ BONDING JUMPER, SIZED BY EQUIPMENT MANUFACTURER PER NEC 250-66.
- ⑦ BONDING JUMPER TO GROUNDING BUSHING. AND BONDING JUMPERS FROM CONDUIT TO CONDUIT. ALL CONDUIT CONNECTED TO THE SERVICE ENTRANCE ENCLOSURE SHALL BE BONDED, SIZED PER NEC 250.
- ⑧ MAIN BONDING JUMPER, SIZED BY MANUFACTURER PER 250-66.
- ⑨ BONDING JUMPER.
- ⑩ 6 CONDUCTOR GROUND BUS, COPPER OR ALUMINUM RATED, ILSCO #PDE.



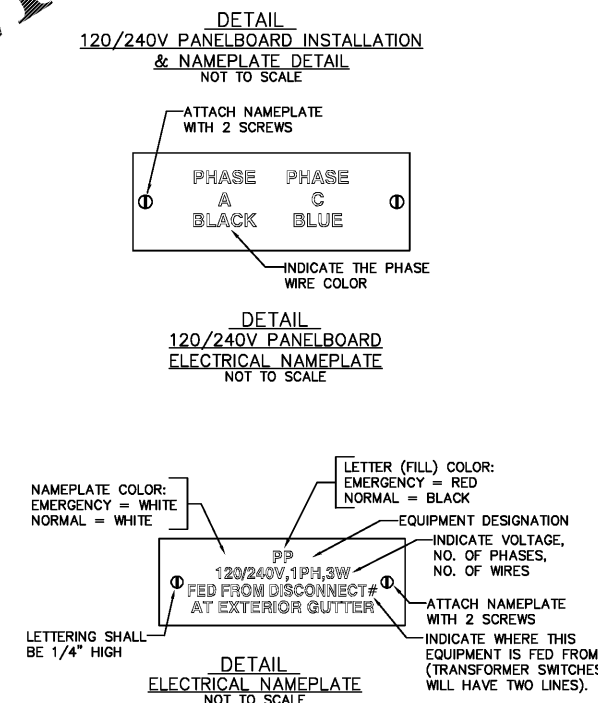
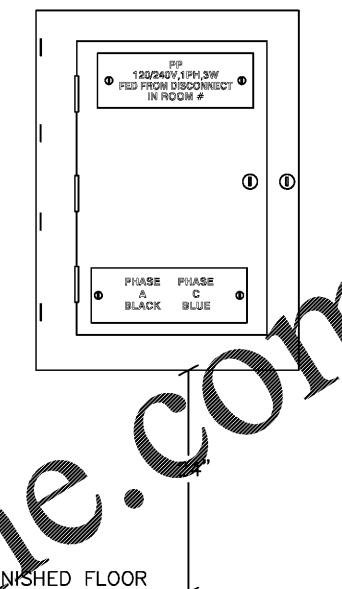
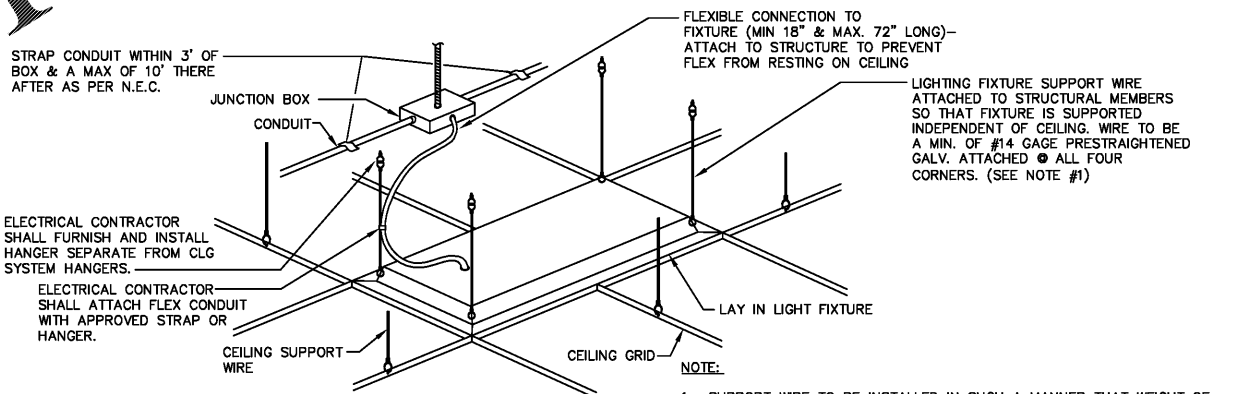
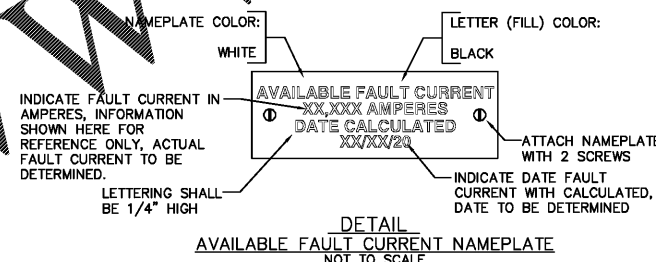
**ELEVATION
LIFT POWER DETAIL**
NOT TO SCALE



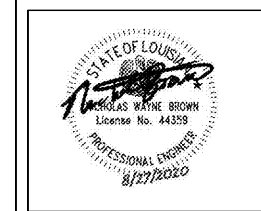
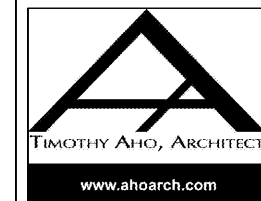
**DETAIL
WIRING DESIGNATION**
NOT TO SCALE



**DETAIL
RECEPTACLE INSTALLATION**
NOT TO SCALE



**DETAIL
ELECTRICAL NAMEPLATE**
NOT TO SCALE



Express Oil Change & Tire Engineers
Right Hand Oil Change Building (Hurricane)
2265 O'Neal Lane
Baton Rouge, LA 70816

FINAL

No.	Description	Date

© 2020 Aho Architects, LLC. All Rights Reserved.

Details

Project number	20025
Date	08/27/2020
Drawn by	TH
Checked by	NB
OC-E103	
Scale	NO SCALE

