



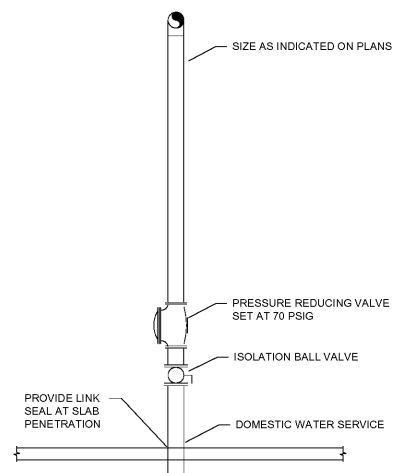
Engineering & Design Consultants
 2111 Parkway Office Circle, Suite 125
 Birmingham, AL 35244
 (205) 733-6912 FAX: (205) 733-6913
 Job No. 20163



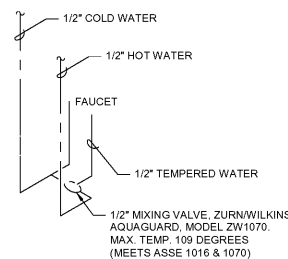
www.ahoarch.com



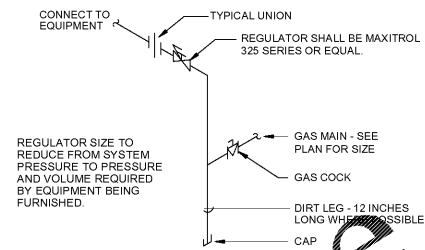
08/27/2020



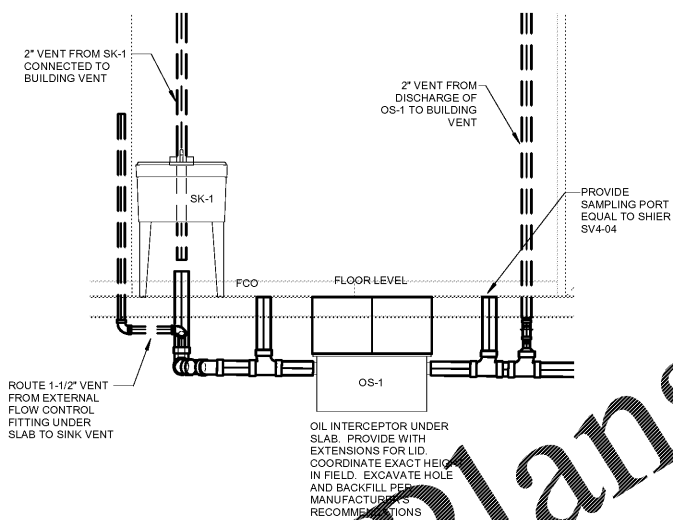
5 DOMESTIC WATER ENTRANCE DETAIL
 P2.03 NO SCALE



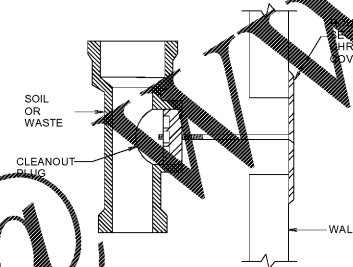
3 TYPICAL LAVATORY MIXING VALVE
 P2.03 SCALE: NONE



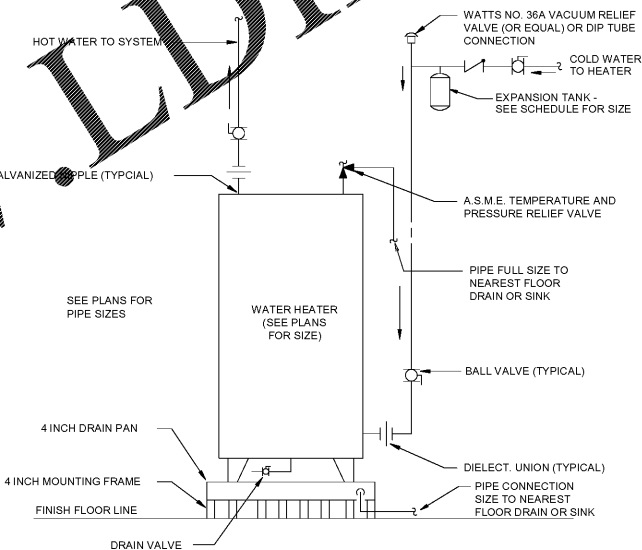
1 TYPICAL GAS CONNECTION
 P2.03 NO SCALE



6 OS-1
 OC-P2.03 1/2" = 1'-0"



4 WALL CLEANOUT
 P2.03 NO SCALE



2 ELECTRIC WATER HEATER (FLOOR MOUNTED)
 P2.03 NO SCALE

Order Plans

WWW.LDILine.com

Express Oil Change & Tire Engineers
 Right Hand Oil Change Building (Hurricane)
 2265 O'Neal Lane
 Baton Rouge, LA 70816

FINAL

No.	Description	Date

© 2020 Aho Architects, LLC. All Rights Reserved.

Plumbing Details	
Project number	20025
Date	08/27/2020
Drawn by	CA
Checked by	JB
OC-P2.03	
Scale	As indicated