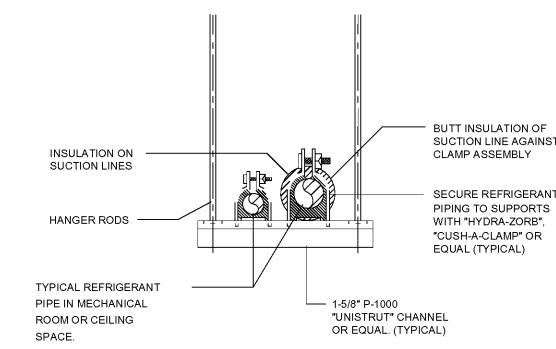




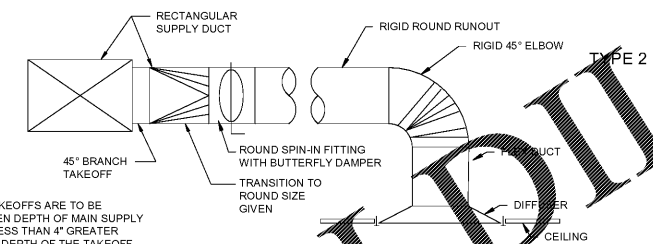
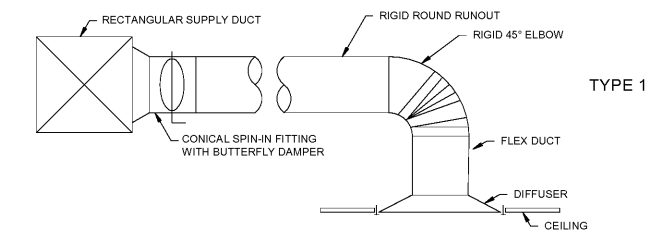
Engineering & Design Consultants
 2111 Parkway Office Circle, Suite 125
 Birmingham, AL 35244
 (205) 733-6912 FAX: (205) 733-6913
 Job No. 20163



08/27/2020

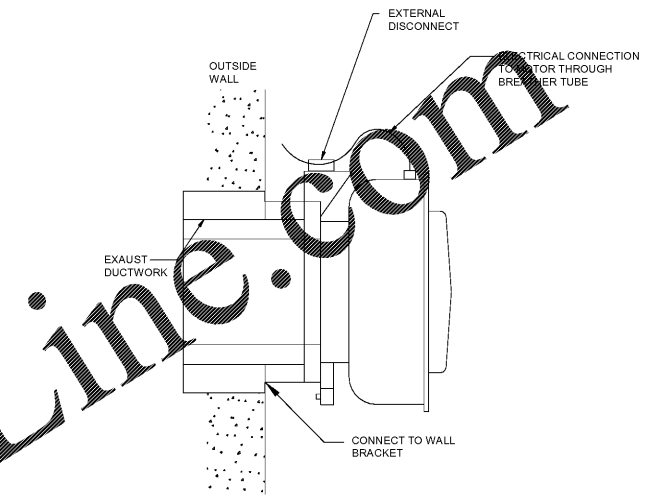


7 REFRIGERANT PIPING SUPPORT DETAIL
 TYPICAL FOR PIPING SUSPENDED FROM STRUCTURE
 NO SCALE

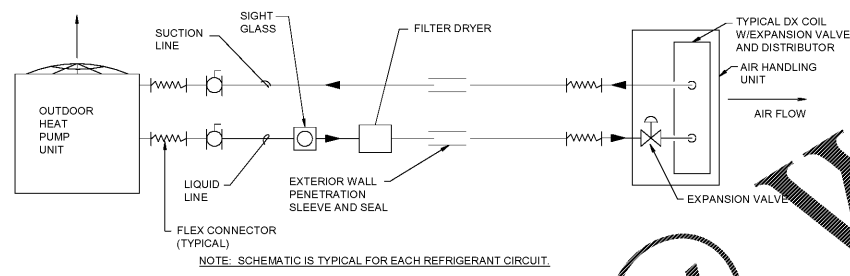


NOTE: TYPE 2 TAKEOFFS ARE TO BE USED WHEN DEPTH OF MAIN SUPPLY DUCT IS LESS THAN 4\"/>

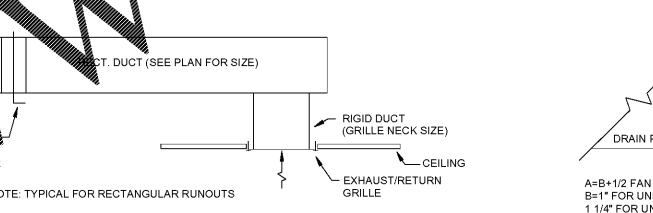
4 TYPICAL DIFFUSER RUN-OUT DETAIL
 NO SCALE



1 SIDEWALL EXHAUST FAN DETAIL
 NO SCALE

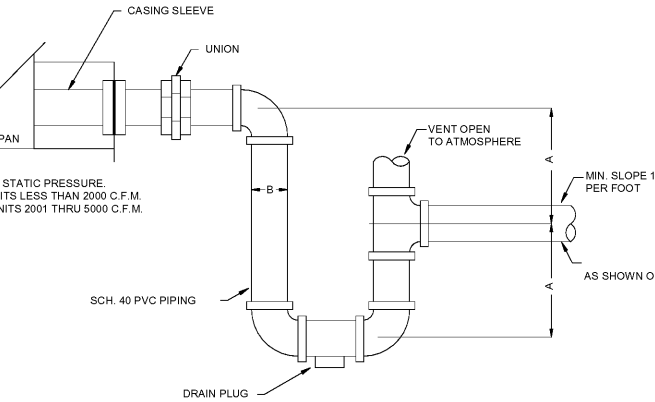


8 REFRIGERANT PIPING DETAIL
 NO SCALE

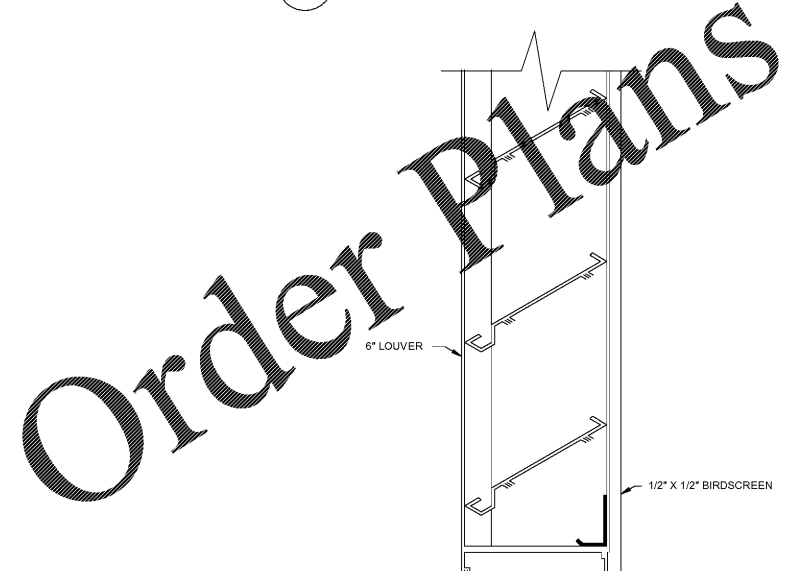


NOTE: TYPICAL FOR RECTANGULAR RUNOUTS

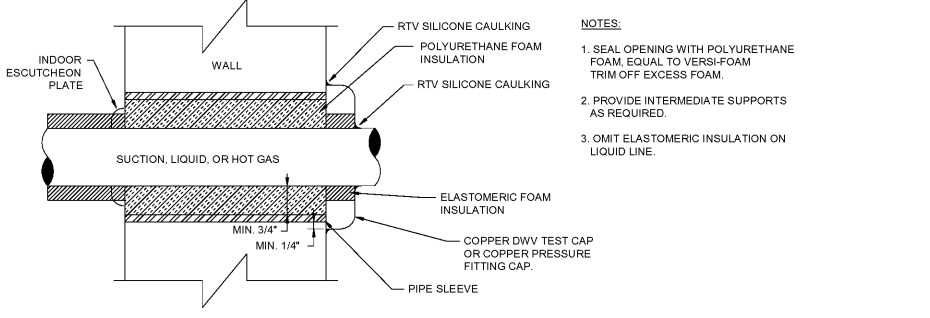
5 TYPICAL RETURN AND EXHAUST RUN-OUT DETAIL
 NO SCALE



2 CONDENSATE DRAIN TRAP DETAIL
 NO SCALE

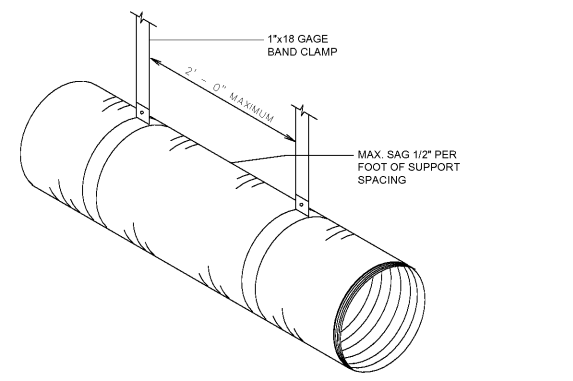


9 LOUVER DETAIL
 NO SCALE



NOTES:
 1. SEAL OPENING WITH POLYURETHANE FOAM, EQUAL TO VERSI-FOAM TRIM OFF EXCESS FOAM.
 2. PROVIDE INTERMEDIATE SUPPORTS AS REQUIRED.
 3. OMIT ELASTOMERIC INSULATION ON LIQUID LINE.

6 REFRIGERANT LINE - WALL PENETRATION DETAIL
 NO SCALE



3 FLEXIBLE DUCT SUPPORT DETAIL
 NO SCALE

Express Oil Change & Tire Engineers
 Right Hand Oil Change Building (Hurricane)
 2265 O'Neal Lane
 Baton Rouge, LA 70816

FINAL

No.	Description	Date

© 2020 Aho Architects, LLC. All Rights Reserved.

Mechanical Details

Project number	20025
Date	08/27/2020
Drawn by	CA
Checked by	JB
OC-M2.01	
Scale	12" = 1'-0"

Order Plans

WWW.IDILine.com