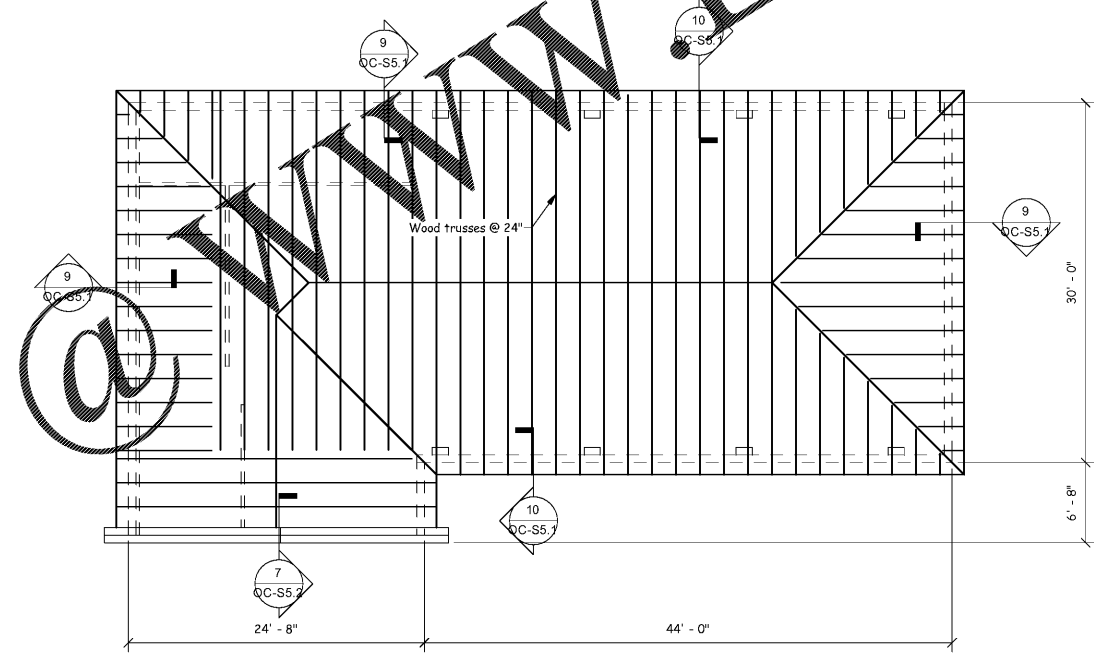


EQUIPMENT PLATFORM FRAMING PLAN
1/8" = 1'-0"



OIL CHANGE ROOF FRAMING PLAN
1/8" = 1'-0"

Sheet Notes:

1. See Sheet No S0.x for typical details and general notes.
2. Reference all elevations to finish floor elevation (+) 0'-0"
3. Roof construction 5/8" plywood deck with H-clips. Attach with 8d nails @ 6" o.c..
4. Roof slope = 8:12
5. Refer to architectural drawings for all dimensions, slopes, elevations, etc... not illustrated on this plan. Coordinate all final dimensions and elevations with architectural.
6. Truss loading: Top Chord Dead Load = 10 psf, Bottom Chord Dead Load = 10 psf, use Total dead load = 10psf for wind load calculations.
7. Truss requirements: (note that all of these requirements must be included in the truss submittal prior to receiving approval)
 - a) Furnish design calculations sealed by a Professional Engineer licensed in the state in which the project occurs for all truss members.
 - b) Truss manufacturer shall specify and provide all truss to truss and truss bearing connections, and not contain mention of "by others" in relation to design.
 - c) Truss manufacturer shall be responsible for providing and illustrating all temporary and permanent bracing required.

WWW.LDILine.com

Order Plans

Express Oil Change & Tire Engineers
Right Hand Oil Change Building (Hurricane)

2265 O'Neal Lane
Baton Rouge, LA 70816

FINAL

No.	Description	Date

© 2020 Aho Architects, LLC. All Rights Reserved.

Roof Framing Plan

Project number	20025
Date	08.27.2020
Drawn by	jcj
Checked by	jd
OC-S3.1	
Scale	As indicated

