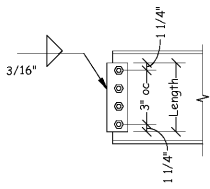


**Shear Plate Connection Schedule**

Length	# of bolts	End reaction	Min plate thickness
6"	2	8.2k	1/4"
9"	3	16.3k	1/4"
12"	4	26.1k	1/4"
15"	5	36.3k	1/4"
18"	6	46.3k	1/4"
21"	7	56.4k	1/4"



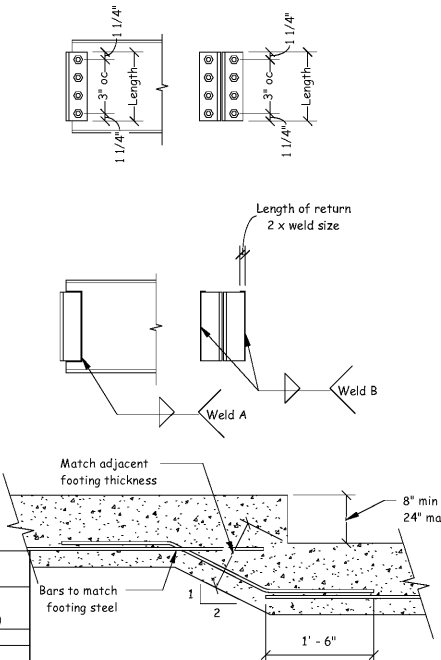
**Frame Connection Schedule**

Length	# of bolts	End reaction	Min angle thickness
5-1/2"	2	37.1k	5/16"
8-1/2"	3	55.3k	5/16"
11-1/2"	4	72.7k	5/16"
14-1/2"	5	88.7k	5/16"
17-1/2"	6	104.0k	5/16"

Length	Size of Weld A	End reaction	Min angle thickness
5-1/2"	3/16"	37.1k	5/16"
8-1/2"	3/16"	55.3k	5/16"
11-1/2"	3/16"	72.7k	5/16"
14-1/2"	3/16"	88.7k	5/16"
17-1/2"	3/16"	104.0k	5/16"

Length	Size of Weld B	End reaction	Min angle thickness
5-1/2"	1/4"	14.6k	5/16"
8-1/2"	1/4"	32.2k	5/16"
11-1/2"	1/4"	53.4k	5/16"
14-1/2"	1/4"	76.6k	5/16"
17-1/2"	1/4"	101.0k	5/16"

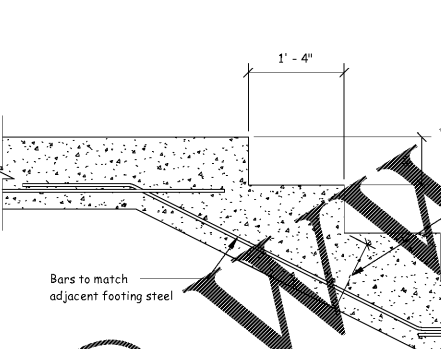
Depth of beam	Min length of angle	Depth of beam	Min Length of angle
W12	5-1/2"	W24	11-1/2"
W14	5-1/2"	W27	11-1/2"
W16	5-1/2"	W30	14-1/2"
W18	8-1/2"	W33	14-1/2"
W21	8-1/2"	W36	17-1/2"



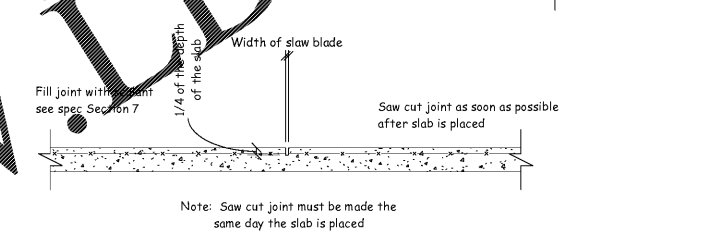
**Components and Cladding Schedule a = 3.4'**

Area(sf)	Zone 1,2,3 (+) (psf)	Zone 1 (-) (psf)	Zone 2,3 (-) (psf)	Zone 4,5 (+) (psf)	Zone 4 (-) (psf)	Zone 5 (-) (psf)
10	29.4	-32.1	-37.6	32.4	-34.9	-43.1
50	27.6	-28.4	-33.8	28.8	-31.5	-36.4
100	26.7	-26.7	-32.4	27.4	-30.1	-33.5

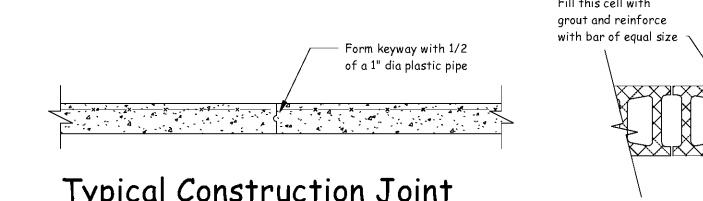
**Single Footing Step**



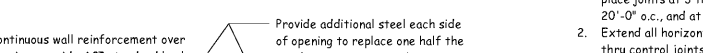
**Typical Anchor Bolt Detail Typical Base Plate**



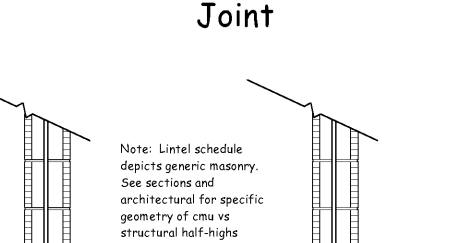
**Typical Control Joint**



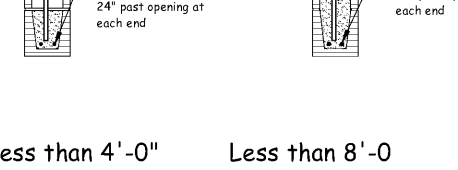
**Typical Construction Joint**



**Typical Masonry Wall Control Joint**



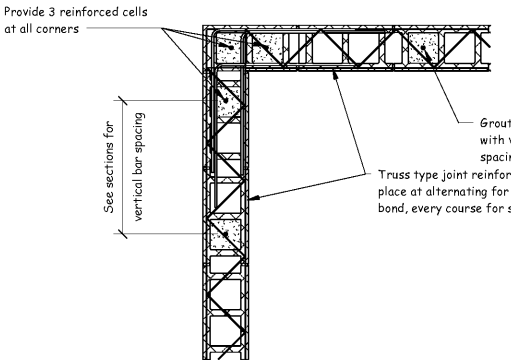
**CMU Lintel Schedule**



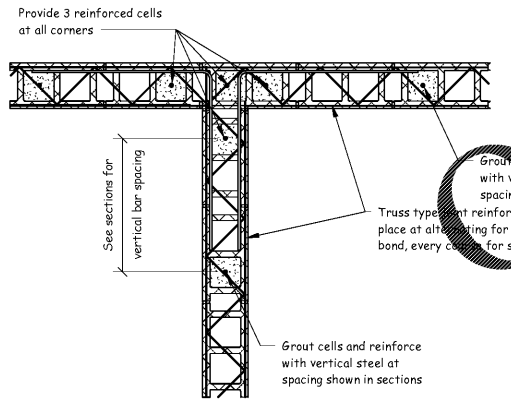
**Reinforcing Steel Lap Splice**

Bar Size	Column Splices		Bm, Ftg & Wall Splices		CMU Wall Splices
	Top Bars	Other Bars	Top Bars	Other Bars	
# 3	12"	19"	15"	18"	18"
# 4	15"	25"	19"	24"	24"
# 5	19"	31"	24"	30"	30"
# 6	23"	37"	29"	36"	36"
# 7	26"	54"	42"	42"	42"
# 8	30"	62"	48"	48"	48"
# 9	34"	70"	54"	54"	54"
# 10	38"	79"	61"	60"	60"
# 11	42"	87"	67"	66"	66"

- Notes:
- Top bars are any horizontal reinforcing steel that has another layer of steel more than 2" below the bars or reinforcing steel that has more than 12" of concrete below the bars.
  - All horizontal reinforcing bars in walls may be detailed as "Other Bars".
  - All corner bars may be detailed as "Other Bars".

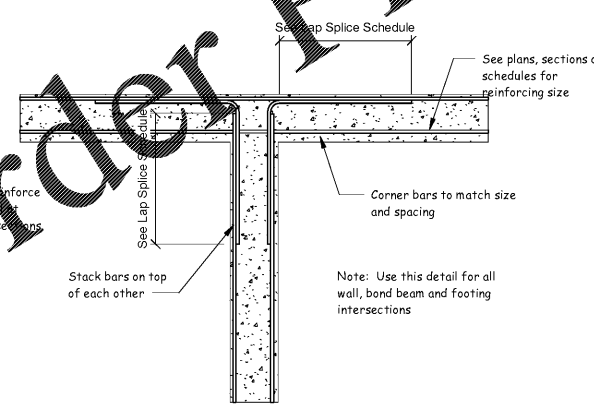


**Typical Joint Reinforcing at Corner**



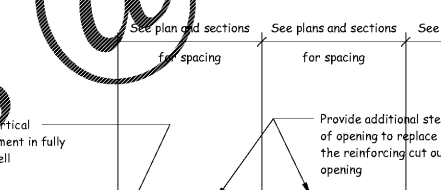
**Typical Joint Reinforcing at Intersection**

**Typical Beam, Wall or Footing Reinforcing at Corners**

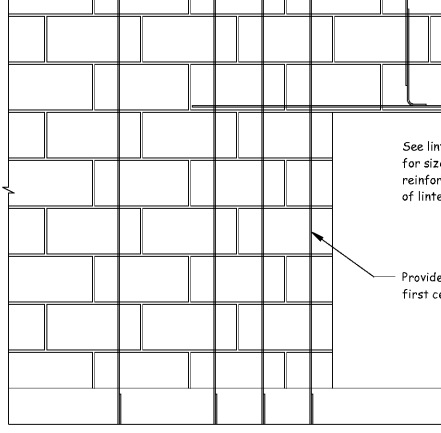


**Typical Beam, Wall or Footing Reinforcing at Intersections**

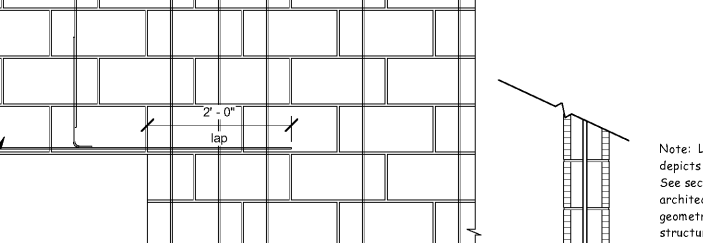
**Multiple Footing Step**



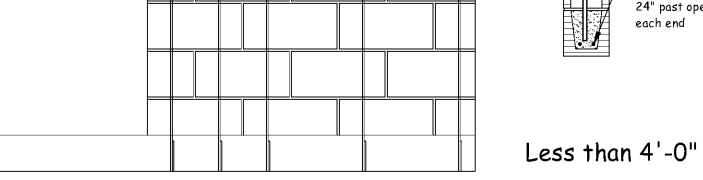
**CMU Lintel Elevation**



**Typical Masonry Wall Control Joint**



**CMU Lintel Schedule**



**CMU Lintel Schedule**

See sections on S5.1 for overhead door lintel

**Express Oil Change & Tire Engineers**  
Right Hand Oil Change Building (Hurricane)  
2265 O'Neal Lane  
Baton Rouge, LA 70816

FINAL

No.	Description	Date

© 2020 Aho Architects, LLC. All Rights Reserved.

**Typical Details**

Project number	20025
Date	08.27.2020
Drawn by	jcj
Checked by	jd
<b>OC-S0.2</b>	
Scale	3/4" = 1'-0"