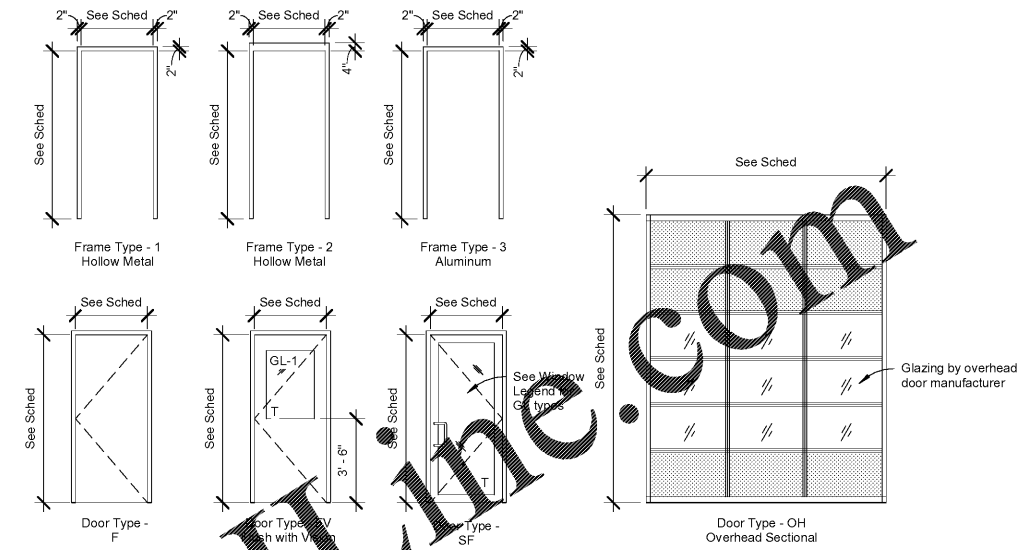


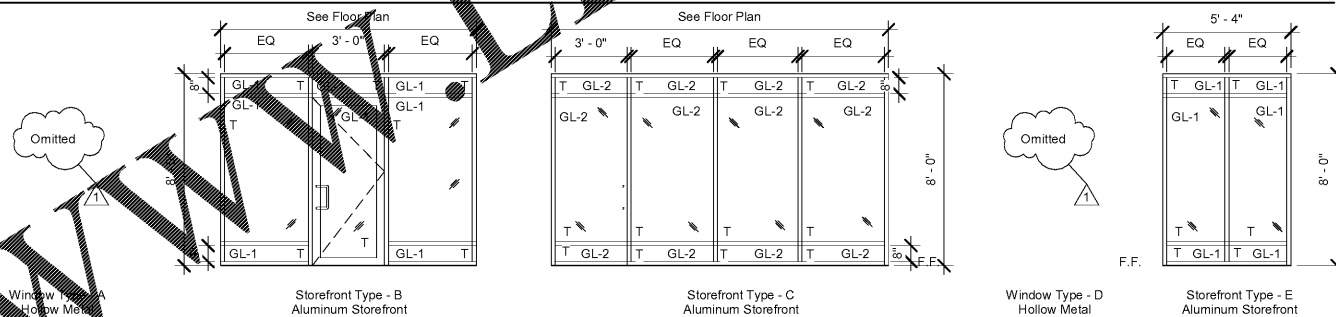
Number	Door					Door			Frame			Glass	Notes
	Width	Height	Thickness	Door Type	UL Label	Door Material	Door Finish	Frame Type	Frame Material	Frame Finish			
1	3'-0"	7'-0"	1 3/4"	SF	-	ALUM / GL	Clear Anodized	3	ALUM	Clear Anodized	Tempered	If required by the Fire Marshal or AHJ, add letter that reads "This door must remain unlocked when business is occupied."	
2	3'-0"	7'-0"	1 3/4"	F	45 Min.	WD	Painted	1	HM	Painted	N/A		
3	3'-0"	7'-0"	1 3/4"	FV		WD	Painted	1	HM	Painted	Tempered		
4	3'-0"	7'-0"	1 3/4"	F		WD	Painted	1	HM	Painted	N/A		
5	3'-0"	7'-0"	1 3/4"	F	45 Min.	WD	Painted	1	HM	Painted	N/A		
6	10'-0"	12'-0"	2 1/8"	OH		STEEL / GL	Factory Finish	N/A	Steel	Factory Finish	Tempered		
7	10'-0"	12'-0"	2 1/8"	OH		STEEL / GL	Factory Finish	N/A	Steel	Factory Finish	Tempered		
8	10'-0"	12'-0"	2 1/8"	OH		STEEL / GL	Factory Finish	N/A	Steel	Factory Finish	Tempered		
9	3'-0"	7'-0"	1 3/4"	F		HM	Painted	2	HM	Painted	N/A		
10	10'-0"	12'-0"	2 1/8"	OH		STEEL / GL	Factory Finish	N/A	Steel	Factory Finish	Tempered		
11	10'-0"	12'-0"	2 1/8"	OH		STEEL / GL	Factory Finish	N/A	Steel	Factory Finish	Tempered		
12	10'-0"	12'-0"	2 1/8"	OH		STEEL / GL	Factory Finish	N/A	Steel	Factory Finish	Tempered		
13	3'-0"	7'-0"	1 3/4"	F		HM	Painted	2	HM	Painted	N/A		
14	3'-0"	7'-0"	1 3/4"	F	45 Min.	WD	Painted	1	HM	Painted	N/A		
15	3'-0"	7'-0"	1 3/4"	F	45 Min.	WD	Painted	1	HM	Painted	N/A		
16	3'-0"	6'-4"	1 3/4"	F	45 Min.	WD	Painted	1	HM	Painted	N/A		

DOOR AND FRAME LEGEND



Material Schedule							
Abbreviation	Material Description	Manufacturer	Style Name or Number	Color (Description)	Size	Finish	Material Notes
AR	Automotive Rubber	N/A	N/A	N/A	N/A	N/A	Provided and installed by others.
CT	Ceramic Tile	Dal-Tile	Heathland	Ashland HL05	12x12	N/A	Use MAPEI 47 Epoxy Grout
P-1	Paint - Color 1	Sherwin Williams	See Paint Schedule on OC-G202	SW 6966 Blueblood	N/A	See Paint Schedule on OC-G202	
P-2	Paint - Color 2	Sherwin Williams	See Paint Schedule on OC-G202	Custom Color Dover Gray	N/A	See Paint Schedule on OC-G202	
P-3	Paint - Color 3	Sherwin Williams	See Paint Schedule on OC-G202	SW 7669 Summit Gray	N/A	See Paint Schedule on OC-G202	
P-4	Paint - Color 4	Sherwin Williams	See Paint Schedule on OC-G202	SW 6959 Blue Chip	N/A	See Paint Schedule on OC-G202	
P-5	Paint - Color 5	Sherwin Williams	See Paint Schedule on OC-G202	Safety Yellow	N/A	See Paint Schedule on OC-G202	
P-6	Paint - Color 6	Sherwin Williams	See Paint Schedule on OC-G202	Safety Red	N/A	See Paint Schedule on OC-G202	
P-7	Paint - Color 7	Sherwin Williams	See Paint Schedule on OC-G202	SW7006 Extra White	N/A	See Paint Schedule on OC-G202	
PL-1	Plastic Laminate	Wilsonart	4880-38	Carbon Mesh	N/A	N/A	
RB	Rubber Base	Ropee	Pinnacle	175 Slate	4"	N/A	
SC	Sealed Concrete	Sherwin Williams	See Paint Schedule on OC-G202	Haze Gray	N/A	See Paint Schedule on OC-G202	Add SharkGrip for added slip resistance

WINDOW LEGEND



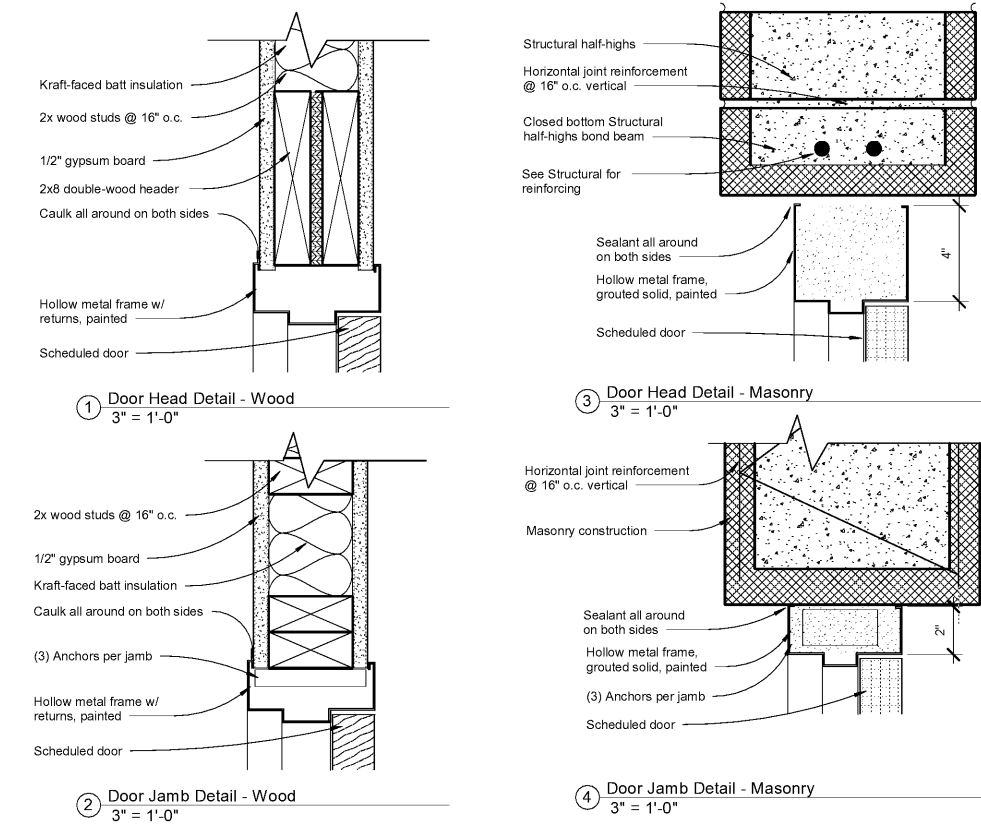
Dover Gray is a Custom Color:

Deep Base	OZ	32	64	128
W1 White	-	14	1	1
B1 Black	2	26	1	1
R2 Maroon	-	4	-	1
Y3 Deep Gold	-	17	1	1

Number	Name	Area	Floor Finish	Base Finish	Finish Schedule				Ceiling Finish	Remarks
					Rear	Right	Front	Left		
1	Service Writing	140 SF	CT	CT - 6"	Storefront	P-1 / P-2 / P-3	Storefront / P-1 / P-2 / P-3	P-1 / P-2 / P-3	Gyp. Bd. P-7	See OC-G301 for paint pattern
2	Waiting Room	267 SF	CT	CT - 6"	P-3 w/ Vinyl Graphics & P-1/P-2/P-3	P-1 / P-2 / P-3	Storefront / P-1 / P-2 / P-3	P-1 / P-2 / P-3	Gyp. Bd. P-7	See OC-G301 for paint pattern
3	Toilet	50 SF	CT	CT - 6"	P-3 / CT	P-3 / CT	P-3 / CT	P-3 / CT	Gyp. Bd. P-7	CT wainscot. 4'-0" high.
4	Oil Change	1271 SF	AR	None/RB	P-3	P-4	P-3	P-4 / P-1 w/ Vinyl Graphics	Plywood & Batten Strips P-7	RB on gypsum board walls only. See OC-G301 for paint pattern. If Owner chooses not to install Automotive Rubber in Oil Change, GC to install sealed concrete.
5	Manager	46 SF	SC	RB	P-3	P-3	P-3	P-3	Gyp. Bd. P-7	
6	Corridor	131 SF	SC	None/RB	P-1	P-1	P-1	P-1	Plywood & Batten Strips P-7	
7	Breakroom	54 SF	SC	RB	P-3	P-3	P-3	P-3	Gyp. Bd. P-7	
8	Toilet	49 SF	CT	CT - 6"	P-3 / CT	P-3 / CT	P-3 / CT	P-3 / CT	Gyp. Bd. P-7	CT wainscot. 4'-0" high.
9	Pit	1218 SF	SC	None	Unpainted	Unpainted	Unpainted	Unpainted	Exposed to structure above	

Finish Schedule for Additional Items:

1. Doors & Frames: Paint P-3	9. Keynote 16 & 17: P-1	17. Window Gaskets: Light Gray
2. Bollards: P-6	10. Keynote 19 and 59: P-3	18. Exterior Aluminum Storefront & Door: Clear Anodized
3. Exterior Pole Sign: By others.	11. Keynote 15: P-1	19. Abrasive Nosing: Safety Yellow
4. Downspouts/Gutters: Match Roof Color	12. Knox Box: Aluminum	20. Overhead Door: White
5. Electrical covers to be brushed aluminum	13. Roof: Royal Blue (Berridge)	21. Interior Aluminum Storefront & Door: Clear Anodized
6. Paint all louvers to match adjacent finish	14. Soffit: P-1	22. Wood Chair Rail: P-3
7. Epoxy Floor Grout used with CT: MAPEI 47 Charcoal	15. Coping Cap: Match roof color	
8. Stairs & Railings: P-5	16. Door Hardware: Satin Chrome	



Express Oil Change & Tire Engineers
 Right Hand Oil Change Building (Hurricane)
 2265 O'Neal Lane
 Baton Rouge, LA 70816

FINAL		
No.	Description	Date
1	Revision 1	9/15/20

© 2020 Aho Architects, LLC. All Rights Reserved.

Schedules	
Project number	20025
Date	08/27/2020
Drawn by	ARC
Checked by	TAA
OC-A620	
Scale	As indicated