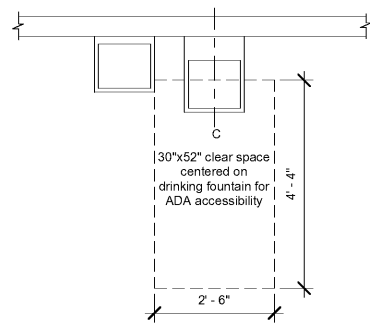
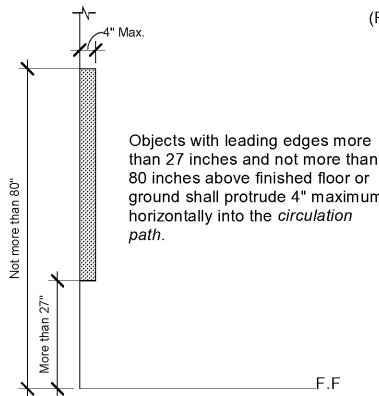


(For dimensional purposes only)



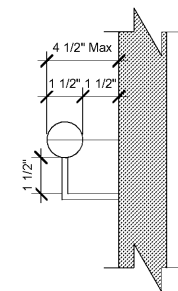
1 Drinking Fountain Mounting Details (Plan)  
1/2" = 1'-0"

(For dimensional purposes only)



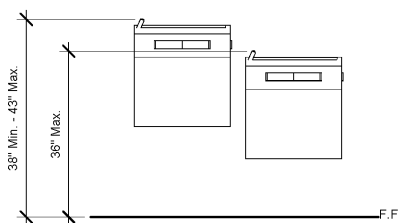
2 Limits of Protruding Objects  
1/2" = 1'-0"

(For dimensional purposes only)



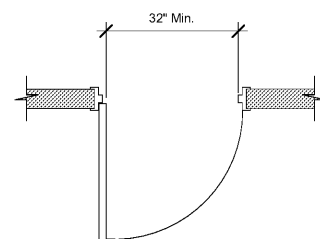
3 Handrail Detail  
3" = 1'-0"

(For dimensional purposes only)



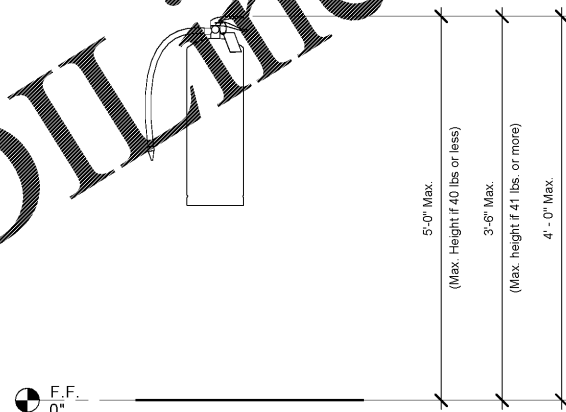
4 Drinking Fountain Mounting Details (Front)  
1/2" = 1'-0"

(For dimensional purposes only)



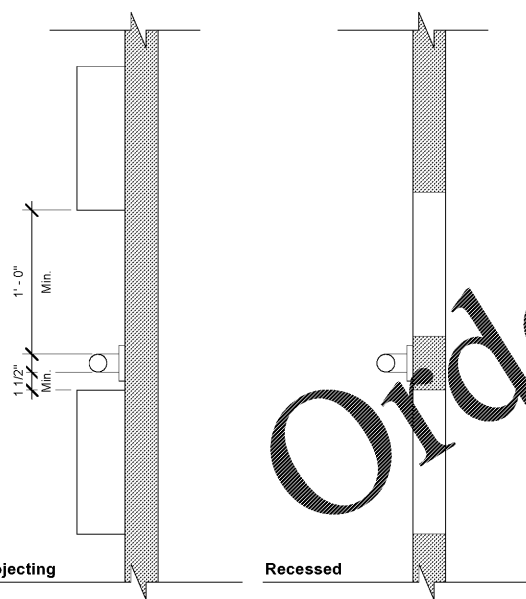
5 Clear Width of Doorways  
1/2" = 1'-0"

(For dimensional purposes only)



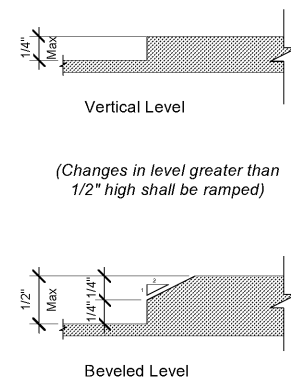
6 Bracket Mounted Fire Extinguisher  
1" = 1'-0"

(For dimensional purposes only)



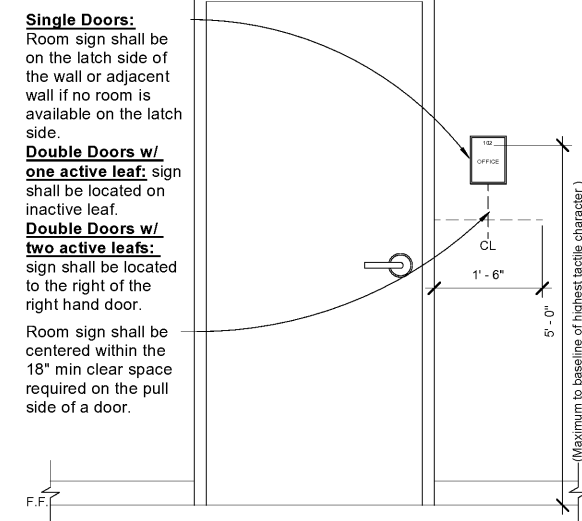
7 Spacing of Grab Bars  
1 1/2" = 1'-0"

(For dimensional purposes only)



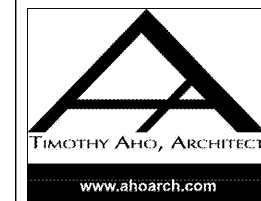
8 Level Change  
12" = 1'-0"

(For dimensional purposes only)



9 Signage Mounting Heights  
3/4" = 1'-0"

Order Plans @ WWW.LDILine.com



**Express Oil Change & Tire Engineers**  
Right Hand Oil Change Building (Hurricane)  
2265 O'Neal Lane  
Baton Rouge, LA 70816

FINAL

| No. | Description | Date |
|-----|-------------|------|
|     |             |      |
|     |             |      |
|     |             |      |
|     |             |      |
|     |             |      |

© 2020 Aho Architects, LLC. All Rights Reserved.

| Interior Dimensional Info. |              |
|----------------------------|--------------|
| Project number             | 20025        |
| Date                       | 08/27/2020   |
| Drawn by                   | ARC          |
| Checked by                 | TAA          |
| <b>OC-A605</b>             |              |
| Scale                      | As indicated |