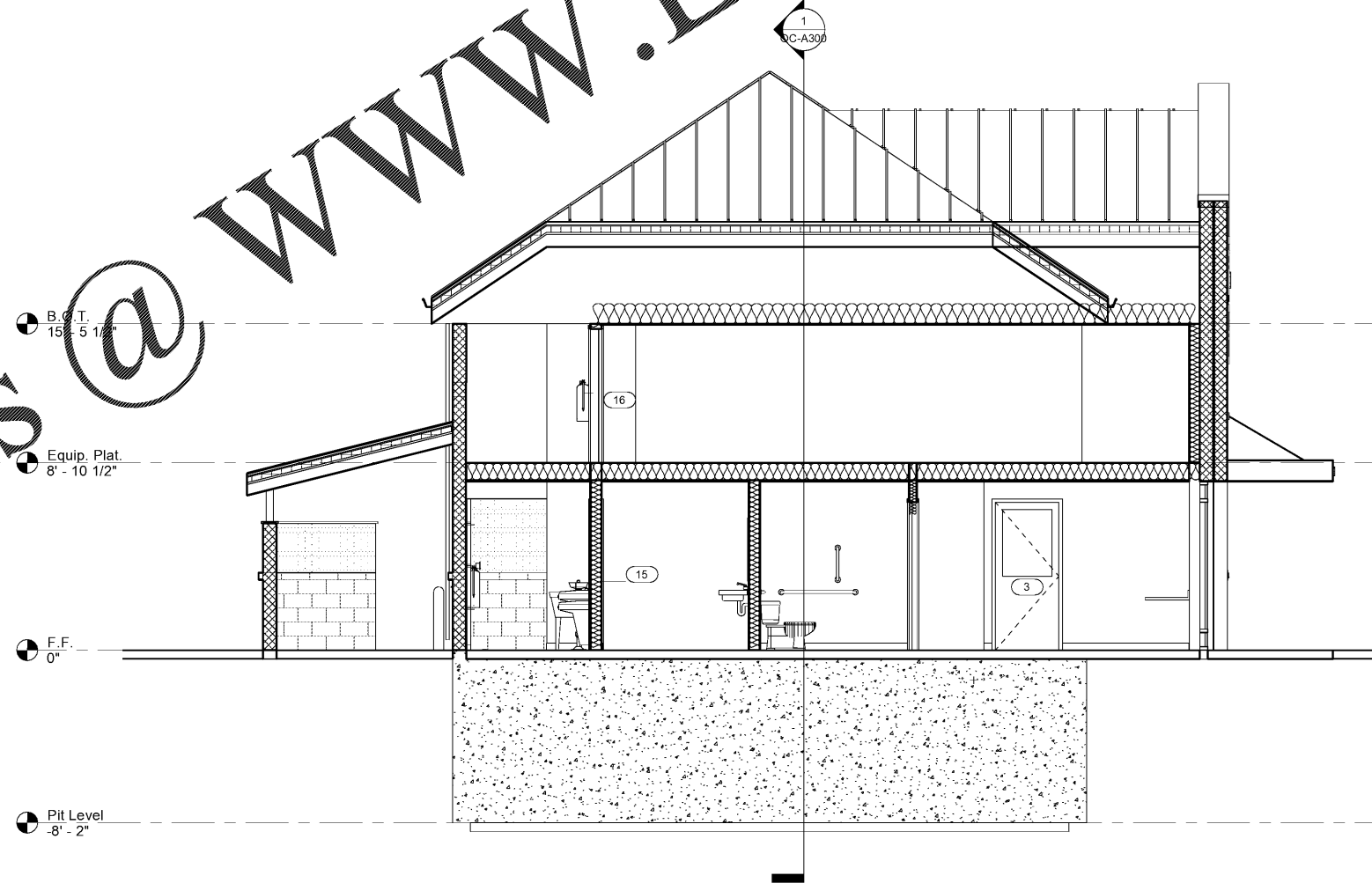


② Foundation (Slab on Grade)
1" = 1'-0"

Order Plans @ www.LDILine.com



① Section 6
1/4" = 1'-0"



Express Oil Change & Tire Engineers
Right Hand Oil Change Building (Hurricane)
2265 O'Neal Lane
Baton Rouge, LA 70816

FINAL

No.	Description	Date

© 2020 Aho Architects, LLC.
All Rights Reserved.

Building Sections

Project number	20025
Date	08/27/2020
Drawn by	ARC
Checked by	TAA
OC-A302	
Scale	As indicated