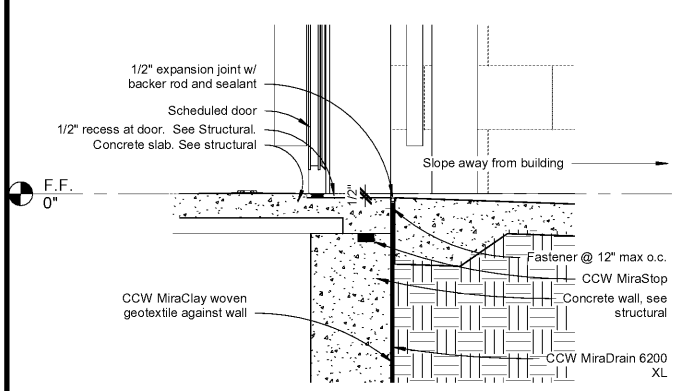
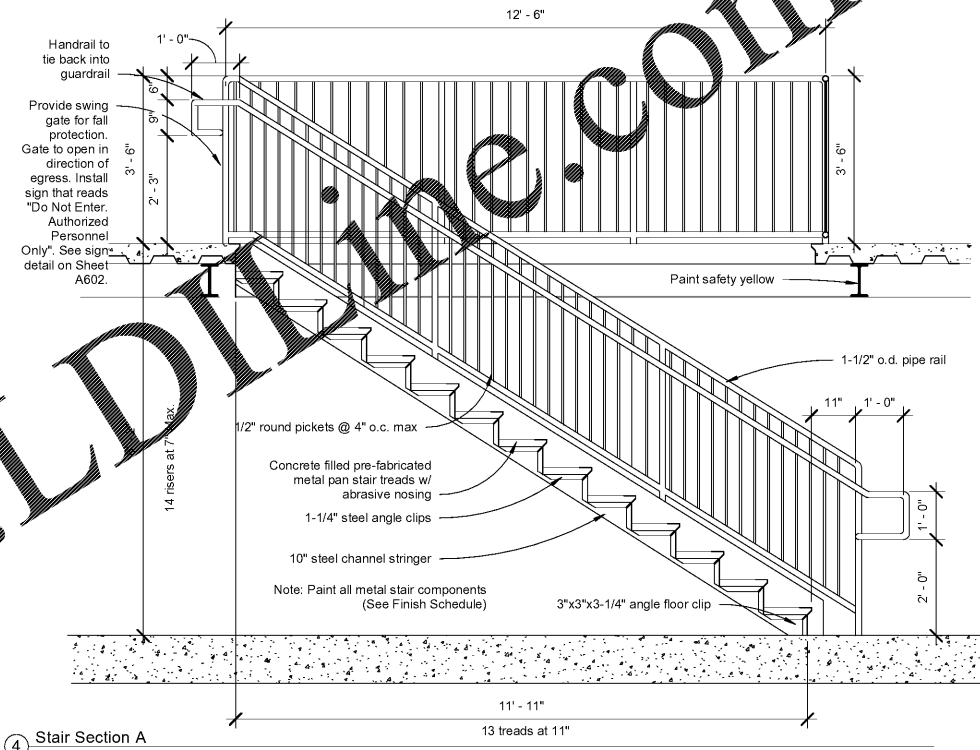


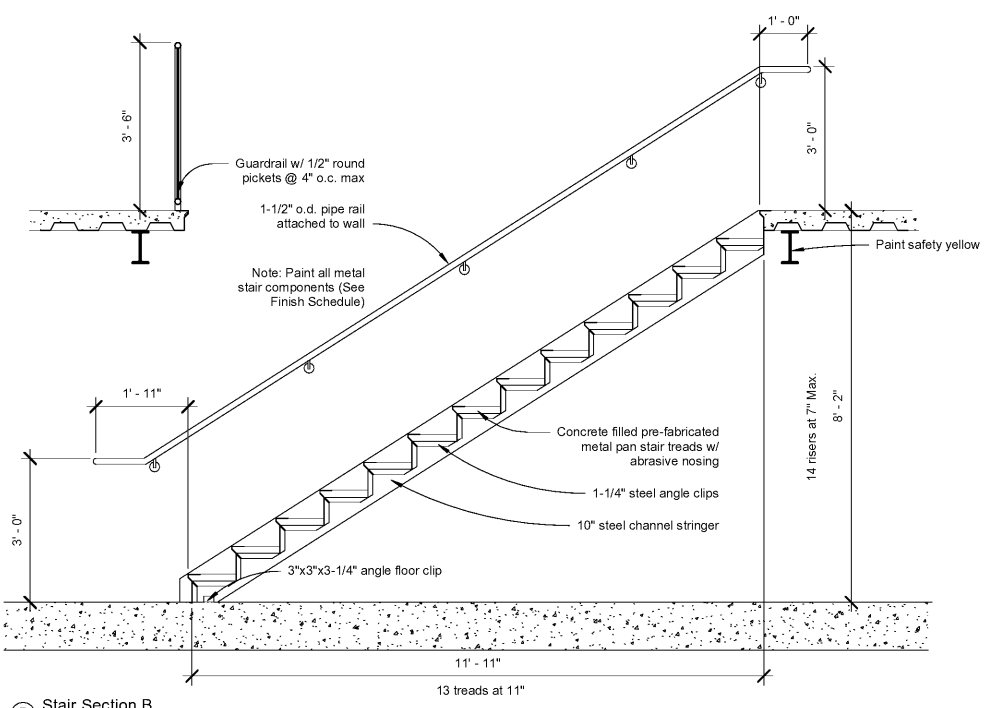
② Typical Ridge / Hip Detail
1" = 1'-0"



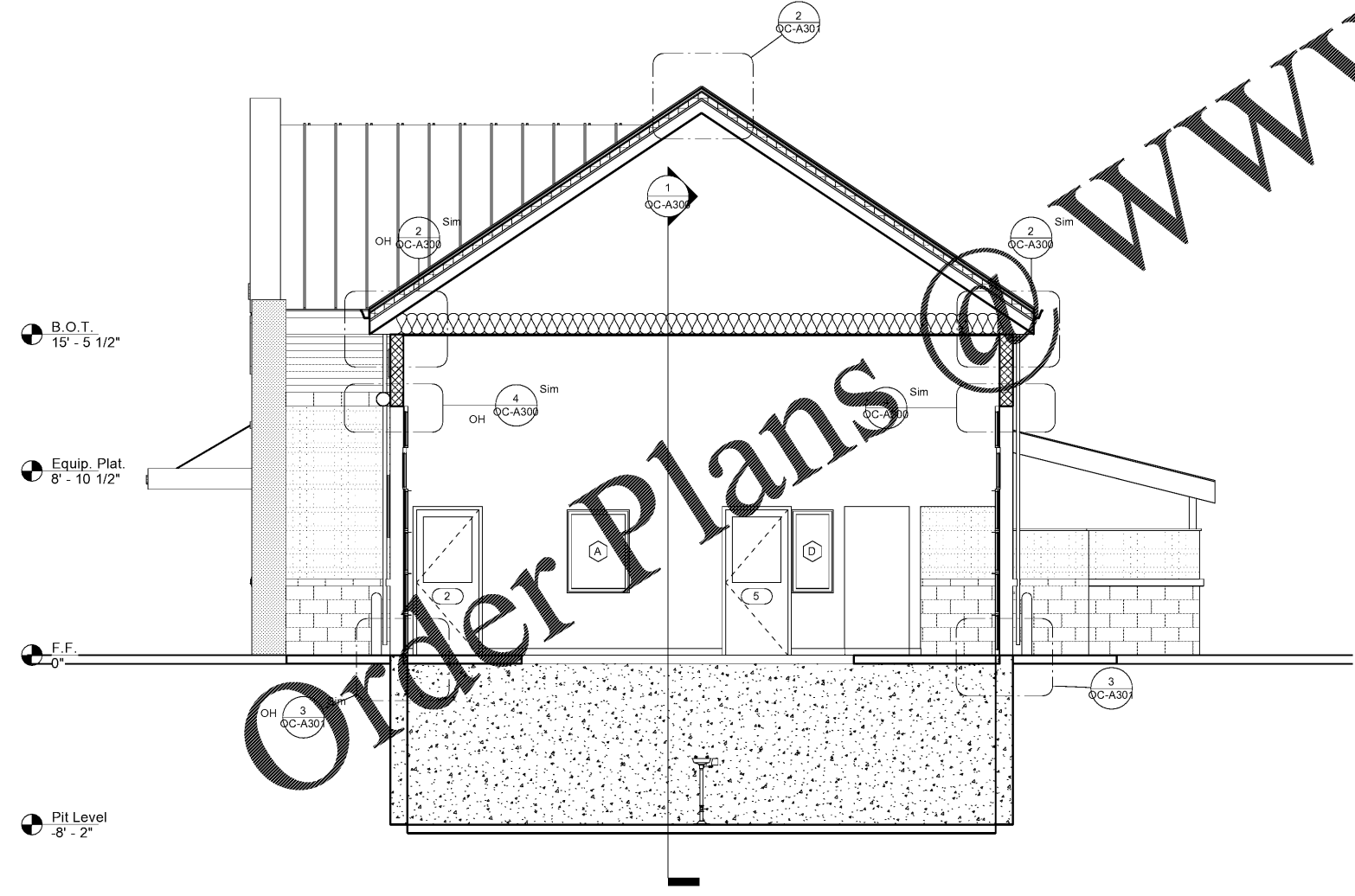
③ Slab Detail
1" = 1'-0"



④ Stair Section A
1/2" = 1'-0"



⑤ Stair Section B
1/2" = 1'-0"



① Section 2
1/4" = 1'-0"

Order Plans @

WWW.LDLINE.COM

Express Oil Change & Tire Engineers
Right Hand Oil Change Building (Hurricane)
2265 O'Neal Lane
Baton Rouge, LA 70816

FINAL

No.	Description	Date

© 2020 Aho Architects, LLC. All Rights Reserved.

Building Sections	
Project number	20025
Date	08/27/2020
Drawn by	EM
Checked by	TAA
OC-A301	
Scale	As indicated