

EXPRESS OIL CHANGE & TIRE ENGINEER STANDARDS - EXTERIOR

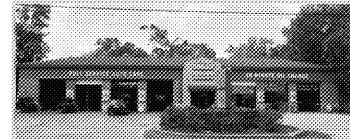
EXTERIOR

RED BRICK

On newer production buildings, the red brick is self-weathering. The blue stone veneer extends all the way up to the building on the end faces to the top of the brick veneer and all the way around the building. On Peak buildings, the brick is painted a dark gray.

The Dark Chicks are painted a light color. The windows that feature the logo are painted white. The windows are painted white.

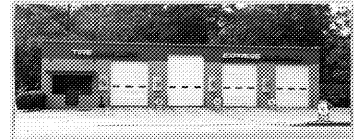
If the building does not have a Peak, you need to use the "Dark Chick" upper screen. Must have a Gray, Black, or Blue House.



PAINTED GRAY BRICK

Painted buildings include all of the same signs as the EOC buildings except the color is painted a dark gray. Discrepancies are painted to match the background of the building.

Must have a Gray, Black, or Blue House.



EXTERIOR

EOC & TE SIGN FOR PEAK BUILDINGS



EXTERIOR

CUSTOM LIGHTBAR

The new lightbar sits underneath the bottom over the on weather architectural component using the color and finish the exterior extension of light.

The lightbar is to sit even with the top of the bay doors and open across all bay doors.



CHANNEL LETTERS

White channel letters with 1/2" depth. Channel letter signs are to be installed on the exterior of the building. The letters are to be installed on the exterior of the building. The letters are to be installed on the exterior of the building.

These letters are to be installed on the exterior of the building. The letters are to be installed on the exterior of the building. The letters are to be installed on the exterior of the building.

FONT

©2020 Aho Architects - All Rights Reserved

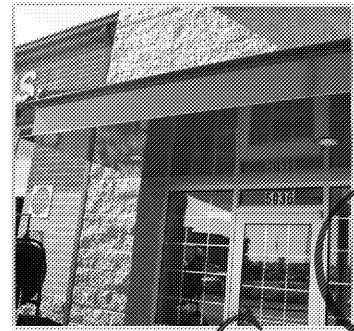
LETTERING FOR FRONT BUILDING
10 MINUTE OIL CHANGE
FULL SERVICE AUTO CARE
TIRE CENTER

LETTERING FOR BACK BUILDINGS
TIRE ALIGNMENT ROYAL & BALANCE
DIAGNOSTIC A/C BRAKES

EXTERIOR

AWNING

The new metal awning acts as a modern, industrial look to the building and features built-in lighting for customer entry and safety in use afterwards. Minimum space is 12' for most buildings.



SPAN LIGHTING

The new span lighting acts as a modern, industrial look to the building and features built-in lighting for customer entry and safety in use afterwards. Minimum space is 12' for most buildings.



Note: Items shown on this page are EOC standards. See Finish Schedule for actual materials to be used on this project.

Order Plans @ WWW.I.D.I.Lin



Express Oil Change & Tire Engineers
 Right Hand Oil Change Building (Hurricane)
 2265 O'Neal Lane
 Baton Rouge, LA 70816

FINAL

No.	Description	Date

© 2020 Aho Architects, LLC. All Rights Reserved.

EOC Standards - Exterior

Project number	20025
Date	08/27/2020
Drawn by	ARC
Checked by	TAA

OC-G300

Scale