

IRRIGATION SCHEDULE

SYMBOL	MANUFACTURER/MODEL/DESCRIPTION	QTY	PSI
R-VAN14	Rain Bird R-VAN14 180G-SAM-F30 Turf Rotary, 17" x 14" 45-270 degrees and 360 degrees. Hand Adjustable Multi-Stream Rotary w/1800 turf spray body on 6" pop-up, with check valve and 30 psi in-stem pressure regulator. 1/2" NPT Female Threaded inlet.	26	30
R-VAN24	Rain Bird R-VAN24 180G-SAM-F30 Turf Rotary, 17" x 24" 45-270 degrees and 360 degrees. Hand Adjustable Multi-Stream Rotary w/1800 turf spray body on 6" pop-up, with check valve and 30 psi in-stem pressure regulator. 1/2" NPT Female Threaded inlet.	26	30
XZ-LF-100-PRF	Rain Bird XZ-LF-100-PRF Low Flow Drip Control Kit, 1" Low Flow Valve, 3/4" Pressure Regulating RBY Filter, and 30psi Pressure Regulator. 0.2gpm-5gpm.	1	
TS	Pipe Transition Point in Drip Box Pipe transition point from PVC lateral to drip tubing with riser in 6" (150mm) drip box.	5	
DI	Rain Bird OPERIND Drip System Operation Indicator, stem rises 6" for clear visibility when drip system is changed to a minimum of 20psi. Includes 1/2" of 1/4" distribution tubing with connection fitting pre-installed.	1	
Area to Receive Drip Line	Rain Bird XFS-06-10 XFS Sub-Surface Pressure Compensating Drip Line w/Copper Shield Technology. 0.6 GPH emitters at 18" O.C. Laterals spaced at 18" apart, with emitters offset in triangular pattern. UV Resistant. Specify XF in design.	1,350	
PEB	Rain Bird PEB 1", 1-1/2", 2" Plastic Industrial Valves w/Flow Operating Capability. 1" Configuration.	5	
EFB-C	Rain Bird EFB-C 1", 1-1/4", 1-1/2" Brass Manometer Valve, that is Contamination Proof, Self-Flushing Filter Screen. Globe Configuration, Replaces Water Compatible, and Purple Plastic Cover Designates Non-Potable Water Use.	1	
765	Pressure Vacuum Breaker, brass with ball valve SOV. Install 12" (305MM) above highest downstream outlet and the highest point in the downstream piping.	1	
ESP4ME	Rain Bird ESP4ME with (1) ESP-SM3 7 Station, Hybrid Modular Outdoor Controller. For Residential or Light Commercial Applications.	1	
WR2-RFC	Rain Bird WR2-RFC Wireless Rain and Freeze Sensor Combo, includes 1 receiver and 1 rain/freeze sensor transmitter.	1	
M	Water Meter 1" Assumed Static Water Pressure 65 PSI, unless otherwise noted. Contact Landscape Architect immediately if different.	1	
---	Irrigation Lateral Line: PVC Class 200 SDR 21 All lateral pipes are 3/4" #34, unless labeled on plan.	1,258 l.f.	
---	Irrigation Mainline: PVC Class 200 SDR 21	691.4 l.f.	
---	Pipe Sleeves: PVC Schedule 40	90.0 l.f.	

CRITICAL ANALYSIS

Generated: 2020-09-03 12:55

P.O.C. NUMBER: 01
Water Source Information: Assumed Static Water Pressure 65 PSI, unless otherwise noted. Contact Landscape Architect immediately if different.

FLOW AVAILABLE
Water Meter Size: 1"
Flow Available: 20.23 gpm

PRESSURE AVAILABLE
Static Pressure at POC: 65.00 psi
Elevation Change: 0.00 ft
Service Line Size: 1"
Length of Service Line: 0.00 ft
Pressure Available: 65.00 psi

DESIGN ANALYSIS
Maximum Station Flow: 15.51 gpm
Flow Available at POC: 20.23 gpm
Residual Flow Available: 4.72 gpm

Pressure Loss at Critical Station:
Loss for Mainline: 0.01 psi
Loss for Lateral: 0.00 psi
Loss for Backflow: 3.54 psi
Loss for Water Valve: 0.63 psi
Loss for Water Meter: 0.63 psi
Critical Station Pressure at POC: 48.68 psi
Pressure Available: 65.00 psi
Residual Pressure Available: 16.32 psi

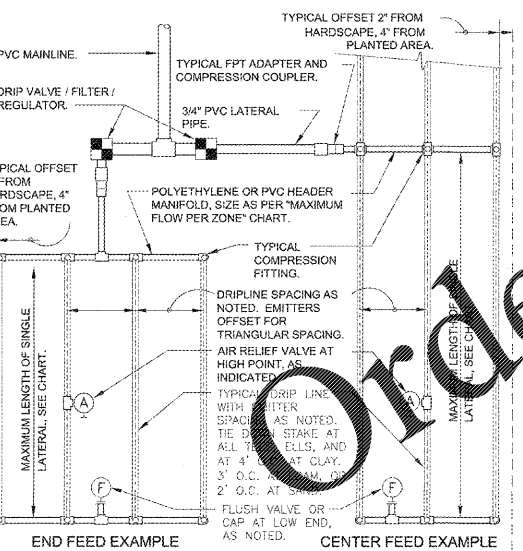
REVISION	BY

8352 Bluebonnet Blvd.
Baton Rouge, LA 70810
Office: 225-751-4490
Fax: 225-751-4455
www.ddgpc.com

Stamp area with signature and date: 9/8/2020

PROPOSED EXPRESS OIL CHANGE
BATON ROUGE, LOUISIANA
EAST BATON ROUGE PARISH
FOR EXPRESS OIL CHANGE
BIRMINGHAM, ALABAMA

DRAWN: CTY
CHECKED: CDD
ISSUED DATE: 09-03-2020
ISSUED FOR: PERMIT
PROJECT NO.: 20-197
FILE: 20-197 L-2 Irrigation Plan
SHEET: L-2.1

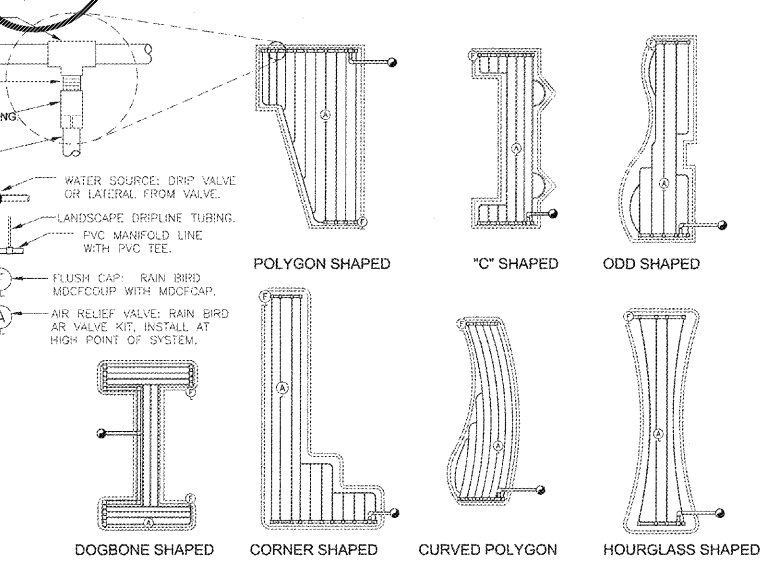


PSI	EMITTER FLOW RATE GPH		
	12" SPACING	18" SPACING	24" SPACING
10	125	96	175
20	249	191	350
30	373	287	525
40	500	383	700
50	625	479	875
60	750	575	1050

EMITTER SPACING	EMITTER FLOW RATE	
	PSI	GPH
12"	0.96	1.44
18"	0.69	1.03
24"	0.28	0.41

EMITTER FLOW	SPACING		
	12"	18"	24"
0.6 GPH	1.0 GPM	0.67 GPM	0.50 GPM
0.9 GPH	1.5 GPM	1.0 GPM	0.75 GPM

- SLOPED CONDITION NOTE:
1. DRIPLINE LATERALS SHOULD FOLLOW THE CONTOURS OF THE SLOPE WHENEVER POSSIBLE.
 2. INSTALL AIR RELIEF VALVE AT HIGHEST POINT.
 3. NORMAL SPACING WITHIN THE TOP 1/4 OF SLOPE.
 4. INSTALL DRIPLINE AT 25% GREATER SPACING AT THE BOTTOM 1/4 OF THE SLOPE.
 5. WHEN ELEVATION CHANGE IS 10 FT OR MORE, ZONE THE BOTTOM 1/4 ON A SEPARATE VALVE.

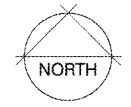
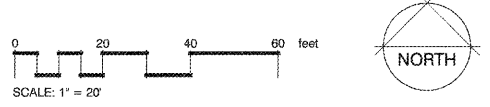


VALVE SCHEDULE

NUMBER	MODEL	SIZE	TYPE	GPM	WIRE	PSI	PSI @ POC	PRECIP
1	Rain Bird XZ-LF-100-PRF	1"	Area for Drip Line	9.25	362.6	43.62	48.68	0.43 in/h
2	Rain Bird PEB	1"	Turf Rotary	14.68	157.3	33.96	40.63	0.52 in/h
3	Rain Bird PEB	1"	Turf Rotary	15.50	207.8	34.06	41.07	0.41 in/h
4	Rain Bird PEB	1"	Turf Rotary	15.23	330.8	33.75	40.46	0.32 in/h
	Common Wire				691.4			

1 TYPICAL RAIN BIRD DRIPLINE REQUIREMENTS
N.T.S.

THE CONTRACTOR SHALL BE RESPONSIBLE FOR VERIFYING ALL QUANTITIES SHOWN ON THESE PLANS BEFORE PRICING THE WORK.



IRRIGATION PLAN

CALL LOUISIANA ONE CALL --- 1-800-272-3020
LOUISIANA STATE LAW, SECTION 933:001(PART 1), REQUIRES EXCAVATORS & DEMOLISERS TO NOTIFY A REGIONAL NOTIFICATION CENTER BY TELEPHONE 48 HOURS IN ADVANCE OF ANY EXCAVATION OR DEMOLITION ACTIVITY. THE OWNERS/OPERATORS OF ANY UNDERGROUND FACILITY MUST THEN MARK THE AREA OR PROVIDE INFORMATION THAT WILL ENABLE AN EXCAVATOR OR DEMOLISER TO DETERMINE THE LOCATION OF UNDERGROUND FACILITIES.