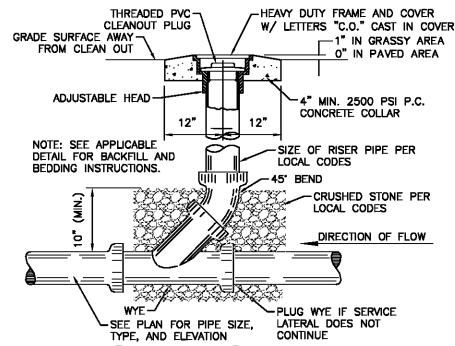


- GENERAL NOTES**
1. BEDDING SHALL BE #57 STONE OR RECYCLED CONCRETE CONFORMING TO SUBSECTION 1003.01 LOUISIANA STANDARD SPECIFICATIONS FOR ROADS AND BRIDGES, 2000 EDITION, COMPACTED 90% MAXIMUM DRY DENSITY (ASTM D698).
 2. HAUNCHING SHALL BE WORKED AROUND THE PIPE BY HAND TO ELIMINATE VOIDS AND SHALL BE SAME MATERIAL AS BEDDING.
 3. FINAL BACKFILL SHALL BE PUMPED RIVER SAND, OR OTHER SELECT MATERIAL CONFORMING TO LSSRB 2000 EDITION.
 4. FINAL BACKFILL SHALL BE COMPACTED TO 95% STANDARD PROCTOR. (ASTM D698).
 5. ALL MATERIALS SHALL BE INSTALLED IN MAXIMUM 8" LOOSE LIFTS IN ACCORDANCE WITH ASTM D 698.
 6. ALL TRENCH EXCAVATIONS SHALL BE SLOPED, SHORED, SHEETED, BRACED, OR OTHERWISE SUPPORTED IN COMPLIANCE WITH OSHA REGULATIONS AND LOCAL ORDINANCES. (SEE SPECIFICATIONS).
 7. GEOTEXTILE FABRIC SHALL BE MIRAFI 600 OR APPROVED EQUAL.
 8. GEOTEXTILE FABRIC SHALL BE PLACED AT THE INTERFACE OF THE BEDDING MATERIAL AND NATURAL SUBGRADE AS WELL AS AROUND THE PIPE AT EACH JOINT.

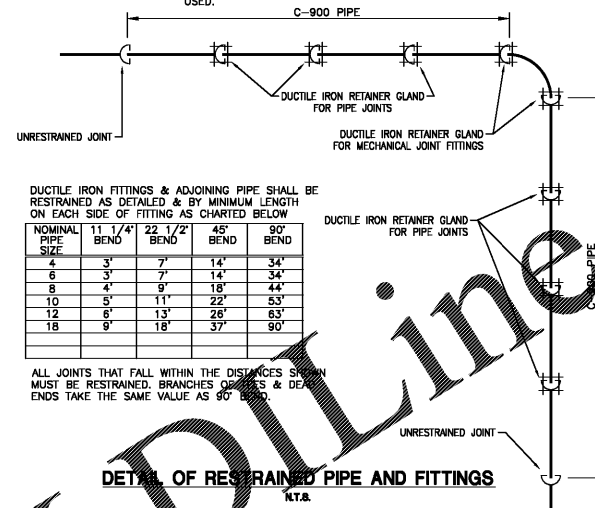
STORM SEWER TRENCH AND BEDDING
N.T.S.



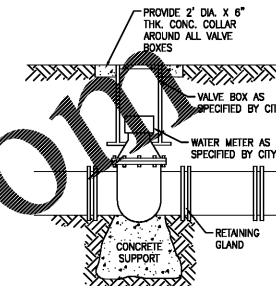
- NOTE: SEE APPLICABLE DETAIL FOR BACKFILL AND BEDDING INSTRUCTIONS.**
- SIZE OF RISER PIPE PER LOCAL CODES
- CRUSHED STONE PER LOCAL CODES
- 45° BEND
- 10" (MIN.)
- WYE
SEE PLAN FOR PIPE SIZE, TYPE, AND ELEVATION
- PLUG WYE IF SERVICE LATERAL DOES NOT CONTINUE

SANITARY SEWER CLEANOUT
N.T.S.

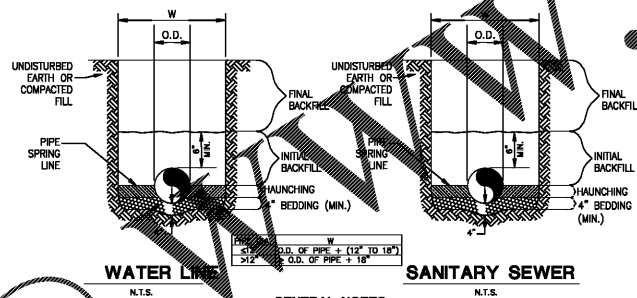
- NOTES:**
1. DISTANCES OF RESTRAINTS SHALL BE REQUIRED ON EVERY JOINT(S) ON EACH SIDE OF FITTING, IN ADDITION TO CONCRETE OR TIMBER BLOCKING.
 2. RESTRAINTS NOT REQUIRED INSIDE OF CASING WHEN FITTING OR PIPE IS RODDED TO CASING ENDS.
 3. RESTRAIN TEE WHEN USED AS A 90° BEND, DEAD END, OR AS NOTED ON PLANS.
 4. AT ALL ROAD CROSSINGS AND WHERE NOTED ON PLANS, FITTINGS NOTED ON PLANS.
 5. TEE-INS SHALL BE RESTRAINED AS IF A 90° BEND.
 6. RESTRAINT SYSTEM:
EITHER: (A) RODS FOR USE WITH MECHANICAL JOINT FITTINGS - 2 REQUIRED - 5/8" DIA. STAINLESS STEEL FOR 8" PIPE & BELOW
(B) RETAINER GLAND: USE EBBA IRON, UNI-FLANGE OR EQUAL IN COMPLIANCE WITH PIPE MATERIAL USED.



DETAIL OF RESTRAINED PIPE AND FITTINGS
N.T.S.

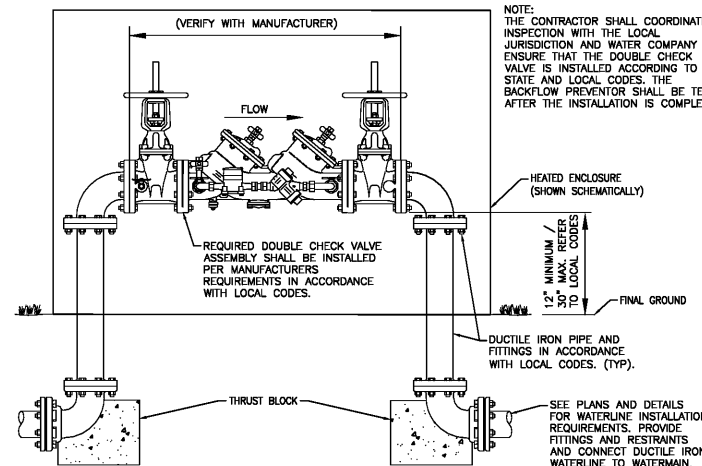


WATER METER WITH VALVE BOX
N.T.S.

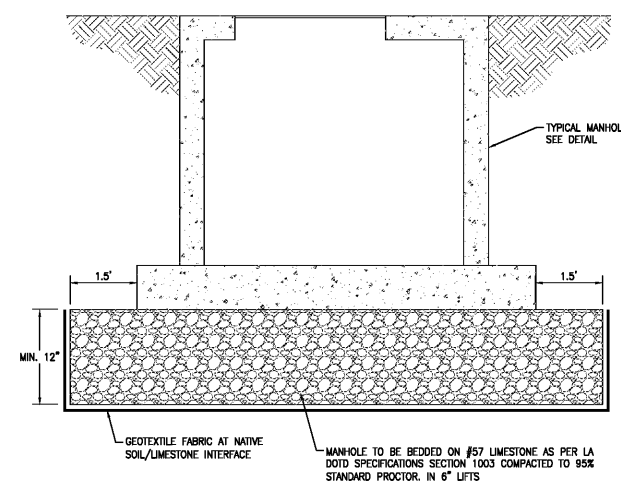


- GENERAL NOTES**
1. BEDDING SHALL BE CLASS I-A WORKED BY HAND, IF GROUNDWATER IS ANTICIPATED, THEN BEDDING SHALL BE CLASS I-B COMPACTED TO 85% STANDARD PROCTOR.
 2. HAUNCHING SHALL BE WORKED AROUND THE PIPE BY HAND TO ELIMINATE VOIDS AND SHALL BE CLASS I-A OR CLASS I-B OR CLASS II COMPACTED TO 85% PROCTOR.
 3. INITIAL BACKFILL SHALL BE CLASS I-A WORKED BY HAND, OR CLASS I-B OR CLASS II COMPACTED TO 85% STANDARD PROCTOR.
 4. FINAL BACKFILL NOT UNDER PAVED AREAS CAN BE CLASS II COMPACTED TO 90% STANDARD PROCTOR.
 5. FINAL BACKFILL SHALL BE CLASS I, II, OR III COMPACTED AS NOTED IN NOTES 3. AND 4.
 6. FINAL BACKFILL NOT UNDER PAVED AREAS CAN BE CLASS IV-A COMPACTED TO 95% STANDARD PROCTOR.
 7. ALL MATERIALS ARE CLASSIFIED IN ACCORDANCE WITH ASTM D 2321-88.
 8. ALL MATERIALS SHALL BE INSTALLED IN MAXIMUM 8" LOOSE LIFTS IN ACCORDANCE WITH ASTM D 698. CLASS III AND IV-A MATERIALS SHALL BE COMPACTED NEAR OPTIMUM MOISTURE CONTENT.
 9. FILL SALVAGED FROM EXCAVATION SHALL BE FREE OF DEBRIS, ORGANICS AND ROCKS LARGER THAN 3".
 10. ALL TRENCH EXCAVATIONS SHALL BE SLOPED, SHORED, SHEETED, BRACED, OR OTHERWISE SUPPORTED IN COMPLIANCE WITH OSHA REGULATIONS AND LOCAL ORDINANCES. (SEE SPECIFICATIONS)

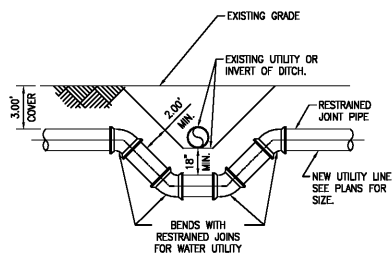
UTILITY TRENCH AND BEDDING
N.T.S.



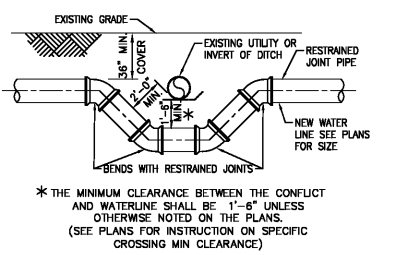
DOUBLE CHECK DETECTOR ASSEMBLY FOR FIRE LINE OUTDOOR INSTALLATION
N.T.S.



STORM AND SANITARY SEWER MANHOLE BEDDING DETAIL
N.T.S.



UTILITY OFFSET



WATER LINE OFFSET DETAIL
N.T.S.

Order Plans

REVISION	BY

314 E. Bayou Road
Thibodaux, LA 70301
Office: 985.447.0090
Fax: 985.447.7009
www.ddgpc.com

DDG
DUPLANTIS DESIGN GROUP

SIGNATURE: *[Signature]*
DATE: 09-27-2020

STAMP:

PROPOSED EXPRESS OIL CHANGE
BATON ROUGE, LOUISIANA
EAST BATON ROUGE PARISH
FOR EXPRESS OIL CHANGE
BIRMINGHAM, ALABAMA

DRAWN G.P.
CHECKED BAB
ISSUED DATE 09-27-2020
ISSUED FOR PERMIT
PROJECT NO. 20-197
FILE 20-197 C-5 DETAILS
SHEET C-8

DETAIL SHEET

