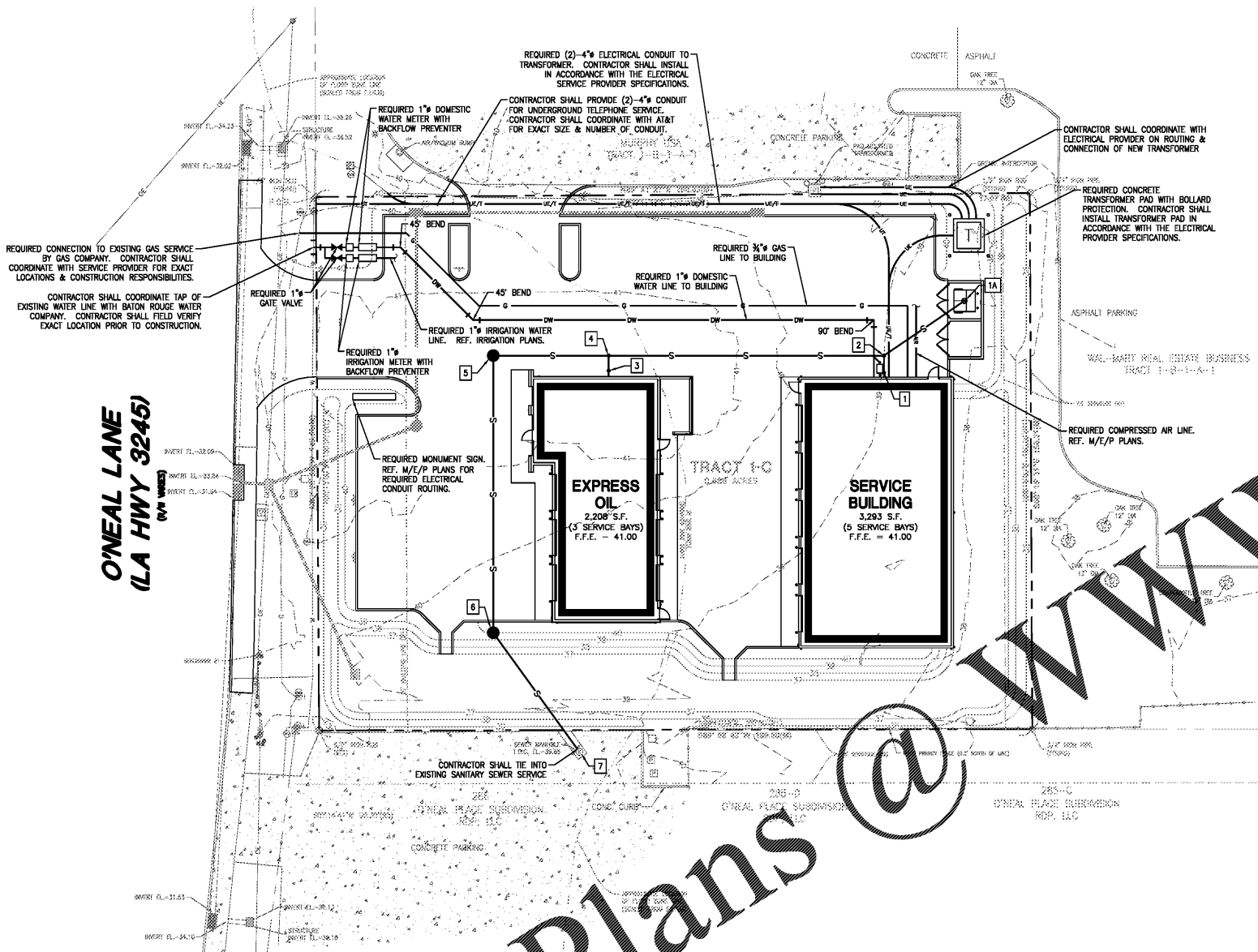


LEGEND - NEW IMPROVEMENTS

- DOMESTIC WATERLINE
- IRRIGATION WATERLINE
- SANITARY SEWERLINE
- GAS LINE
- UNDERGROUND TELEPHONE & ELECTRIC
- UNDERGROUND TELEPHONE
- UNDERGROUND ELECTRIC
- STORM DRAIN SYSTEM
- SEWER MANHOLE & STRUCTURE #

LEGEND - EXISTING

- PROPERTY CORNER
- DOTD ROW MONUMENT
- CALCULATED PROPERTY CORNER
- POWER JUNCTION BOX
- POWER VAULT
- POWER DROP
- ELECTRICAL UTILITY MARKER
- TELEPHONE PEDESTAL
- POWER POLE
- WATER VALVE
- WATER CLEANOUT
- BILLBOARD SIGN POST
- GAS VALVE
- GAS METER
- GAS UTILITY MARKER
- SEWER MANHOLE
- SEWER CLEANOUT
- SIGN POST
- LIGHT POLE
- ELEVATION POINT
- TREE
- BARRIQUADE POST
- TRAFFIC SIGNAL CONTROL BOX
- TELEPHONE CROSS CONNECT BOX
- CURB INLET
- DRAIN INLET
- HWY. R/W MONUMENT W/SIGN
- MEASURED
- REFERENCE
- RIGHT OF WAY
- DRAINAGE PIPE
- OVERHEAD POWERLINE
- UNDERGROUND POWERLINE
- UNDERGROUND GAS LINE
- UNDERGROUND WATER LINE
- PROPERTY LINE
- ADJACENT PROPERTY LINE
- GROUND CONTOUR LINE
- WOODEN FENCE
- SERVITUDE / SETBACK LINE
- FLOODZONE LINE



UTILITY NOTES:

- CONTRACTOR IS RESPONSIBLE FOR VERIFYING ALL UTILITIES & NOTIFYING THE APPROPRIATE UTILITY COMPANY PRIOR TO BEGINNING CONSTRUCTION.
- CONTRACTOR IS SPECIFICALLY CAUTIONED THAT THE LOCATION &/OR ELEVATION OF EXISTING UTILITIES AS SHOWN ON THESE PLANS IS BASED ON RECORD DRAWINGS OF VARIOUS UTILITIES & WHERE POSSIBLE, MEASUREMENTS TAKEN IN THE FIELD. THE INFORMATION IS NOT TO BE RELIED ON AS BEING EXACT OR COMPLETE. THE CONTRACTOR MUST CALL THE APPROPRIATE UTILITY COMPANY AT LEAST 72 HOURS BEFORE ANY EXCAVATION TO REQUEST EXACT FIELD LOCATION OF THE UTILITIES. IT SHALL BE THE RESPONSIBILITY OF THE CONTRACTOR TO VERIFY THE LOCATION OF UTILITIES WHICH CONFLICT WITH THE PROPOSED IMPROVEMENTS SHOWN ON THE PLANS. CONTRACTOR SHALL VERIFY HORIZONTAL & VERTICAL LOCATION OF ALL EXISTING STORM SEWER STRUCTURES, PIPES, & ALL UTILITIES PRIOR TO CONSTRUCTION.
- CONTRACTOR TO REMOVE OR RELOCATE WHEN APPLICABLE, ALL EXISTING BUILDINGS, FOUNDATIONS, EASEMENTS, & CONNECTING IMPROVEMENTS, DRAIN PIPES, SANITARY SEWER PIPE, POWER POLES & CUY WRES, WATER METERS & WATER LINES, WELLS, SIDEWALKS, SIGN POLES, UNDERGROUND GAS, SEPTIC TANKS, & ASPHALT, SHOWN & NOT SHOWN, WITHIN CONSTRUCTION LIMITS & WHERE NEEDED, TO ALLOW FOR FILL MATERIAL, UNLESS OTHERWISE DENOTED, TO BE REMOVED AS UNCLASSIFIED EXCAVATION.
- CONTRACTOR IS RESPONSIBLE FOR REPAIRS OF DAMAGE TO ANY EXISTING IMPROVEMENTS DURING CONSTRUCTION, SUCH AS, BUT NOT LIMITED TO, UTILITIES, PAVEMENT, STRIPING, CURBS, ETC. REPAIRS SHALL BE EQUAL TO OR BETTER THAN EXISTING CONDITIONS.
- CONTRACTOR SHALL REFER TO ARCHITECT'S PLANS & SPECIFICATIONS FOR ACTUAL LOCATION OF ALL UTILITY ENTRANCES TO INCLUDE SANITARY SEWER LATERALS, DOMESTIC & FIRE PROTECTION WATER SERVICE, ELECTRICAL, TELEPHONE, CABLE TV, & GAS SERVICE.
- CONTRACTOR SHALL COORDINATE INSTALLATION OF UTILITIES IN SUCH A MANNER AS TO AVOID CONFLICTS & ASSURE PROPER DEPTHS ARE ACHIEVED AS WELL AS COORDINATING WITH CITY UTILITY REQUIREMENTS AS TO LOCATIONS & SCHEDULING FOR THE INS/CONNECTIONS PRIOR TO CONNECTING EXISTING FACILITIES.
- CONTRACTOR SHALL COORDINATE WITH ARCHITECTURAL PLANS, POWER COMPANY, & TELEPHONE COMPANY FOR ACTUAL ROUTING OF POWER & TELEPHONE SERVICE TO BUILDING.
- CONSTRUCTION SHALL COMPLY WITH ALL GOVERNING CODES & BE CONSTRUCTED TO SAME.
- SEE SPECIFICATIONS FOR BACKFILLING & COMPACTION REQUIREMENTS ON UTILITY TRENCHES.
- CONTRACTOR SHALL COMPLY TO THE FULLEST EXTENT WITH THE LATEST STANDARD OF OSHA DIRECTIVES OR ANY OTHER AGENCY HAVING JURISDICTION FOR EXCAVATION & TRENCHING PROCEDURES. THE CONTRACTOR SHALL USE SUPPORT SYSTEMS, SLOPING, BENCHING, & OTHER MEANS OF PROTECTION. THIS IS NOT LIMITED TO, BUT NOT LIMITED TO, ACCESS & EGRESS FROM ALL EXCAVATION & TRENCHING. CONTRACTOR IS RESPONSIBLE TO COMPLY WITH PERFORMANCE CRITERIA FOR OSHA.
- SITENETWORK FOR THIS PROJECT SHALL MEET OR EXCEED THE PROJECT ISSUED STANDARD SITENETWORK SPECIFICATIONS.
- CONTRACTOR SHALL COORDINATE WITH OTHER UTILITIES TO ASSURE PROPER DEPTH & PREVENT ANY CONFLICT OF UTILITIES.
- THE MINIMUM HORIZONTAL SEPARATION BETWEEN THE CLOSEST TWO POINTS OF THE WATER & SEWER LINE IS TEN (10) FEET, OR MINIMUM VERTICAL SEPARATION BETWEEN THE CLOSEST TWO POINTS OF THE WATER & SEWER LINE IS EIGHTEEN (18) INCHES.
- CONTRACTOR SHALL GROUT AROUND ALL PIPE ENTRANCES TO SANITARY SEWER MANHOLES WITH NON-SHRINKING GROUT TO ASSURE CONNECTION IS WATER TIGHT.
- CONTRACTOR SHALL ON ALL UTILITIES, COORDINATE INSPECTION WITH THE APPROPRIATE AUTHORITIES PRIOR TO COVERING TRENCHES AT INSTALLATION.
- CONSTRUCTION SHALL COMPLY WITH ALL GOVERNING CODES & REQUIREMENTS. THE CONTRACTOR SHALL CONDUCT ALL REQUIRED TESTS TO THE SATISFACTION OF THE RESPECTIVE UTILITY COMPANIES & INSPECTING AUTHORITIES.
- SITE CONTRACTOR TO COORDINATE PROPOSED RECONNECTION OF ALL UTILITIES WITH ARCHITECTURAL PLANS AS WELL AS UTILITY COMPANIES & BUILDING CONTRACTOR.
- FOR GENERAL NOTES SEE DRAWING C-1.
- ALL NECESSARY INSPECTIONS &/OR CERTIFICATIONS REQUIRED BY CODES &/OR UTILITY SERVICE COMPANIES SHALL BE PERFORMED PRIOR TO ANNOUNCED BUILDING POSSESSION & THE FINAL CONNECTION OF SERVICES.

WATER NOTES:

- ALL WORK SHALL BE DONE IN ACCORDANCE WITH BATON ROUGE WATER COMPANY STANDARDS.
- REFERENCE ARCHITECT'S PLANS FOR ALL BUILDING FIRE SERVICE & DOMESTIC SERVICE CONNECTION LOCATIONS.
- CONTRACTOR SHALL CONSTRUCT WATER SERVICES AS SHOWN, & CONSTRUCT METERS, PITS, & INSTALL CHECK VALVE.
- ALL SPRINKLER & DOMESTIC LEADS TO BUILDING SHALL END AT THE FACE OF BUILDING WALL, UNLESS NOTED, & SHALL BE PROVIDED WITH A TEMPORARY PLUG AT END (FOR OTHERS TO REMOVE & EXTEND AS NECESSARY).
- ALL VERTICAL BENDS ON WATER MAIN SHALL BE RESTRAINED WITH A MECHANICAL JOINT FITTING SUPPLIED WITH THE RETAINER GLANDS. ANY JOINTS 25 FEET OR LESS FROM EITHER SIDE OF VERTICAL BEND SHALL BE RESTRAINED WITH A RETAINER GLAND. ANY JOINTS 25 FEET OR LESS FROM EITHER SIDE OF VERTICAL BEND SHALL BE RESTRAINED WITH A RETAINER GLAND.
- DIMENSIONS SHOWN ARE TO CENTERLINE OF PIPE OR FITTING.
- ALL VALVES SHALL BE INSTALLED IN A CAST IRON VALVE BOX WITH COVER.
- THRUST BLOCKS SHALL BE PROVIDED AT ALL HORIZONTAL BENDS, TEES, & FIRE HYDRANTS. SEE DETAIL.
- THE MINIMUM COVER ON WATER MAINS SHALL BE 3 FEET.
- PIPE SIZES 3" & SMALLER SHALL BE PVC. FITTINGS SHALL BE BRASS. SEE SPECIFICATIONS.
- PIPE SIZES 4" & LARGER SHALL BE PVC C-900 WATER PIPE. ALL FITTINGS 4" & LARGER SHALL BE CAST IRON CONFORMING TO ANSI & AWWA STANDARD SPECIFICATIONS.
- GATE VALVES 3/4" THROUGH 3" SHALL BE BRONZE WEDGE TYPE GATE VALVE. VALVES SHALL HAVE NON-RISING STEM WITH SOLID TEE HEAD OPERATING NUT UNLESS NOTED OTHERWISE.
- GATE VALVES 4" & LARGER SHALL BE CAST IRON GATE VALVE WITH PARALLEL DOUBLE DISC. VALVES SHALL HAVE MECHANICAL JOINT ENDS & NON-RISING STEM WITH SQUARE OPERATING NUT.
- PLUMBING CONTRACTOR IS RESPONSIBLE FOR COORDINATION OF IRRIGATION TAP, METER & BACKFLOW DEVICES PRIOR TO INSTALLATION. GENERAL CONTRACTOR IS RESPONSIBLE TO COORDINATE THE IRRIGATION SYSTEM REQUIREMENT BETWEEN THE IRRIGATION CONTRACTOR & PLUMBING CONTRACTOR. IRRIGATION TAP, METERS ETC. SHALL BE INCLUDED IN GENERAL CONTRACTORS BASE BID.

TELEPHONE NOTES:

- ALL PHONE LINE LOCATIONS ARE APPROXIMATE & SHOWN FOR COORDINATION PURPOSES ONLY. REFERENCE ARCHITECT'S PLANS FOR ALL BUILDING SERVICE CONNECTIONS.

SANITARY SEWER NOTES:

- ALL WORK SHALL BE DONE IN ACCORDANCE WITH EAST BATON ROUGE PARISH PUBLIC WORKS & THE STATE DEPARTMENT OF HEALTH & HOSPITAL STANDARDS.
- REFERENCE ARCHITECT'S PLANS FOR ALL BUILDING SERVICE CONNECTIONS.
- CONTRACTOR SHALL PAY ALL FEES & CHARGES PERTINENT TO SANITARY SEWER CONSTRUCTION & SHALL COORDINATE WITH EAST BATON ROUGE PARISH PUBLIC WORKS PRIOR TO COMMENCING WITH CONSTRUCTION.
- ALL STUB-OUTS & WYE LATERALS SHALL BE PLUGGED WITH A STANDARD TYPE PLUG.
- SANITARY SEWER PIPE OF DIFFERENT MATERIAL SHALL BE JOINED BY A RUBBER SLEEVE WITH STAINLESS STEEL COUPLING, MADE FOR TRANSITIONS FROM ONE MATERIAL TO ANOTHER.
- DIMENSIONS SHOWN ARE TO CENTERLINE OF PIPE OR TO CENTERLINE OF MANHOLE.
- THE SANITARY SEWER PIPE MATERIAL SHALL BE PVC, SDR 35, SEWER PIPE UNLESS OTHERWISE NOTED ON PLAN.

POWER NOTES:

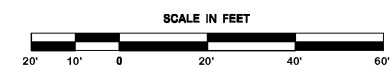
- REFERENCE ARCHITECT'S PLANS FOR ALL BUILDING SERVICE CONNECTIONS.
- ALL PRIMARY & SECONDARY SERVICE LOCATIONS ARE APPROXIMATE & ARE SHOWN FOR COORDINATION PURPOSES ONLY. CONTRACTOR IS RESPONSIBLE FOR COORDINATING WITH THE POWER COMPANY, TO DETERMINE EXACT LOCATION & RESPONSIBILITIES INCLUDING COST.

GAS NOTES:

- THE GAS COMPANY WILL INSTALL THE REQUIRED GAS MAIN FROM THE POINT OF CONNECTION TO & INCLUDING THE METER INSTALLATION. THE CONTRACTOR IS RESPONSIBLE FOR THE GAS LINE INSTALLATION FROM THE METER TO THE BUILDING.

STRUCTURE TABLE						
STRUCTURE NUMBER	TYPE	CHUTE/CASTING/ELEV	INVERT IN	ELEVATION OUT	PIPE LENGTH	PIPE TYPE PIPE SLOPE
1	CLEANOUT	40.80		39.00 (2)	5	6" PVC 1.00%
1A-2	DUMPSTER DRAIN	0.00		39.22 (2)	27	6" PVC 1.00%
2	CLEANOUT	40.70	38.95 (1) 38.95 (1A)	38.95 (4)	77	6" PVC 1.00%
3	CLEANOUT	40.80		38.50 (4)	4	6" PVC 1.00%
4	CLEANOUT	40.70	38.18 (2) 38.48 (3)	38.18 (5)	32	6" PVC 1.00%
5	MANHOLE	40.60	37.86 (4)	37.86 (6)	78	6" PVC 1.00%
6	MANHOLE	40.50	37.08 (5)	37.08 (7)	41	6" PVC 1.00%
7	EXISTING MANHOLE	38.65	36.87 (6)	MATCH EXISTING		

UTILITY PLAN



Not For Construction



Order Plans @

O'NEAL LANE
(LA HWY 3245)

REVISION	BY

314 E. Bayou Road
Thibodaux, LA 70301
Office: 985.447.0090
Fax: 985.447.7009
www.ddgpc.com

DDG
DUPLANTIS DESIGN GROUP

Stamp area with signature and date: 09-27-2020

PROPOSED EXPRESS OIL CHANGE
BATON ROUGE, LOUISIANA
EAST BATON ROUGE PARISH
FOR EXPRESS OIL CHANGE
BIRMINGHAM, ALABAMA

DRAWN G.P.
CHECKED BAB
ISSUED DATE 09-27-2020
ISSUED FOR PERMIT
PROJECT NO. 20-197
FILE 20-197 C-3 UTILITY
SHEET C-3