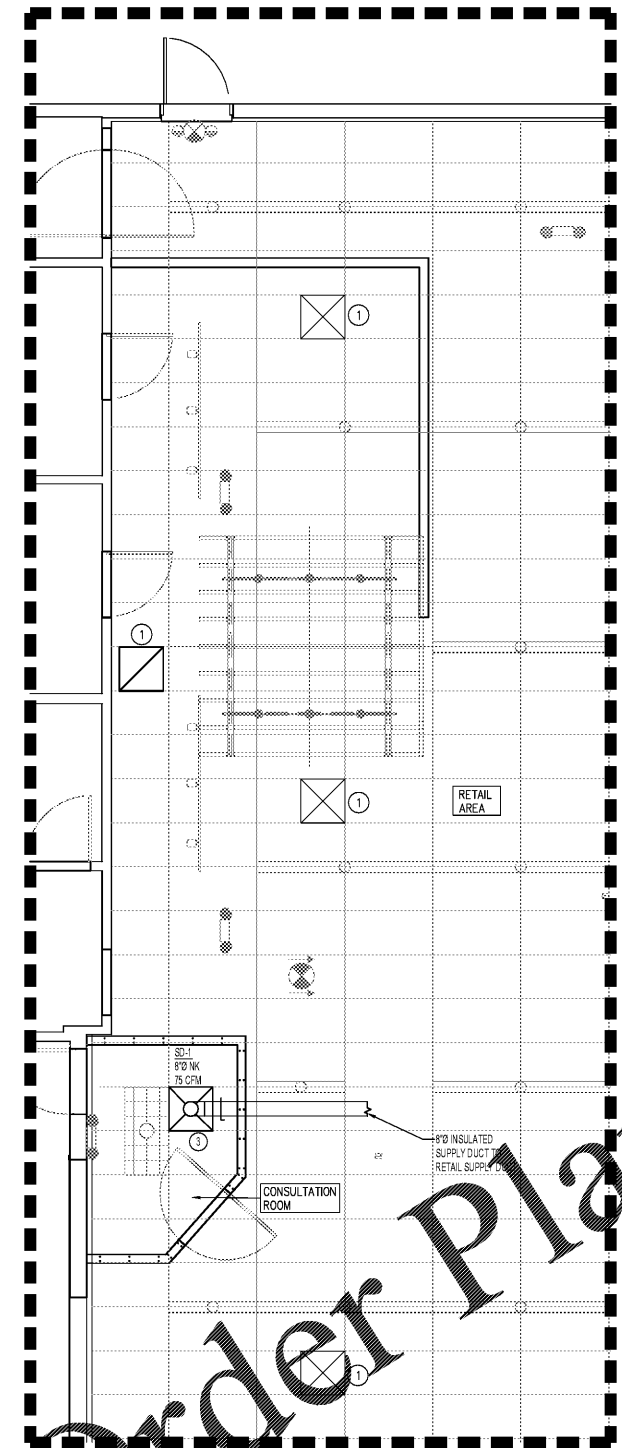


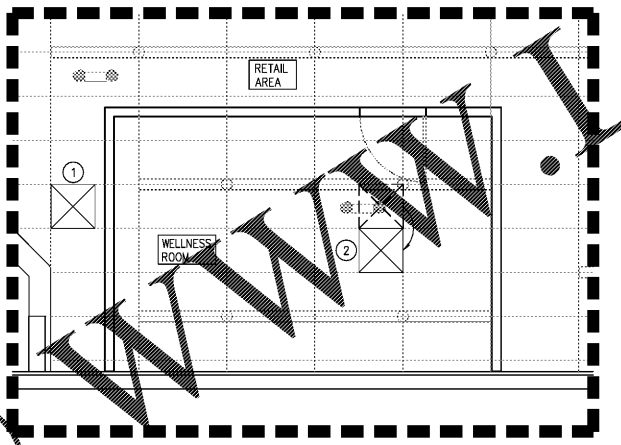
GRILLE, REGISTER, DIFFUSER SCHEDULE									
TAG	SERVICE	CFM	NECK SIZE	FRAME TYPE	PATTERN	DAMPER	MATERIAL	FINISH	MANUFACTURER & MODEL NO.
SR-1	SUPPLY	SEE PLANS	SEE PLANS	NOTE 1.2	4-WAY	YES	STEEL	OFF-WHITE	METALAIR 5700 SERIES

NOTE: 1. MODEL NUMBERS ARE METALAIR UNLESS OTHERWISE NOTED.
2. PROVIDE TRANSITION TO DIFFUSER WHERE REQUIRED.

- NOTES**
- GENERAL NOTES ARE APPLICABLE TO ALL HVAC DRAWINGS.
 - PERFORM WORK IN ACCORDANCE WITH THE LATEST EDITIONS, REVISIONS, AMENDMENTS, OR SUPPLEMENTS OF APPLICABLE STATUTES, ORDINANCES, CODES OR REGULATIONS OF FEDERAL, STATE, AND LOCAL AUTHORITIES HAVING JURISDICTION IN EFFECT ON THE DATE BIDS ARE RECEIVED.
 - WHERE APPROVED STANDARDS HAVE BEEN ESTABLISHED BY OSHA, UNDERWRITERS LABORATORIES, AMERICAN CODES, ASA, ASHRAE, ARI, NEC, STATE FIRE INSURANCE REGULATION BODY, NFPA OR OTHERS.
 - THESE STANDARDS SHALL BE FOLLOWED WHETHER OR NOT INDICATED ON THE DRAWING AND SPECIFICATIONS.
 - ALL DUCT TO BE OF 2" PRESSURE CLASS, UNLESS NOTED OTHERWISE.
 - LIGHT FIXTURE LOCATIONS TAKE PRECEDENCE OVER REGISTER AND GRILLE LOCATIONS. LOCATE DIFFUSERS AND GRILLES TO ACCOMMODATE LIGHTING LAYOUT.
 - DUCT SIZES SHOWN ARE FREE AREA.
 - DUCTWORK SHALL NOT BE SUPPORTED FROM CEILING. DO NOT USE FASTENERS THAT PENETRATE ROOF DECK.
 - REFER TO DETAIL 2/M-4 FOR DIFFUSER/GRILLE INSTALLATION.
 - CVS/PHARMACY HAS ENTERED INTO A NATIONAL ACCOUNT AGREEMENT WITH CPC FOR FURNISHING THE ENERGY MANAGEMENT SYSTEM SPECIFIED ON SHEET ES. FOR FURTHER INFORMATION, CALL CPC AT (800) 829-2724. AS PART OF THIS SYSTEM, TEMPORARY THERMOSTATS FOR THE ROOFTOP UNITS SHALL BE PROVIDED BY THE HVAC CONTRACTOR TO TEST AND BALANCE THE HVAC EQUIPMENT PRIOR TO FINAL INSTALLATION OF SENSORS. THE HVAC CONTRACTOR SHALL VERIFY TEMPORARY THERMOSTATS ARE MOUNTED AT LOCATIONS INDICATED.
 - THE DRAWINGS AND SPECIFICATIONS ARE PROVIDED REPRESENTATIVE WORK TO BE DONE IN ACCORDANCE WITH ALL APPLICABLE FEDERAL, STATE AND LOCAL CODES. LOCAL CODE AUTHORITY HAS THE AUTHORITY TO INTERPRET CODE REQUIREMENTS IN THEIR JURISDICTION. THESE INTERPRETATIONS MAY VARY FROM INFORMATION PRESENTED IN THE DOCUMENTS. THE CONTRACTOR SHALL INFORM THE OWNER'S REPRESENTATIVE AND THE ARCHITECT-ENGINEER, OF RECORD, OF THE DIFFERENCES AND SHALL PROCEED WITH THE WORK UPON RECEIVING THEIR AGREEMENT WITH THE LOCAL CODE AUTHORITY INTERPRETATION.
 - DESIGN COMPLIES WITH THE 2018 INTERNATIONAL MECHANICAL CODE WITH SC MODIFICATIONS.



PARIAL PLAN - HVAC RENOVATION PLAN
M-3
1/4"=1'-0"



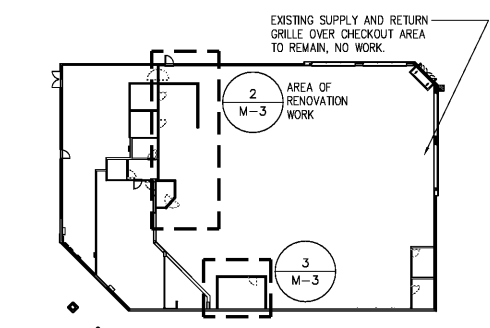
PARIAL PLAN - HVAC RENOVATION PLAN
M-3
1/4"=1'-0"

LEGEND

SYMBOL	NOTES BY SYMBOL
①	EXISTING SUPPLY/RETURN DIFFUSER TO REMAIN. NO WORK.
②	EXISTING SUPPLY AIR DIFFUSER TO BE RELOCATED. MOVE DIFFUSER TO NEW LOCATION. REPLACE EXISTING FLEX DUCT OF REQUIRED TO REACH THE NEW LOCATION. CHECK ALL FLEX DUCT CONNECTIONS AND SECURE AT EACH GRILLE AND AT THE MAIN TAP TO ENSURE NO GAPS AT THE CONNECTION.
③	NEW SUPPLY AIR DIFFUSER TO BE INSTALLED AS SHOWN. EXTEND NEW SUPPLY DUCTWORK TO EXISTING AIR HANDLING UNIT ASSOCIATED WITH THE RETAIL AREA OR EXISTING MAIN NEAREST DUCT BRANCH. NEW SUPPLY DUCTWORK SHALL BE INSULATED. COORDINATE WITH OTHER TRADES FOR ROUTING REQUIREMENTS.

CFM	NECK
CUBIC FEET PER MINUTE	AFF ABOVE FINISHED FLOOR
DN. DOWN	REO'D REQUIRED
CD CONDENSATE DRAIN	DMPR DAMPER
SA SUPPLY AIR	SD SUPPLY AIR DIFFUSER
FD FIRE DAMPER	

- NOTES BY SYMBOL (EXISTING BUILDING)**
- EXISTING SUPPLY/RETURN DIFFUSER TO REMAIN. NO WORK.
 - EXISTING SUPPLY AIR DIFFUSER TO BE RELOCATED. MOVE DIFFUSER TO NEW LOCATION. REPLACE EXISTING FLEX DUCT OF REQUIRED TO REACH THE NEW LOCATION. CHECK ALL FLEX DUCT CONNECTIONS AND SECURE AT EACH GRILLE AND AT THE MAIN TAP TO ENSURE NO GAPS AT THE CONNECTION.
 - NEW SUPPLY AIR DIFFUSER TO BE INSTALLED AS SHOWN. EXTEND NEW SUPPLY DUCTWORK TO EXISTING AIR HANDLING UNIT ASSOCIATED WITH THE RETAIL AREA OR EXISTING MAIN NEAREST DUCT BRANCH. NEW SUPPLY DUCTWORK SHALL BE INSULATED. COORDINATE WITH OTHER TRADES FOR ROUTING REQUIREMENTS.



HVAC RENOVATION KEY PLAN
SCALE: NTS

Order Plans @ WWW.LDILLING.COM



HEALTH HUB/Rx CONSULTATION
STORE NUMBER: 4176

11 RIVER RIDGE DRIVE, DAKLEY PLAZA
ASHEVILLE, NC 28803
CAP CODE: 90

CS PROJECT NUMBER: 146740

ARCHITECT OF RECORD:



85 S. College St. Ste 800 Charlotte, NC 28207
T: 704.525.6350 F: 704.581.6700

www.littleonline.com

This drawing and the design shown are the property of Little Architectural Company. The reproduction, copying or otherwise of this drawing without their written consent is prohibited and any infringement will be subject to legal action.



DEVELOPER:



SEAL:



REVISIONS:

DRAWING BY: ZM

CVS PROJECT MANAGER: RJ

DATE: 11-02-2020

JOB NUMBER: 121-14217-08

TITLE: MECHANICAL PLANS AND NOTES

SHEET NUMBER:

M-3

COMMENTS: