

Architect:  
archSTUDIO7, PLLC  
301 N. MAIN STREET, SUITE 1201  
Winston-Salem, NC 27101  
Tel. 336.793.9600  
www.archstudio7.com  
Copyright Reserved

The Contractor shall verify and be responsible for all dimensions. DO NOT scale the drawing - any errors or omissions shall be reported to archSTUDIO7, PLLC without delay. The Copyright to all designs and drawings are the property of archSTUDIO7, PLLC. Reproduction or use for any purpose other than that authorized by archSTUDIO7, PLLC is forbidden.

Consultants:



Permit - Seal:

PRELIMINARY  
NOT FOR CONSTRUCTION  
OR PRICING

NOT FOR  
CONSTRUCTION

Issued / Revisions: Appd. Date

Client:



Project:  
**Storage Facility**  
Country Club Rd.  
Winston-Salem, NC

Title:

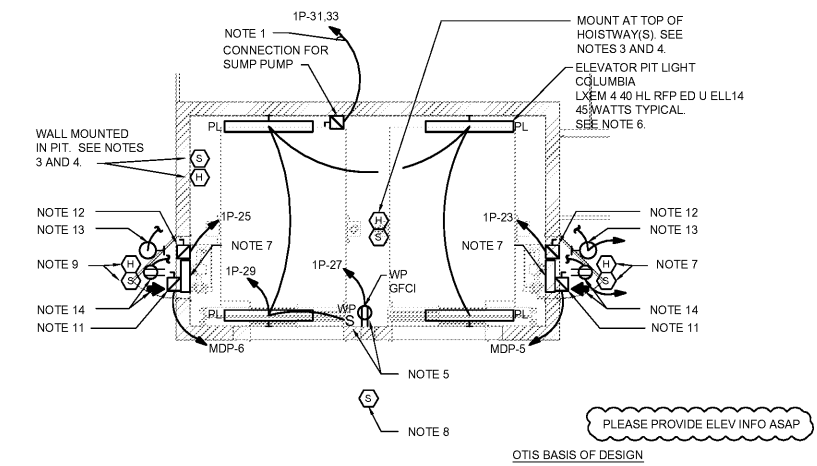
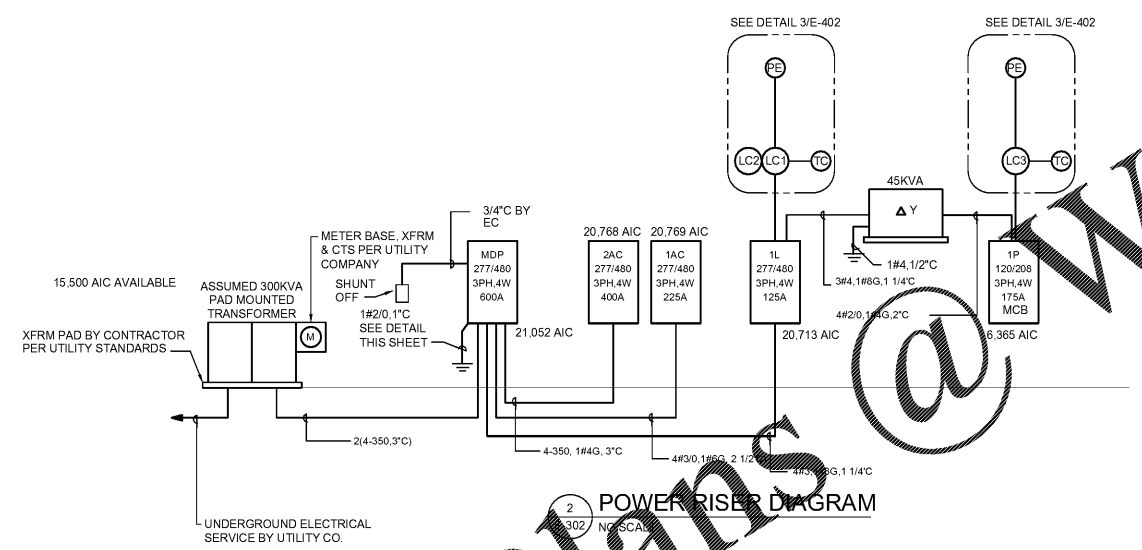
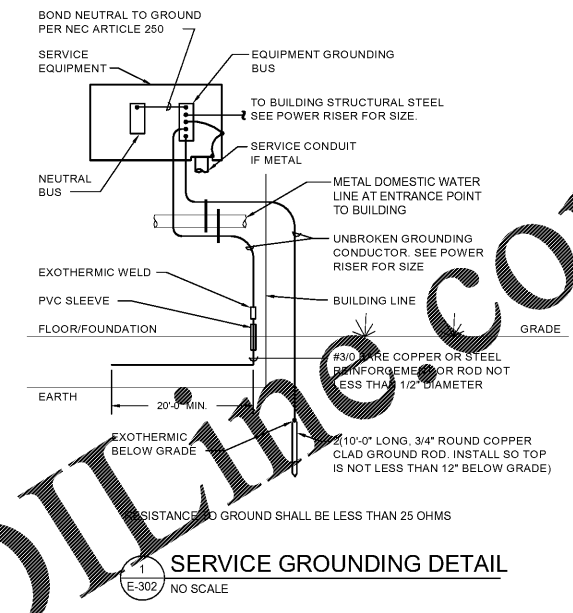
**ELECTRICAL  
DETAILS, RISERS,  
& PANELS**

Date:  
Project No.: Drawn by:  
Sheet:

E-302

PANELBOARD SCHEDULE - '2AC'																
MAIN: 225A MLO		VOLTAGE: 480/277			PHASE 3			WIRE 4			MOUNTING SURFACE			AIC: 22,000		NOTES:
CKT #	BKR TRIP	POLE	WIRE SIZE	COND SIZE	DESCRIPTION	LTG REC	MTR	AIC	HTG KIT	MISC	DESCRIPTION	COND SIZE	POLE	BKR TRIP	CKT #	
1					SPACE										2	
3					SPACE										4	
5					SPACE										6	
7															8	
9	15	3	12	1/2"	CU-1.1			2.8							10	
11								2.8							12	
13								2.8							14	
15	15	3	12	1/2"	CU-1.3			2.8							16	
17								2.8							18	
19								2.8							20	
21	15	3	12	1/2"	CU-2.1			2.8							22	
23								2.8							24	
25								2.8							26	
27	15	3	12	1/2"	CU-2.3			2.8							28	
29								2.8							30	
31								2.8							32	
33	15	3	12	1/2"	CU-3.1			2.8							34	
35								2.8							36	
37								2.8							38	
39	15	3	12	1/2"	CU-3.3			2.8							40	
41								2.8							42	
LIGHTING (KVA):						0.0	0.0	0.0	0.0	0.0	0.0	0.0	0.0	0.0	0.0	102.6
RECEPTACLES (KVA):						0.0										102.6
MOTORS (KVA):						0.0										
A/C (KVA):						102.6										
HEATING (KVA):						0.0										
KITCHEN (KVA):						0.0										
MISCELLANEOUS (KVA):						0.0										
NOTES: BASIS OF DESIGN BASED ON SQUARE D EQUIPMENT.																

PNL '2AC' DEMAND CALCS				
LIGHTING	0.00	KVA	X 125 %	= 0.0 KVA
RECEPTACLES TOTAL	0.00	KVA	X 100 %	= 0.0 KVA
1ST	10.00	KVA	X 100 %	= 0.0 KVA
REMAIN	0.00	KVA	X 50 %	= 0.0 KVA
MOTORS	0.00	KVA	X 100 %	= 0.0 KVA
A/C	102.58	KVA	X 100 %	= 102.6 KVA
HEATING	0.00	KVA	X 100 %	= 0.0 KVA
LOCKED-OUT LOAD	0.00	KVA	X 100 %	= 0.0 KVA
KITCHEN	0.00	KVA	X 65 %	= 0.0 KVA
MISCELLANEOUS	0.00	KVA	X 100 %	= 0.0 KVA
TOTAL	=	123.4	amps	= 102.6 KVA



Order Plans

- NOTES:
- CONNECTION TO ELEVATOR SUMP PUMP. SINGLE SHAFT DEDICATED 20A-1POLE GFI BREAKER FOR 3/4HP PUMP. DOUBLE CAB ELEVATOR SHAFT SHALL PROVIDE 208V-1Ø, 3ØA DISCONNECT ON 25A CIRCUIT. SEE PLANS FOR EXACT CIRCUIT DESIGNATION. COORDINATE WITH PLUMBING DRAWINGS.
  - COORDINATE EXACT LOCATION OF ALL DEVICES WITH THE ELEVATOR SHOP DRAWINGS.
  - MOUNT SMOKE AND HEAT DETECTORS WITHIN 2'-0" OF SPRINKLER HEADS. SMOKE DETECTORS SHALL, UPON ALARM, RECALL ELEVATOR TO THE APPROPRIATE LEVEL, AND LOCK OUT ELEVATOR VIA ELEVATOR EQUIPMENT. HEAT DETECTORS SHALL CONTROL MAIN ELEVATOR POWER. SEE ELEVATOR FIRE ALARM SHUTDOWN CONTROL SCHEMATIC. HEAT DETECTORS SHALL HAVE A LOWER RESPONSE TIME INDEX (135°F) COMPARED TO THE SPRINKLER HEADS IN THE HOISTWAY.
  - WHERE HOISTWAY IS NOT SPRINKLERED, DO NOT PROVIDE SMOKE OR HEAT DETECTORS IN THE HOISTWAY.
  - LOCATE LIGHT SWITCH AND CONVENIENCE RECEPTACLE ADJACENT TO ACCESS DOOR AND/OR ACCESS LADDER. RECEPTACLE AND LIGHTING SHALL BE ON SEPARATE CIRCUITS PER NEC 620.29. PROVIDE LIGHTING AND RECEPTACLE AT TOP OF ELEVATOR SHAFT THAT MATCHES WHAT IS INDICATED AT THE PIT. CONNECT RESPECTIVE CIRCUIT WITHIN THE SHAFT.
  - FIELD COORDINATE MOUNTING IN EQUIPMENT AREA.
  - PROVIDE SHORT-CIRCUIT CURRENT RATING ON ELEVATOR CONTROLLER PER NEC 620.16.
  - MOUNT IN ELEVATOR LOBBY AT EACH LEVEL WITHIN 15'-0" OF DOOR.
  - THE SMOKE DETECTOR(S) LOCATED IN THE DESIGNATED ELEVATOR RECALL LOBBY(S) SHALL ACTUATE THE FIRST ELEVATOR CONTROL CIRCUIT. THE SMOKE DETECTORS IN THE REMAINING ELEVATOR LOBBIES SHALL ACTUATE THE SECOND ELEVATOR CONTROL CIRCUIT. THE SMOKE DETECTORS IN THE HOISTWAY(S) AND ELEVATOR MACHINE ROOM(S) SHALL ACTUATE THE THIRD ELEVATOR CONTROL CIRCUIT, AND WHERE A MACHINE ROOM IS LOCATED AT THE DESIGNATED LEVEL THAT ELEVATOR MACHINE ROOM SMOKE DETECTOR SHALL ALSO ACTUATE THE FIRST ELEVATOR CONTROL CIRCUIT.
  - THIS PLAN IS DIAGRAMMATIC ONLY. ALL COMPONENTS SHALL BE THOROUGHLY COORDINATED WITH ELEVATOR EQUIPMENT VENDOR/INSTALLER AND ALL TRADES PRIOR TO BID, ROUGH-IN, & CONSTRUCTION.
  - THE CONTRACTOR SHALL COORDINATE AND PROVIDE SHUNTED CONNECTION TO MAIN ELEVATOR CONTROLLER AS REQUIRED PER JOB SPECIFIC ELEVATOR SHOP DRAWING. 200A-3P DISCONNECT FUSED PER MANUFACTURE ALLOCATED FOR BASIS OF DESIGN. DISCONNECT TYPE SHALL BE LOCKABLE OPEN IN ACCORDANCE WITH 110.25. THE DISCONNECTING MEANS SHALL BE A LISTED DEVICE. COMPLY WITH ARTICLE 620.51(A) FOR DISCONNECT TYPE. THE CONTRACTOR SHALL COORDINATE INSTALLATION WITH SELECTED MANUFACTURE'S SHOP DRAWINGS PRIOR TO ROUGH-IN. LOCATION OF DISCONNECT SHALL BE IN COMPLIANCE WITH NEC ARTICLE 620.51(C)(1) OR 620.51(C)(2).
  - THE CONTRACTOR SHALL COORDINATE AND PROVIDE 120V, 1Ø CONNECTION VIA LOCKABLE OPEN DISCONNECT FOR ELEVATOR CAB LIGHTS IN ACCORDANCE WITH NEC 620.53. COORDINATE LOCATION WITH JOB SPECIFIC ELEVATOR SHOP DRAWINGS PRIOR TO ANY ROUGH-IN WORK. LOCATE DISCONNECT PER NEC 620.53.
  - LEVITON CLOSET LIGHT 9864-LED OR EQUAL. MOUNTED ABOVE EQUIPMENT. DEDICATED CIRCUIT FOR LIGHTING. REQUIRE A DISCONNECT THAT IS LOCKABLE OPEN PER NEC 620.55. CAN PROVIDE A LOCKABLE DEVICE ON THE CIRCUIT BREAKER.
  - 120V GFCI EQUIPMENT ROOM RECEPTACLE AND TELECOMMUNICATIONS FOR ELEVATOR. DEDICATED CIRCUIT FOR POWER. REQUIRE A DISCONNECT THAT IS LOCKABLE OPEN PER NEC 620.55. CAN PROVIDE A LOCKABLE DEVICE ON THE CIRCUIT BREAKER.