

Architect:
archSTUDIO7, PLLC
301 N. MAIN STREET, SUITE 1201
Winston-Salem, NC 27101
Tel. 336.793.9600
www.archstudio7.com
Copyright Reserved

The Contractor shall verify and be responsible for all dimensions. DO NOT scale the drawing - any errors or omissions shall be reported to archSTUDIO7, PLLC without delay. The Copyrights to all designs and drawings are the property of archSTUDIO7, PLLC. Reproduction or use for any purpose other than that authorized by archSTUDIO7, PLLC is forbidden.

Consultants:



WAVE ENGINEERING
1300 E. MAIN ST. SUITE 110
CHARLOTTE, NC 28203
810.236.7728
INFO@WAVEENGINEERING.COM
NC CORP. LICENSE #B-1821
WAVE PROJECT #20152

Permit - Seal:

PRELIMINARY
NOT FOR CONSTRUCTION
OR PRICING

10/30/2020

NOT FOR
CONSTRUCTION

Issued / Revisions:	Appd.	Date

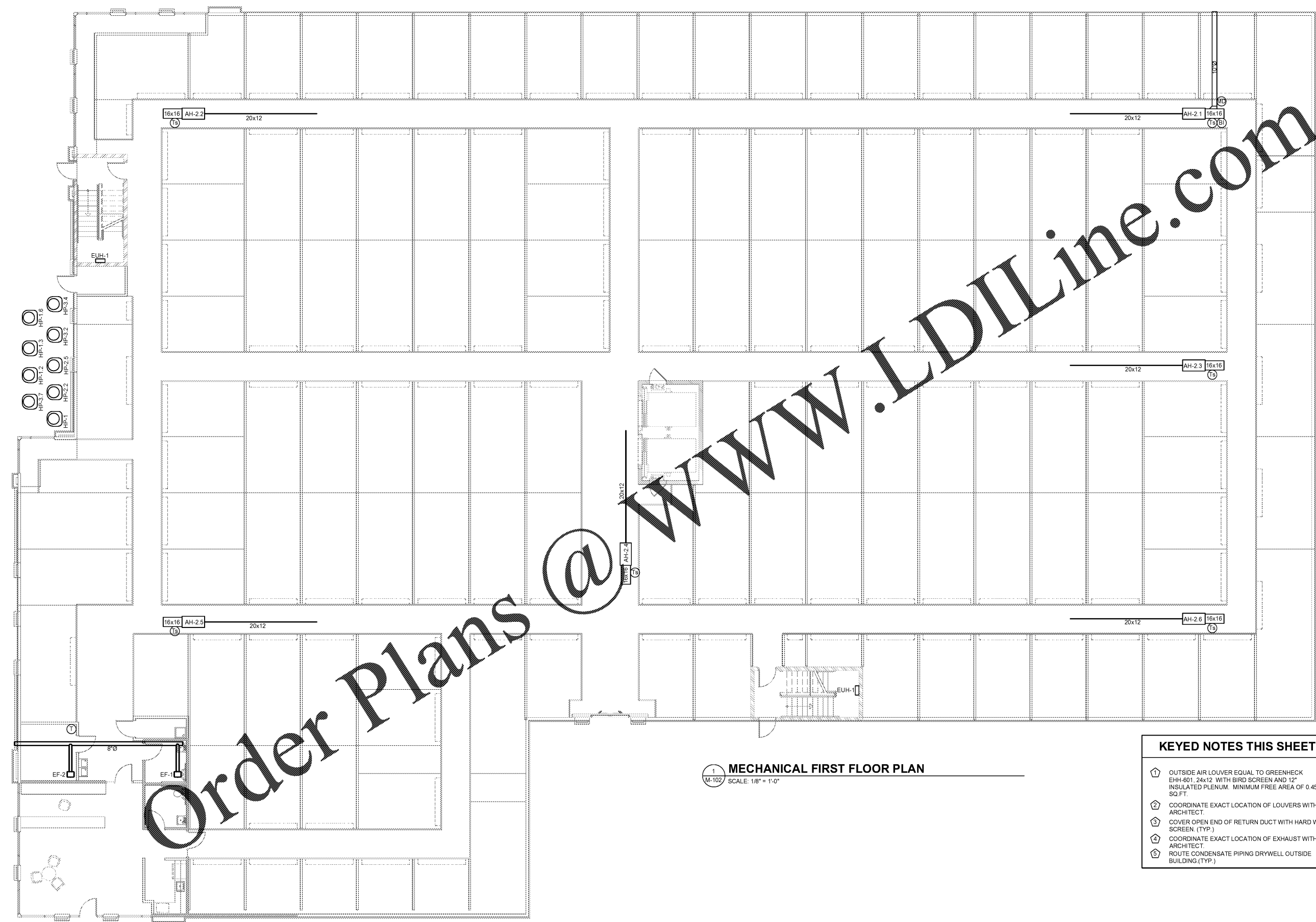


Client:
Storage Facility
Country Club Rd.
Winston-Salem, NC

Title:
MECHANICAL FIRST FLOOR PLAN

Date:
Project No.:
Drawn by:
Sheet:

M-102



1 MECHANICAL FIRST FLOOR PLAN
M-102 SCALE: 1/8" = 1'-0"

- KEYED NOTES THIS SHEET**
- ① OUTSIDE AIR LOUVER EQUAL TO GREENHECK EHH-601, 24x12 WITH BIRD SCREEN AND 12" INSULATED PLENUM. MINIMUM FREE AREA OF 0.45 SQ.FT.
 - ② COORDINATE EXACT LOCATION OF LOUVERS WITH ARCHITECT.
 - ③ COVER OPEN END OF RETURN DUCT WITH HARD WIRE SCREEN. (TYP.)
 - ④ COORDINATE EXACT LOCATION OF EXHAUST WITH ARCHITECT.
 - ⑤ ROUTE CONDENSATE PIPING DRYWELL OUTSIDE BUILDING. (TYP.)

Order Plans @ www.LDILine.com