

The Contractor shall verify and be responsible for all dimensions. DO NOT scale the drawing - any errors or omissions shall be reported to archSTUDIO7, PLLC without delay. The Copyrights to all designs and drawings are the property of archSTUDIO7, PLLC. Reproduction or use for any purpose other than that authorized by archSTUDIO7, PLLC is prohibited.

Consultants:
Structural:
Jerry W. Moorefield PE
University Commercial Center
7990 North Point Boulevard
Winston-Salem, NC 27106
Ph. 336.593.9623

Permit - Seal:

NOT FOR CONSTRUCTION

| | |
|---------------------|------------|
| PRICING SET | 11-2-20 |
| Issued / Revisions: | Appd. Date |



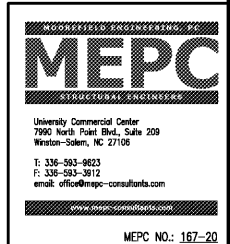
Client:
Project:
Storage Facility
Country Club Rd.
Winston-Salem, NC

Title:

ROOF FRAMING PLAN

Date: 11-2-2020
Project No.: 720-016
Drawn by: MRM

Sheet:
S4



PROGRESS DRAWING NOT FOR CONSTRUCTION

NOTE B: 6x6x $\frac{3}{8}$ LEDGER ANGLE @ PERIMETER OF STAIR/ELEVATOR SHAFT - SECURE TO BOND BEAM @ W/ $\frac{3}{4}$ "x4" EMBEDMENT EXP. BOLTS @ 32" O.C. MAX. SPACING - TYPICAL THIS SYMBOL

ALL PARAPET FRAMING TO BE DESIGNED BY THE BUILDING SUPPLIER - TYPICAL

COORD. W/ ELEVATOR EQUIP. DWGS.

NOTE B

$\frac{3}{8}$ "x6"x8" LONG BRG. PLATE W/ 2- $\frac{3}{4}$ "x6"x8" LONG HEADED STUDS - TYPICAL

NOTE B

NOTE B

NOTE B

NOTE B

NOTE B

NOTE B

NOTE B

NOTE B

NOTE B

NOTE B

NOTE B

NOTE B

NOTE B

NOTE B

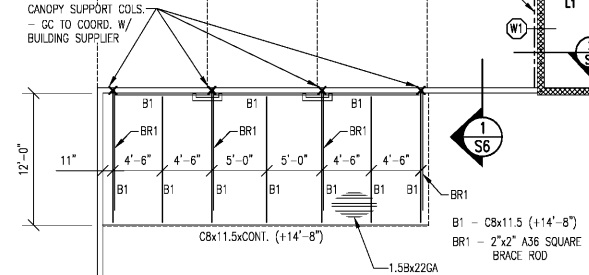
NOTE B

NOTE B

NOTE B

NOTE B

NOTE B



| MARK | SIZE | SUPPORT CONDITION |
|------|-------------------------|---------------------|
| L1 | 8"x8" CMU W/ 2-#5 BARS | 8" MIN. CMU EA. END |
| L2 | 8"x16" CMU W/ 4-#5 BARS | 8" MIN. CMU EA. END |

NOTE 1: GC TO COORDINATE ALL OPENINGS W/ ARCHITECTURAL PLANS.
NOTE 2: GC TO COORDINATE W/ ARCH/MASON CONTRACTOR/ELEVATOR MANUFACTURER FOR THE FINAL LOCATION OF OPNS. @ THE ELEVATOR SHAFT WALLS.

ROOF FRAMING PLAN

SCALE: $\frac{1}{8}$ " = 1'-0"

WALL REINFORCEMENT SCHEDULE

- (W1) 8" CMU W/ #7 BARS VERTICAL @ 8" O.C. MAX. SPACING W/ 14" HOOK ON VERTICAL BARS INTO FOOTING - GROUT FILL WALL SOLID - PROVIDE CONT. BOND BEAM TYPE & @ ELEV. INDICATED IN BOND BEAM SCHEDULE - USE CF2 FOOTING TYPICAL @ THIS WALL TYPE: U.N.O.
- (W2) 8" CMU W/ #7 BARS VERTICAL @ 8" O.C. MAX. SPACING W/ 14" HOOK ON VERTICAL BARS INTO ELEVATOR END. - GROUT FILL WALL SOLID - PROVIDE CONT. BOND BEAM TYPE & @ ELEV. INDICATED IN BOND BEAM SCHEDULE.
- (W3) 8" CMU W/ #7 BARS VERTICAL @ 24" O.C. MAX. SPACING - EXTEND BARS 48" INTO INTO POURED WALL - GROUT FILL CELLS W/ REINF. - PROVIDE CONT. BOND BEAM TYPE & @ ELEV. INDICATED IN BOND BEAM SCHEDULE.

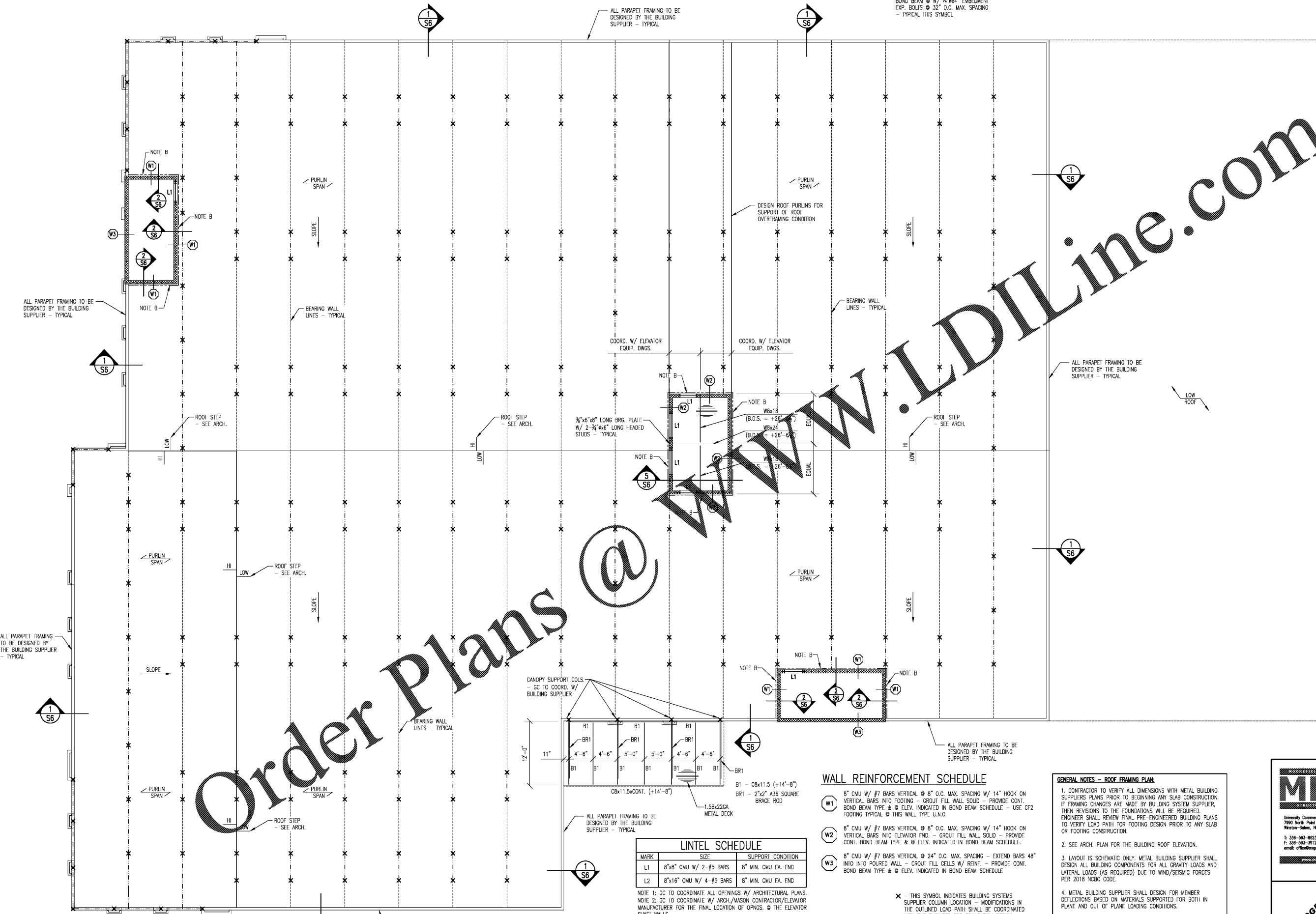
× - THIS SYMBOL INDICATES BUILDING SYSTEMS SUPPLIER COLUMN LOCATION - MODIFICATIONS IN THE OUTLINED LOAD PATH SHALL BE COORDINATED WITH THE ENGINEER FOR FOUNDATION DESIGN ADJUSTMENTS AS REQUIRED.

----- - THIS SYMBOL INDICATES BUILDING SYSTEMS SUPPLIER BEAM LOCATION - MODIFICATIONS IN THE OUTLINED LOAD PATH SHALL BE COORDINATED WITH THE ENGINEER FOR FOUNDATION DESIGN ADJUSTMENTS AS REQUIRED.

GENERAL NOTES - ROOF FRAMING PLAN:

1. CONTRACTOR TO VERIFY ALL DIMENSIONS WITH METAL BUILDING SUPPLIER'S PLANS PRIOR TO BEGINNING ANY SLAB CONSTRUCTION. IF CHANGES ARE MADE BY BUILDING SYSTEM SUPPLIER, THEN REVISIONS TO THE FOUNDATIONS WILL BE REQUIRED. ENGINEER SHALL REVIEW FINAL PRE-ENGINEERED BUILDING PLANS TO VERIFY LOAD PATH FOR FOOTING DESIGN PRIOR TO ANY SLAB OR FOOTING CONSTRUCTION.
2. SEE ARCH. PLAN FOR THE BUILDING ROOF ELEVATION.
3. LAYOUT IS SCHEMATIC ONLY. METAL BUILDING SUPPLIER SHALL DESIGN ALL BUILDING COMPONENTS FOR ALL GRAVITY LOADS AND LATERAL LOADS (AS REQUIRED) DUE TO WIND/SEISMIC FORCES PER 2018 NCBC CODE.
4. METAL BUILDING SUPPLIER SHALL DESIGN FOR MEMBER DEFLECTIONS BASED ON MATERIALS SUPPORTED FOR BOTH IN PLANE AND OUT OF PLANE LOADING CONDITIONS.
5. METAL BUILDING SUPPLIER TO PROVIDE SUPPORT FOR ALL BUILDING MOUNTED SIGNS - COORDINATE LOCATIONS W/ ARCH/GC

NOTE: CMU WALLS @ STAIR SHAFTS AND ELEVATOR SHAFT HAVE BEEN UTILIZED AS SHEARWALLS IN THE X & Y DIRECTION.



| SIZE | TOP OF BOND BEAM ELEVATION |
|---|----------------------------|
| 8"x16" CONT. CMU BOND BEAM W/ 2-#5 BARS CONT. T&B | 0'-0" +11'-0" A.F.F.E. |

Order Plans @

WWW.LDILine.com