

The Contractor shall verify and be responsible for all dimensions. DO NOT scale the drawing - any errors or omissions shall be reported to archSTUDIO7, PLLC without delay. The Copyrights to all designs and drawings are the property of archSTUDIO7, PLLC. Reproduction or use for any purpose other than that authorized by archSTUDIO7, PLLC is prohibited.

Consultants :

Structural:
Jerry W. Moorefield PE
University Commercial Center
7990 North Point Boulevard
Winston-Salem, NC 27106
Ph. 336.593.9623

Permit - Seal :

NOT FOR CONSTRUCTION

PRICING SET	11-2-20
Issued / Revisions :	Appd. Date

Client :



Project :
Storage Facility
Country Club Rd.
Winston-Salem, NC

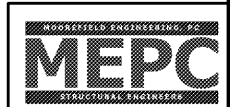
Title :

2ND LEVEL FLOOR/LOW ROOF FRAMING PLAN

Date : 11-2-2020

Project No. : 720-016 | Drawn by : MRM

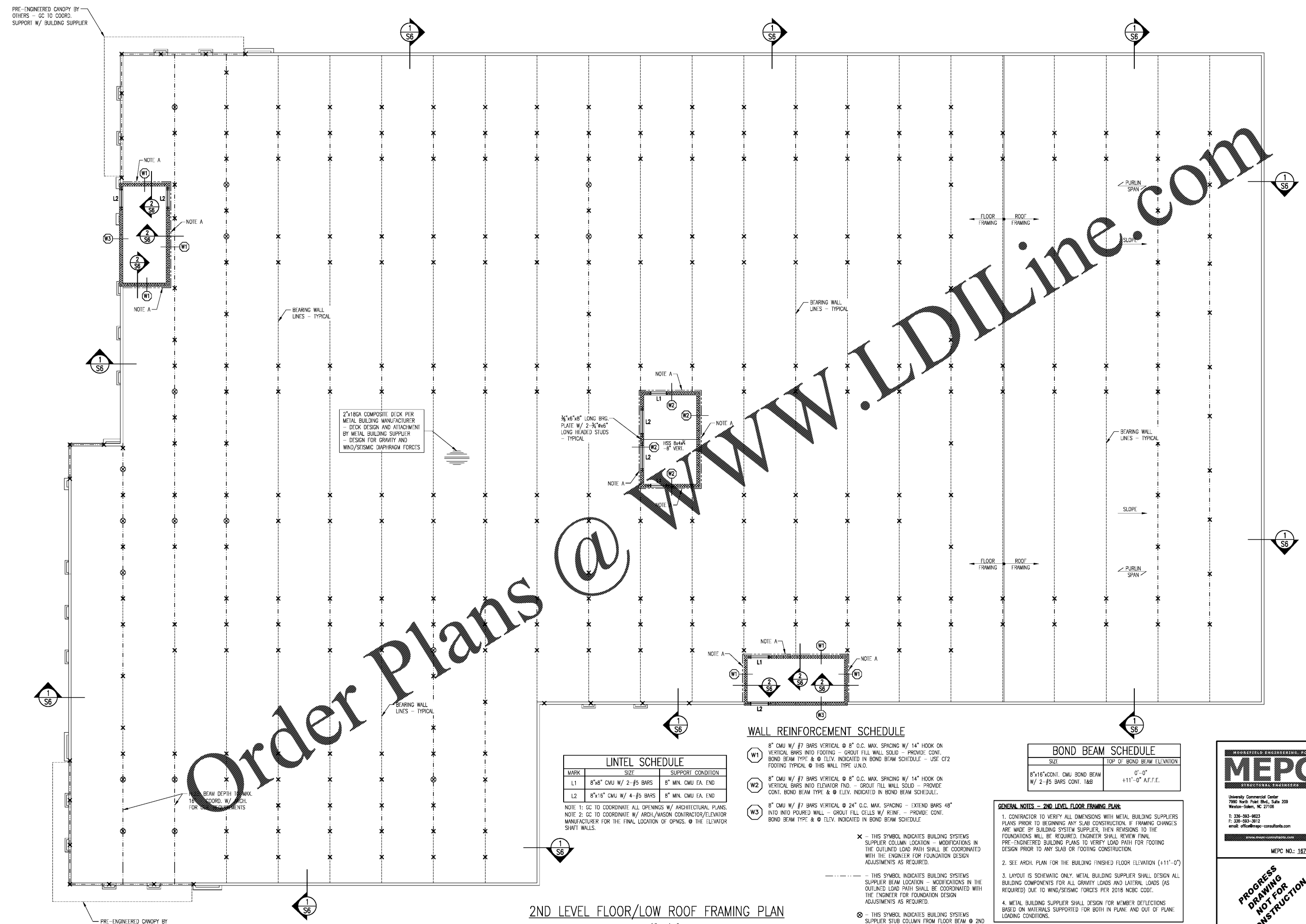
Sheet : S3



MEPC
University Commercial Center
7990 North Point Blvd., Suite 209
Winston-Salem, NC 27106
T: 336-593-9623
F: 336-593-9612
email: office@mepc-consultants.com
www.mepec-consultants.com
MEPC No.: 167-20

PROGRESS DRAWING NOT FOR CONSTRUCTION

FIRM REGISTRATION NO.: C-1323



LINTEL SCHEDULE

MARK	SIZE	SUPPORT CONDITION
L1	8"x8" CMU W/ 2-#5 BARS	8" MIN. CMU EA. END
L2	8"x16" CMU W/ 4-#5 BARS	8" MIN. CMU EA. END

NOTE 1: GC TO COORDINATE ALL OPENINGS W/ ARCHITECTURAL PLANS.
NOTE 2: GC TO COORDINATE W/ ARCH./MASON CONTRACTOR/ELEVATOR MANUFACTURER FOR THE FINAL LOCATION OF OPNGS. @ THE ELEVATOR SHAFT WALLS.

WALL REINFORCEMENT SCHEDULE

- W1 8" CMU W/ #7 BARS VERTICAL @ 8" O.C. MAX. SPACING W/ 14" HOOK ON VERTICAL BARS INTO FOOTING - GROUT FILL WALL SOLID - PROVIDE CONT. BOND BEAM TYPE & @ ELEV. INDICATED IN BOND BEAM SCHEDULE - USE CF2 FOOTING TYPICAL @ THIS WALL TYPE U.N.O.
- W2 8" CMU W/ #7 BARS VERTICAL @ 8" O.C. MAX. SPACING W/ 14" HOOK ON VERTICAL BARS INTO ELEVATOR FND. - GROUT FILL WALL SOLID - PROVIDE CONT. BOND BEAM TYPE & @ ELEV. INDICATED IN BOND BEAM SCHEDULE.
- W3 8" CMU W/ #7 BARS VERTICAL @ 24" O.C. MAX. SPACING - EXTEND BARS 48" INTO INTO POURED WALL - GROUT FILL CELLS W/ REINF. - PROVIDE CONT. BOND BEAM TYPE & @ ELEV. INDICATED IN BOND BEAM SCHEDULE.

- X - THIS SYMBOL INDICATES BUILDING SYSTEMS SUPPLIER COLUMN LOCATION - MODIFICATIONS IN THE OUTLINED LOAD PATH SHALL BE COORDINATED WITH THE ENGINEER FOR FOUNDATION DESIGN ADJUSTMENTS AS REQUIRED.
- --- --- THIS SYMBOL INDICATES BUILDING SYSTEMS SUPPLIER BEAM LOCATION - MODIFICATIONS IN THE OUTLINED LOAD PATH SHALL BE COORDINATED WITH THE ENGINEER FOR FOUNDATION DESIGN ADJUSTMENTS AS REQUIRED.
- ⊗ - THIS SYMBOL INDICATES BUILDING SYSTEMS SUPPLIER STUB COLUMN FROM FLOOR BEAM @ 2ND LEVEL - MODIFICATIONS IN THE OUTLINED LOAD PATH SHALL BE COORDINATED WITH THE ENGINEER FOR FOUNDATION DESIGN ADJUSTMENTS AS REQUIRED.

BOND BEAM SCHEDULE

SIZE	TOP OF BOND BEAM ELEVATION
8"x16"CONT. CMU BOND BEAM W/ 2-#5 BARS CONT. 1&B	0'-0" +11'-0" A.F.F.E.

GENERAL NOTES - 2ND LEVEL FLOOR FRAMING PLAN:

1. CONTRACTOR TO VERIFY ALL DIMENSIONS WITH METAL BUILDING SUPPLIERS PLANS PRIOR TO BEGINNING ANY SLAB CONSTRUCTION. IF FRAMING CHANGES ARE MADE BY BUILDING SYSTEM SUPPLIER, THEN REVISIONS TO THE FOUNDATIONS WILL BE REQUIRED. ENGINEER SHALL REVIEW FINAL PRE-ENGINEERED BUILDING PLANS TO VERIFY LOAD PATH FOR FOOTING DESIGN PRIOR TO ANY SLAB OR FOOTING CONSTRUCTION.
2. SEE ARCH. PLAN FOR THE BUILDING FINISHED FLOOR ELEVATION (+11'-0")
3. LAYOUT IS SCHEMATIC ONLY. METAL BUILDING SUPPLIER SHALL DESIGN ALL BUILDING COMPONENTS FOR ALL GRAVITY LOADS AND LATERAL LOADS (AS REQUIRED) DUE TO WIND/SEISMIC FORCES PER 2018 NBC CODE.
4. METAL BUILDING SUPPLIER SHALL DESIGN FOR MEMBER DEFLECTIONS BASED ON MATERIALS SUPPORTED FOR BOTH IN PLANE AND OUT OF PLANE LOADING CONDITIONS.

NOTE: CMU WALLS @ STAIR SHAFTS AND ELEVATOR SHAFT HAVE BEEN UTILIZED AS SHEAR WALLS IN THE Vx & Vy DIRECTION.

2ND LEVEL FLOOR/LOW ROOF FRAMING PLAN

SCALE: 1/8" = 1'-0"

Order Plans @

WWW.LDILine.com

PRE-ENGINEERED CANOPY BY OTHERS - GC TO COORD. SUPPORT W/ BUILDING SUPPLIER

NOTE A

NOTE A

1/S6

BEARING WALL LINES - TYPICAL

2"x18GA COMPOSITE DECK PER METAL BUILDING MANUFACTURER - DECK DESIGN AND ATTACHMENT BY METAL BUILDING SUPPLIER - DESIGN FOR GRAVITY AND WIND/SEISMIC DIAPHRAGM FORCES

NOTE A

3/8"x6"x8" LONG BRG. PLATE W/ 2-3/4"x6" LONG HEADED STUDS - TYPICAL

NOTE A

NOTE A

NOTE A

NOTE A

NOTE A

NOTE A

NOTE A

NOTE A

NOTE A

NOTE A

NOTE A

NOTE A

NOTE A

NOTE A

NOTE A

NOTE A

NOTE A

NOTE A

NOTE A

NOTE A

NOTE A

NOTE A

NOTE A

NOTE A

BEAM DEPTH TO MAX. TO COORD. W/ CH. FOR CONNECTIONS

PRE-ENGINEERED CANOPY BY OTHERS - GC TO COORD. SUPPORT W/ BUILDING SUPPLIER