

Order Plans @ WWW.LDLINE.COM

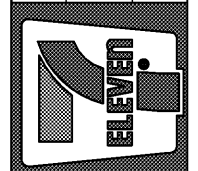
KEY NOTES

- 1 ELECTRICAL CONDUIT(S) TO ENTER SUMP 2" MIN ABOVE HIGHEST PRODUCT PENETRATION.
- 2 LOCATE ELECTRICAL JUNCTION BOX IN UPWARD POSITION AT HIGHEST LOCATION IN SUMP RISER FOR EASY ACCESS FROM ABOVE.
- 3 SUMP SENSOR TO REST AT LOWEST POINT OF SUMP ENCLOSURE ON PRODUCT PIPING SIDE OF SUMP. TANK CONTRACTOR TO SUPPLY ALL BRACKETS AND CLAMPS FOR 2-POINT MOUNTING OF THE 2" FRP SLEEVE.
- 4 SET MANHOLE COVERS 1" ABOVE THE FINISH GRADE AND SLOPE CONCRETE AWAY FROM MANHOLE COVERS AT 2% GRADE.
- 5 POSITION BALL VALVE FOR UNOBSTRUCTED USE OF SHUT-OFF HANDLE.
- 6 STP POWER CONDUITS MUST BE RUN IN SEPARATE RACEWAY. ENTIRE WIRING RUN MUST BE IN RIGID PVC COATED GALVANIZED STEEL CONDUIT. USE ONLY ROB ROY CONDUIT TYPES "PERMA-COAT", "PLASTI-BOND" OR "KORKAP". NO PVC OR RNC CONDUIT ALLOWED.
- 7 USE ONLY ROB ROY CONDUIT TYPES "PERMA-COAT", "PLASTI-BOND" OR "KORKAP" ELECTRICAL CONDUITS AT FIBERGLASS TANK SUMPS OR WHERE BRAVO F-17-RR OR F-10-RR ENTRY FITTINGS ARE CALLED OUT.

Rev. #	Date	Description
1	10/23/20	FEED REVIEW COMMENTS

Proto 11-05-18

7-ELEVEN, INC.
3200 HACKBERRY ROAD, IRVING TEXAS 75063
7-ELEVEN #41635
1401 COVENTRY ROAD
MYRTLE BEACH, SC 29575
TANK SUMP DETAILS
DUAL OUTPUT

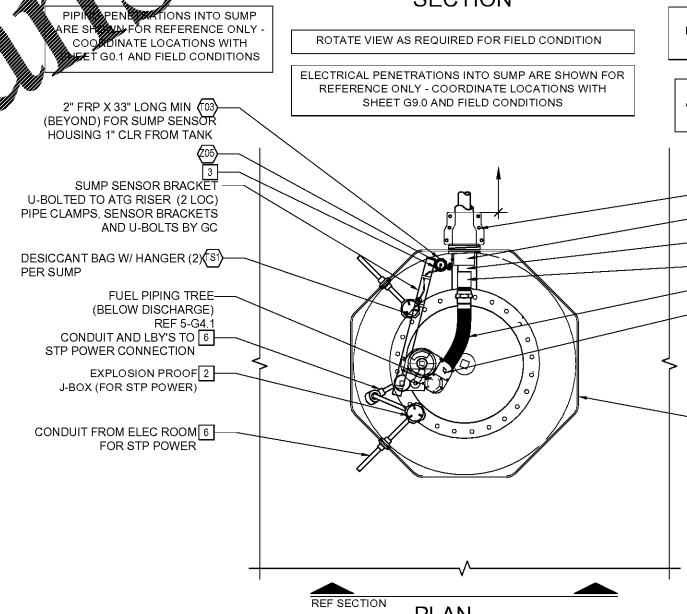
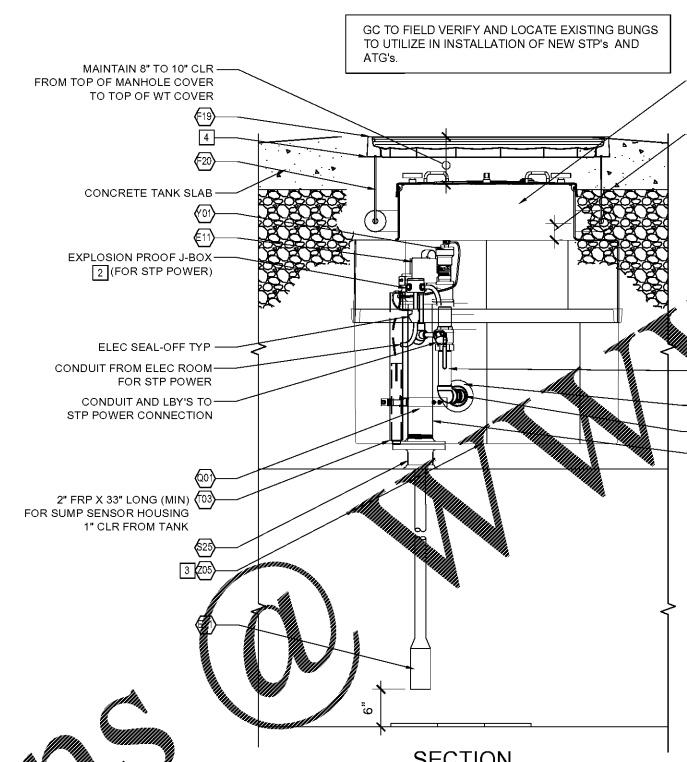


Job#:	SEI-29986
Scale:	AS NOTED
Date:	08/05/20
Drawn By:	LAA
Checked By:	KMS

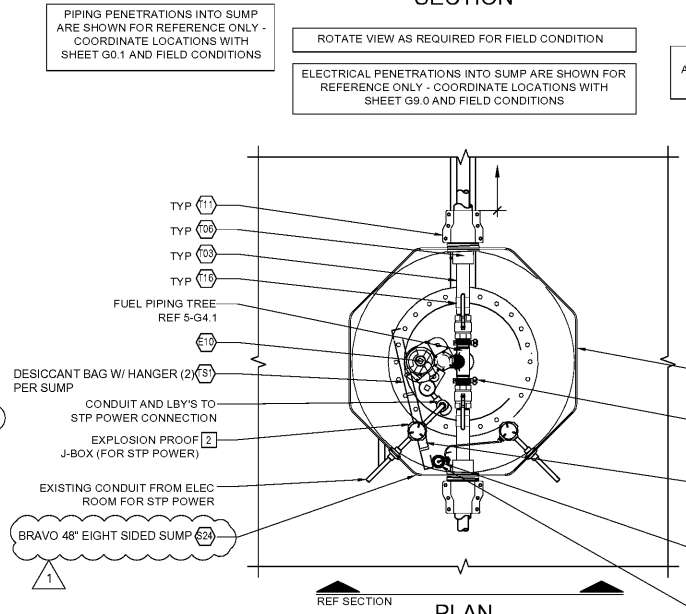
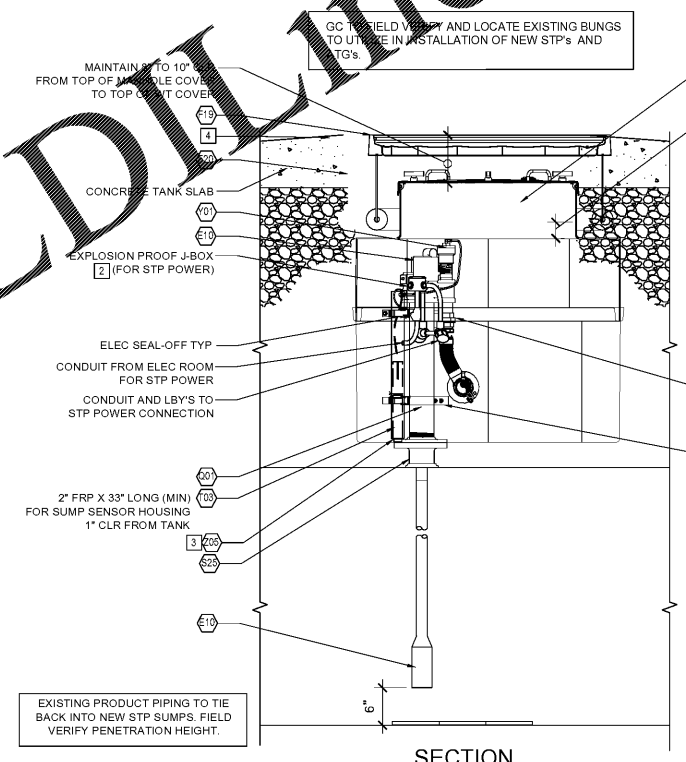
Documents prepared by Core States Group are to be used for the specific project for which they are intended. Any extension of use to other projects, by owner or otherwise, without the expressed, written consent of Core States Group is prohibited. Core States Group is not liable for any claims or damages resulting from the use of these drawings if the user has not specifically intended, user will hold Core States Group harmless from all claims and losses.



SHEET:
G4.0
FUELING - USA D/O



2 DIESEL STP SUMP DETAILS
3/4"=1'-0"



1 REGULAR AND PREMIUM STP SUMP DETAILS
3/4"=1'-0"