



7-ELEVEN

EXISTING STORE W/ FUELING REMODEL

STORE NO. 41635

1401 COVENTRY RD

MYRTLE BEACH, SC 29575

SHEET INDEX

Description	Date	Rev. #
FUELING CANOPY AND UNDERGROUND STORAGE TANKS		
G0.0 FUELING CANOPY COVER SHEET AND INDEX		REV 1
G0.1 FUELING ARCHITECTURAL SITE PLAN		
G0.3 DEMO PLAN		
G1.0 NOT USED		
G2.0 NOT USED		
G3.0 TANK SECTIONS		
G4.0 TANK SUMP DETAILS - DUAL OUTPUT		REV 1
G4.1 TANK SUMP DETAILS		
G5.0 DISPENSER AND SUMP DETAILS		REV 1
G6.0 NOT USED		
G6.1 FUELING DIMENSIONAL PLAN		
G7.0 EQUIPMENT SCHEDULES		
G7.1 EQUIPMENT SCHEDULES		REV 1
G8.0 NOT USED		
G8.1 NOT USED		
G9.0 UST ELECTRICAL PLAN, ONE-LINE DIAGRAM AND PANEL SCHEDULE		REV 1
G9.1 NOT USED		
G10.0 NOT USED		
G11.0 NOT USED		
G12.0 NOT USED		
G13.0 FUELING SPECIFICATIONS		
G14.0 FUELING SPECIFICATIONS		
G15.0 FUELING SPECIFICATIONS		
G16.0 FUELING SPECIFICATIONS		
G17.0 FUELING SPECIFICATIONS		

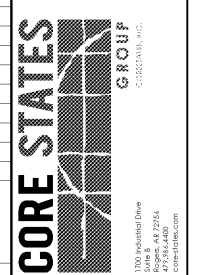
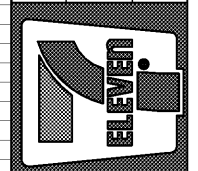
Date	Rev. #	Description
10/23/20	1	FEER REVIEW COMMENTS

Proto 11-05-18

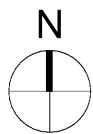
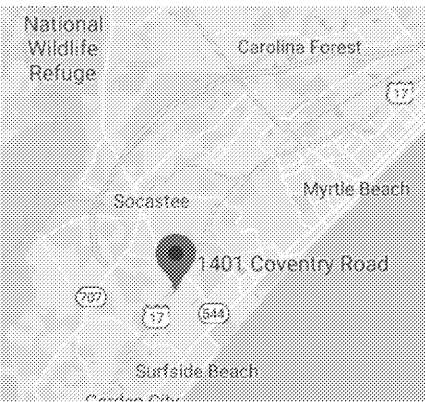
7-ELEVEN, INC.
3200 HACKBERRY ROAD, IRVING TEXAS 75063

7-ELEVEN #41635
1401 COVENTRY ROAD
MYRTLE BEACH, SC 29575

FUELING CANOPY COVER SHEET AND INDEX

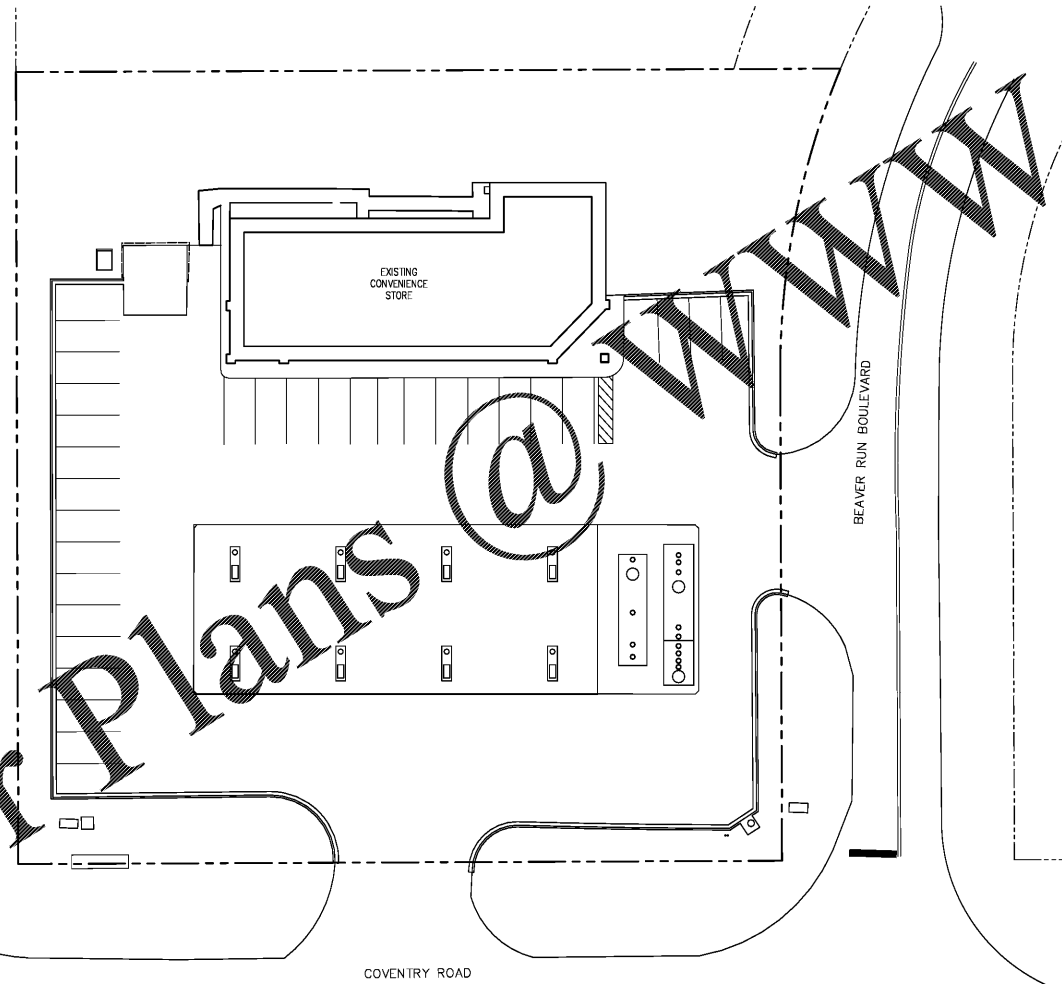
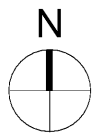
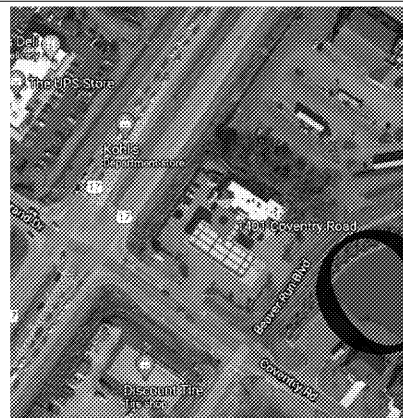


VICINITY MAP



US HIGHWAY 17 BYPASS

SITE LOCATION MAP



PROJECT DATA

BUILDING CODE: 2015 INTERNATIONAL BUILDING CODE
 MECHANICAL CODE: 2015 INTERNATIONAL MECHANICAL CODE
 PLUMBING CODE: 2015 INTERNATIONAL PLUMBING CODE
 ELECTRIC CODE: 2014 NEC
 FIRE CODE: 2015 INTERNATIONAL FIRE CODE

NFPA 30A FLAMMABLE AND COMBUSTIBLE LIQUIDS CODE-2015 EDITION
 NFPA 30A CODE FOR MOTOR FUEL DISPENSING FACILITIES AND REPAIR GARAGES-2015 EDITION
 NFPA 1 UNIFORM FIRE CODE HANDBOOK

SUMMARY OF WORK

- GRADING AND SITEWORK
- ASSOCIATED UNDERGROUND TANKS AND PIPING
- FUELING STATION DESCRIPTION:
 - (2) 2.0 hp VARIABLE SPEED STP FOR RUL AND PUL
 - (1) 11.5 hp FIXED SPEED STP FOR DIESEL
 - (3) PRODUCT FILL BUCKETS (1 EACH UST)
 - (8) NEW DISPENSER SUMPS
 - (3) STP SUMPS
 - NEW MANHOLES FOR ATG AND INTERSTITIAL
 - (6) EXISTING WAYNE OVATION 3+0 DISPENSER TO REMAIN
 - (2) EXISTING WAYNE OVATION 3+1 DISPENSERS TO REMAIN
 - (1) EXISTING 10" DIA. 20K GAL. SPLIT DW STEEL UST - 15K REGULAR/5K PREMIUM TO REMAIN (LIMITED TANK TOP REMODEL)
 - (1) EXISTING 8" DIA. 12K GAL. DW STEEL UST FOR DIESEL FUEL TO REMAIN (LIMITED TANK TOP REMODEL)
 - EXISTING EIGHT (8) DISPENSER CANOPY TO RECEIVE MODIFICATIONS.

PROJECT DIRECTORY

Rycon Construction, Inc.
Jessica Cisneros
jcisneros@ryconinc.com
Office: 770-771-0830

DEVIATIONS

- NON-PROTO 8 DISPENSER CANOPY
- NON-PROTO EXISTING TANKS TO REMAIN WITH LIMITED TANK TOP REPLACEMENT
- NON-PROTO EXISTING WAYNE OVATION DISPENSERS TO REMAIN WITH NEW DISPENSER SUMPS
- NON-PROTO EXISTING PRODUCT AND VENT PIPING TO REMAIN
- NON-PROTO EXISTING VENT STACK TO REMAIN
- NON-PROTO EXISTING AIR/VAC MACHINE TO REMAIN
- NON-PROTO NEW DISPENSER AND STP SUMP SENSORS

REFERENCE SYMBOLS

- NORTH ARROW
- HEIGHT ELEVATION INDICATOR
- DOOR TAG
- ENLARGED DETAIL INDICATOR
- GRID LINE INDICATOR
- WINDOW TAG
- WALL TAG
- XXXXXX - ROOM TAG
- xxx - REVISION DELTA
- x.x.x. - SPOT ELEVATION INDICATOR
- xx - KEY NOTE INDICATOR
- xx - FINISH INDICATOR
- x/xx.x - SECTION CUT INDICATOR
- xx.x x - ELEVATION INDICATOR
- xxx - EQUIPMENT TAG (FOR LIST REF G7.0)

Job#:	SEI-29986
Scale:	AS NOTED
Date:	08/05/20
Drawn By:	LAA
Checked By:	KMS

Documents prepared by Core States Group are to be used for the specific project for which they are intended. Any extension of use to other projects, by owner or contractor, without the expressed, written consent of Core States Group is done at the user's own risk. Core States Group is not liable for any errors or omissions in the drawings. Core States Group shall not be held responsible for any damages, claims and losses.



SHEET:
G0.0
 FUELING - USA

PRINTED BY: JATLUNG
DRAWING NAME: 41635 - G0.0 FUELING CANOPY COVER SHEET AND INDEX
PRINT DATE: Oct 26, 2020 - 5:39pm

Order Plans @ www.idline.com