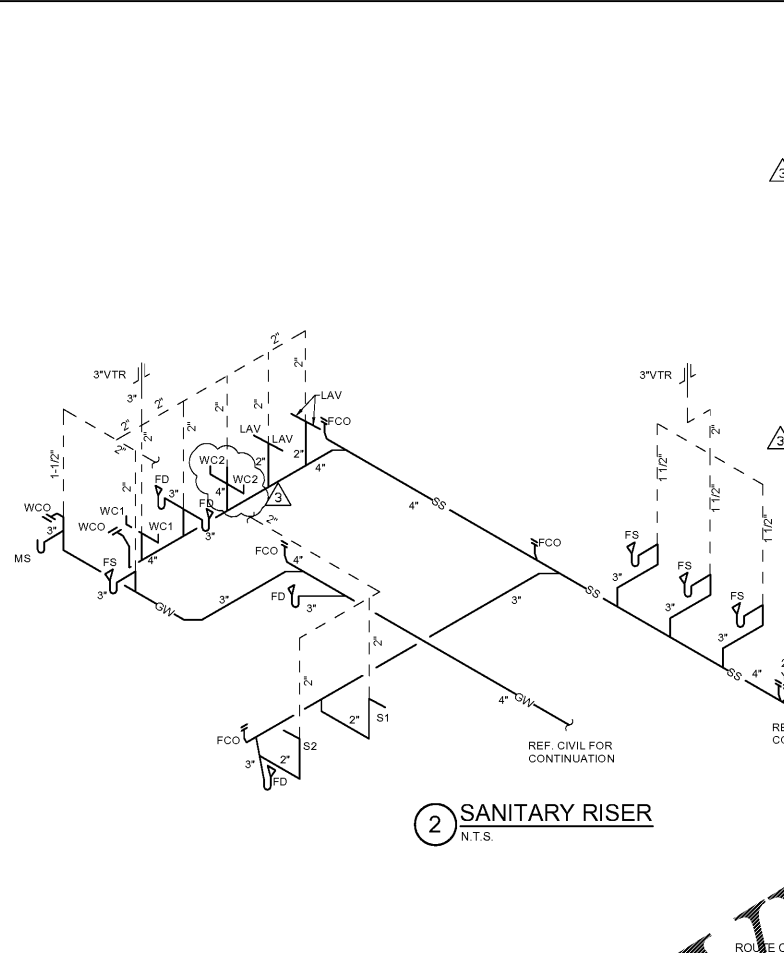


| PLUMBING SYMBOLS |                                 |
|------------------|---------------------------------|
| SS               | SANITARY SEWER                  |
| GW               | GREASE WASTE                    |
| GI               | GREASE INTERCEPTOR              |
| ---              | DOMESTIC COLD WATER             |
| ---              | DOMESTIC HOT WATER              |
| ---              | DOMESTIC HOT WATER RETURN       |
| FW               | FILTERED WATER                  |
| G                | NATURAL GAS                     |
| CD               | CONDENSATE DRAIN                |
| ---              | PLUMBING VENT                   |
| U                | UNION                           |
| C                | ELBOW - TURNED DOWN             |
| O                | ELBOW - TURNED UP               |
| T                | TEE - TURNED DOWN               |
| T                | TEE - TURNED UP                 |
| B                | BALL VALVE                      |
| H                | SHUT-OFF VALVE IN VERTICAL LINE |
| BP               | BACKFLOW PREVENTER              |
| FD               | FLOOR DRAIN                     |
| FS               | FLOOR SINK                      |
| FCO              | FLOOR CLEANOUT                  |
| YCO              | YARD CLEANOUT                   |
| FPWH             | FREEZE PROOF WALL HYDRANT       |
| HB               | HOSE BIBB                       |
| WCO              | WALL CLEANOUT                   |
| GR               | GAS PRESSURE REGULATOR          |
| GC               | GAS COCK                        |

- ### PLUMBING NOTES
- NOTES APPLY TO ALL PLUMBING SHEETS.
  - EACH CONTRACTOR IS RESPONSIBLE FOR HAVING THOROUGH KNOWLEDGE OF ALL DRAWINGS AND SPECIFICATIONS AS THEY RELATE TO THIS WORK. NO ADDITIONAL COMPENSATION SHALL BE ALLOWED DUE TO LACK OF THIS KNOWLEDGE.
  - PROVIDE ALL MATERIALS FOR A COMPLETE INSTALLATION IN ALL RESPECTS READY FOR INTENDED USE AND IN STRICT ACCORDANCE WITH STATE AND LOCAL CODES AND MANUFACTURER'S RECOMMENDATIONS.
  - COORDINATE SEWER AND WATER CONNECTIONS WITH CIVIL AND AHJ. PROVIDE PRESSURE REDUCING VALVE AND BACKFLOW PREVENTER AS SHOWN OR REQUIRED BY AHJ. VERIFY INVERT AND SLOPE OF INCOMING SANITARY SEWER BEFORE TRENCHING.
  - REFER TO RISER DIAGRAMS AND PLUMBING FIXTURE SCHEDULE FOR ALL PIPING AND PIPE SIZES NOT SHOWN ON PLAN.
  - SANITARY AND STORM SEWER PIPING SHOWN IS BASED ON 1/4" PER FOOT FALL FOR 1/2" PIPE SMALLER THAN 3" DIAMETER AND 1/8" PER FOOT FALL FOR PIPE 3" DIAMETER AND LARGER.
  - ALL SEWER PIPING BELOW SLAB TO BE 2" DIAMETER MINIMUM.
  - PROVIDE ACCESS DOORS TO ALL CONCEALED VALVES AND CLEAN-OUTS, AND NOT ABOVE AN ACCESSIBLE CEILING.
  - PROVIDE TRAP SEAL PRIMERS AND 1/2" COPPER TUBING CONNECTION TO ALL FLOOR DRAINS AS SHOWN OR AS REQUIRED BY AHJ. CONTRACTOR SHALL VERIFY REQUIREMENTS.
  - INSTALL VTR'S, EXHAUST FANS, AND FLUES A MINIMUM 5'-0" FROM PARAPET OR OUTSIDE WALL AND 10'-0" MINIMUM FROM EQUIPMENT WITH OUTSIDE AIR INTAKE.
  - INSTALL WATER PIPE ON INSIDE OF EXTERIOR WALL INSULATION TO PREVENT FREEZING.
  - WHEN DEEP FROST LOCATIONS ARE ENCOUNTERED, ROUTE SANITARY LINES UNDER BUILDING AS MUCH AS POSSIBLE.
  - PROVIDE PVC SLEEVE FOR ALL COLD/HOT WATER FLOOR PIPE PENETRATIONS. MAKE SLEEVE LARGE ENOUGH FOR INSULATION. SEAL WITH GRAY MASTIC AND ENSURE OF NO WATER PENETRATIONS.
  - PROVIDE AND INSTALL WATTS 8A VACUUM BREAKER ON ANY THREADED EXTERIOR OR INTERIOR FAUCETS.
  - ALL WATER SHUT-OFF VALVES SHALL BE "BALL LOCK" TYPE. PROVIDE SHUT-OFF VALVES AT EACH TERMINATION POINT OF ASSOCIATED EQUIPMENT.
  - PROVIDE SEISMIC BRACING BASED ON APPROPRIATE SEISMIC ZONE REQUIREMENTS PER LOCAL AND NATIONAL CODES. CONTRACTOR'S RESPONSIBILITY INCLUDES STRUCTURAL ENGINEER'S CERTIFICATION ON DETAILS SUBMITTED FOR PERMITTING.

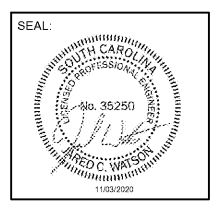


| PLUMBING FIXTURE SCHEDULE |                           |                   |                                                            |      |     |        |        |                                                                                                                                                                                                                                                                                                                                                                                                                                                                                                                          |
|---------------------------|---------------------------|-------------------|------------------------------------------------------------|------|-----|--------|--------|--------------------------------------------------------------------------------------------------------------------------------------------------------------------------------------------------------------------------------------------------------------------------------------------------------------------------------------------------------------------------------------------------------------------------------------------------------------------------------------------------------------------------|
| TAG                       | FIXTURE                   | MANUFACTURER      | MODEL                                                      | CW   | HW  | WASTE  | VENT   | DESCRIPTION                                                                                                                                                                                                                                                                                                                                                                                                                                                                                                              |
| WC1                       | WATER CLOSET              | AMERICAN STANDARD | CADET 5805 301 (ROW L) 4142 100 (TANK L) 4142 801 (TANK R) | 12"  | --- | 4"     | 2"     | FIXTURE AND HARDWARE PROVIDED AND INSTALLED BY PLUMBING CONTRACTOR 12" ROUGH-IN, COLOR: WHITE AMERICAN STANDARD CADET OPEN FRONT SEAT, NO COVER, 17" RIM HEIGHT, FOR HAND CAMPED, PRESSURE ASSISTED 1.1 GPF, MOUNT CONTROLS ON ACCESSIBLE SIDE OF TOILET. CONTRACTOR TO COORDINATE WITH FIXTURE SUPPLIER FOR LEFT-RIGHT HAND FLUSH LEVER TO COMPLY WITH ADA REQUIREMENTS.                                                                                                                                                |
| WC2                       | WATER CLOSET              | AMERICAN STANDARD | CADET 5805 301 (ROW L) 4142 100 (TANK L) 4142 801 (TANK R) | 12"  | --- | 4"     | 2"     | FIXTURE AND HARDWARE PROVIDED AND INSTALLED BY PLUMBING CONTRACTOR 12" ROUGH-IN, COLOR: WHITE AMERICAN STANDARD CADET OPEN FRONT SEAT, NO COVER, 15" RIM HEIGHT, PRESSURE ASSISTED 1.1 GPF.                                                                                                                                                                                                                                                                                                                              |
| LAV                       | LAVATORY                  | KOHLER            | BRENHAM K1004                                              | 12"  | 12" | 1 1/4" | 1 1/4" | FIXTURE AND HARDWARE PROVIDED AND INSTALLED BY PLUMBING CONTRACTOR ADA COMPLIANT WALL MOUNT WITH 2 1/2" CONCEALED ARM CARBEN, 4" CENTER WITH CHROME T88 MODEL EC-3103-11W MOTION ACTIVATED FAUCET (ITEM #179), 8" CHROME OPERATOR 2.0 GPM FAUCET INCLUDES Aerator, MODULE WITH INTEGRAL FLOW CONTROL, 8" TITANIUM TEMPERATURE CONTROL MIXING VALVE SET TO 105°F WITH INTEGRAL CHECK VALVES, 1/2" STAINLESS STEEL FLEXIBLE HOSES, INSTALL KOHLER BRENHAM BR004-K-1008 REF ARCHITECTURAL DRAWINGS FOR ROUGH-IN ELEVATIONS. |
| MS                        | MOP SINK                  | FIAT              | MSB 2424                                                   | 12"  | 12" | 3"     | 1 1/2" | CONTRACTOR NO 800A FAUCET WITH INTEGRAL VACUUM BREAKER, NO 802 A-HOSE AND BRACKET, NO 14038B FLOOR STRAINER AND NO 899 CC MOP HANGER.                                                                                                                                                                                                                                                                                                                                                                                    |
| S1                        | HAND SINK                 | ---               | ---                                                        | 12"  | 12" | 1 1/2" | 1 1/2" | FIXTURE AND HARDWARE OWNER FURNISHED, INSTALLED BY PLUMBING CONTRACTOR ADA COMPLIANT, STAINLESS STEEL FIXTURE, BRASS FAUCET & P-TRAP PROVIDED WITH STOP VALVES, FLEXIBLE SUPPLY LINES, RUBBER LAY GUARD 2 PROTECTIVE PIPE COVERS ON EXPOSED HOT WATER AND DRAIN LINES AND TEMPERATURE-ACTUATING MIXING VALVE & SET TO 105°F.                                                                                                                                                                                             |
| S2                        | HAND SINK                 | JOHN BOOS         | FBHS-W51419-BBLR                                           | 12"  | 12" | 1 1/2" | 1 1/2" | FIXTURE AND HARDWARE OWNER FURNISHED, INSTALLED BY PLUMBING CONTRACTOR ADA COMPLIANT, CUSTOM WALL MOUNT 10" FRONT TO BACK X 14" W X 10" H HAND SINK (PRODUCTION FIN), PROVIDED WITH BRASS FAUCET SUPPLY (SEE PART #8-1148 & P-TRAP, INSTALL TRIGGER LAY GUARD 2 PROTECTIVE PIPE COVERS ON EXPOSED HOT WATER AND DRAIN LINES, STOP VALVES AND TEMPERATURE-ACTUATING MIXING VALVE & SET TO 105°F.                                                                                                                          |
| S3                        | 3-COMPARTMENT SINK        | TARR BON          | TA-P33029-LR-1/4                                           | 12"  | 12" | 3"     | 2"     | OWNER FURNISHED, INSTALLED BY PLUMBING CONTRACTOR ADA COMPLIANT, 18" MODEL #1012-14-CR-ET FAUCET (EP-1 ITEM #112), P-TRAP AND STOP VALVES.                                                                                                                                                                                                                                                                                                                                                                               |
| FPWH                      | FREEZE PROOF WALL HYDRANT | JOSAM             | 71000                                                      | 3/4" | --- | ---    | ---    | OWNER FURNISHED, INSTALLED BY PLUMBING CONTRACTOR ADA COMPLIANT, 1 1/2" CAST BRONZE, 1 1/2" HANDS, POLISHED FINE, FINISHED LOCKING COVER, BRASS WALL MOUNT, RENEWABLE BEAT-BRONZE OPERATING PARTS, 1" N.P.T. INLET AND 3/4" N.P.T. OUTLET.                                                                                                                                                                                                                                                                               |
| HB                        | HOSE BIBB                 | WATTS             | SC8                                                        | 3/4" | --- | ---    | ---    | FIXTURE AND HARDWARE PROVIDED AND INSTALLED BY PLUMBING CONTRACTOR CAST BRASS THROUGH SLAB (WITH 1/2" CAST IRON HANDLE) AND TAMPER-PROOF VACUUM BREAKER, 3/4" N.P.T. INLET AND 3/4" N.P.T. OUTLET PROVIDED WITH 28 FOOT HOSE AND GUN. MODEL #724.                                                                                                                                                                                                                                                                        |

| SPECIALTY PLUMBING FIXTURE SCHEDULE |                                     |                        |                                                                                                                            |       |  |
|-------------------------------------|-------------------------------------|------------------------|----------------------------------------------------------------------------------------------------------------------------|-------|--|
| TAG                                 | FIXTURE                             | MODEL                  | DESCRIPTION                                                                                                                | NOTES |  |
| WH                                  | WATERHAMMER ARRESTOR                | SILOX CHIEF 852A       | CONFORM TO PSI WP-201, ASSE 1013 EMP TO 250'F, MAX 350 PSI WORKING PRESSURE.                                               | A     |  |
| TMV                                 | TEMPERATURE MIXING VALVE            | WATTS LFUS8-M1         | 1/2" UP TO 120°F, WITH 1/2" CHECK VALVES, BRASS BODY, AND COPPER THEMOS-TAT.                                               |       |  |
| ---                                 | TRAP PRIMER                         | SILOX CHIEF 695        | BRONZE PRIMER VALVE WITH REMOVABLE OPERATING PARTS, INTERIOR VACUUM BREAKER AND GASKETED ACCESS COVER.                     |       |  |
| RPZ                                 | REDUCED PRESSURE BACKFLOW PREVENTER | WATTS LF9020TB         | LEAD FREE BRONZE BODY, WITH SHUT OFF VALVES, Y STRAINER, AND TEST COCKS.                                                   |       |  |
| FD                                  | FLOOR DRAIN                         | SILOX CHIEF 832-365PQ2 | 3" LIGHT DUTY DRAIN WITH 1" SQUARE PVC BODY WITH NECK, BRONZE RING AND STRAINER PROVIDED WITH 3" DRAIN AND 1 1/2" VENT.    |       |  |
| FS                                  | FLOOR SINK                          | SILOX CHIEF 851        | WHITE PVC 12" X 12" FLOOR SINK WITH 3/4" HEAVY DUTY PVC HALF GLOBE SEDIMENT BUCKET PROVIDED WITH 1" DRAIN AND 1 1/2" VENT. | B     |  |
| FCO                                 | FLOOR CLEANOUT                      | SILOX CHIEF 851        | PVC BODY, ROUND HEAVY DUTY CAST IRON TOP, POLYPROPYLENE DR. AND PLUG, ADJUSTABLE TO FINISH SURFACE.                        | B     |  |
| YCO                                 | YARD CLEANOUT                       | SILOX CHIEF 834        | DURA-COATED CAST IRON, DOUBLE LANCED AND HEAVY DUTY SCRETTED HOUBING AND DUCTILE IRON COVER.                               | B     |  |
| WCO                                 | WALL CLEANOUT                       | SILOX CHIEF 873        | THREADED, COUNTERSINK BRONZE CLEANOUT PLUG, PROVIDE DRILLED TAP FOR CENTER SCREW AND STAINLESS STEEL COVER.                |       |  |

NOTES:  
A. SIZE PER MANUFACTURER'S RECOMMENDATION.  
B. CLEANOUT SHALL BE SAME SIZE AS PIPE BEING SERVED.  
C. THIS SCHEDULE IS COMPREHENSIVE. ALL MARKS MAY OR MAY NOT BE USED ON PLANS.

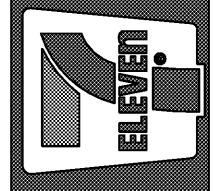
JARED C. WATSON, PE  
2807 S. CREEKSIDE DR., SUITE 701  
ROGERS, AR 72758  
479-877-3188  
SC LICENSE # 35250



STIPULATION FOR REUSE  
THIS DRAWING WAS PREPARED FOR THE PROJECT AND SITE SPECIFICALLY IDENTIFIED. IT IS NOT TO BE REUSED FOR ANY OTHER PROJECT WITHOUT THE WRITTEN CONSENT OF THE DESIGNER. THE DESIGNER ASSUMES NO LIABILITY FOR ANY REUSE OF THIS DRAWING FOR ANY PROJECT OTHER THAN THE ONE SPECIFICALLY IDENTIFIED. THE USER OF THIS DRAWING FOR ANY OTHER PROJECT SHALL BE RESPONSIBLE FOR OBTAINING ALL NECESSARY PERMITS AND FOR THE ACCURACY OF THE INFORMATION PROVIDED TO THE USER. THE USER SHALL BE RESPONSIBLE FOR OBTAINING ALL NECESSARY PERMITS AND FOR THE ACCURACY OF THE INFORMATION PROVIDED TO THE USER. THE USER SHALL BE RESPONSIBLE FOR OBTAINING ALL NECESSARY PERMITS AND FOR THE ACCURACY OF THE INFORMATION PROVIDED TO THE USER.

Submissions:  
2020-10-01 PR1  
2020-10-23 REV 1  
2020-11-03 PR2

7-ELEVEN, INC.  
3200 HACKBERRY ROAD, IRVING, TEXAS 75063  
7-ELEVEN #1045634  
1401 COVENTRY ROAD  
MYRTLE BEACH, SC 29575



JOB NUMBER: 20022  
CHECKED BY:  
DRAWN BY:  
DATE: 08/31/20

TITLE:  
DRAIN PIPING  
PLAN RISER  
AND  
SCHEDULES

SHEET:  
P1.0

