

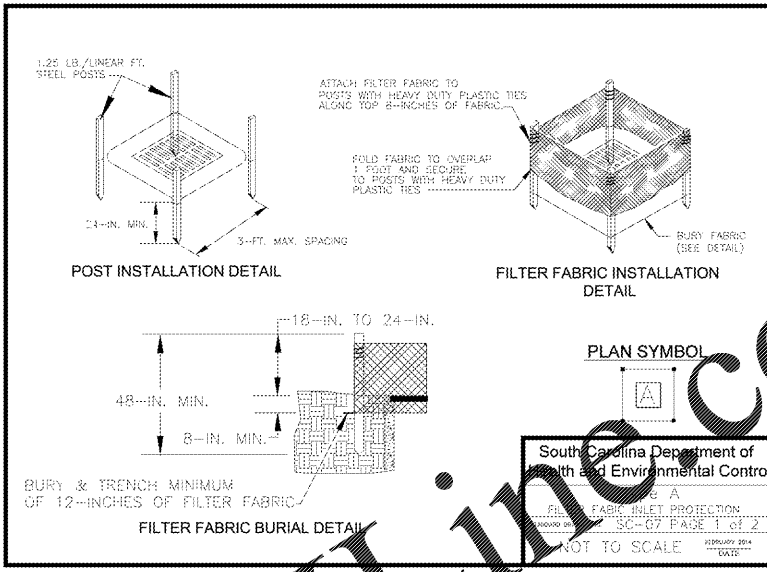
**BLAKEWAY**  
surveying + engineering + environmental

630 N. WITCHDUCK RD. - VA BEACH, VIRGINIA 23462  
P757 226 0081 - F757 226 8765  
www.blakewaycorp.com

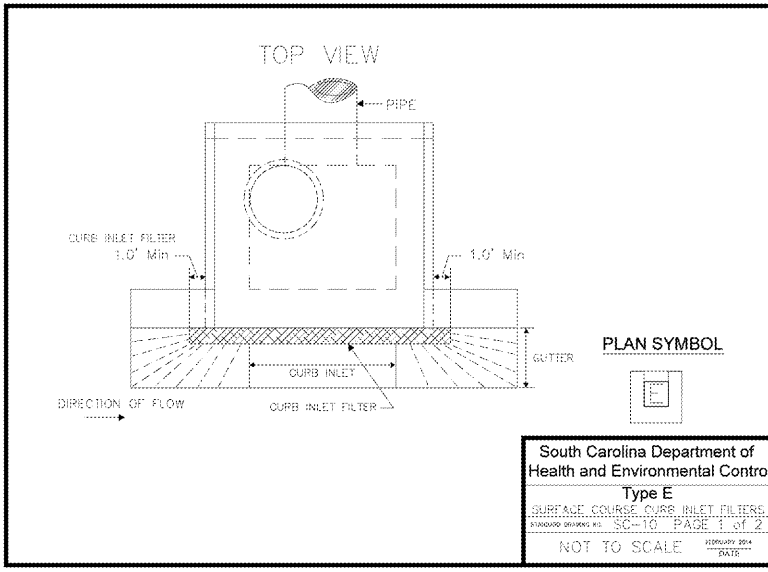
REV	DATE	DESCRIPTION

DATE ISSUED	08-27-20
DRAWN BY	GAF
REVIEWED BY	GAF
DESIGNED BY	GAF

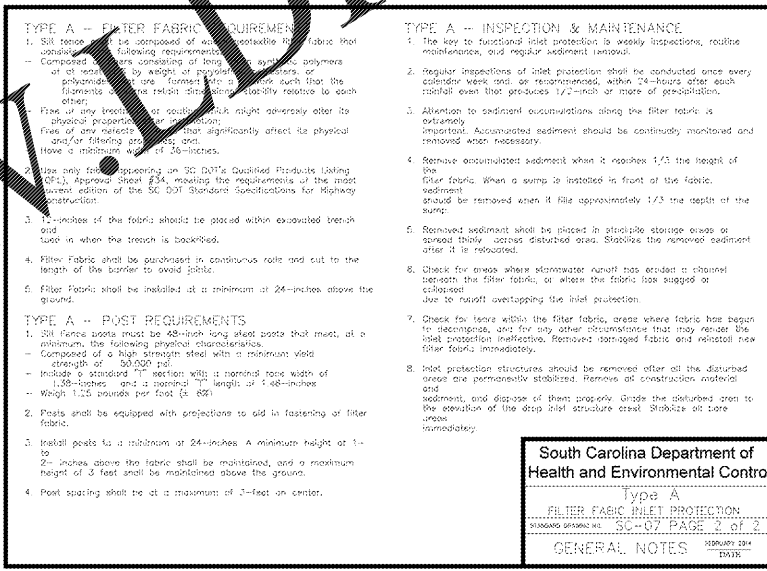
SHEET NO.	CES-3.1
LOCATION	N. HWY 17 AND COVENTRY RD.
SHEET TITLE	E&S CONTROL DETAILS
STORE NUMBER	1046736
DATE	10-02-20
PROJECT NO.	1461
COUNTY	HORRY COUNTY, SC



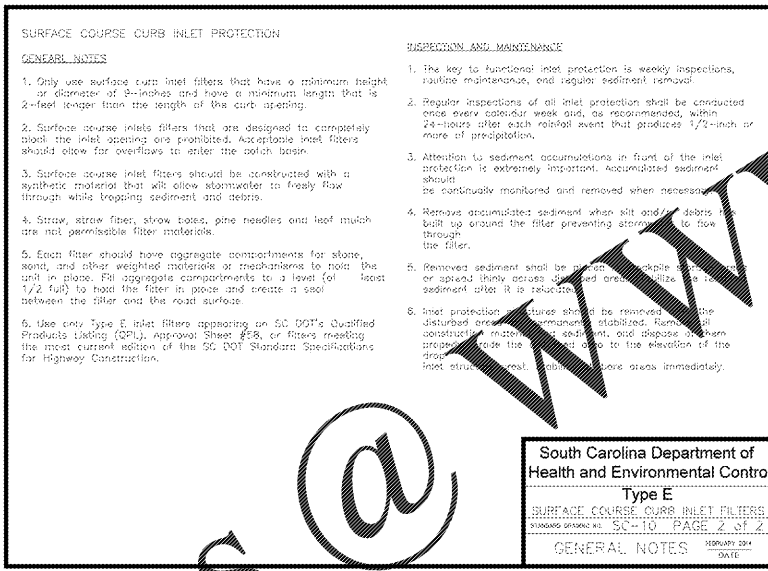
South Carolina Department of Health and Environmental Control  
Type A  
FILTER FABRIC INLET PROTECTION  
DESIGNED BY: SC-07 PAGE 1 OF 2  
JANUARY 2014 DATE



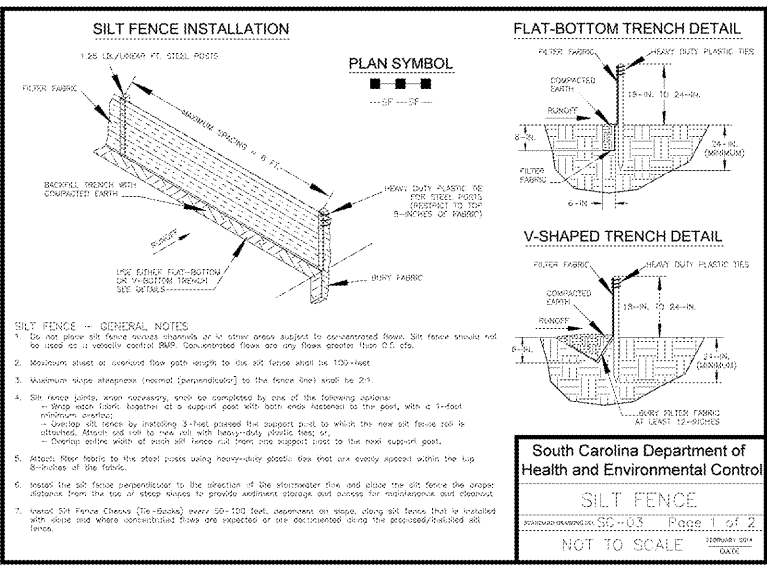
South Carolina Department of Health and Environmental Control  
Type E  
SURFACE COURSE CURB INLET FILTERS  
DESIGNED BY: SC-10 PAGE 1 OF 2  
JANUARY 2014 DATE



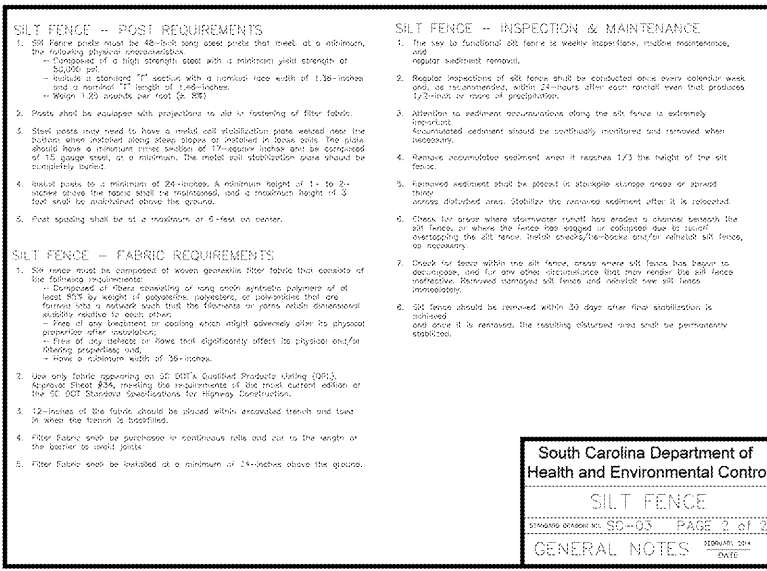
South Carolina Department of Health and Environmental Control  
Type A  
FILTER FABRIC INLET PROTECTION  
DESIGNED BY: SC-07 PAGE 2 OF 2  
JANUARY 2014 DATE



South Carolina Department of Health and Environmental Control  
Type E  
SURFACE COURSE CURB INLET FILTERS  
DESIGNED BY: SC-10 PAGE 2 OF 2  
JANUARY 2014 DATE



South Carolina Department of Health and Environmental Control  
SILT FENCE  
DESIGNED BY: SC-03 PAGE 1 OF 2  
JANUARY 2014 DATE



South Carolina Department of Health and Environmental Control  
SILT FENCE  
DESIGNED BY: SC-03 PAGE 2 OF 2  
JANUARY 2014 DATE

Order Plans @