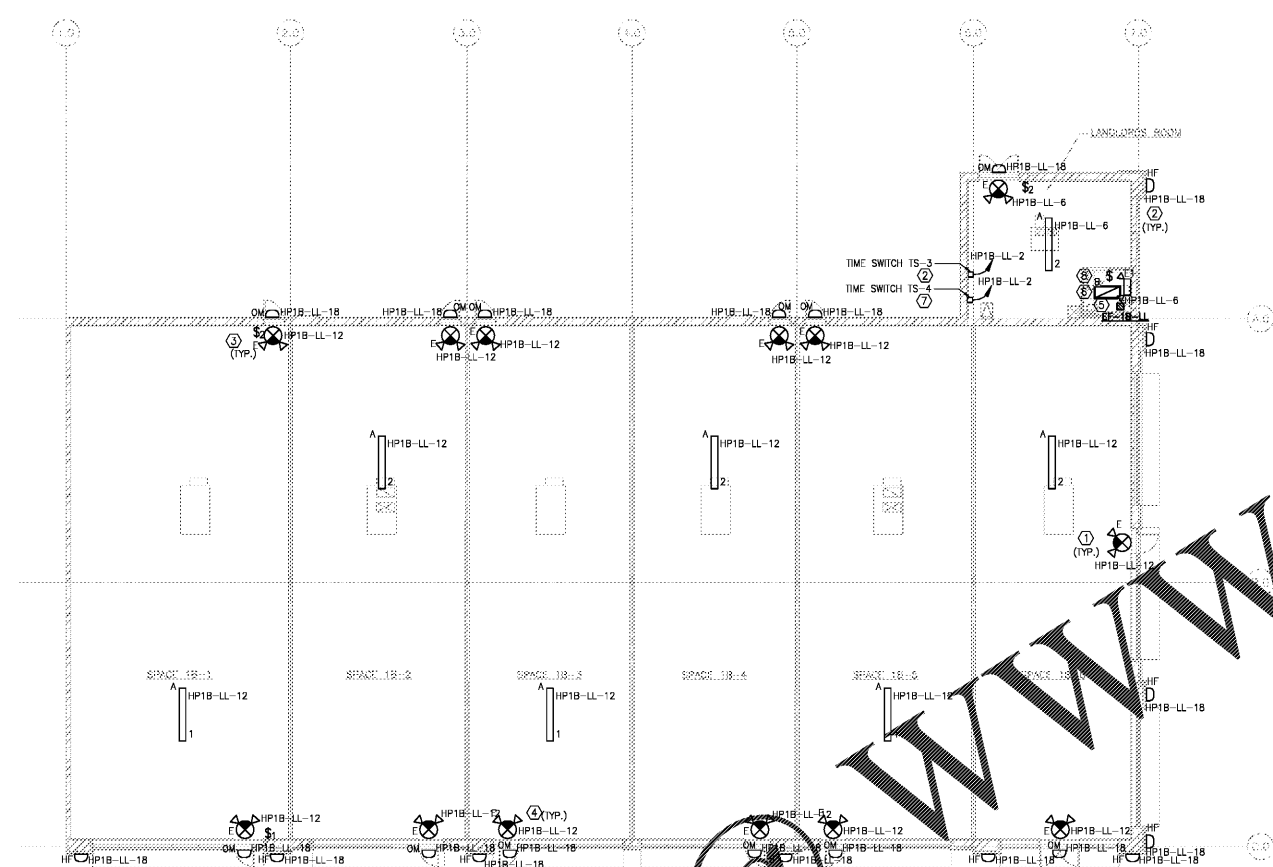


D·Z·A
ASSOCIATES, INC.

ILL. REG. # 104-001714 Suite 233N
2625 Butterfield Road 60523
Oak Brook, Illinois
Phone 630-230-1020 www.dzainc.com

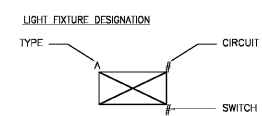
© 2009 D-Z-A ASSOCIATES, INC.
THE ARCHITECT SHALL BE DEEMED THE AUTHOR OF
THIS DOCUMENT AND SHALL BE RESPONSIBLE FOR
REVISIONS AND OTHER MATTERS, INCLUDING DEPICTIONS.

| Rev. No. | Description | Date |
|----------|---------------------------|----------|
| ▲ | ISSUED FOR BID AND PERMIT | 10/16/20 |
| | | |
| | | |
| | | |



LIGHTING LEGEND

| MARK | SYMBOL | DESCRIPTION | COMMENTS |
|------|--------|---|------------------------|
| A | — | LED STRIP LIGHT EXH. S/NL20 3ASFC; 49.7W OR EQUIVALENT | IN OPEN AREA |
| M | △ | WALL SCONCE LED LITHONIA LIGHTING 29W; MRW LED-P2-30K-SR4-120-ETDWH | EXTERIOR |
| D | □ | WBRO6/D154-FS16 FLOURESCENT DYNAMIC LIGHTING; 42W; DOWNLIGHT SCONCE | 12'-4" A.F.F. EXTERIOR |
| E | ⊗ | LITHONIA LIGHTING LHOM LED EXIT/EMERGENCY SIGN; FACE: 4.3W; HEADS: 1.5W EACH | EXTERIOR DOOR LOCATION |
| E1 | ⊕ | LED EMERGENCY LIGHT LITHONIA LIGHTING ELM2 LED; HEADS 1.5W EACH | MOUNT ON WALL |
| B | ⊗ | 2x4 LED TROFFER LIGHT; LITHONIA LIGHTING #2ESL4; 30W LED | IN TOILET ROOM |



LIGHTING PLAN - RETAIL 1B
 E2.1 SCALE: 3/32" = 1'-0"

GENERAL NOTES:

- CONTRACTOR SHALL COORDINATE ALL ELECTRICAL CONSTRUCTION WITH OTHER TRADES TO AVOID CONFLICTS.
- CONTRACTOR SHALL VERIFY THERE IS NO OVERLOADING OF BRANCH CIRCUITS AND/OR PANEL BOARD REGARDLESS OF CIRCUITRY INDICATIONS.
- CONTRACTOR SHALL VERIFY EXTERIOR LIGHTING IS IN COMPLIANCE WITH LOCAL ORDINANCES. CONSULT OWNER/ARCHITECT FOR ALTERNATE FIXTURE.

KEY NOTES

- ALL EMERGENCY LIGHTS, EXIT/EMERGENCY SIGN, AND NIGHT LIGHTS SHALL BE CONNECTED AHEAD OF SWITCH.
- EXTERIOR LIGHTS SHALL BE CONNECTED TO HOUSE PANEL TIME SWITCH TS-3. TIME SWITCH SHALL FUNCTION ON A SCHEDULED BASIS USING TIME OF DAY WITH AN INDEPENDENT PROGRAM SCHEDULE THAT CONTROLS THE EXTERIOR LIGHTING.
- THE LIGHT SWITCH HEIGHT INCLUDING TOP OF COVER PLATE TO BE 4' A.F.F.
- EXIT/EMERGENCY SIGN SHALL BE CONNECTED TO TENANT PANEL BOARD AFTER INSTALLATION.
- EXHAUST FAN SHALL BE INTERLOCKED WITH TOILET ROOM LIGHT SWITCH.
- TOILET ROOM LIGHT FIXTURE SHALL BE CONNECTED TO CIRCUIT HP1B-LL-6 AND CONTROLLED BY LIGHT SWITCH LOCATED IN TOILET ROOM.
- INTERIOR LIGHTS SHALL BE CONNECTED TO HOUSE PANEL TIME SWITCH TS-4. TIME SWITCH SHALL FUNCTION ON A SCHEDULED BASIS USING TIME OF DAY WITH AN INDEPENDENT PROGRAM SCHEDULE THAT CONTROLS THE EXTERIOR LIGHTING.
- PROVIDE OCCUPANCY SENSOR CONNECT TO CIRCUIT SERVING THE LIGHTING IN THE TOILET ROOM. FIELD COORDINATE EXACT LOCATION AND POWER PACK AS PER MANUFACTURER RECOMMENDATIONS. OCCUPANCY SENSORS WILL AUTOMATICALLY TURN OFF LIGHTS WITHIN 30 MINUTES OF ALL OCCUPANTS LEAVING SPACE.

NOTE:
BUILDING SHALL BE SUBDIVIDED FOR OCCUPANCY BY MULTIPLE TENANTS; BUILDING NOT DESIGNED FOR OCCUPANCY UNDER THIS PERMIT SUBMITTAL. GENERAL CONTRACTOR TO PROVIDE SEPARATE LINE ITEM COST FOR FIRE ALARM SERVICES IN TENANT SPACES, MAY BE INSTALLED DURING CONSTRUCTION OF DIVIDED TENANT SPACES.

Order Plans @

WWW.LDILING.COM

Salem Gate Market

RETAIL 1B

CONYERS, GEORGIA

ELECTRICAL LIGHTING PLAN

| | | | | | |
|--------------|----------|-----------|----|------------|------|
| Date: | 10/16/20 | Drawn by: | AK | Sheet No.: | E2.1 |
| Project No.: | 20.062 | Rev.: | AR | | (1) |

CRAY Ray Group Consulting Engineers, Inc.
1877 Powers Ferry Road
Building 80, Suite 100
Atlanta, Georgia 30329
Tel. (770) 953-1448
Fax. (770) 953-8023