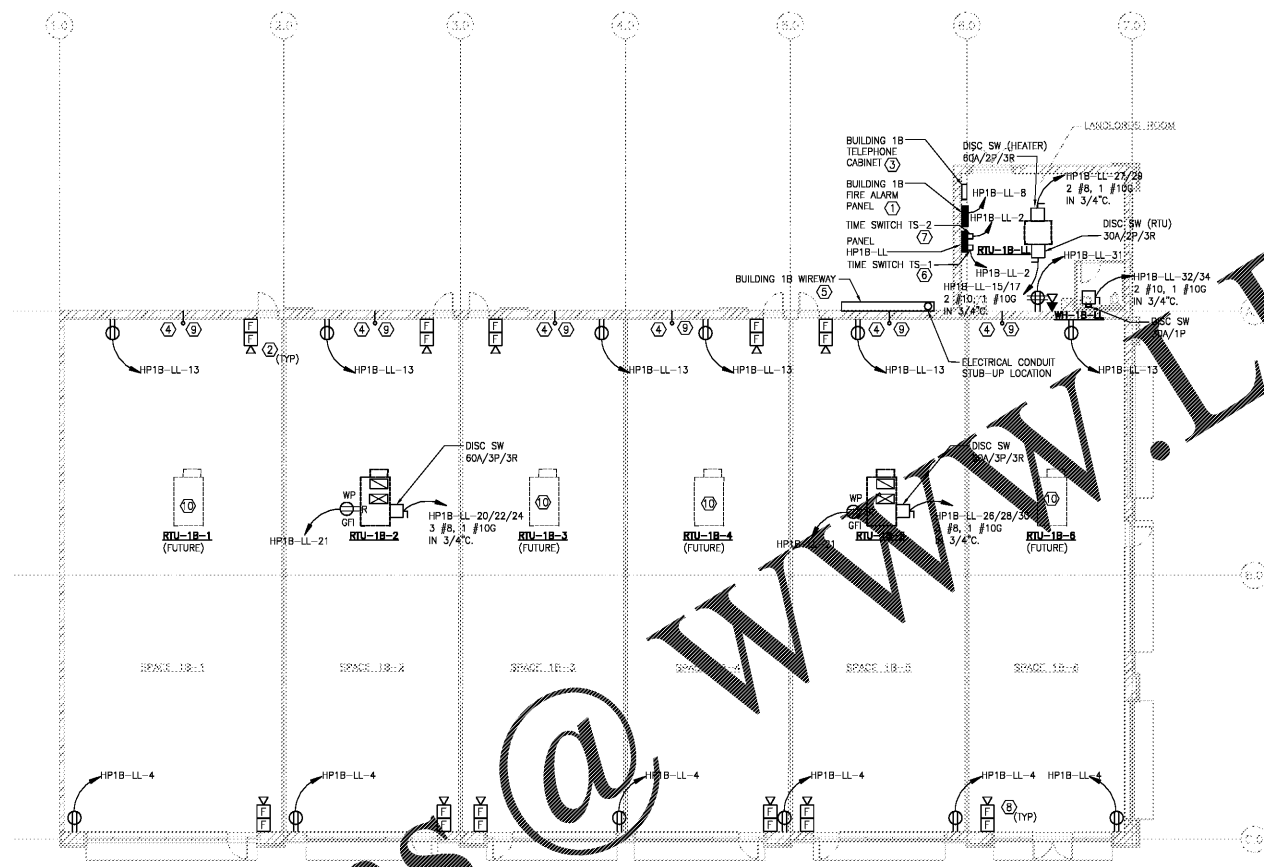


**D-Z-A**  
ASSOCIATES, INC.

ILL. REG. # 104-001714  
2625 Butterfield Road Suite 233N  
Oak Brook, Illinois 60523  
Phone 630-520-1020 www.dzainc.com

© 2009 D-Z-A ASSOCIATES, INC.  
THIS PROJECT SHALL BE OWNED BY THE ARCHITECT. THE ARCHITECT SHALL BE OBTAIN THE AUTHORITY OF THESE DOCUMENTS AND SHALL BE RESPONSIBLE FOR ANY REVISIONS AND OTHER MATTERS, INCLUDING EQUIPMENT.

Rev. No.	Description	Date
▲ 1	ISSUED FOR BID AND PERMIT	10/16/20



**POWER PLAN - RETAIL 1B**  
SCALE: 3/32" = 1'-0"

**GENERAL NOTES:**

1. ALL 120/208V SINGLE PHASE AND THREE PHASE, 15 AND 20 AMP DEVICES INSTALLED OUTDOORS, IN BATHROOMS, KITCHENS, AND REARER AREAS SHALL HAVE GROUND FAULT CIRCUIT INTERRUPTOR PROTECTION.
2. CONTRACTOR SHALL COORDINATE ALL ELECTRICAL CONSTRUCTION WITH OTHER TRADES TO AVOID CONFLICTS.
3. CONTRACTOR SHALL VERIFY THERE IS NO OVERLOADING OF BRANCH CIRCUITS AND/OR PANEL BOARD REGARDLESS OF CIRCUITRY INDICATED.
4. CONDUITS BELOW SLAB SHALL BE PVC CONDUITS WITH METAL ELBOW, ENCLOSED IN WALL/CILING CONDUITS SHALL BE METAL CONDUITS, ANY EXPOSED CONDUITS SHALL BE METAL CONDUITS ONLY, ENCLOSED IN CONCRETE CONDUITS SHALL BE PVC.

**KEY NOTES**

1. PROVIDE BUILDING FIRE ALARM SYSTEM AND FIRE ALARM CONTROL PANEL. FIRE ALARM SYSTEM SHALL BE COORDINATED BY FIRE PROTECTION ENGINEER AND FIRE PROTECTION CONTRACTOR.
2. PROVIDE FIRE ALARM DEVICES. CONNECT FIRE ALARM DEVICES TO BUILDING FIRE ALARM PANEL.
3. TELEPHONE CABINET. COORDINATE EXACT LOCATION AND REQUIREMENTS WITH TELEPHONE COMPANY. RUN CONDUIT TO TELEPHONE COMPANY POINT OF SERVICE.
4. PROVIDE 1" CONDUIT AND PULL STRING FROM LANDLORD TELEPHONE SERVICE CABINET TO EACH TENANT SPACE. FIELD LOCATE CONDUIT AND PULL STRING. A TOTAL OF SIX (6) OF TENANTS SHALL HAVE CONDUIT IN SPACE.
5. CONTRACTOR TO FIELD LOCATE BUILDING 1B WIREWAY.
6. CONTRACTOR SHALL PROVIDE TIME SWITCH WITH MULTIPLE CONTACTS TO CONTROL TENANT SIGNAGE. TIME SWITCH IS-1 SHALL FUNCTION ON A SCHEDULED BASIS USING TIME-OF-DAY WITH AN INDEPENDENT PROGRAM SCHEDULE THAT CONTROLS THE TENANT SIGNAGE.
7. CONTRACTOR SHALL PROVIDE TIME SWITCH TO CONTROL MONUMENT SIGN. TIME SWITCH IS-2 SHALL FUNCTION ON A SCHEDULED BASIS USING TIME OF DAY WITH AN INDEPENDENT PROGRAM SCHEDULE THAT CONTROLS MONUMENT SIGN.
8. FIRE ALARM DEVICE SHALL BE INSTALLED AS CLOSE TO DOOR AS POSSIBLE. DEVICE SHALL BE INSTALLED ON OPPOSITE SIDE OF FUTURE PARTITION.
9. CONTRACTOR TO STUB UP ONE (1) 2" CONDUIT INTO BUILDING AS SHOWN. CONTRACTOR TO PROVIDE CAP FOR CONDUIT STUB UP.
10. FUTURE RTU SHALL BE INSTALLED AND CONNECTED TO FUTURE TENANT PANEL.

**NOTE:**  
BUILDING SHALL BE SUBDIVIDED FOR OCCUPANCY BY MULTIPLE TENANTS; BUILDING NOT DESIGNED FOR OCCUPANCY UNDER THIS PERMIT SUBMITTAL. GENERAL CONTRACTOR TO PROVIDE SEPARATE LINE ITEM COST FOR FIRE ALARM DEVICES IN TENANT SPACES; MAY BE INSTALLED DURING CONSTRUCTION OF DIVIDED TENANT SPACES.

Order Plans @ WWW.LDIIline.com

**Salem Gate Market**

RETAIL 1B

CONYERS, GEORGIA

ELECTRICAL POWER PLAN

Date:	Drawn by:	Sheet No.:
10/16/20	AK	E1.1
Project No.:	Rev.:	(1)
20.062	AR	

**CRAY** Ray Group Consulting Engineers, Inc.  
1877 Powers Ferry Road  
Building 80, Suite 100  
Atlanta, Georgia 30329  
Tel. (770) 953-1448  
Fax. (770) 953-4923