

1 DUMPSTER GATE ELEVATION
1/4" = 1'-0"

2 DUMPSTER ENCLOSURE PLAN
1/4" = 1'-0"

3 INDUSTRIAL HINGE DETAIL
N.T.S.

4 WALL SECTION
3/4" = 1'-0"

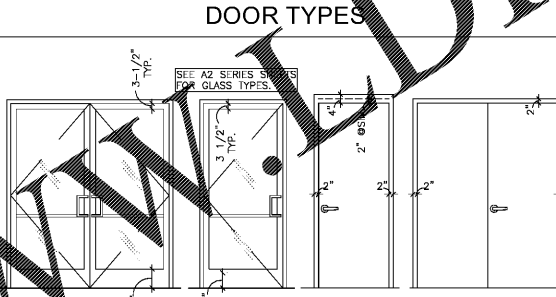
PLUMBING FIXTURE/TOILET ACCESSORY SCHEDULE

NO.	DESCRIPTION	MANUFACTURER	MOUNTING HEIGHT
(A)	WATER CLOSET	SEE PLUMBING DRAWINGS.	1/ SEAT 17"-19" AFF
(B)	LAVATORY	SEE PLUMBING DRAWINGS.	1/ LAV. @ 34" AFF
(C)	36" GRAB BAR	BOBRICK # B-5806-36	SEE ELEVATIONS.
(D)	42" GRAB BAR	BOBRICK # B-5806-42	SEE ELEVATIONS.
(E)	18" GRAB BAR	BOBRICK # B-5806-18	SEE ELEVATIONS.
(F)	TOILET PAPER HOLDER	BOBRICK # B-7885	SEE ELEVATIONS.
(G)	MIRROR	BOBRICK # B-165 18X36	SEE ELEVATIONS.

- PROVIDE PIPE INSULATION ON SUPPLY AND DRAIN PIPING UNDER LAVATORY. THERE SHALL BE NO SHARP OR ABRASIVE SURFACE UNDER LAVATORY. INSULATE TRAP AND SUPPLY PIPES WITH THERMO NO. 103 LAV GUARD.
- ALL TOILET ROOM ACCESSORIES SHALL COMPLY WITH THE AMERICANS WITH DISABILITIES ACT.
- BOBRICK ACCESSORIES LISTED AS DESIGN REFERENCE ONLY. SUBMIT 'OR EQUAL' FOR REVIEW.
- PROVIDE FIRE RETARDANT WOOD BLOCKING FOR ALL ACCESSORIES PER MANUFACTURER'S INSTRUCTIONS.

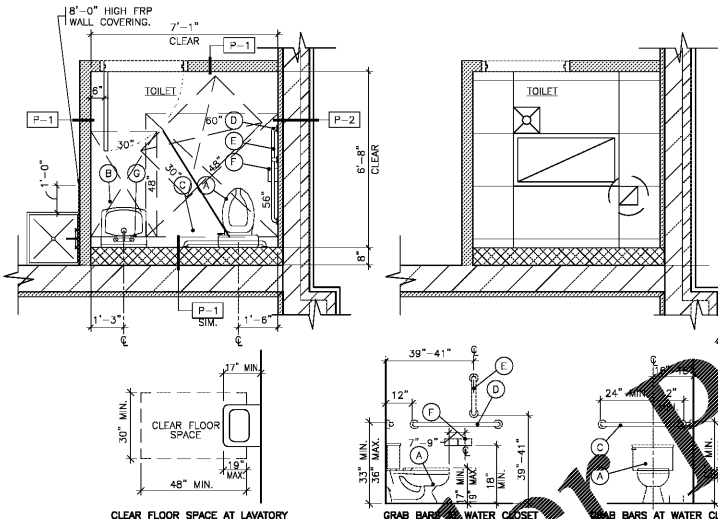
ROOM FINISH SCHEDULE

ROOM	FLOOR	BASE	WALLS	CEILING	HEIGHT	REMARKS
TOILET	FC-2	VB-1	WC-1	CG-1	16'-0"	
LANDLORD'S ROOM	FC-1			EXPOSED		



DOOR SCHEDULE

MARK	LOCATION	DOOR SIZE	DOOR	FRAME	HW/SET	REMARKS
(1)	STOREFRONT SPACE 1-B1	3'-0" x 7'-0"	1-3/4" ALUM/GLASS	B ANOD/CLEAR	ALUM ANOD/CLEAR	- 1
(2)	STOREFRONT SPACE 1-B2	3'-0" x 7'-0"	1-3/4" ALUM/GLASS	B ANOD/CLEAR	ALUM ANOD/CLEAR	- 1
(3)	STOREFRONT SPACE 1-B3	3'-0" x 7'-0"	1-3/4" ALUM/GLASS	B ANOD/CLEAR	ALUM ANOD/CLEAR	- 1
(4)	STOREFRONT SPACE 1-B4	3'-0" x 7'-0"	1-3/4" ALUM/GLASS	B ANOD/CLEAR	ALUM ANOD/CLEAR	- 1
(5)	STOREFRONT SPACE 1-B5	3'-0" x 7'-0"	1-3/4" ALUM/GLASS	B ANOD/CLEAR	ALUM ANOD/CLEAR	- 1
(6)	STOREFRONT SPACE 1-B6 (PAIR)	7'-0" x 3'-0"	1-3/4" ALUM/GLASS	A ANOD/CLEAR	ALUM ANOD/CLEAR	- 2
(7)	REAR EXIT SPACE 1B-1	3'-0" x 7'-4"	1-3/4" H.M. C	PAINT H.M. PAINT	16/AS.2	3
(8)	REAR EXIT SPACE 1B-2	3'-0" x 7'-4"	1-3/4" H.M. C	PAINT H.M. PAINT	16/AS.2	3
(9)	REAR EXIT SPACE 1B-3	3'-0" x 7'-4"	1-3/4" H.M. C	PAINT H.M. PAINT	16/AS.2	3
(10)	REAR EXIT SPACE 1B-4	3'-0" x 7'-4"	1-3/4" H.M. C	PAINT H.M. PAINT	16/AS.2	3
(11)	REAR EXIT SPACE 1B-5	3'-0" x 7'-4"	1-3/4" H.M. C	PAINT H.M. PAINT	16/AS.2	3
(12)	REAR EXIT SPACE 1-B6	3'-0" x 7'-0"	1-3/4" ALUM/GLASS	B ANOD/CLEAR	ALUM ANOD/CLEAR	- 1
(13)	LANDLORD'S ROOM	3'-0" x 7'-0"	1-3/4" H.M. D	PAINT H.M. PAINT	16/AS.2	5
(14)	TOILET	3'-0" x 7'-0"	1-3/4" H.M. C	PAINT H.M. PAINT	7/A6.1	4



ROOM FINISH LEGEND

MARK	DESCRIPTION	MANUFACTURER/COLOR	REMARKS
FC-1	EXPOSED CONCRETE		
FC-2	12" X 12" X 1/2" GYP. BOARD	ARMSTRONG STANDARD EXCELON; 51204 STERLING	
VB-1	FRP VINYL BASE	ARMSTRONG; 61 GRAPHITE GRAY	
WC-1	WALL COVERING	MARLITE, P-151 LIGHT GRAY	
CG-1	SUSPENDED ACOUSTICAL TILE	ARMSTRONG #755 WHITE (SQUARE LAY-IN) WITH 15/16" PRELUDE GRID	

HARDWARE SETS

HARDWARE SET NO. 1

- (3) HINGES 4.5 X 4.5 NRP (BRASS) US260 (KAWNEER)
- (1) DEADLOCK MS-1850S (ADAMS RITE)
- (1) EXTERIOR CYLINDER 1E74 X C181 X RP3 US260(BEST)
- (1) DEADLOCK LEVER; 4550MS WITH INTEGRAL EXIT INDICATOR (ADAMS RITE)
- (1) PUSH BAR CP-II #14 CLEAR ANODIZED (KAWNEER)
- (1) PULL BAR CO-12 #14 CLEAR ANODIZED (KAWNEER)
- (1) PARALLEL ARM CLOSER LCN 4040 (KAWNEER)
- (1) THRESHOLD-HDCP, ACCESSIBLE
- (1) WEATHERSTRIPPING AND SWEEP

HARDWARE SET NO. 2

- (6) HINGES 4.5 X 4.5 NRP (BRASS) US260 (KAWNEER)
- (1) DEADLOCK MS-1850S (ADAMS RITE)
- (1) EXTERIOR CYLINDER 1E74 X C181 X RP3 US260(BEST)
- (1) DEADLOCK LEVER; 4550MS WITH INTEGRAL EXIT INDICATOR (ADAMS RITE)
- (2) PUSH BARS CP-II #14 CLEAR ANODIZED (KAWNEER)
- (2) PULL BARS CO-12 #14 CLEAR ANODIZED (KAWNEER)
- (2) PARALLEL ARM CLOSERS LCN 4040 (KAWNEER)
- (1) THRESHOLD-HDCP, ACCESSIBLE
- (2) WEATHERSTRIPPING AND SWEEPS
- (1) CONTROLLER LOCKING SYSTEM

HARDWARE SET NO. 3

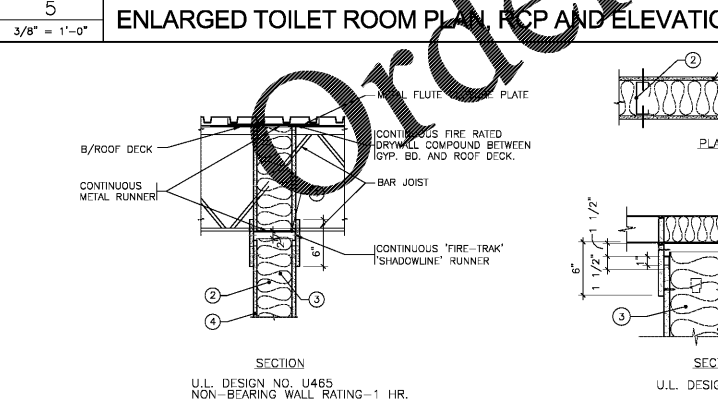
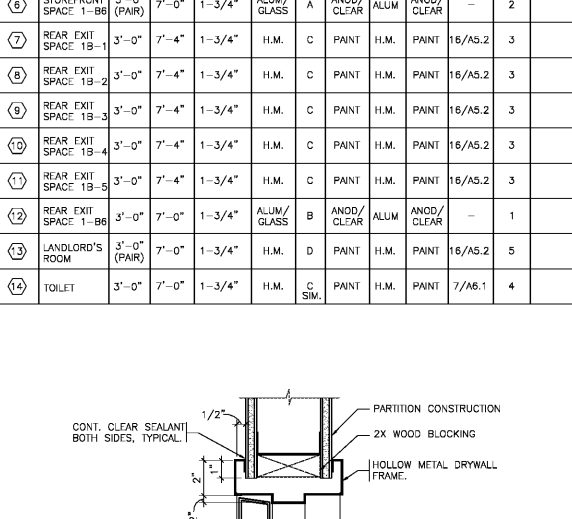
- (3) HINGES BB1191 4.5 X 4.5 NRP (BRASS) US320 (HAGER)
- (1) LOCKSET; 45H7AB-15H 626 (BEST)
- (1) PARALLEL ARM CLOSER DC2210 US260 (CORBIN RUSSWIN)
- (1) THRESHOLD 79A (DORBIN)
- (1) WEATHERSTRIPPING 399AN (DORBIN)
- (1) SWEEP 239AN (DORBIN)
- (1) LATCH GUARD LP1 US320 (GLYNN-JOHNSON)
- (1) PRE-FINISHED METAL EXTENDED DRIP CAP (RESEE MODEL NO. R201)

HARDWARE SET NO. 4

- (3) HINGES; BB1191, 4.5" X 4.5" (HAGER)
- (1) PRIVACY LOCKSET; AL405 SAT 626 (SCHLAGE)
- (1) WALL STOP 233W US260 (HAGER)
- (1) REGULAR ARM CLOSER DC3200 669 (CORBIN RUSSWIN)

HARDWARE SET NO. 5

- (6) HINGES BB1191 4.5 X 4.5 NRP (HAGER)
- (1) LOCKSET 35H7E-15H 626 (BEST)
- (1) PARALLEL ARM CLOSER DC2210 US260 (CORBIN RUSSWIN)
- (1) THRESHOLD 79A (DORBIN)
- (2) SWEEPS 239AN (DORBIN)
- (1) WEATHERSTRIPPING 399AN (DORBIN)
- (1) PRE-FINISHED METAL EXTENDED DRIP CAP MODEL NO. R201 (RESEE)
- (1) CONTROLLER LOCKING SYSTEM
- (1) ASTRAGAL
- (1) LATCH GUARD LP1 (US320) (GLYNN-JOHNSON)



GENERAL NOTES - DOOR SCHEDULE

- 'BEST' LOCKSETS INCLUDED AS A DESIGN REFERENCE. ACCEPTABLE MANUFACTURER OF EQUAL QUALITY INCLUDES SCHLAGE.
- ALL DOORS SHALL BE PROVIDED WITH HANDICAP ACCESSIBLE HARDWARE.
- ALL EXIT DOORS SHALL OPERATE WITHOUT THE USE OF A KEY FROM THE INSIDE OF THE BUILDING.
- BASE BID TO INCLUDE APPLIED ADDRESS/ SUITE NUMBERS ON FRONT AND REAR DOORS. VERIFY SIZE AND FONT TYPE WITH LOCAL AUTHORITIES.
- MAXIMUM DOOR OPENING FORCE TO BE 8.5 LBS. FOR EXTERIOR HINGED DOORS.
- ALL HOLLOW METAL DOOR FRAMES TO BE WELDED; NO KNOCK DOWN FRAME.

PARTITION TYPES

GENERAL NOTES

- TAPE, 'MUD' AND SAND ALL GYP. BD. SURFACES.
- PROVIDE CONTROL JOINTS AT 24"-0" O.C. MAX. SEE DETAIL 12/AS.2 FOR ADDITIONAL INFORMATION. ALIGN GYP. BD. CONTROL JOINTS WITH MASONRY CONTROL JOINTS.
- PROVIDE LEVEL 4 FINISH ON ALL GYP. BD. SURFACES.

MARK	LOCATION	DESCRIPTION
P-1	TOILET	5/8" USG FIBROCK BRAND AQUA-TOUGH GYP. BD. ON BOTH SIDES OF 3 5/8" 18 GA. METAL STUDS @ 16" O.C. WITH 1 1/2" MINERAL FIBER INSULATION BETWEEN STUDS AND 5/8" FIRE RETARDANT PLYWOOD OVERLAY ON LANDLORD'S ROOM SIDE. EXTEND PARTITION CONSTRUCTION TO 10'-0" AFF. 5/8" GYP. BD. ON ONE SIDE OF METAL STUDS AND INSULATION NOT REQUIRED AT SIM.
P-2	FURRED WALL	5/8" GYP. BD. ON ONE SIDE OF 1-1/2" METAL Z-FURRING STRIPS @ 16" O.C. WITH 1-1/2" POLYISOCYANURATE RIGID FOAM INSULATION. EXTEND PARTITION CONSTRUCTION FROM 1/FLOOR SLAB TO B/METAL ROOF DECK. INSULATION NOT REQUIRED AT SIM. PROVIDE 8'-0" HIGH 5/8" FIRE RETARDANT PLYWOOD WAINSCOT OVERLAY AT P-2.1.



ISSUED FOR BID AND PERMIT

Rev. No.	Description	Date
1	ISSUED FOR BID AND PERMIT	10/16/20

Salem Gate

RETAIL 1B

CONYERS, GEORGIA

ENLARGED TOILET ROOM PLAN, SCHEDULES AND DETAILS

Date: 10/16/20
Project No.: 20.062

Drawn: L.P.
By: H.Z.

Sheet No.: A6.1 (1)