

MASONRY TYPES

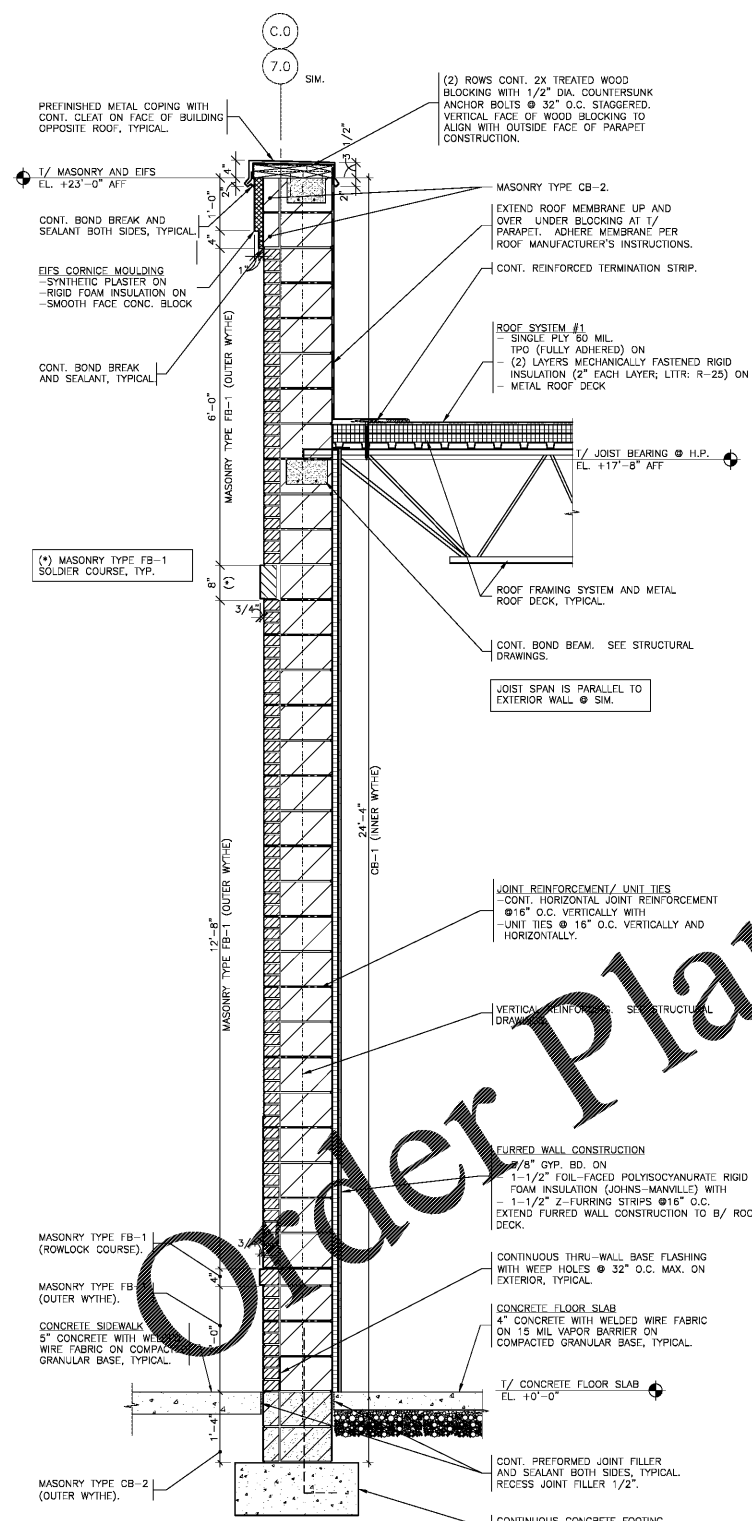
- CONCRETE BLOCK (CB)
 - TYPE CB-1: 12" STANDARD GREY, SMOOTH-FACE CONCRETE BLOCK (12"x8"x16" NOMINAL).
 - TYPE CB-2: 4" STANDARD GREY, SMOOTH-FACE CONCRETE BLOCK (4"x8"x16" NOMINAL).
 - TYPE CB-3: 6" STANDARD GREY, SMOOTH-FACE CONCRETE BLOCK (6"x8"x16" NOMINAL).
 - TYPE CB-4: 8" STANDARD GREY, SMOOTH-FACE CONCRETE BLOCK (8"x8"x16" NOMINAL).
 - TYPE CB-5: 10" STANDARD GREY, SMOOTH-FACE CONCRETE BLOCK (10"x8"x16" NOMINAL).
- FACE BRICK (FB)
 - TYPE FB-1: MODULAR BRICK
- MASONRY NOTES:
 1. PROVIDE FINISHED FACES ON EXPOSED SURFACES OF FACE BRICK.
 2. MORTAR JOINTS IN CMU TO BE STRUCK FLUSH; NOT TOOLED IN AREAS TO RECEIVE STUCCO FINISH.
 3. MASONRY COURSES BELOW 1/CONC. FLOOR SLAB TO BE GROUTED SOLID. SEE STRUCTURAL DRAWINGS.

ADHERED MANUFACTURED STONE VENEER SYSTEM

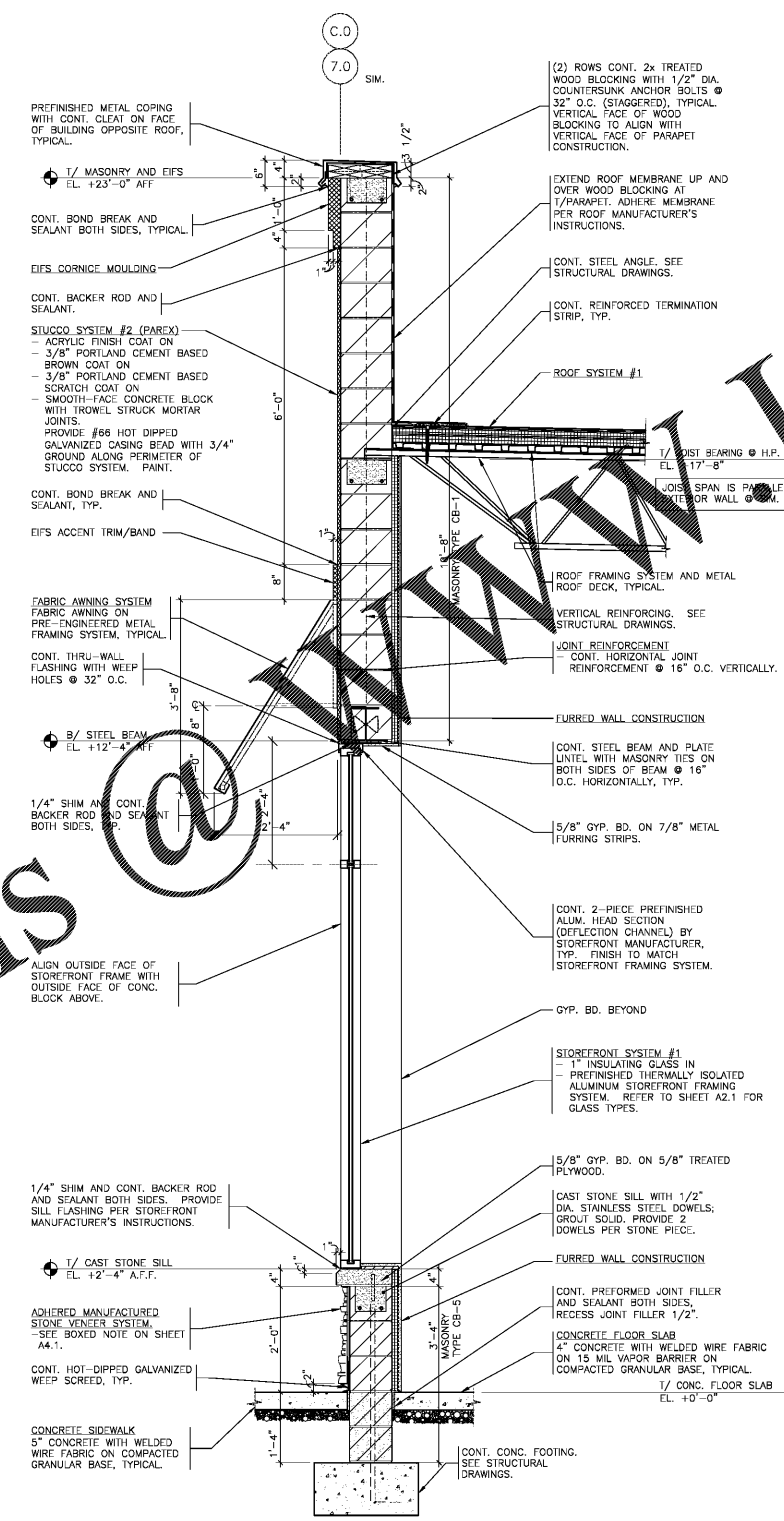
1. 1"-1 1/2" THICK MANUFACTURED DRYSTACK STONE VENEER (CLEAN AND BACK BUTTER -STONE WITH POLYMER MODIFIED MORTAR (MVS VENEER MORTAR BY LATIACRETE); 100% COVERAGE) ON
2. 1/2"x1/2" NOTCHED TROWEL POLYMER MODIFIED MORTAR PARGE COAT (MVS VENEER MORTAR BY LATIACRETE); 100% COVERAGE ON
3. MVS AIR AND WATER BARRIER (BY LATIACRETE); 100% COVERAGE ON
4. SMOOTH FACE CONCRETE.
5. PROVIDE 1"x3 1/2" CONT. HOT-DIPPED GALVANIZED WEEP SCREED AT BOTTOM OF STONE. OVERLAP SCREED FLANGE WITH MVS FLEXIBLE SEALING FLASHING TAPE (BY LATIACRETE). INSTALL SCREED PER MVA AND MANUFACTURER'S INSTRUCTIONS. SCREED MANUFACTURED BY NILES BUILDING PRODUCTS (800-323-3329).
6. PROVIDE CORNER UNITS ON MANUFACTURED ADHERED VENEER STONE.

GENERAL NOTES - MASONRY TIES

1. ALL TIES AND ANCHORS TO BE PROVIDED AND INSTALLED IN ACCORDANCE WITH THE REQUIREMENTS/GUIDELINES OF THE BRICK INDUSTRY ASSOCIATION.
2. ALL ACCESSORIES TO BE HOT-DIPPED GALVANIZED OR STAINLESS STEEL.
3. PROVIDE TIES @ 16" O.C. MAX. VERTICALLY AND HORIZONTALLY. PROVIDE 1/2 BRICK DEPTH MIN. TIE EMBEDMENT INTO MASONRY AND 5/8" MIN. MORTAR COVER FROM OUTSIDE FACE OF MASONRY TO EDGE OF TIE.
4. REFER TO SPECIFICATIONS FOR ADDITIONAL REQUIREMENTS.

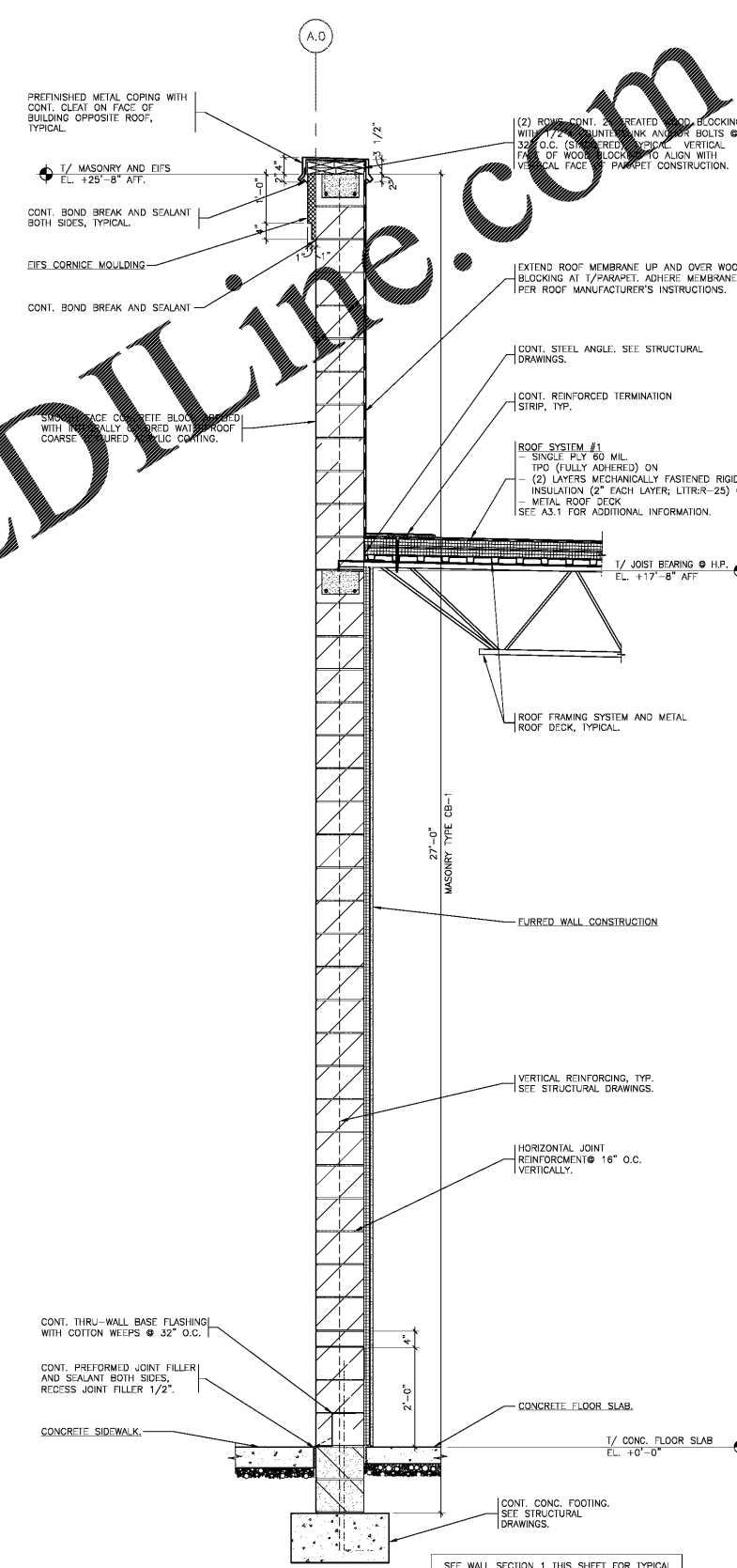


1 WALL SECTION
3/4" = 1'-0"



2 WALL SECTION
3/4" = 1'-0"

SEE WALL SECTION 1 THIS SHEET FOR TYPICAL CONSTRUCTION NOTES.



3 WALL SECTION
3/4" = 1'-0"

SEE WALL SECTION 1 THIS SHEET FOR TYPICAL CONSTRUCTION NOTES.



© 2020 D-Z-A ASSOCIATES, INC. THE PROJECT SHALL BE DEEMED THE AUTHORITY OF THESE DOCUMENTS ARE VALID FOR ALL CONSTRUCTION AND EXISTING AND OTHER WORK, INCLUDING CORRECTION.

Rev. No.	Description	Date
▲	ISSUED FOR BID AND PERMIT	10/16/20

Salem Gate Market
RETAIL 1B

CONYERS, GEORGIA
WALL SECTIONS

Date:	10/16/20	Drawn:	L.P.	Sheet No.:	A4.1
Project No.:	20.062	App'd:	H.Z.		(1)