

D.Z.A.
ASSOCIATES, INC.
ILL. REG. # 104-001714
2625 Butterfield Road Suite 233N
Oak Brook, Illinois 60523
Phone 630-520-1020 www.dzab.com

© 2019 D.Z.A. ASSOCIATES, INC.
THE ARCHITECT SHALL BE DEEMED THE AUTHOR OF THESE DOCUMENTS AND SHALL BE RESPONSIBLE FOR ANY REVISIONS AND OTHER MATTER, INCLUDING EQUIPMENT.

Rev. No.	Description	Date
▲	ISSUED FOR BID AND PERMIT	03/29/19
▲	ISSUED FOR BID	05/30/19
▲	RE-ISSUED FOR BID AND PERMIT	10/16/20

ELECTRICAL GENERAL SCOPE:

-FURNISH/INSTALL ALL MATERIALS, LABOR, INSTALLATION IN ORDER TO BE OPERATIONAL. ALL MATERIAL AND WORK SHALL BE CODE COMPLIANT; DEVICES/COVERPLATES COLOR SHALL BE IVORY; SEE BELOW FOR FURTHER DETAILS.

PIPING/WIRING TYPES:

- WHEN MEANS OF POWER IS CURRENTLY CONCEALED AND/OR TYPICALLY CONCEALED IN NEW WALLS AND/OR ABOVE SUSPENDED CEILINGS, CODE COMPLIANT MC CONDUITING/DISTRIBUTION OF POWER IS ACCEPTABLE.
- WHEN CONDUITING IS CURRENTLY INSTALLED IN EXPOSED CEILING AREAS, SIMILAR TYPE OF EMT PIPE/WIRING SHALL BE UTILIZED AND MOUNTED SURFACE MOUNTED; OTHERWISE 3/4" EMT PIPING IS STANDARD AT EXPOSED DECKS.
- WHEN NEW DATA OUTLETS ARE CALLED FOR, EMPTY 3/4" EMT PIPING, MID RING OR CUT-IN BOXES SHALL BE UTILIZED WITH PULLSTRINGS.
- WHEN NEW DROPS ARE CALLED AT SALES, 3/4" EMT PIPING SHALL BE UTILIZED FOR BOTH DATA AND POWER DROPS.
- DEVICE AND COVERPLATE COLOR AT OFFICE AREA/FLUSH MOUNTED DEVICES IN NEW OYP WALLS: IVORY
- DEVICE AND COVERPLATE COLOR AT WAREHOUSE, ELECTRICAL/DATA ROOM, PRODUCT PREP, SALES FOR SURFACE MOUNTED DEVICES: INDUSTRIAL
- ALL VERTICAL CONDUITING SHALL BE RUN TIGHT AT BOTTOM OF BAR JOISTS. PROVIDE OFFSETS AS REQUIRED. COORDINATE WITH OTHER MEP DESIGNS AND TRADES.

SERVICE:

- NEW TYPE WRITTEN PANEL BOARD LABELINGS, PLACARDS, ETC. AT ALL PANELS.
- NEW PANELS, PIPING, WIRING AS REQUIRED TO MEET INTENT OF THIS MEP SCOPE.
- PROVIDE NEW IVSS UNIT FOR EACH PANEL. PROVIDE EITHER AN APC SURGE SUPPRESSOR, PAZ SERIES OR SQUARE D IN SIZING/TYPES APPROPRIATE TO EACH PANEL BOARD.
- LOCK OFF BREAKER HAPPS AS DIRECTED BY NTE CONSTRUCTION MANAGER.

LIGHTING EQUIPMENT PACKAGE/DESCRIPTION AND WORK:

NTE SPECIFIED LIGHT FIXTURES FURNISHED AND INSTALLED BY G.C.

- 2X4 LED LAY-IN TROFFER LIGHTS
- EMERGENCY LIGHTS
- EXIT LIGHTS
- EMERGENCY/EXIT LIGHTS WITH REMOTE HEAD
- LED RECESSED CAN LAMPS INCLUDED AND LED SPOT FIXTURES (ENTRY AREA)
- CEILING FAN CONTROLS
- CHAIN HUNG LED STRIP LIGHT FIXTURES
- LED WALL PACK LIGHT
- WALL MOTION DETECTORS
- LED HI BAY LIGHTS

ELECTRICAL CONTRACTOR SHALL BE RESPONSIBLE TO RECEIVE, OFFLOAD, COUNT, NOTE & REPORT ANY DAMAGE TO SUPPLIER WITHIN 24 HOURS OF RECEIPT, STORE & SECURE UNDER LOCK & KEY DURING PROJECT.

-ELECTRICAL CONTRACTOR SHALL FURNISH/INSTALL ALL PIPING/BREAKERS, MATERIALS, CONNECTIONS ETC, AS NECESSARY TO CREATE A FULLY OPERATIONAL AND CONTROLLABLE LIGHTING SYSTEM.

-CONTROL OF OPS OFFICE AND BREAKROOM LIGHTING SHALL BE VIA NE WALL SWITCH. ELECTRICAL CONTRACTOR TO FURNISH/INSTALL ALL SWITCHED CONTROLS.

-ELECTRICIAN SHALL INSTALL NEW LIGHTING WITHIN SALES AREA. ELECTRICIAN SHALL FURNISH/INSTALL ALL ASSOCIATED WIRING, CONDUIT AND BOSES REQUIRED FOR INSTALLATION. ROUTE WIRING FROM DESIGNATED PANELBOARD THROUGH LIGHTING CONTROL PANEL (BY OTHERS) IN --- ROOM. DO NOT ROUTE NIGHT LIGHT CIRCUITS THROUGH LIGHTING CONTROL PANEL.

MISCELLANEOUS/GENERAL POWER:

- FURNISH/INSTALL POWER AND DATA DROPS INDICATED ON ELECTRICAL POWER PLAN WITHIN SALES AREAS.
- FURNISH/INSTALL MISC. POWER AND DATA OUTLETS IN BREAK ROOM
- FURNISH/INSTALL NEW POWER AND DATA DROPS TO NEW CASHWRAP LOCATIONS IN SALES (1) DATA AND 1 POWER CONNECTION PER CASHWRAP; 3/4" EMT WITH PULL STRING; FURNISH (2) DUPLEX RECEPTACLES ON A DEDICATED 20A CIRCUIT PER CASHWRAP.
- FURNISH/INSTALL (4) QUAD OUTLETS ALONG STOREFRONT WALL CONNECT TO (2) DEDICATED CIRCUITS AS INDICATED ON PLAN.
- FURNISH/INSTALL (1) DATA BOX ALONG STOREFRONT WALL. PROVIDE 3/4" CONDUIT TO DECK.
- FURNISH/INSTALL (1) DUPLEX ABOVE HIM EXIT DOOR AT 90° AFF ON DEDICATED 20A CIRCUIT. PROVIDE FOR WIRING OF PUSHBAR HARDWARE PER MANUFACTURERS REQUIREMENTS.

- FURNISH/INSTALL NEW POWER AND HOOKUP TO NEW FORKLIFT CHARGER (BY OTHERS)
- FURNISH/INSTALL NEW POWER TO NEW SECURITY PEDESTALS (BY OTHERS)
- FURNISH/INSTALL NEW POWER TO NEW CHARGING BAY (BY OTHERS)
- FURNISH/INSTALL NEW POWER AND HOOKUP TO NEW SLIDING DOORS (BY OTHERS)
- FURNISH/INSTALL NEW POWER AND HOOKUP TO NEW CASHWRAP/POWER POLES (BY OTHERS)
- FURNISH/INSTALL NEW POWER AND HOOKUP TO NEW DUMPSTER COMPACTOR (BY OTHERS)
- FURNISH/INSTALL NEW POWER AND HOOKUP TO OVERHEAD DOORS (BY OTHERS) INCLUDING KEYSWITCH CONTROLS (BY OTHERS)
- FURNISH/INSTALL NEW POWER AND HOOKUP TO AIR COMPRESSOR (BY OTHERS)

EXHAUST MOTORS:

- BATHROOM: WIRE FOR 24/7 OPERATION
- PRODUCT PREP: WIRE THROUGH RJB RELAY FOR CONTROL WITH ROOM LIGHTS.

NTE BUILDING SIGNAGE:

-PROVIDE DEDICATED 120V/20A CIRCUIT FOR NEW SIGNAGE. SEE PERMITTED SIGNAGE DRAWINGS FOR LOCATIONS. PROVIDE CONNECTION TO ALL NTE ILLUMINATED SIGNS. SIGNS CONTROLLED VIA EMS CLIENT SYSTEM.

NEW AUTOMATIC SLIDING DOORS/OH DOORS:

- FURNISH/INSTALL DEDICATED "EMERGENCY" POWER TO NEW AUTOMATIC SLIDING DOOR SYSTEMS. MAKE CONNECTIONS FOR FULL OPERATION FUNCTIONALITY OF DOORS INCLUDED WITHIN THIS SCOPE. SEE REVISED ADJUSTMENTS AND TRAINING OF NTE STORE MANAGEMENT OF DOOR SYSTEM BY A DESIGNATED TECHNICIAN.
- FURNISH/INSTALL DEDICATED "EMERGENCY" POWER TO OPERATIONS NEW OH DOORS AT ENTRY/ EXTERIOR DOOR (LOADING DOOR)
- FURNISH AND INSTALL DEDICATE POWER TO NEW OH COILING DOOR. MAKE CONNECTIONS FOR FULL OPERATION FUNCTIONALITY. AT ENTRY OH DOOR, INSTALL EMT PIPING FOR KEY SWITCH CONTROL ON EXTERIOR SIDE OF WALL.

NEW RIUS:

- WIRE NEW DUCT DETECTORS. PROVIDE PIPE AT WALLS AS REQUIRED. REFER TO MECHANICAL SPECIFICATION.
- FURNISH/INSTALL NEW BOXES, MID RINGS, EMT CONDUIT WITH PULL STRING AS REQUIRED FOR NEW THERMOSTATS AND/OR SENSORS FOR EACH RIU. PROVIDE AND CALLED BY ONS UNDER CONTRACT TO G.C. SEE ARCHITECTURAL POWER PLAN AND ELECTRICAL SPECIFICATIONS.
- PROVIDE NEW ELECTRICAL STRIPS AT ALL RIUS INCLUDING ALL CONDUIT, WIRING, CONNECTIONS, PENETRATIONS, DEVICES, ACCESSORIES, ETC. AS REQUIRED FOR FULLY OPERATIONAL SYSTEM.
- FURNISH/INSTALL NEW 4" SQUARE BOXES AT 4'-0" AFF FOR REMOTE SENSORS. PROVIDE 3/4" CONDUIT FROM BOXES TO DECK WITH 1/2" CLEARANCE. SEE MECHANICAL PLANS FOR LOCATIONS.

NEW SECURITY PEDESTALS:

-SC. SAW CUT UNDERGROUND ELECTRICAL PIPING REQUIRED. SEE ARCHITECTURAL PLANS FOR LOCATIONS OF ENTRY PEDS.

PRIVATE WASH STATIONS:

- FURNISH AND INSTALL (1) NEW COMBINATION OF MET RATED ELECTRICAL DEVICES AT EXTERIOR WALL LOCATION. EACH COMBINATION SHALL CONSIST OF (1) 120V/20A 5-20R DEVICE AND (1) 208V/1P/30A 6-30R DEVICE.

CEILING FANS:

- INSTALL ALL NEW CEILING FANS AND CONTROLS. INSTALL CEILING FANS TO DECK.
- BLADE TIP POINT UP, WIRED TO BLOW DOWN.

FIRE ALARM SYSTEMS:

-PROVIDE DESIGN SERVICE, FURNISH/INSTALL ALL COMPONENTS, OBTAIN ALL APPROVALS. CONTRACTOR IS RESPONSIBLE FOR CODE COMPLIANCE.

-FIRE ALARM SYSTEM TO MEET CODE COMPLIANCE. FURNISH/INSTALL NECESSARY DEVICES, CONDUITS, BOXES, ETC. AS REQUIRED BY CODE.

-INSTALL ALL FA DEVICES IN COORDINATION WITH ARCHITECTURAL FIXTURE PLAN/MERCHANDISE RACK LAYOUT.

-FURNISH/INSTALL NEW VERTICAL EMT AND BOXES AS REQUIRED.

-FURNISH/INSTALL ANY/ALL NECESSARY WIRING, CONNECTIONS, RELAYS, INTERFACES ETC. TO PLANNED EGRESS PUSH BARS AS MAY BE REQUIRED FOR CODE COMPLIANCE AND/OR REQUIRED BY THE FIRE MARSHAL. SEE ARCHITECTURAL PLANS.

-FURNISH/INSTALL ANY/ALL NECESSARY WIRING, CONNECTIONS, RELAYS, INTERFACES, ETC. TO DUCT SMOKE DETECTORS AT RIUS AS MAY BE REQUIRED FOR CODE COMPLIANCE AND/OR REQUIRED BY THE FIRE MARSHAL. SEE MECHANICAL PLANS FOR RIU LOCATIONS.

-FINAL FIRE ALARM SYSTEM MUST BE ABLE TO BE MONITORED BY NTE'S MONITORING VENDOR, TRANS ALARM. CONTRACTOR IS RESPONSIBLE FOR COORDINATING AND ASSISTING TRANS ALARM WITH SETTING UP MONITORING SERVICES WITH LOCAL FIRE DEPARTMENT.

-NOTIFY NTE OF ANY REQUIRED CHANGES TO PHONE LINES/CONNECTIONS.

-INSTALLING CONTRACTOR TO PROGRAM FIRE ALARM PANEL.

NTE FA SYSTEM CRITERIA/STANDARDS:

(NOTE: BELOW IS IN ADDITION TO PROJECT PLANS, PLAN SPECIFICATIONS AND/OR CODE REQUIREMENTS)

1. FURNISH/INSTALL SPECIFIED EQUIPMENT LIST PER BELOW. QUANTITIES OF DEVICES MAY VARY BASED UPON LOCAL AHJ, LOCAL CODES, LOCAL DESIGN REQUIREMENTS, ETC. HOWEVER THE ESSENTIAL EQUIPMENT LIST PROVIDES THE BASIC INTENT OF THE EQUIPMENT TO BE UTILIZED.
2. FURNISH/INSTALL THE FA SYSTEM TO MEET ALL CODE REQUIREMENTS, LOCAL AHJ REQUIREMENTS, NTE FA SYSTEM REQUIREMENTS AND BEST INDUSTRY PRACTICES.
3. FURNISH/INSTALL EQUIPMENT AND FA SYSTEM WHICH IS NON-PROPRIETARY. SEE EQUIPMENT TYPES LISTED BELOW.
4. FURNISH ALL ASSOCIATED TESTS, PERMITS, INSPECTIONS, LABOR, MATERIAL, TAXES, ETC. TO INSTALL A COMPLETE OPERATIONAL FA SYSTEM.
5. FURNISH/INSTALL (1) FA PANEL AT PRESCRIBED LOCATION. SEE PROJECT PLANS.
6. FURNISH/INSTALL "DECK CEILING MOUNT" TYPE HORN/STROBE DEVICES AT ALL OPEN/EXPOSED STRUCTURE AREAS. (SEE PLANS)
7. FURNISH/INSTALL SURFACE MOUNTED 3/4" EMT VERTICAL PIPING FOR FA WIRING TO ALL PULL STATION DEVICES WITHIN EXPOSED DECK/STRUCTURE AREAS (E - TYPICALLY SALES, WAREHOUSE, PRODUCT PREP, AND ELECTRICAL/DATA ROOMS). ALL FA DEVICES LOCATIONS AT WALLS MUST BE COORDINATED WITH NORTHERN TOOL'S PLANS. SEE PROJECT'S NTE FIXTURE PLAN. DEVICES INSTALLED IN ERROR BEHIND PLANNED FIXTURE LOCATIONS WILL BE RELOCATED BY THE FA INSTALLER AT NO CHARGE.
8. FURNISH/INSTALL CONCEALED PIPING AND BOXES FOR FA WIRING TO ALL PULL STATIONS/DEVICES WITHIN AREAS/ROOMS HAVING SUSPENDED CEILINGS (E - TYPICALLY OPERATIONS OFFICE, BREAK ROOM, HALLWAY, BATHROOMS).
9. FURNISH/INSTALL PLENUM RATED FA SYSTEM WIRING. ALL HORIZONTAL WIRING WORK WITHIN EXPOSED DECK AREAS/ROOMS SHALL BE NEATLY INSTALLED RUNNING PARALLEL TO BEAM AND BAR JOISTS, BE WRAPPED AND SECURED APPROPRIATELY.
10. FURNISH/INSTALL/INTERFACE THE FA PANEL WITH NEW TAMPER/LOW RISER SWITCHES.
11. FURNISH/INSTALL INTERFACING BETWEEN FA PANEL AND NEW 15 SECOND DELAY EGRESS PUSHBARS. VST SITE AND SEE PROJECT PLANS.
12. FURNISH/INSTALL INTERFACING BETWEEN FA PANEL AND NEW RIU DUCT DETECTORS. SEE PROJECT PLANS AND/OR CONTACT THE GC FOR FURTHER MEP INFORMATION.
13. FURNISH/INSTALL FA SYSTEM COMPONENTS HAVING UL RATING.
14. FA INSTALLER MUST BE A "UL CERTIFIED" INSTALLER.
15. FURNISH/INSTALL ALL MISCELLANEOUS PHONE CABLEING, PHONE JACK(S), PUNCH DOWNS, ETC. FROM FA PANEL TO THE DESIGNATED PHONE BLOCK/LINE PHONE NUMBER POINT (RESPONSIBILITY OF THE FA INSTALLER). WILL ONLY PROVIDE THE FIRE PHONE LINE/LINE PHONE LINE AT THE DESIGNATED CONNECTION POINT (FROM LOCAL WOOD EQUIPMENT BOARD).
16. FURNISH/INSTALL FA SYSTEM COMPLETE AND OPERATIONAL, INCLUDING MISCELLANEOUS AND INCIDENTAL INTERFACING CONNECTIONS, DEVICES ETC.
17. FA INSTALLER TO COORDINATE, COOPERATE AND ASSIST TRANS ALARM (NATIONWIDE MONITORING VENDOR) REQUIRED UNTIL FA PANEL/SYSTEM HAS ESTABLISHED MONITORING IN PLACE WITH TRANS ALARM AND LOCAL FIRE DEPARTMENT AS REQUIRED.
18. PROGRAMMING OF FA PANEL IS RESPONSIBILITY OF THE FA SYSTEM INSTALLER.
19. ELECTRICIAN TO PROVIDE (1) DEDICATED 120V/20A CIRCUIT TO CONNECTION POINT.

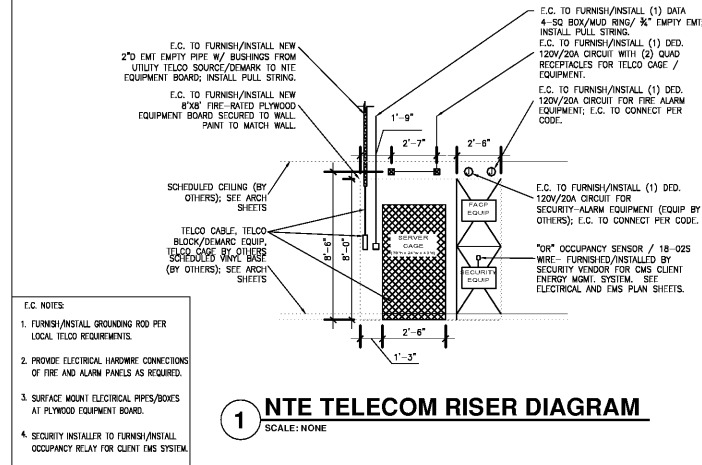
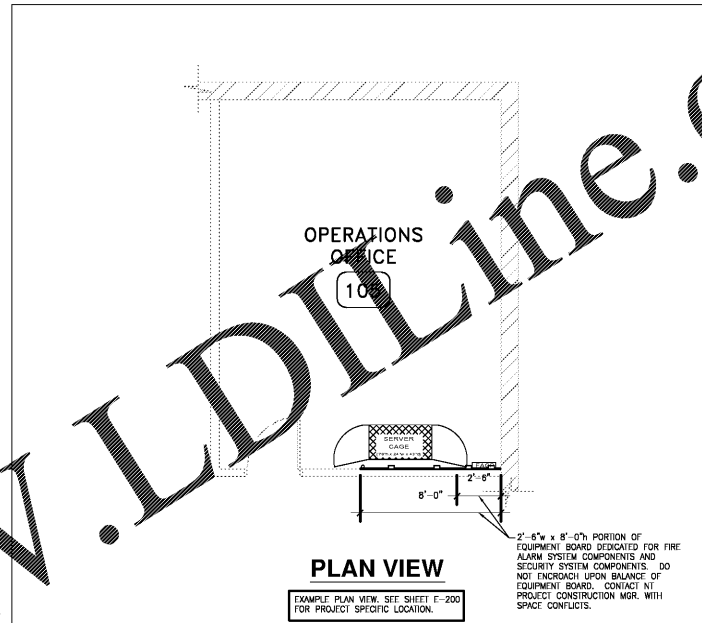
QUANTITY	DESCRIPTION
1	INSTA-1208P: STATION MOUNTABLE, SIBOR ALPHA KEYPAD
1	SYSTEM SENSOR - FIRE PE SMOKE DETECT 13 SERIES
12	VPEX ADAPTER: UL FIRE & BURGLAR ZONES FOR BURGLAR
4	TRITITE: 50A/2 DUAL ACTION/EXPLAN MANUAL PULL STATION
2	ADDRESSABLE RELAY MODULE
6	SYSTEM SENSOR CEILING STROBE STANDARD CD
6	SYSTEM SENSOR CORNER CEILING STROBE STANDARD CD
5	SYSTEM SENSOR 2" FIRE HORN/STROBE STANDARD CD
6	RISER SYSTEM SENSOR REMOTE STATION FOR DUCT DETECTOR
2	12 VOLT AMP BATTERY
1	SILENT NIGHT 5Amp/300W POWER SUPPLY
6	SYSTEM SENSOR STATION ANDOLA WHITE
1	UL LISTED PROTECTION CASE PROTECTOR K2(AC AND PHONE)
1	UL BATTERY, 12V/20AH, PW-1212

ADDITIONAL PHONE JACKS OR DEDICATED PHONE LINES

ADDITIONAL PULL STRINGS

ADDITIONAL DEVICES REQUIRED BY LOCAL AHJ

PLANNED PLAYS FOR FIRE AND SUPERVISORY DEVICES



Official Plans

Salem Gate Market

NORTHERN TOOL + EQUIPMENT

ANCHOR 2B
1454 OLD SALEM ROAD
CONYERS, GEORGIA

ELECTRICAL DETAILS

Date:	Drawn by:	Sheet No.:
03/29/19	AK	E-400
Project No.:	Rev.:	AR
18.112		