

D.Z.A.
ASSOCIATES, INC.

ILL. REG. # 104-001714 Suite 233N
2625 Butterfield Road 60523
Oak Brook, Illinois
Phone: 630-220-1020 www.dzanh.com

© 2019 D.Z.A. ASSOCIATES, INC.
THE ARCHITECT SHALL BE DEEMED THE AUTHOR OF THESE DOCUMENTS AND SHALL BE RESPONSIBLE FOR ANY REVISIONS AND CORRECTIONS TO THESE DOCUMENTS.

No.	Description	Date
▲	ISSUED FOR BID AND PERMIT	03/29/19
▲	ISSUED FOR BID	05/30/19
▲	RE-ISSUED FOR BID AND PERMIT	10/16/20

GENERAL NOTES

1. ALL INSTALLATIONS, EQUIPMENT AND MATERIAL SHALL COMPLY WITH ALL APPLICABLE TENANT REQUIREMENTS.
2. CONTRACTOR IS RESPONSIBLE FOR HAVING A THOROUGH KNOWLEDGE OF ALL DRAWINGS, SPECIFICATIONS, EXISTING CONDITIONS AND LANDLORD CRITERIA FOR BIDDING PURPOSES. FAILURE TO ACQUAINT THEMSELVES WITH THIS KNOWLEDGE DOES NOT RELIEVE THE RESPONSIBILITY OF PERFORMING THEIR WORK PROPERLY.

PLUMBING KEYNOTES

- ① FURNISH AND INSTALL NEW GAS METER. SEE "GAS LOAD AND SIZING SUMMARY" THIS SHEET. FIELD VERIFY EXACT LOCATION, SIZE AND PRESSURE PRIOR TO BID. NOTIFY THE PROJECT MANAGER OF ANY NECESSARY MODIFICATIONS AND INCORPORATE THEM INTO THE ORIGINAL BID. NO EXCEPTIONS. PAINT EXPOSED GAS PIPING, VERIFY COLOR WITH ARCHITECT. COORDINATE ALL REQUIREMENTS WITH LOCAL UTILITY PRIOR TO BID.
- ② FURNISHED AND INSTALL ROOF PIPE SUPPORT PER DETAIL 3/P300.
- ③ FURNISH AND INSTALL GAS PIPING ON ROOF. COORDINATE ALL ROOF PENETRATIONS WITH APPROVED ROOFING CONTRACTOR.
- ④ SHUT-OFF VALVE, 4" DRY LEG, PRESSURE REGULATOR & UNION AT EQUIPMENT CONNECTION, SEE DETAIL 4/P300. FIELD VERIFY CONNECTION TO EQUIPMENT, MODIFY PIPING AS REQUIRED. FIELD VERIFY EXACT LOCATION, SIZE AND PRESSURE PRIOR TO BID. PAINT GAS PIPING ON ROOF SAFETY YELLOW. COORDINATE ALL REQUIREMENTS WITH LOCAL UTILITY PRIOR TO BID.

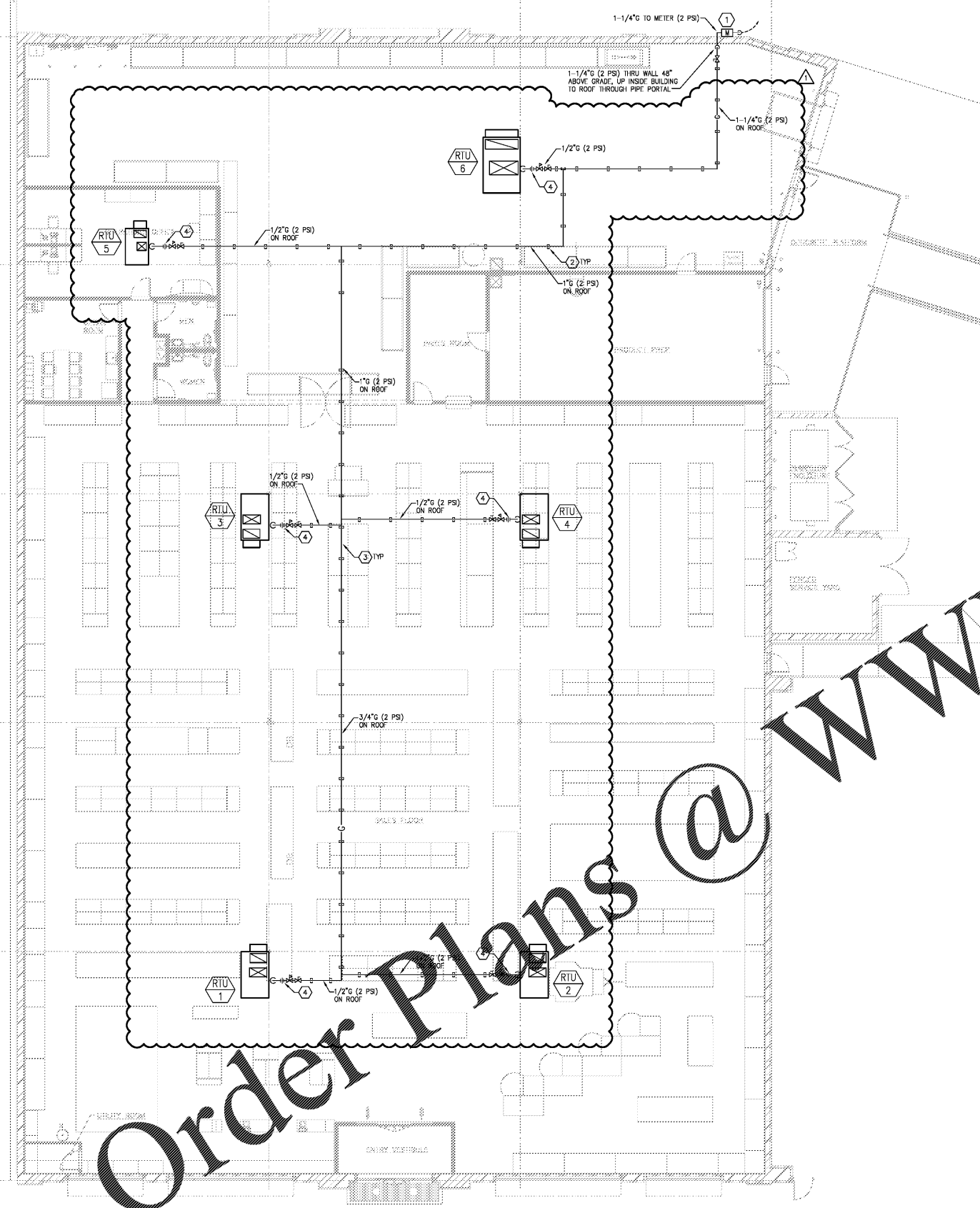
NOTE: REFER TO SHELL BUILDING DRAWINGS FOR ADDITIONAL AND SUPPLEMENTAL INFORMATION/REQUIREMENTS

GAS LOAD AND SIZING SUMMARY:

1. LOAD SUMMARY:
RTU-1,2,3,4,5,6 = 1,150 MBH
TOTAL = 1,150 MBH

2. PIPE SIZING SUMMARY:
• 2.0 PSI INLET PRESSURE
• 1.0 PSI PRESSURE DROP
• 300 FT TOTAL EQUIV. LENGTH
• IFGC TABLE 402.4(S) SCHEDULE 40 METALLIC PIPE IS USED.

3. CONTRACTOR TO VERIFY PRESSURE AND LENGTHS ON SITE AND ADJUST PIPE SIZES IN ACCORDANCE WITH IFGC CHAPTER 4.



Order Plans @ WWW.LDILine.com

1 PLUMBING PLAN - GAS
1/8" = 1'-0"

Salem Gate Market

NORTHERN
TOOL +
EQUIPMENT



ANCHOR 2B
1454 OLD SALEM ROAD
CONYERS, GEORGIA

PLUMBING GAS PLAN