

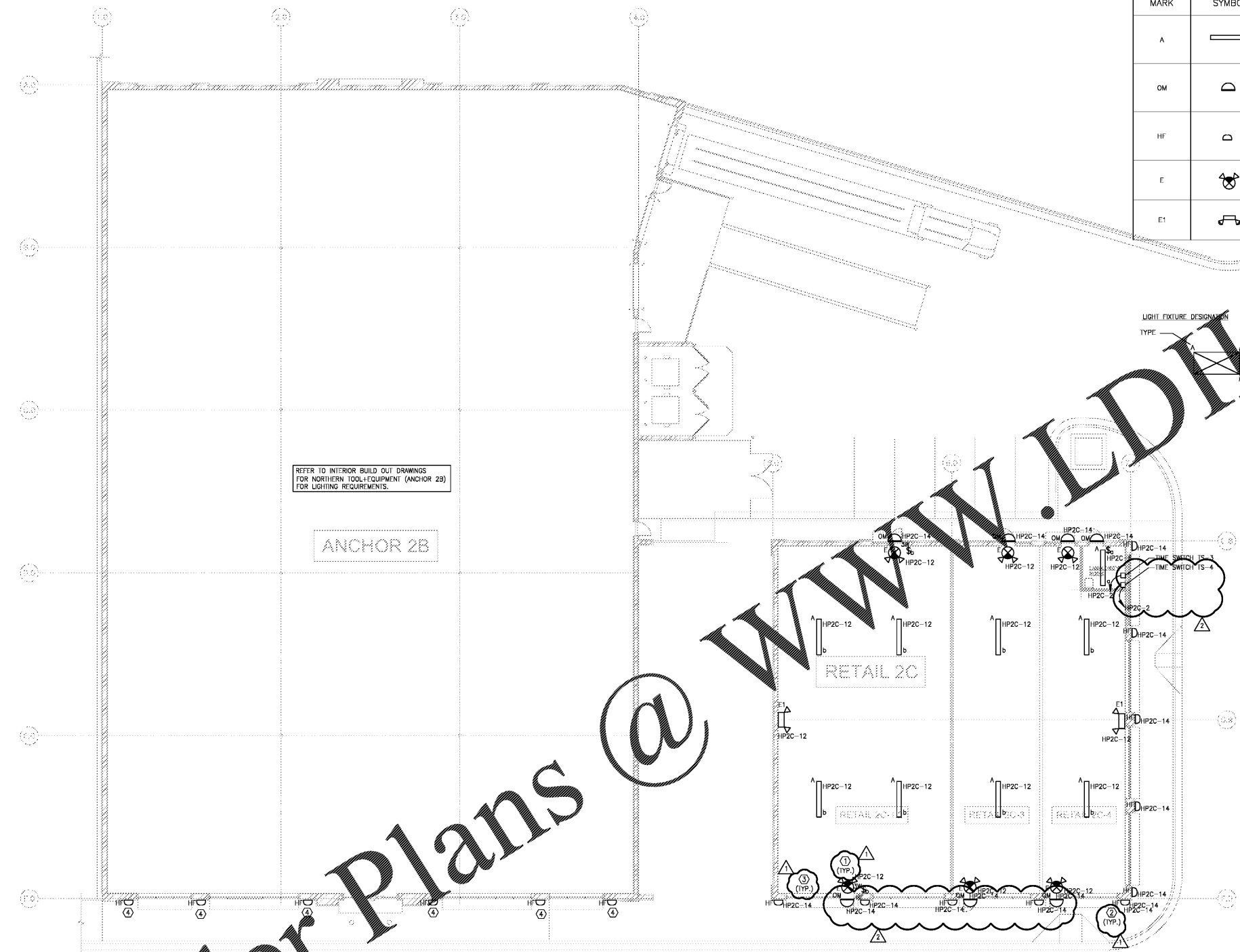
D-Z-A
ASSOCIATES, INC.

ILL. REG. # 104-001714
2625 Butterfield Road Suite 233N
Oak Brook, Illinois 60523
Phone 630 239 1020 www.dzarch.com

© 2019 D-Z-A ASSOCIATES, INC.
THE ARCHITECT SHALL BE DEEMED THE AUTHOR OF
THIS DOCUMENT AND SHALL BE RESPONSIBLE FOR
REVISIONS AND OTHER MATTERS, INCLUDING COPYRIGHTS.

Rev. No.	Description	Date
▲	ISSUED FOR BID AND PERMIT	03/29/19
▲	ISSUED FOR BID	05/30/19
▲	ADDENDUM #1	07/09/19
▲	RE-ISSUED FOR BID AND PERMIT	10/16/20

LIGHTING LEGEND			
MARK	SYMBOL	DESCRIPTION	COMMENTS
A	—	1x8 LED STRIP LIGHT EATON SNLFD BASE; 49.7W OR EQUIVALENT	IN OPEN AREA
OM	D	WALL SCENE LED LITHONIA LIGHTING 20W; MRW LED-P2-30K-SR4-120-E10W1	EXTERIOR
HF	D	WBRO6/D154-FS18 FLUORESCENT DYNAMIC LIGHTING; 42W; DOWNLIGHT SCENGE	12'-0" A.F.F. EXTERIOR
E	⊗	LITHONIA LIGHTING LIQOM LED EXIT/EMERGENCY SIGN; FACE: 4.3W; HEADS: 1.5W EACH	EXTERIOR DOOR ILLUMINATION
E1	⊕	LED EMERGENCY LIGHT LITHONIA LIGHTING ELM2 LED; HEADS 1.5W EACH	MONITOR WALL



1 LIGHTING PLAN - ANCHOR 2B
SCALE: 1/8" = 1'-0"

2 LIGHTING PLAN - RETAIL 2C
SCALE: 3/32" = 1'-0"

GENERAL NOTES:

- CONTRACTOR SHALL COORDINATE ALL ELECTRICAL CONSTRUCTION WITH OTHER TRADES TO AVOID CONFLICTS.
- CONTRACTOR SHALL VERIFY THERE IS NO OVERLOADING OF BRANCH CIRCUITS AND/OR PANEL BOARD REGARDLESS OF CIRCUITRY INDICATED.
- CONTRACTOR SHALL VERIFY EXTERIOR LIGHTING IS IN COMPLIANCE WITH LOCAL ORDINANCES. CONSULT OWNER/ARCHITECT FOR ALTERNATE FIXTURE.

KEY NOTES:

- ALL EMERGENCY LIGHTS, EXIT/EMERGENCY SIGN, AND NIGHT LIGHTS SHALL BE CONNECTED AHEAD OF SWITCH.
- EXTERIOR LIGHTS SHALL BE CONNECTED TO HOUSE PANEL TIME SWITCH TS-3. TIME SWITCH SHALL FUNCTION ON A SCHEDULED BASIS USING TIME OF DAY WITH AN INDEPENDENT PROGRAM SCHEDULE THAT CONTROLS THE EXTERIOR LIGHTING.
- THE LIGHT SWITCH HEIGHT INCLUDING TOP OF COVER PLATE TO BE 4' A.F.F.
- LIGHT FIXTURES SHALL BE CONNECTED TO TENNY PANEL BOARD AFTER INSTALLATION.
- INTERIOR LIGHTS SHALL BE CONNECTED TO HOUSE PANEL TIME SWITCH TS-4. TIME SWITCH SHALL FUNCTION ON A SCHEDULED BASIS USING TIME OF DAY WITH AN INDEPENDENT PROGRAM SCHEDULE THAT CONTROLS THE INTERIOR LIGHTING.

Order Plans @ WWW.LDIDLINE.COM

Salem Gate Market

ANCHOR 2B
AND RETAIL 2C

1454 AND 1460
OLD SALEM ROAD
CONYERS, GEORGIA

ELECTRICAL LIGHTING PLAN

CRAY Ray Group Consulting Engineers, Inc.
1875 Powers Ferry Road
Building 80, Suite 100
Atlanta, Georgia 30339
Tel. (770) 953-1448
Fax. (770) 953-4923

Date:	3/29/19	Drawn by:	AK	Sheet No.:	E2.1
Project No.:	18.110	Checked by:	AR		(2)