

D·Z·A
ASSOCIATES, INC.

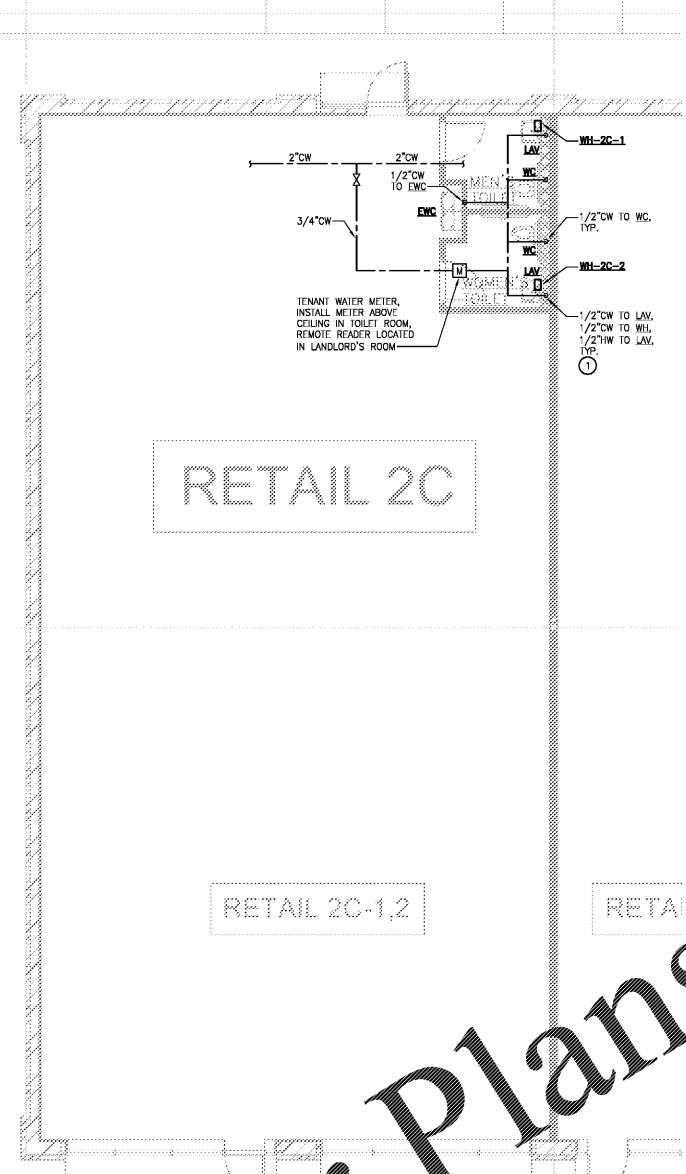
ILL. REG. # 104-001714 Suite 233N
2625 Butterfield Road Oak Brook, Illinois 60523
Phone 630 239 1020 www.dzarch.com

© 2019 D-Z-A ASSOCIATES, INC. THE ARCHITECT SHALL BE DEEMED THE AUTHOR OF THESE DOCUMENTS AND SHALL BE RESPONSIBLE FOR ANY REVISIONS AND OTHER RIGHTS, INCLUDING COPYRIGHT.

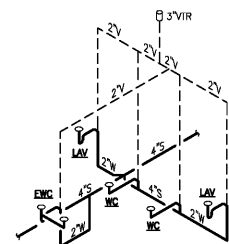
No.	Description	Date
▲	ISSUED FOR BID & PERMIT	03/29/19
▲	ISSUED FOR BID	05/30/19
▲	RE-ISSUE FOR BID & PERMIT	10/13/20

KEYED NOTES:

- ① PROVIDE ASSF 1070 TEMPERING VALVE, SET TO 110°F OUTLET, AT EACH LAVATORY.
- ② VENTS SHALL BE MIN 10'-0" FROM ANY OUTDOOR AIR INTAKE.

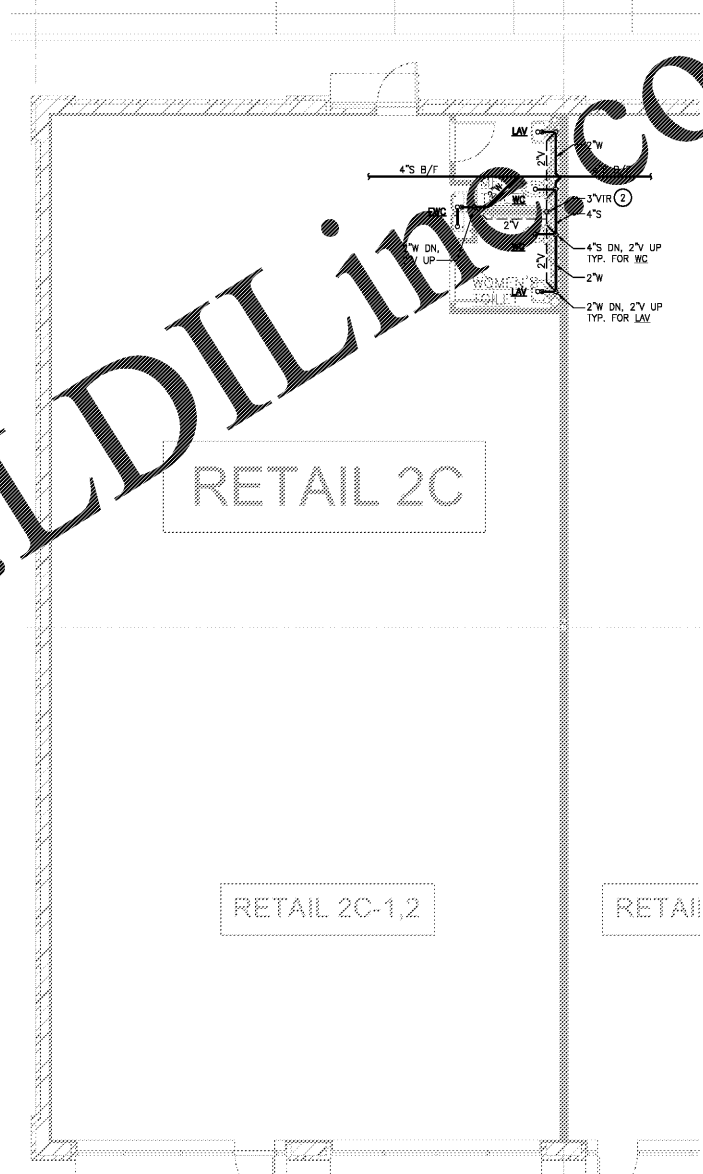


1 SUPPLY PLAN - RETAIL 2C-1.2
SCALE: 3/16" = 1'-0"



3 SANITARY RISER DIAGRAM - RETAIL 2C-1.2
SCALE: NO SCALE

PROVIDE SEPARATE LINE-ITEM COST PLUMBING WORK ASSOCIATED WITH WHITE BOXES FOR SPACE 2C-1.2.



2 SANITARY PLAN - RETAIL 2C-1.2
SCALE: 3/16" = 1'-0"

Order Plans @ www.LDILine.com

Salem Gate Market

ANCHOR 2B
AND RETAIL 2C
2C-1 WHITE BOX

1460-1
OLD SALEM ROAD
CONYERS, GEORGIA

PLUMBING SUPPLY PLAN AND
PLUMBING SANITARY PLAN,
SPACE 2C-1.2 WHITE BOX

CRAY Ray Group Consulting Engineers, Inc.
1877 Powers Ferry Road
Building 20, Suite 100
Atlanta, Georgia 30339
Tel. (770) 953-1448
Fax. (770) 953-8523

Date:	03/29/19	Drawn by:	MA	Sheet No.:	P7.1
Project No.:	18.110	Checked by:	KSM		(2)