

**D.Z.A.**  
ASSOCIATES, INC.

ILL. REG. # 104-001714  
2625 Butterfield Road Suite 233N  
Oak Brook, Illinois 60523  
Phone 630 239 1020 www.dzarch.com

© 2019 D.Z.A. ASSOCIATES, INC.  
THE ARCHITECT SHALL BE DEEMED THE AUTHOR OF  
THESE DOCUMENTS AND SHALL BE RESPONSIBLE FOR ANY  
REVISIONS AND OTHER MATTERS, INCLUDING COPYRIGHTS.

No.	Description	Date
▲	ISSUED FOR BID AND PERMIT	03/29/19
▲	ISSUED FOR BID	05/30/19
▲	RE-ISSUED FOR BID AND PERMIT	10/18/20

**GENERAL NOTES:**

1. ALL GAS PIPING SHALL BE INSTALLED WITHIN ROOF FRAMING SYSTEM.  
PAINT GAS PIPING ON ROOF SAFETY YELLOW. PAINT ALL OTHER EXPOSED GAS PIPING, VERIFY COLOR WITH ARCHITECT.

**KEYED NOTES:**

1. TENANT SHALL PROVIDE WATER METER, WITH REMOTE READER LOCATED IN LANDLORD'S ROOM.

**METER 2C-1**  
**GAS LOAD AND SIZING SUMMARY:**

1. LOAD SUMMARY:  
RTU-2C-1.2 = 200 MBH  
FUTURE = 800 MBH  
TOTAL = 1000 MBH

2. PIPE SIZING SUMMARY:  
• 2.0 PSI INLET PRESSURE  
• 1.0 PSI PRESSURE DROP  
• 200 FT TOTAL EQUIV. LENGTH  
• IFCC TABLE 402.4(S) SCHEDULE 40 METALLIC PIPE IS USED.

**METER 2C-3**  
**GAS LOAD AND SIZING SUMMARY:**

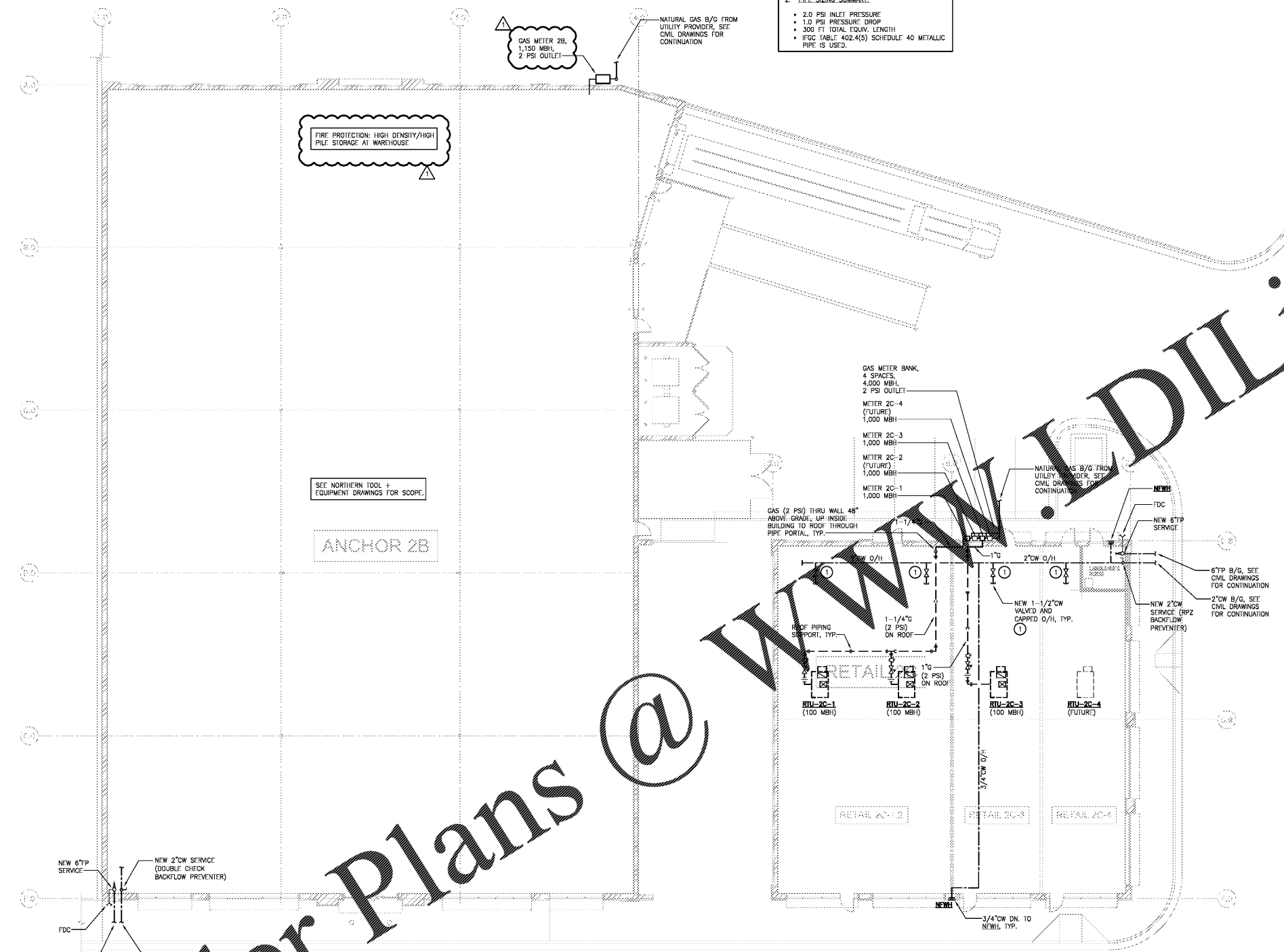
1. LOAD SUMMARY:  
RTU-2C-3 = 100 MBH  
FUTURE = 900 MBH  
TOTAL = 1000 MBH

2. PIPE SIZING SUMMARY:  
• 2.0 PSI INLET PRESSURE  
• 1.0 PSI PRESSURE DROP  
• 200 FT TOTAL EQUIV. LENGTH  
• IFCC TABLE 402.4(S) SCHEDULE 40 METALLIC PIPE IS USED.

**METER 2B**  
**GAS LOAD AND SIZING SUMMARY:**

1. LOAD SUMMARY:  
FUTURE = 1,150 MBH  
TOTAL = 1,150 MBH

2. PIPE SIZING SUMMARY:  
• 2.0 PSI INLET PRESSURE  
• 1.0 PSI PRESSURE DROP  
• 300 FT TOTAL EQUIV. LENGTH  
• IFCC TABLE 402.4(S) SCHEDULE 40 METALLIC PIPE IS USED.



FIRE PROTECTION: HIGH DENSITY/HIGH PILE STORAGE AT WAREHOUSE

SEE NORTHERN TOOL & EQUIPMENT DRAWINGS FOR SCOPE.

ANCHOR 2B

RETAIL 2C-1

RETAIL 2C-2

RETAIL 2C-3

RETAIL 2C-4

Order Plans @ [www.WDIDILine.com](http://www.WDIDILine.com)

**1 SUPPLY PLAN - ANCHOR 2B AND RETAIL 2C**  
P1.1 SCALE: 3/32" = 1'-0"

**Salem Gate Market**

**ANCHOR 2B AND RETAIL 2C**

1454 AND 1460  
OLD SALEM ROAD  
CONYERS, GEORGIA

PLUMBING SUPPLY PLAN