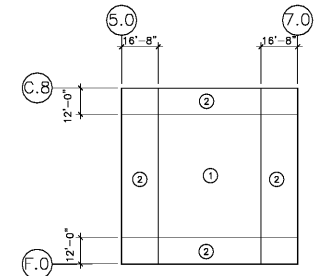


**LINTEL AND ROOF PLAN NOTES:**

- SEE SHEET S3.1 FOR GENERAL NOTES & TYPICAL DETAILS.
- J.B.E. EQUALS JOIST BEARING ELEVATION.
- METAL ROOF DECK SHALL BE 36" WIDE, 1 1/2" DEEP, (PAINTED) TYPE B WIDE RIB ROOF DECK. FOR DIAPHRAGM FASTENING TO FRAMING MEMBERS AND DECK GAGE SEE SCHEDULE.
- STEEL JOIST CAMBER SHALL BE PROVIDED AND SHALL CONFORM TO THE SJA SPECIFICATIONS.
- APPROXIMATE TOTAL WEIGHTS OF ROOF TOP EQUIPMENT ARE SHOWN ON PLAN. VERIFY ALL LOADS, LOCATIONS, CURB SIZES AND OPENING SIZES WITH MECHANICAL CONTRACTOR PRIOR TO FABRICATION. SEE TYPICAL RTU SUPPORT DETAIL FOR FRAMING.
- JOIST BRIDGING SHALL BE PROVIDED IN ACCORDANCE WITH THE SJA SPECIFICATION. IF THE CROSS BRIDGING, HORIZONTAL BRIDGING OR/AND UPLIFT BRIDGING IS INTERRUPTED BY AN OBSTRUCTION, ADDITIONAL BRIDGING SHALL BE PLACED PER DIRECTION OF THE JOIST SUPPLIER.
- SEE S3.1 FOR COLUMN AND LINTEL SCHEDULE.

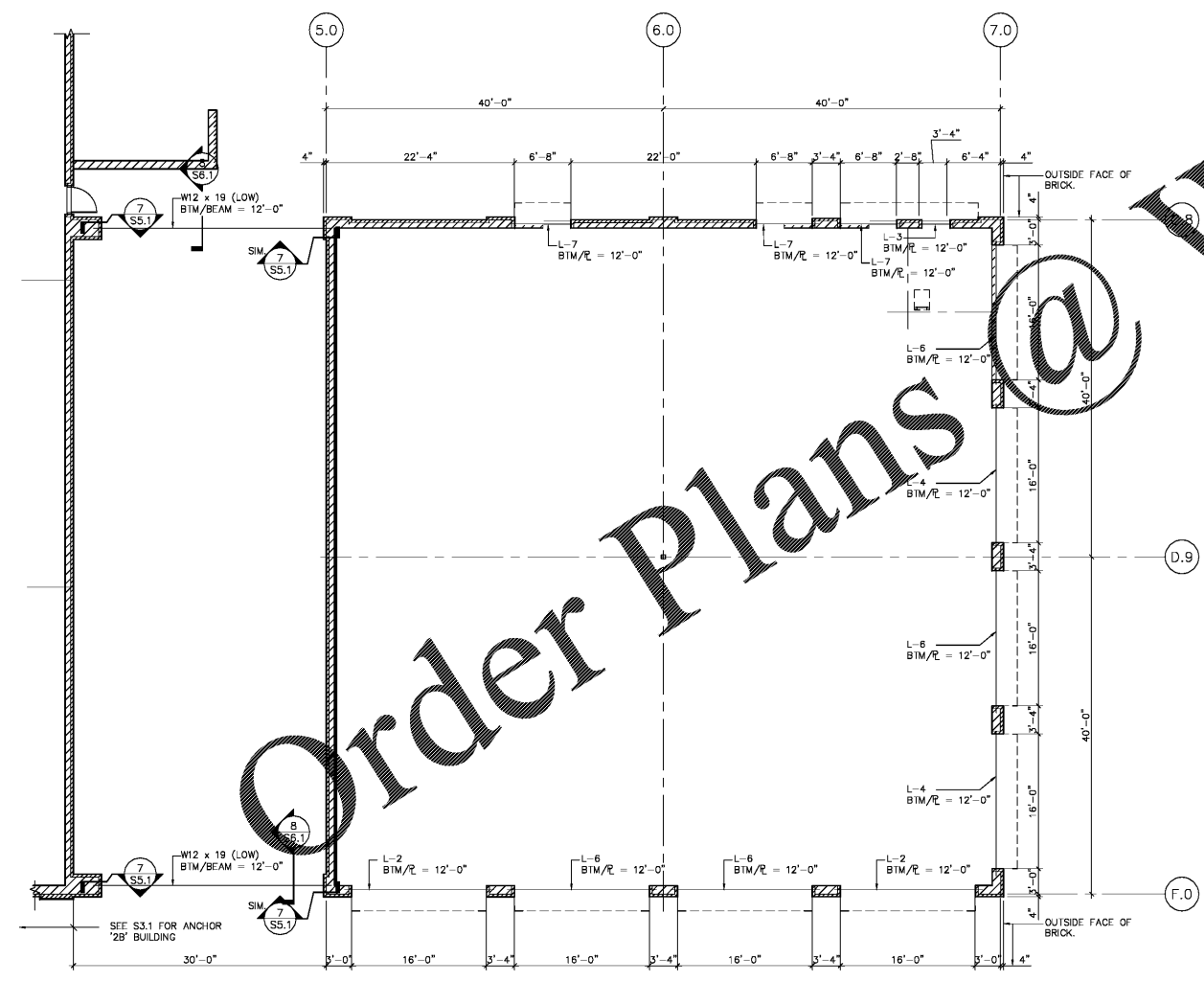
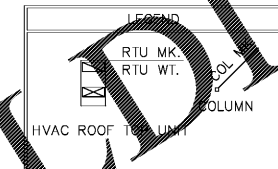
ROOF DIAPHRAGM DIAGRAM SCHEDULE		
ZONE	NO/CONNECTORS TO STL SUPPORT PER 36" WIDE DECK	NO/SIDLAP SCREWS BETWEEN STL SUPPORTS
①	4	4
②	7	4

NOTES:  
 1. THE CONTRACTOR SHALL PROPERLY INSTALL SIDE LAP SCREWS PER MANUFACTURER'S SPECIFICATIONS SO THE SCREWS DEVELOP SHEAR AS LISTED IN STEEL DECK INSTITUTE DESIGN MANUAL, SECOND EDITION.  
 2. AT LEDGER AT THE PERIMETER OF BLDG SHALL BE CONNECTED @ 8" O.C.  
 3. SEE GENERAL NOTES FOR CONNECTORS SIZE.

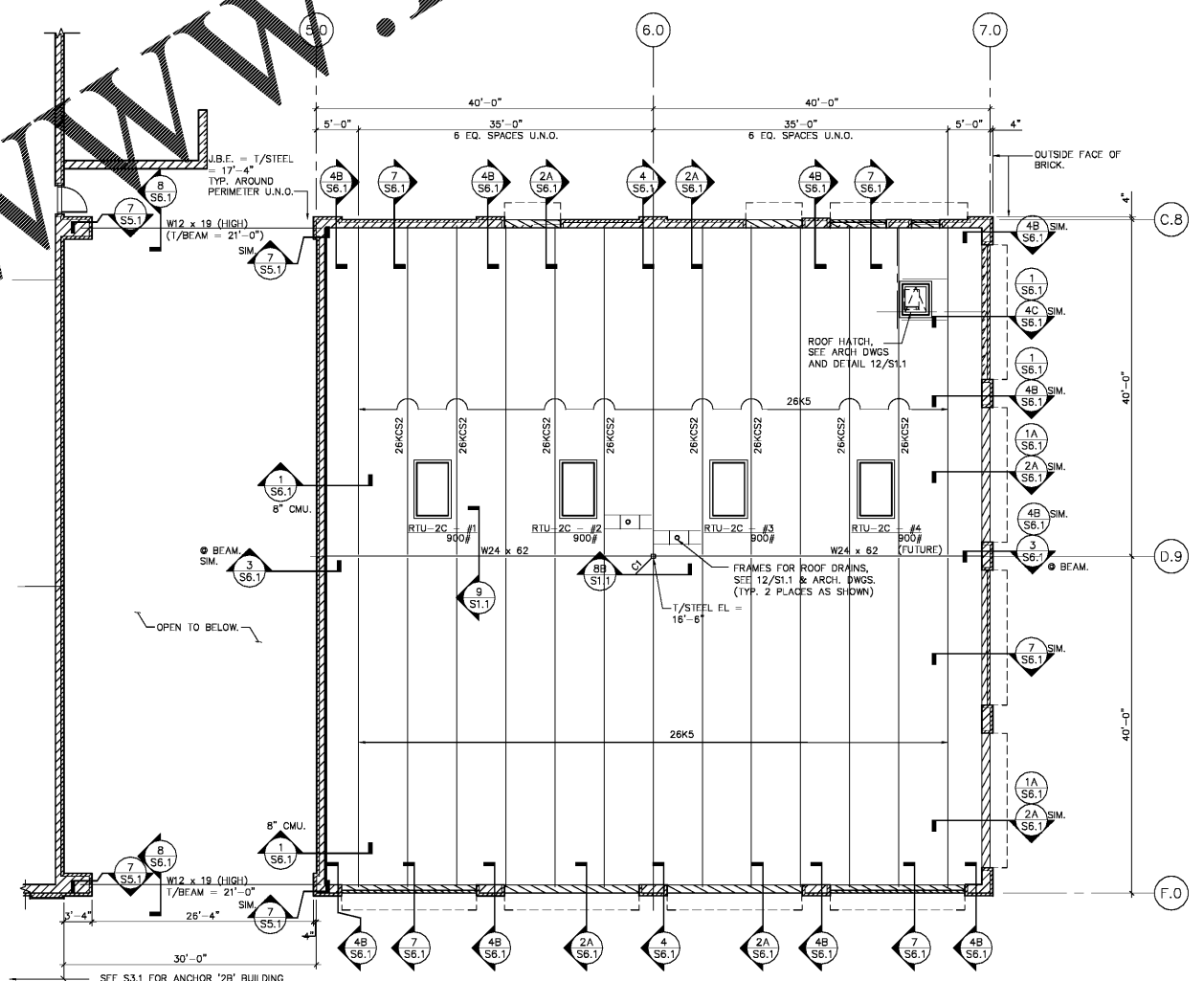


**ROOF DIAPHRAGM PLAN**

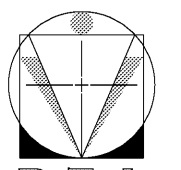
NOTE:  
22 GAGE METAL DECK TO BE USED U.S.A.



1 LINTEL PLAN - RETAIL 2C  
S3.2 SCALE: 1/8" = 1'-0"



2 ROOF FRAMING PLAN - RETAIL 2C  
S3.2 SCALE: 1/8" = 1'-0"



**D·Z·A ASSOCIATES, INC.**

IL REG. # 184-001714 Suite 233N  
 2625 Butterfield Road Oak Brook, Illinois 60523  
 Phone: 630-238-1020 www.dzarch.com

© 2020 D-Z-A ASSOCIATES, INC. THE ARCHITECT SHALL BE DEEMED THE AUTHOR OF THESE DOCUMENTS AND SHALL BE HELD LIABLE FOR ALL UNDERLAINING STATUTORY AND OTHER WAIVER, INCLUDING COPYRIGHT.

Rev. No.	Description	Date
▲	ISSUED FOR PERMIT AND BID	03/29/19
▲	ISSUED FOR BID	05/30/19
▲	RE-ISSUED FOR PERMIT AND BID	10/18/20

STRUCTURAL ENGINEER  
**GreenbergFarrow**  
 1430 West Peachtree St. NW  
 Suite 200  
 Atlanta, GA 30309  
 t. 847 788 9200



**ANCHOR 2B AND RETAIL 2C**

1454 AND 1460 OLD SALEM ROAD  
 CONYERS, GEORGIA

RETAIL 2C - LINTEL AND ROOF PLAN AND NOTES

Date	Drawn	Sheet No.
03/29/19	C.B.	S3.2
Project No.:	Rev.:	(2)
20182028.0	M.H.	