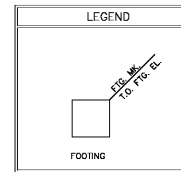


DZA
ASSOCIATES, INC.

IL REG. # 104-001714 Suite 233N
2625 Butterfield Road 60533
Oak Brook, Illinois
Phone: 630-530-1020 www.dzainc.com

© 2019 DZA ASSOCIATES, INC. THE ARCHITECT SHALL BE DEEMED THE AUTHOR OF THESE DOCUMENTS AND SHALL BE RESPONSIBLE FOR ALL CONSTRUCTION AND REVISIONS AND OTHER MATTERS, INCLUDING COPYRIGHT.

No.	Description	Date
▲	ISSUED FOR PERMIT AND BID	03/29/19
▲	ISSUED FOR BID	05/30/19
▲	RE-ISSUED FOR PERMIT AND BID	10/16/20



- FOUNDATION PLAN NOTES - ANCHOR 2B:**
- SEE SHEET S1.1 FOR GENERAL NOTES AND TYPICAL DETAILS.
 - ALL ELEVATIONS REFERENCED FROM FINISH FLOOR ELEVATION OF 0'-0" FOR REFERENCE ONLY.
 - SEE SITE PLAN FOR ACTUAL FINISH FLOOR ELEVATION.
 - T/FTG = TOP OF FOOTING.
 - TOP OF EXTERIOR FOOTINGS (-) 1'-4" U.N.O.
 - CONTRACTOR TO PREPARE SUBGRADE FOR BUILDING PAD AND PAVING AREAS PER GEOTECHNICAL ENGINEER'S REPORT AND RECOMMENDATIONS.
 - JOINT FILLER SHALL BE PLACED IN CLEAN JOINTS, OVERFILLED AND SHAVED FLUSH.
 - WELDED WIRE FABRIC SHALL BE PLACED IN FLAT SHEETS AND CHAIRED TO 2" BELOW TOP OF SLAB.
 - SEE SPECIFICATIONS FOR ALL FLOOR SLAB FINISHES.
 - SLAB JOINTS SHALL BE AT A MAXIMUM OF 15'-0" ON CENTER EACH DIRECTION.
 - SEE SHEET S5.1 FOR TYPICAL CMU DETAILS.
 - 1/CONCRETE WALL ALONG WALL A.D. VARIES. SEE ARCHITECTURAL DRAWINGS FOR ADD'L INFO.
 - 1/FOOTING ALONG WALL A.D. VARIES. SEE ARCHITECTURAL DRAWINGS FOR ADD'L INFO.

LOCATION	THICKNESS & REINF.	SUBBASE
INTERIOR FLOOR SLAB	5" CONC. SLAB ON GRADE REINF. W/6X6-W2.1 X W2.1 W.W.F. ON 15 MIL VAPOR BARRIER	4" GRANULAR SUBBASE (VERIFY W/ GEOTECH ENGINEER)
EXTERIOR SLABS, RAMPS AND PLATFORM	5" CONC. SLAB ON GRADE REINF. W/6X6-W2.1 X W2.1 W.W.F.	6" GRANULAR SUBBASE (VERIFY W/ GEOTECH ENGINEER)
EXTERIOR LOADING DOCK	8" CONC. SLAB ON GRADE REINF. W/ #4 @ 12" O.C. F.W. T&B.	8" GRADED AGGREGATE BASE (VERIFY W/ GEOTECH ENGINEER)
DUMPSTER AND SIDEWALK SLABS	REFER TO ARCHITECTURAL DRAWINGS	

MK.	SIZE	REINF. (F.W. BOT., U.N.O)	REMARKS
F1	6'-6" x 6'-6" x 17"	(8) # 5	
F1.2	6'-6" x 6'-6" x 17"	(8) # 5	18 SD. IN. CONC. PIER
F1.3	5'-0" x 5'-0" x 12"	(5) # 5	T/FTG SHALL MATCH ADJACENT CONT. FTG
F2	9'-8" x 6'-0" x 12"	(5) # 5 SHRT DIR. & (8) # 5 LG. DIR.	
F3	4'-6" x 4'-6" x 12"	(5) # 5	T/FTG SHALL MATCH ADJACENT CONT. FTG
F4	6'-0" x 6'-0" x 12"	(6) # 5	
F5	4'-0" x 4'-0" x 12"	(4) # 5	

MK.	VERTICAL REINF.	REMARKS
W1	#5 @ 48" O.C.	
W2	#5 @ 32" O.C.	
W3	#5 @ 8" O.C.	
W4	#5 @ 8" O.C. EA. FACE.	

- SEE S5.1 FOR ADDITIONAL REINFORCEMENT @ JAMBS.
- #5 @ 32" O.C. AT KNEE WALLS.
- SEE SECTIONS & ARCHITECTURAL DRAWINGS FOR WALL FINISHES.
- REINFORCEMENT BELOW AND ABOVE OPENINGS SHALL BE MAINTAINED, PER SCHEDULE, U.N.O.

STRUCTURAL ENGINEER
GreenbergFarrow
1430 West Peachtree St. NW
Suite 200
Atlanta, GA 30309
T 847 788 9200

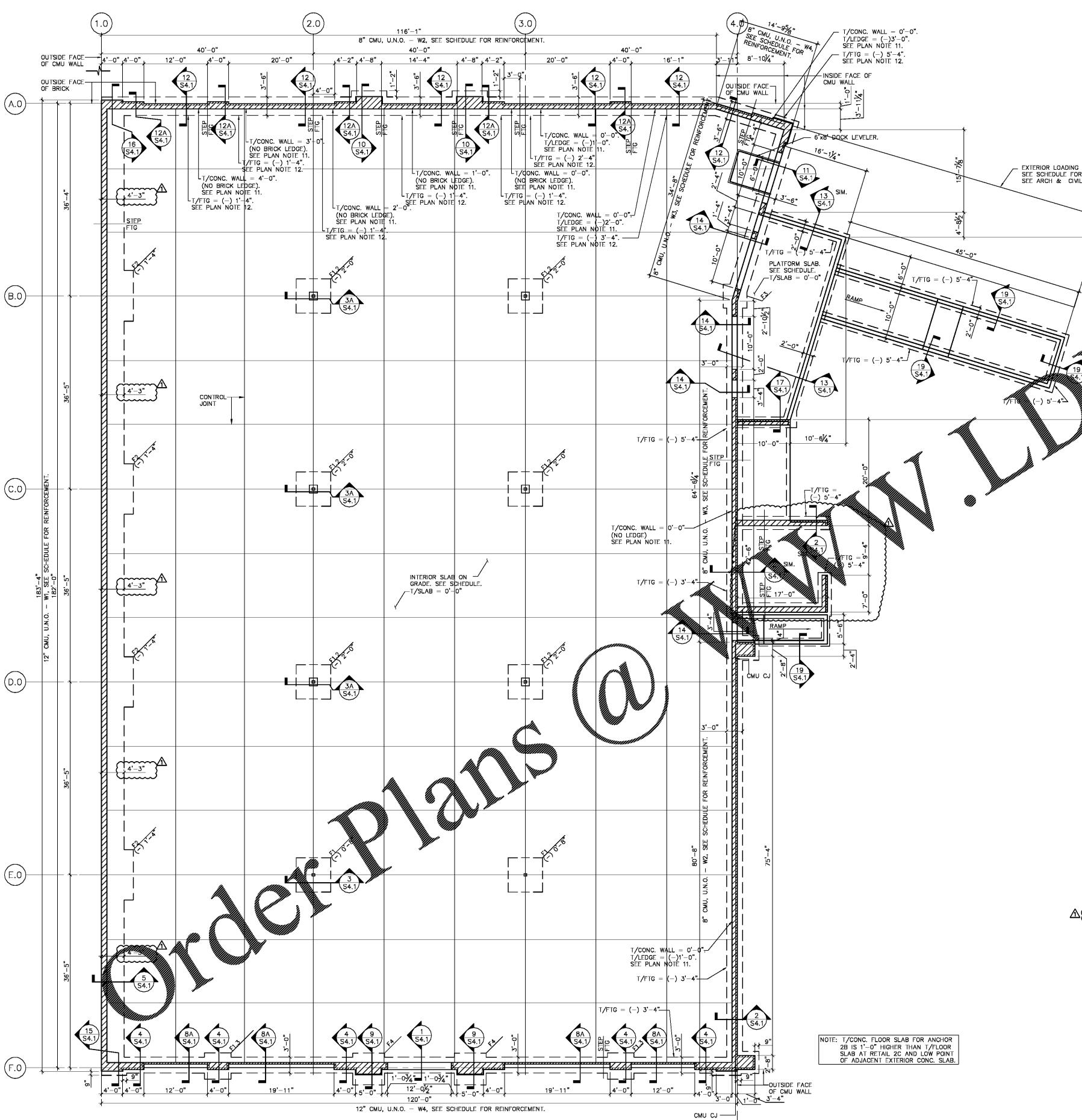
Salem Gate
Market

ANCHOR 2B AND RETAIL 2C

1454 AND 1460
OLD SALEM ROAD
CONYERS, GEORGIA

ANCHOR 2B -
FOUNDATION PLAN AND
PLAN NOTES

Date: 03/29/19
Drawn by: C.B.
Project No.: 20182028.0
M.H.
Sheet No.: S2.1
(2)



1 FOUNDATION PLAN - ANCHOR 2B
S2.1 SCALE: 1/8" = 1'-0"



Order Plans @ www.LDILine.com