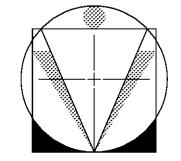


FOUNDATION WATERPROOFING SYSTEMS

- SYSTEM NO. 1 - CONCRETE FOUNDATION WALL:**
- 1/4" PROTECTION/DRAINAGE BOARD (MEL DRAIN 5012) ON
 - 60 MIL WET THICKNESS; (2 APPLICATIONS 30 MIL EA.) LIQUID APPLIED WATERPROOFING MEMBRANE (MEL ROL LM) ON
 - CONCRETE FDN. WALL
- SYSTEM NO. 2 - CONCRETE BLOCK FOUNDATION WALL:**
- 1/4" PROTECTION/DRAINAGE BOARD (MEL DRAIN 5012) ON
 - 60 MIL WET THICKNESS; (2 APPLICATIONS 30 MIL EA.) LIQUID APPLIED WATERPROOFING MEMBRANE (MEL ROL LM) ON
 - CONTINUOUS PARGE COAT (PARGE ALL #1) ON
 - CONCRETE BLOCK FDN. WALL - GROUTED SOLID

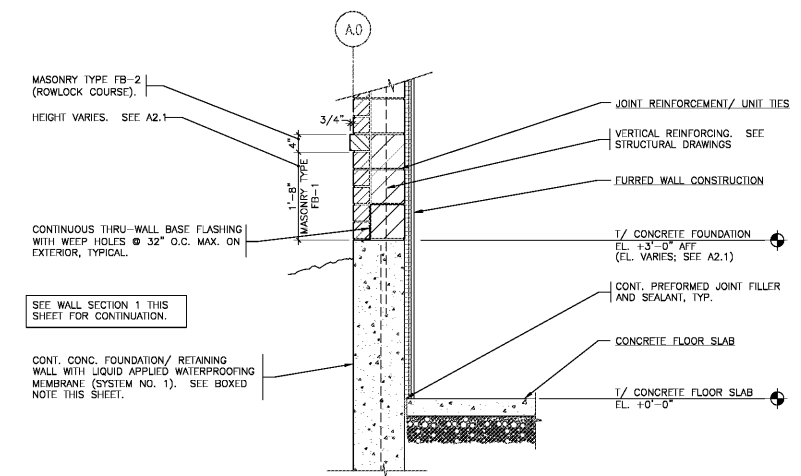
- MISCELLANEOUS NOTES**
- SYSTEMS, INCLUDING ALL ACCESSORIES, TO BE INSTALLED PER MANUFACTURER'S INSTRUCTIONS FOR A COMPLETE WATERPROOF SYSTEM. MANUFACTURER: W.R. MEADOWS, INC.
 - PROVIDE MEL-ROL DETAIL STRIP (9" WIDE) OVER BEM SEALANT (CANT BEAD) AT TRANSITION FROM FDN. WALL TO CONCRETE FOOTING.
 - PROTECTION/DRAINAGE BOARD TO RUN CONTINUOUSLY FROM TERMINATION BAR DOWN TO B/FOOTING.
 - PROVIDE TERMINATION BAR AND SEALANT AT 1/2" WATERPROOFING SYSTEM.
 - PROVIDE ACCESSORIES PER MANUFACTURER'S INSTRUCTIONS FOR OUTSIDE AND INSIDE CORNERS.
 - PROVIDE 4" DIA. PERFORATED DRAIN TILE NEAR B/FOOTING. SURROUND PIPE WITH FREE-DRAINING GRAVEL WRAPPED IN FILTER FABRIC. TILE TO DRAIN VIA GRAVITY. SEE CIVIL DRAWINGS FOR DISCHARGE LOCATION AT CATCH BASIN.



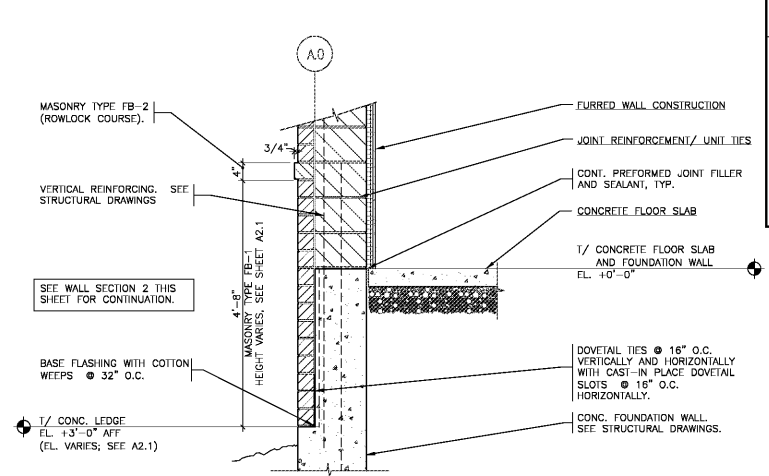
DZA ASSOCIATES, INC.
 IL REG. # 104001714
 2675 Butterfield Road Suite 233N
 Oak Brook, Illinois 60521
 Phone: 630-239-1020 www.dzarch.com

© 2009 DZA ASSOCIATES, INC.
 THE ARCHITECT SHALL BE DEEMED THE AUTHOR OF THESE DOCUMENTS AND SHALL BE RESPONSIBLE FOR ALL CONSTRUCTION AND OTHER RIGHTS, INCLUDING COPYRIGHT.

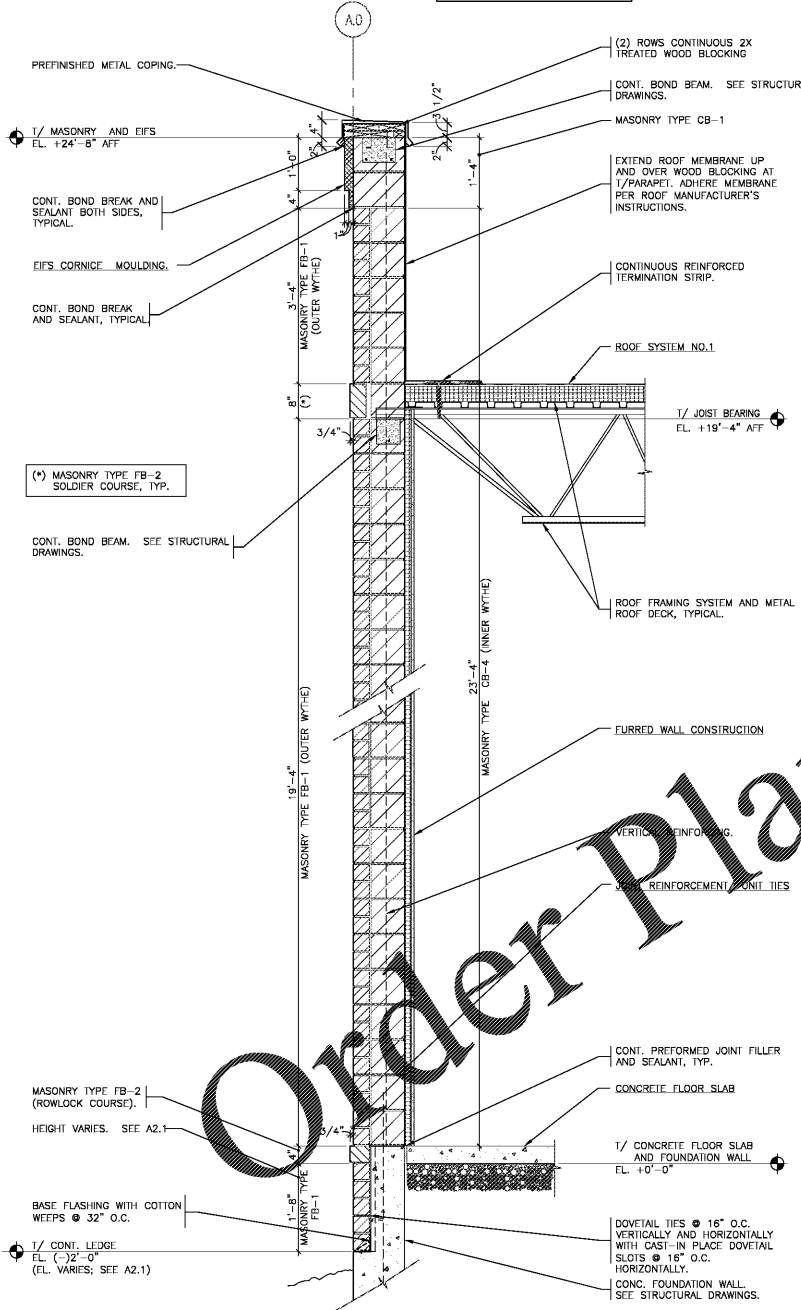
Rev. No.	Description	Date
▲	ISSUED FOR BID AND PERMIT	03/29/19
▲	ISSUED FOR BID	05/30/19
▲	RE-ISSUED FOR BID AND PERMIT	10/16/20



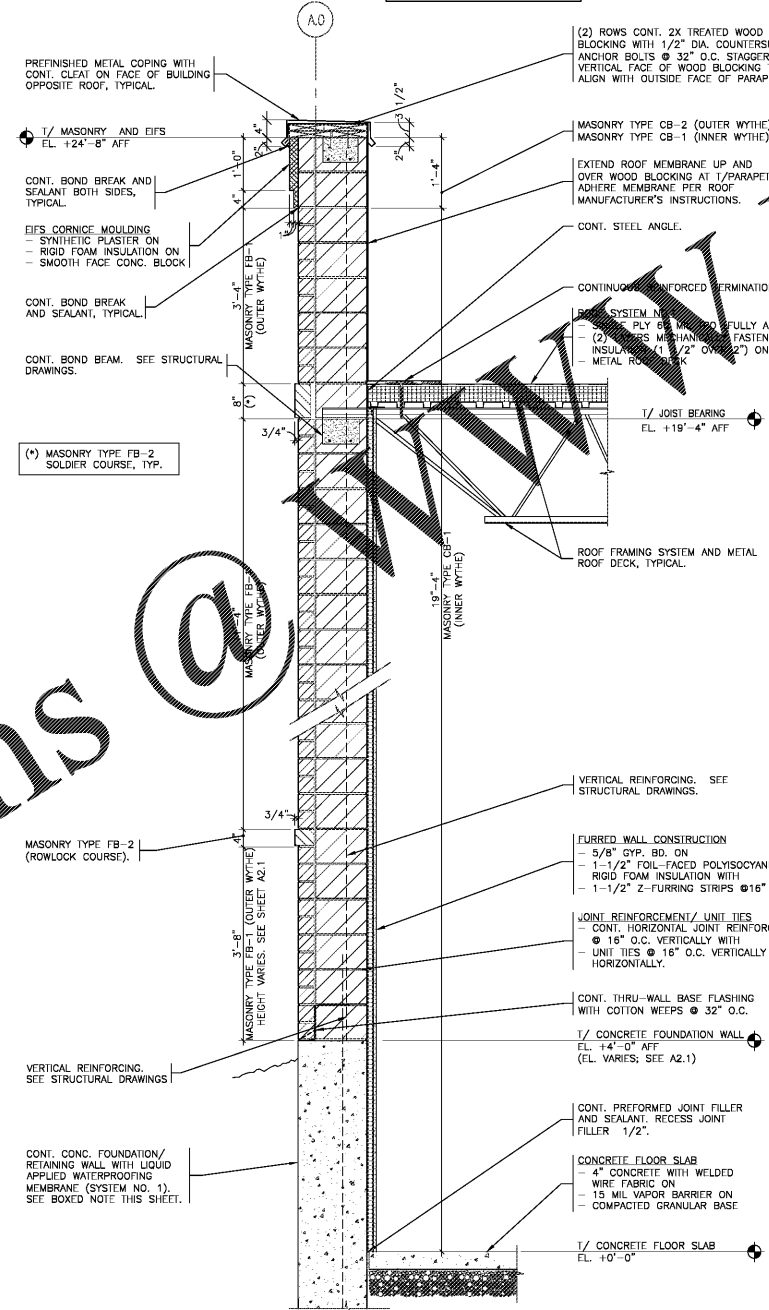
1A PARTIAL WALL SECTION
 3/4" = 1'-0"
 SEE WALL SECTION 2 THIS SHEET FOR TYPICAL CONSTRUCTION NOTES.



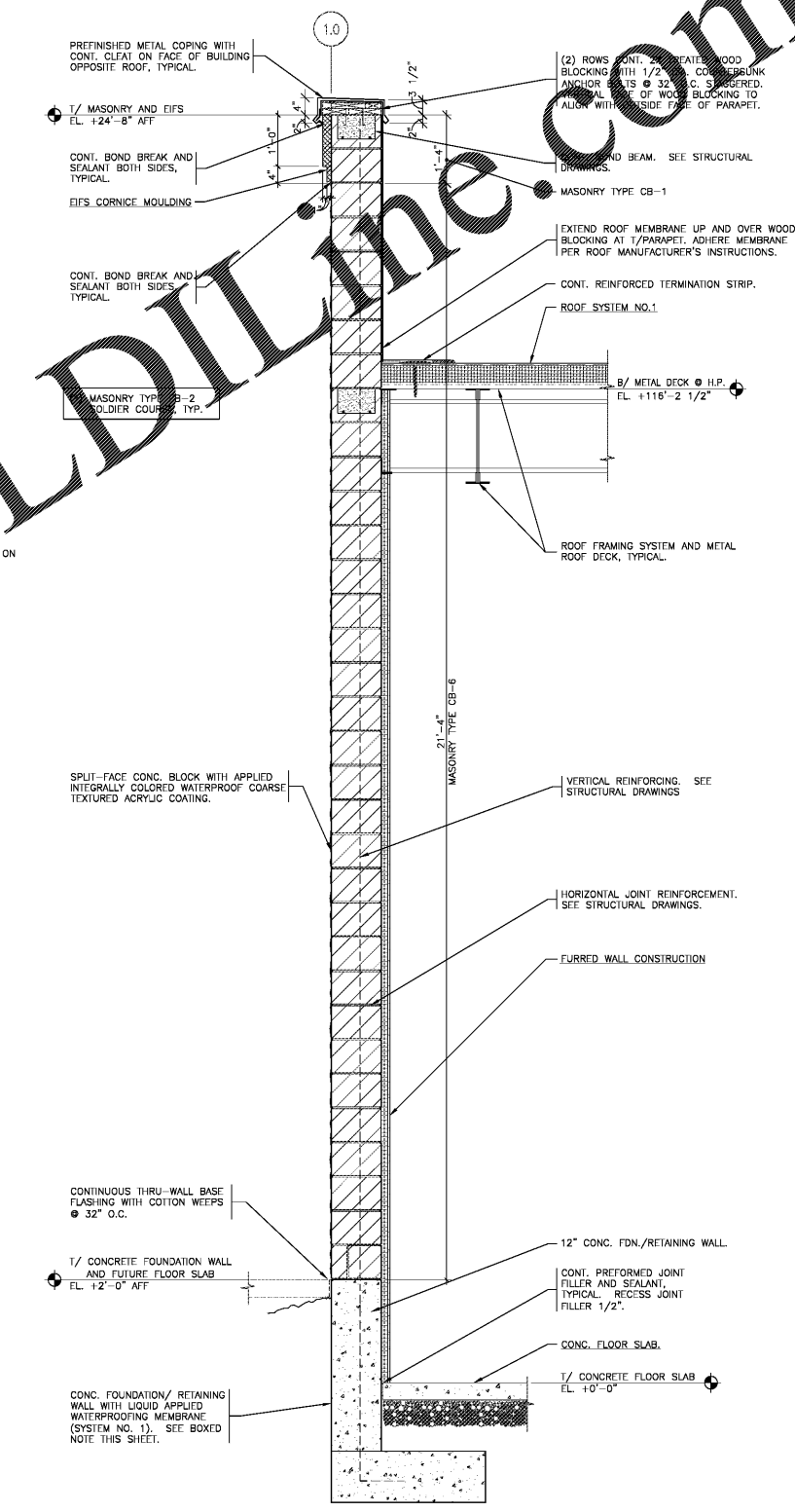
2A PARTIAL WALL SECTION
 3/4" = 1'-0"
 SEE WALL SECTION 2 THIS SHEET FOR TYPICAL CONSTRUCTION NOTES.



1 WALL SECTION
 3/4" = 1'-0"
 SEE WALL SECTION 2 THIS SHEET FOR TYPICAL CONSTRUCTION NOTES.



2 WALL SECTION
 3/4" = 1'-0"
 SEE WALL SECTION 2 THIS SHEET FOR TYPICAL CONSTRUCTION NOTES.



3 WALL SECTION
 3/4" = 1'-0"
 SEE WALL SECTION 2 THIS SHEET FOR TYPICAL CONSTRUCTION NOTES.

Order Plans @ WWW.LDILLINE.COM



ANCHOR 2B AND RETAIL 2C

1454 AND 1460
 OLD SALEM ROAD
 CONYERS, GEORGIA

WALL SECTIONS - 2B

Date	Drawn By	Sheet No.
03/29/19	L.P.	A4.7
Project No.:	H.Z.	