

MASONRY TYPES

- CONCRETE BLOCK (CB)
 - TYPE CB-1: 12" STANDARD GREY, SMOOTH-FACE CONCRETE BLOCK (12"x8"x16" NOMINAL).
 - TYPE CB-2: 4" STANDARD GREY, SMOOTH-FACE CONCRETE BLOCK (4"x8"x16" NOMINAL).
 - TYPE CB-3: 8" STANDARD GREY, SMOOTH-FACE CONCRETE BLOCK (8"x8"x16" NOMINAL).
 - TYPE CB-4: 8" STANDARD GREY, SMOOTH-FACE CONCRETE BLOCK (8"x8"x16" NOMINAL).
 - TYPE CB-5: 10" STANDARD GREY, SMOOTH-FACE CONCRETE BLOCK (10"x8"x16" NOMINAL).
 - TYPE CB-6: 12" STANDARD GREY, SPLIT-FACE CONCRETE BLOCK (12"x8"x16" NOMINAL).
- MASONRY NOTES:
 - PROVIDE FINISHED FACES ON EXPOSED SURFACES OF FACE BRICK.
 - MORTAR JOINTS IN CMU TO BE STRUCK FLUSH; NOT TOOLED IN AREAS TO RECEIVE STUCCO FINISH.
 - MASONRY COURSES BELOW 1/2" CONC. FLOOR SLAB TO BE GROUTED SOLID. SEE STRUCTURAL DRAWINGS.
- FACE BRICK (FB)
 - TYPE FB-1: UTILITY BRICK (INCLUDING CLOSURES)
 - TYPE FB-2: MODULAR BRICK

ADHERED MANUFACTURED STONE VENEER SYSTEM #1

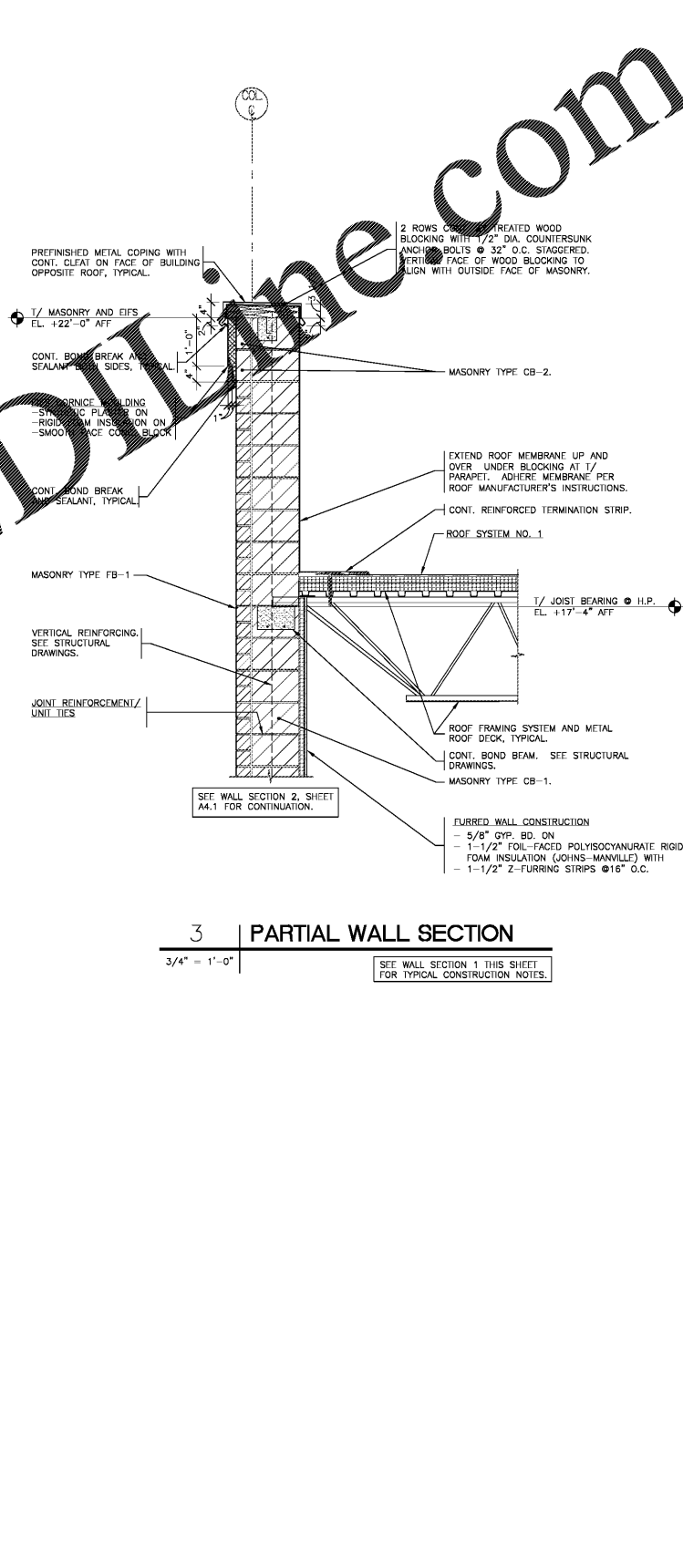
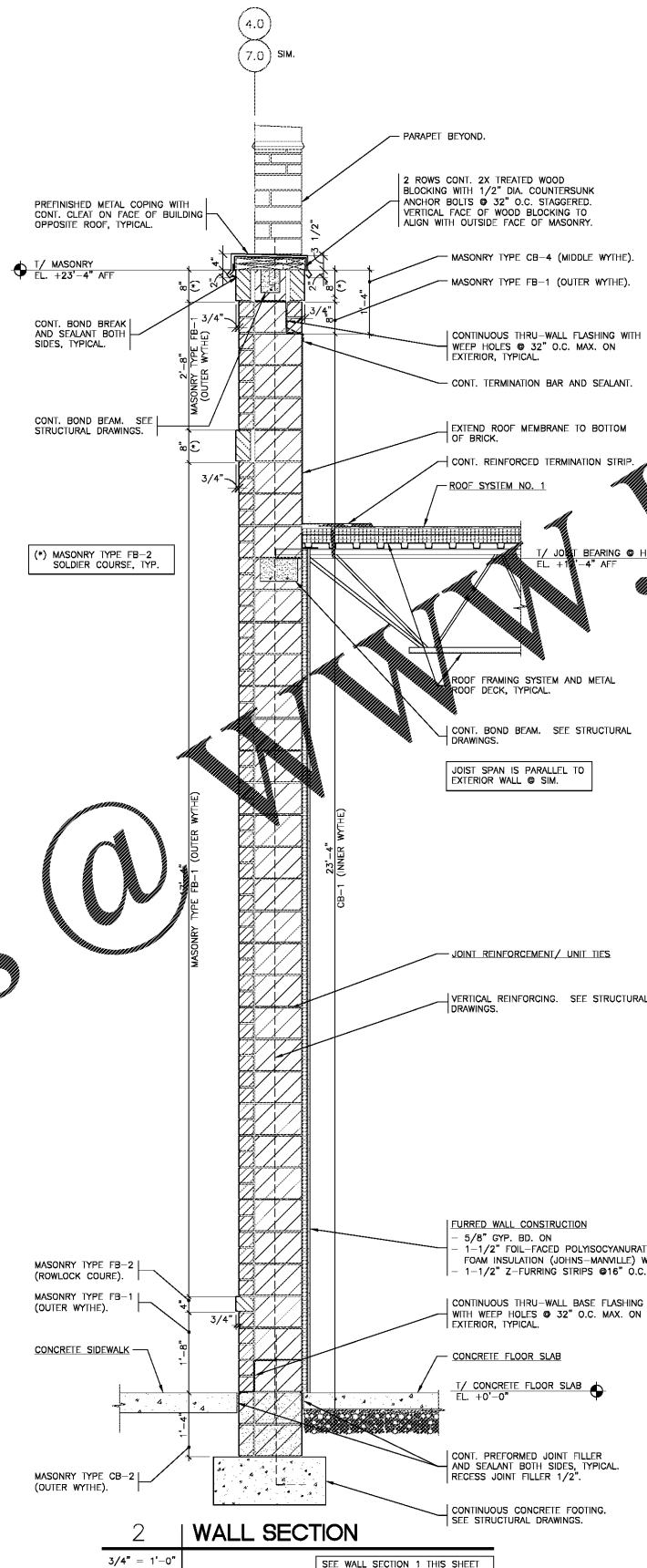
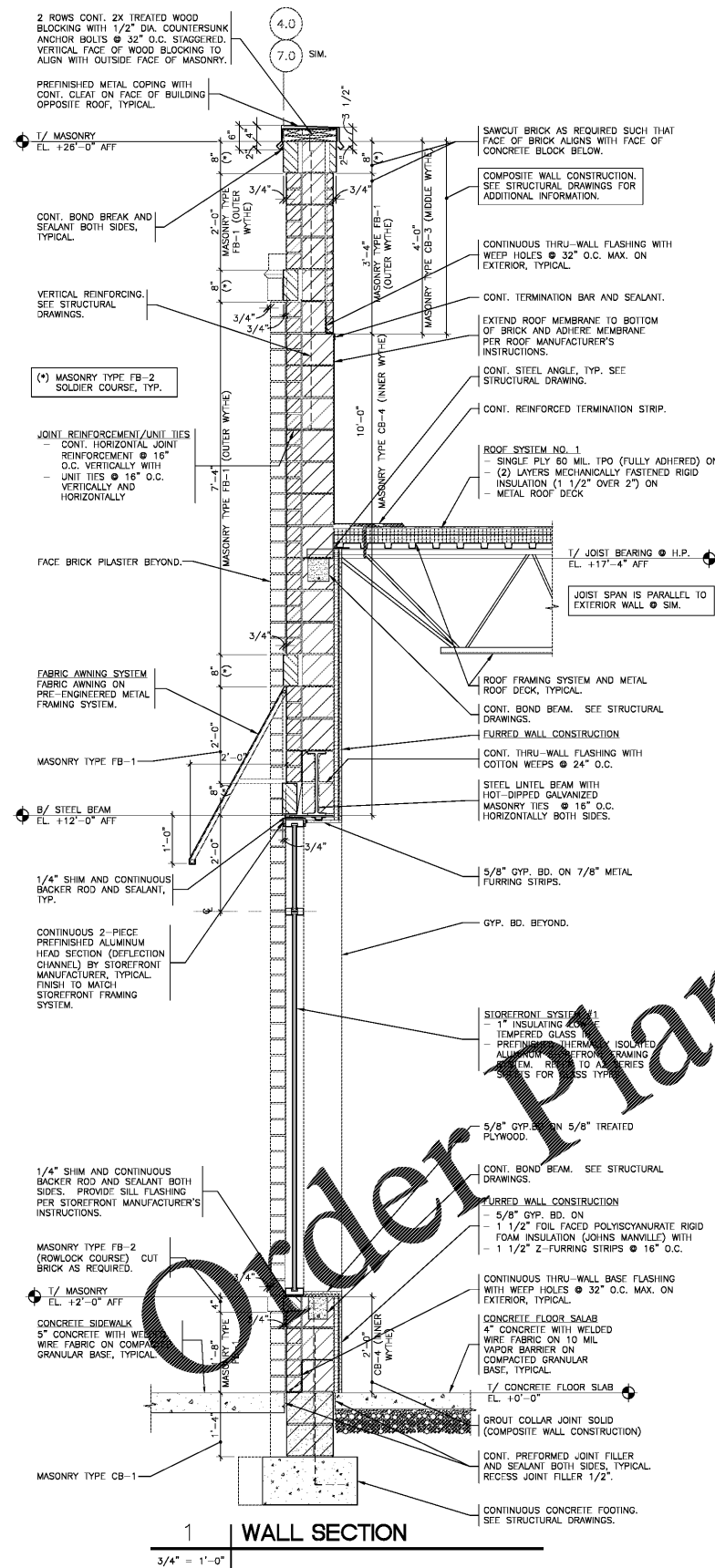
- 1"-1 1/2" THICK MANUFACTURED DRystack STONE VENEER (CLEAN AND BACK BUTTER-STONE WITH "POLYMER MODIFIED MORTAR (MVS VENEER MORTAR BY LATICRETE); 100% COVERAGE) ON SMOOTH FACE CONCRETE BLOCK.
- 1/2"x1/2" NOTCHED TROWEL POLYMER MODIFIED MORTAR PARGE COAT (MVS VENEER MORTAR BY LATICRETE); 100% COVERAGE ON SMOOTH FACE CONCRETE BLOCK.
- MVS AIR AND WATER BARRIER (BY LATICRETE); 100% COVERAGE ON SMOOTH FACE CONCRETE BLOCK.
- PROVIDE 1"x3 1/2" CONT. HOT-DIPPED GALVANIZED WEEP SCREED AT BOTTOM OF STONE. OVERLAP SCREED FLANGE WITH MVS FLEXIBLE SEALING TAPE (BY LATICRETE). INSTALL SCREED PER MVA AND MANUFACTURER'S INSTRUCTIONS. SCREED MANUFACTURED BY NILE'S BUILDING PRODUCTS (800-323-3329).
- PROVIDE CORNER UNITS ON MANUFACTURED ADHERED VENEER STONE.

GENERAL NOTES - MASONRY TIES

- ALL TIES AND ANCHORS TO BE PROVIDED AND INSTALLED IN ACCORDANCE WITH THE REQUIREMENTS/GUIDELINES OF THE BRICK INDUSTRY ASSOCIATION.
- ALL ACCESSORIES TO BE HOT-DIPPED GALVANIZED OR STAINLESS STEEL.
- PROVIDE TIES @ 16" O.C. MAX. VERTICALLY AND HORIZONTALLY. PROVIDE 1/2 BRICK DEPTH MIN. EMBEDED INTO MASONRY AND 5/8" MIN. MORTAR COVER FROM OUTSIDE FACE OF MASONRY TO EDGE OF TIE.
- REFER TO SPECIFICATIONS FOR ADDITIONAL REQUIREMENTS.



Rev. No.	Description	Date
▲	ISSUED FOR BID AND PERMIT	03/29/19
▲	ISSUED FOR BID	05/30/19
▲	RE-ISSUED FOR BID AND PERMIT	10/16/20



Order Plans @

WWW.LDLINE.COM



ANCHOR 2B AND RETAIL 2C

1454 AND 1460
OLD SALEM ROAD
CONYERS, GEORGIA

WALL SECTIONS-RETAIL 2C

Date:	03/29/19	Drawn:	L.P.	Sheet No.:	A4.1
Project No.:	18.110	Check:	H.Z.		