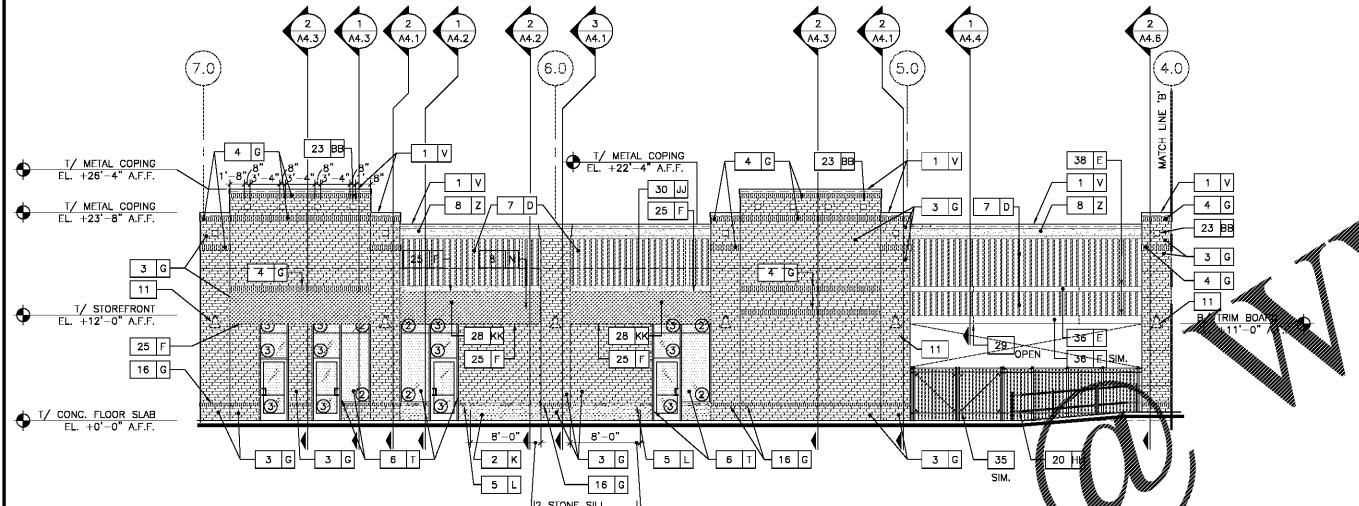
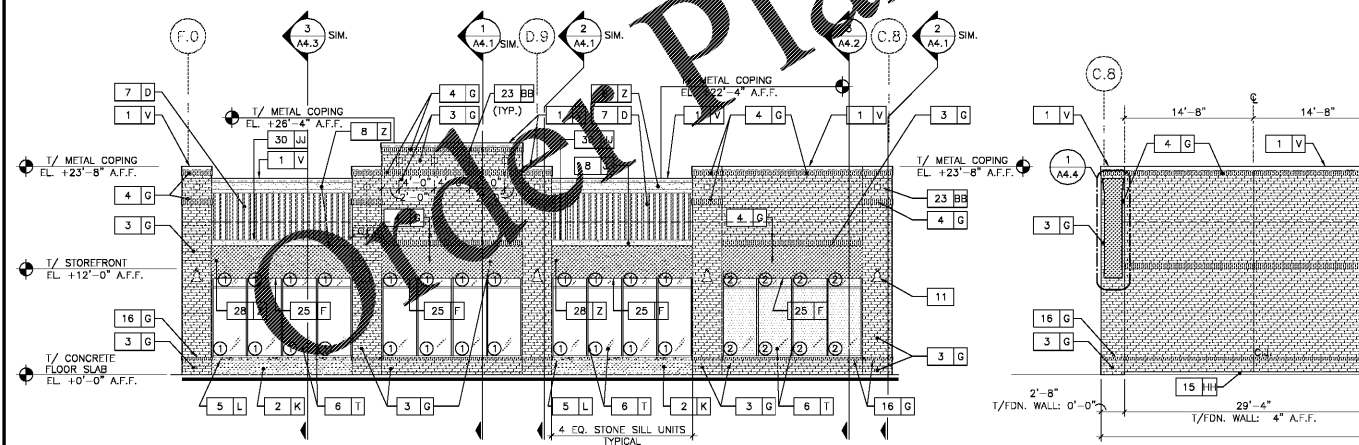


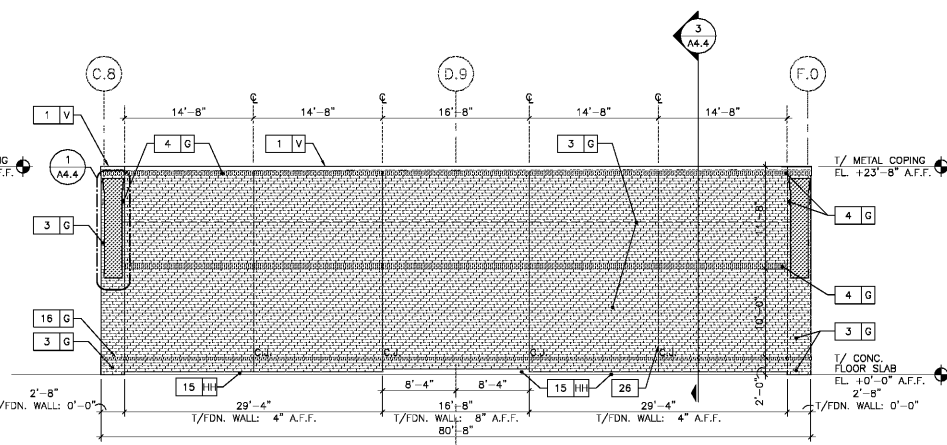
1 SOUTH ELEVATION
 1/8" = 1'-0"
 ARCHITECTURAL DATUM OF 0'-0" ESTABLISHED AS 1/CONC. FLOOR SLAB FOR ANCHOR 2B AND RETAIL 2C. ELEVATION MARKS IDENTIFY HEIGHTS AFF FOR EACH RESPECTIVE BUILDING.
 1/FLOOR SLAB AT RETAIL 2C IS 1'-0" LOWER THAN 1/FLOOR SLAB AT ANCHOR 2B.
 CIVIL DATUM: ANCHOR 2B: 880.00'
 RETAIL 2C: 879.00'



2 NORTH ELEVATION
 1/8" = 1'-0"
 ARCHITECTURAL DATUM OF 0'-0" ESTABLISHED AS 1/CONC. FLOOR SLAB FOR ANCHOR 2B AND RETAIL 2C. ELEVATION MARKS IDENTIFY HEIGHTS AFF FOR EACH RESPECTIVE BUILDING.
 1/FLOOR SLAB AT RETAIL 2C IS 1'-0" LOWER THAN 1/FLOOR SLAB AT ANCHOR 2B.
 CIVIL DATUM: ANCHOR 2B: 880.00'
 RETAIL 2C: 879.00'



3 EAST ELEVATION
 1/8" = 1'-0"
 ARCHITECTURAL DATUM OF 0'-0" ESTABLISHED AS 1/CONC. FLOOR SLAB FOR ANCHOR 2B AND RETAIL 2C. ELEVATION MARKS IDENTIFY HEIGHTS AFF FOR EACH RESPECTIVE BUILDING.
 1/FLOOR SLAB AT RETAIL 2C IS 1'-0" LOWER THAN 1/FLOOR SLAB AT ANCHOR 2B.
 CIVIL DATUM: ANCHOR 2B: 880.00'
 RETAIL 2C: 879.00'



4 WEST ELEVATION
 1/8" = 1'-0"
 ARCHITECTURAL DATUM OF 0'-0" ESTABLISHED AS 1/CONC. FLOOR SLAB FOR ANCHOR 2B AND RETAIL 2C. ELEVATION MARKS IDENTIFY HEIGHTS AFF FOR EACH RESPECTIVE BUILDING.
 1/FLOOR SLAB AT RETAIL 2C IS 1'-0" LOWER THAN 1/FLOOR SLAB AT ANCHOR 2B.
 CIVIL DATUM: ANCHOR 2B: 880.00'
 RETAIL 2C: 879.00'

KEYNOTES AND COLOR SCHEDULE ARE FOR EXTERIOR ELEVATIONS ON SHEETS A2.1 AND A2.2, BUT, ALL NOTES DO NOT APPLY TO EACH ELEVATION ON BOTH SHEETS.

KEYNOTES

- 1 PREFINISHED METAL COPING.
- 2 DRYSTACK ADHERED MANUFACTURED STONE VENER.
- 3 FACE BRICK - UTILITY AND CLOSURE.
- 4 FACE BRICK SOLDIER COURSE - MODULAR.
- 5 CAST STONE SILL. ALIGN JOINTS WITH MULLION CENTERLINES AND AS DIMENSIONED.
- 6 GLASS IN PREFINISHED ALUM. STOREFRONT FRAMING SYSTEM. SEE GLASS SCHEDULE FOR GLASS TYPES.
- 7 PRIMED FIBER CEMENT BOARD HARDIE PANEL VERTICAL SIDING WITH MODERATE CONTACT JOINT. (HARDIE SIERRA 8 PANELS). PAINT.
- 8 EIFS CORNICE MOULDING OR ACCENT TRIM.
- 9 PREFINISHED, PRE-ENGINEERED STANDING SEAM METAL AWNING WITH OPEN ENDS AND BOTTOM.
- 10 PREFINISHED METAL CANOPY/ CLADDING.
- 11 PREFINISHED ORNAMENTAL LIGHT FIXTURE. 1/ FIXTURE AT 12'-0" AFF.
- 12 RIGID FRAME DOCK SHELTER.
- 13 DOCK BUMPER AND LEVELER.
- 14 PREFINISHED OVERHEAD COILING DOOR.
- 15 EXPOSED CONCRETE FOUNDATION WALL - PAINT WHERE TAGGED WITH COLOR FROM COLOR SCHEDULE.
- 16 FACE BRICK ROWLOCK COURSE - MODULAR.
- 17 CONCRETE RAMP.
- 18 INTERNALLY ILLUMINATED WALL SIGN / LOGO. SIGN SHALL CONFORM TO ORDINANCE REQUIREMENTS. (125 S.F. FOR SIGN / LOGO ON NORTH AND SOUTH ELEVATIONS; AGGREGATE AREA OF 250 S.F.) SEE ELECTRICAL DRAWINGS FOR POWER REQUIREMENTS. SIGN INSTALLED BY TENANT (N/A).
- 19 HOLLOW METAL DOOR AND FRAME, TYP. PAINT.
- 20 STEEL PIPE GUARD RAIL / HAND RAIL PAINT.
- 21 PREFINISHED AUTOMATIC BI-PARTING DOOR SYSTEM.
- 22 PREFINISHED METAL SILL BAND.
- 23 15 5/8" x 15 5/8" RECESSED ENGINEERED CAST STONE MEDALLION. PROVIDE CONT. BACKER ROD AND SEALANT ON FOUR SIDES. CUT BRICK AS REQUIRED TO ACCOMMODATE MEDALLION.
- 24 STUCCO WALL COVERING.
- 25 FABRIC AWNING WITH OPEN ENDS AND BOTTOM.
- 26 CONTROL JOINT TYPICAL FOR ALL MARKED C.J. SEE DETAIL 15/A5.1
- 27 PREFINISHED FIBER CEMENT TRIM BOARD IN (SMOOTH TEXTURE) WITH CONCEALED HARDIE TRIM FLAT TABS (LENGTH: 5/4 X 7 1/4").
- 28 STUCCO WALL COVERING BEYOND (CONCEALED BY AWNING).
- 29 JOINT BETWEEN HARDIE TRIM BOARD (MAX 12' LENGTH). APPLY FINISH ON FIELD CUT SURFACES, TYP.
- 30 PREFINISHED Z - FIBER CEMENT FLASHING/TRIM (FRY REGLET; FCP-HOZ)
- 31 PREFINISHED FIBER CEMENT BOARD VERTICAL PANEL (HARDIE PANEL) WITH SELECT CEDARMILL TEXTURE AND MODERATE CONTACT JOINT.
- 32 PREFINISHED METAL COUNTERFLASHING.
- 33 PREFINISHED FIBER CEMENT BOARD CUSTOM COLONIAL LAP SIDING WITH SMOOTH FINISH AND MODERATE CONTACT JOINT.
- 34 SPLIT-FACE CONCRETE BLOCK WITH APPLIED INTEGRALLY COLORED WATERPROOF TEXTURED ACRYLIC COATING.
- 35 PREFINISHED BLACK 6'-0" HIGH COMMERCIAL ORNAMENTAL STEEL FENCE WITH (1) 3'-4" WIDE SINGLE SWING GATE AND (2) 58.75" LEAF WIDTH EA. DOUBLE SWING GATE (122" CLEAR OPENING). DESIGN REFERENCE: MAJESTIC 3-RAIL FENCE AND GATES WITH 2.5" X 12 GA. SQUARE POSTS WITH STANDARD FLAT CAP AND 42" DEEP CONG. FOOTING (AGIS PLUS BY AMERISLAR FENCE PRODUCTS); NO SINGLE SWING GATE @ SIM. SEE INTERIOR BUILD-OUT DRAWINGS FOR HARDWARE REQUIREMENTS FOR SINGLE SWING GATE.
- 36 5/4 x 7 1/4" PREFINISHED SMOOTH FIBER CEMENT TRIM BOARD. 5/4 x 11 1/4" TRIM BOARD @ SIM.
- 37 EXPOSED STEEL BEAM. PAINT TO MATCH [W].
- 38 PREFINISHED Z - FIBER CEMENT FLASHING/TRIM (FRY REGLET; SPECIAL SHAPE).
- 39 PREFINISHED METAL CLADDING ON GABLE FEATURE ELEMENT.
- 40 PREFINISHED METAL SLEEK OUTSIDE CORNER TRIM, TYPICAL (OC5; FCP-LPO/SONR BY FRY REGLET).
- 41 PREFINISHED METAL COPING/ FLASHING.
- 42 8'-0" x 8'-0" x 5/8" TREATED PLYWOOD SUBSTRATE FOR WALL SIGN.
- 43 7 5/8" x 7 5/8" RECESSED ENGINEERED CAST STONE MEDALLION. PROVIDE CONT. BACKER ROD AND SEALANT ON FOUR SIDES. CUT BRICK AS REQUIRED TO ACCOMMODATE MEDALLION.

COLOR SCHEDULE

A COBBLE STONE (JAMES HARDIE)	T CLEAR ANODIZED
B 0112 SANDWICH BRICK (HARDIE) - NOT USED.	U HARTFORD GREEN (BERRIDGE) - NOT USED.
C 0007 BRICK (HARDIE) - NOT USED.	V HARTFORD GREEN (BERRIDGE)
D WOODSTOCK BROWN (JAMES HARDIE)	W COLONIAL RED (BERRIDGE)
E SAIL CLOTH (JAMES HARDIE).	X 0110 SANDWICH BRICK (HARDIE) - NOT USED.
F FOREST GREEN (SUNBRELLA FIRE-SIST).	Y 0107 SANDWICH BRICK (HARDIE) - NOT USED.
G #B40 KHAKI MATT; (REDLAND BRICK - HARMAR PLANT)	Z MATCH #113 AMARILLO WHITE (DRYIT)
H 0109 SANDWICH BRICK (HARDIE) - NOT USED.	AA 0008 BRICK (HARDIE) - NOT USED.
I 0110 SANDWICH BRICK (HARDIE) - NOT USED.	AB 075M-079-N; LACE-COSTAL IVORY (PINEAPPLE GROVE DESIGNS)
J 0111 SANDWICH BRICK (HARDIE) - NOT USED.	AC 0112 SANDWICH BRICK (HARDIE) - NOT USED.
K CARMEL MOUNTAIN PROLEDGE BY (CORONADO); ALTERNATE: CHABLIS (PROLEDGE BY CORONADO).	AD 0113 SANDWICH BRICK (HARDIE) - NOT USED.
L BUFF	AE 0114 SANDWICH BRICK (HARDIE) - NOT USED.
M 0115 SANDWICH BRICK (HARDIE) - NOT USED.	AF KIWIKI BROWN (JAMES HARDIE)
N MATCH SAIL CLOTH (JAMES HARDIE)	AG #B18 IRONGATE MATT; (REDLAND BRICK - HARMAR PLANT)
O #103 NATURAL WHITE (DRYIT) - NOT USED.	AH PAINT COLOR TO BE DETERMINED.
P TERRA COTTA (SUNBRELLA FIRE-SIST)	AI MATCH SAIL CLOTH (JAMES HARDIE)
Q 0116 SANDWICH BRICK (HARDIE) - NOT USED.	AJ MATCH WOODSTOCK BROWN (JAMES HARDIE)
R 0117 SANDWICH BRICK (HARDIE) - NOT USED.	AK MATCH WOODSTOCK BROWN (JAMES HARDIE)
S 0118 SANDWICH BRICK (HARDIE) - NOT USED.	AL 165M-079-N; LACE-COSTAL IVORY (PINEAPPLE GROVE DESIGNS)

GLASS SCHEDULE

MARK	DESCRIPTION
①	1" INSULATING LOW-E TEMPERED GLASS; VE1-42 (VIRACON)
②	1/4" TEMPERED GLASS WITH CERAMIC FRIT ON SURFACE #2; V933 WARM GRAY (VIRACON)
③	1" INSULATING LOW-E TEMPERED GLASS WITH CERAMIC FRIT ON SURFACE #2; V933 WARM GRAY (VIRACON)

DZA ASSOCIATES, INC.
 REG. # 184-001714
 2635 Butterfield Road Suite 2339
 Oak Brook, Illinois 60523
 Phone: 630-230-1620 www.dzarch.com

© 2009 DZA ASSOCIATES, INC. THE ARCHITECT SHALL BE DEEMED THE AUTHOR OF THESE DRAWINGS AND SHALL RETAIN ALL OWNERSHIP, INTELLECTUAL PROPERTY AND OTHER RIGHTS, INCLUDING COPYRIGHT.

Rev. No.	Description	Date
▲	ISSUED FOR BID AND PERMIT	03/29/19
▲	ISSUED FOR BID	05/30/19
▲	RE-ISSUED FOR BID AND PERMIT	10/16/20

Salem Gate
Marked

ANCHOR 2B AND RETAIL 2C

1454 AND 1460 OLD SALEM ROAD
 CONYERS, GEORGIA

RETAIL 2C - EXTERIOR ELEVATIONS, KEYNOTES AND SCHEDULES.

Date:	03/29/19	Drawn:	L.P.	Sheet No.:	A2.2
Project No.:	18.110	By:	H.Z.	Scale:	(2)