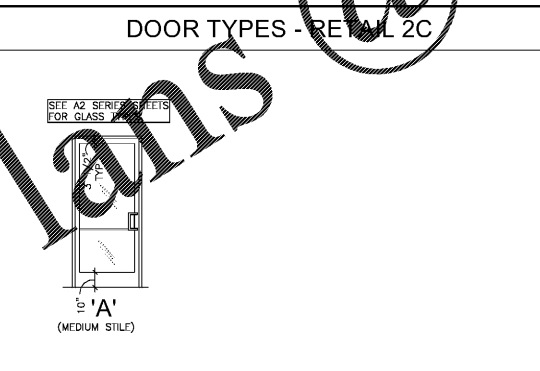
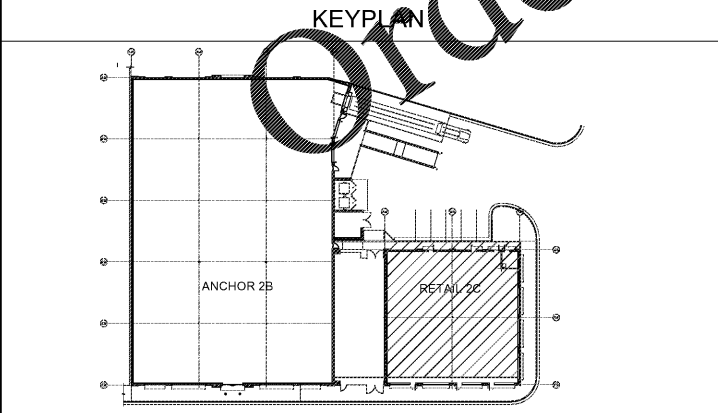


DOOR SCHEDULE - RETAIL 2C

MARK	LOCATION	DOOR SIZE	DOOR	FRAME	HW. SET
		WIDTH HEIGHT THICKNESS	MAT'L TYPE FINISH/COLOR	MAT'L FINISH/COLOR DETAIL	
1	STOREFRONT / SPACE 2C-1	3'-0" 7'-0"	ALUM/GLASS A ANOD/CLEAR	ALUM ANOD/CLEAR	1
2	STOREFRONT / SPACE 2C-2	3'-0" 7'-0"	ALUM/GLASS A ANOD/CLEAR	ALUM ANOD/CLEAR	1
3	STOREFRONT / SPACE 2C-3	3'-0" 7'-0"	ALUM/GLASS A ANOD/CLEAR	ALUM ANOD/CLEAR	1
4	LANDLORD'S ROOM	3'-0" 7'-0"	ALUM/GLASS A ANOD/CLEAR	ALUM ANOD/CLEAR	1
5	REAR EXIT / SPACE 2C-3	3'-0" 7'-0"	ALUM/GLASS A ANOD/CLEAR	ALUM ANOD/CLEAR	1
6	REAR EXIT / SPACE 2C-2	3'-0" 7'-0"	ALUM/GLASS A ANOD/CLEAR	ALUM ANOD/CLEAR	2
7	REAR EXIT / SPACE 2C-1	3'-0" 7'-0"	ALUM/GLASS A ANOD/CLEAR	ALUM ANOD/CLEAR	2



HARDWARE SETS - RETAIL 2C

HARDWARE SET NO. 1

- (3)-HINGES 4.5 X 4.5 NRP (BRASS) US26D (KAWNEER)
- (1)-DEADLOCK; MS-1850A (ADAMS RIT)
- (1)-EXTERIOR CYLINDER 1E74 X C181 X R13 US26D (BEST)
- (1)-DEADLOCK LEVER; ASSOM'S WITH INTEGRAL EXIT INDICATOR (ADAMS RIT)
- (1)-PUSH BAR CP-II #14 CLEAR ANODIZED (KAWNEER)
- (1)-PULL BAR CO-12 #14 CLEAR ANODIZED (KAWNEER)
- (1)-PARALLEL ARM CLOSER LCN 4040 (KAWNEER)
- (1)-THRESHOLD-HDCP; ACCESSIBLE
- (1)-WEATHERSTRIPPING AND SWEEP

HARDWARE SET NO. 2

- (3)-HINGES 4.5 X 4.5 NRP (BRASS) US26D (KAWNEER)
- (1)-1856 CONCEALED ROD EXIT DEVICE (KAWNEER)
- (1)-PARALLEL ARM CLOSER 1801BF (NORTON)
- (1)-THRESHOLD-HDCP; ACCESSIBLE
- (1)-WEATHERSTRIPPING AND SWEEP
- (1)-EXIT ONLY SIGN; EXTERIOR
- (1)-EMERGENCY EXIT ONLY SIGN; INTERIOR
- (1)-ALARM DEVICE (DETEX)

MISCELLANEOUS NOTES

- KEYNOTES ARE FOR FLOOR PLANS ON SHEETS A1.1 AND A1.2 BUT MAY NOT APPLY TO BOTH SHEETS.
- GENERAL NOTES, CODE DATA, MISCELLANEOUS NOTES, CONCRETE SLAB/PAD DESIGNS, AND ENERGY CONSERVATION CODE - BUILDING ENVELOPE APPLY TO ANCHOR 2B AND RETAIL 2C.

CONCRETE SLAB/PAD DESIGNS

- FLOOR SLAB**
 - 4" FOR 2C; 5" FOR 2B, 4000 PSI CONCRETE WITH 6x6 W2.1 X W2.1 WWF ON 15 MIL VAPOR BARRIER ON 4" COMPACTED GRANULAR BASE. LAP VAPOR BARRIER JOINTS 6" MIN. SEE STRUCTURAL DRAWINGS FOR ADDITIONAL INFORMATION AND CONTROL JOINT PATTERNS.
- SIDEWALK AND OUTDOOR TRAILER DISPLAY**
 - 5", 5000 PSI, AIR-ENTRAINED CONCRETE WITH 6x6 W2.1 X W2.1 WWF ON 4" MINIMUM COMPACTED GRANULAR BASE. PROVIDE TOOLED CONTROL JOINTS.
- TRANSFORMER PAD**
 - 6", 4000 PSI CONCRETE WITH HEAVY BROOM FINISH WITH #3 BARS AT 6" O.C. (EACH WAY). VERIFY DESIGN REQUIREMENTS WITH UTILITY COMPANY.
- DUMPSTER PAD AND APRON**
 - 8", 4000 PSI AIR-ENTRAINED CONCRETE WITH HEAVY BROOM FINISH WITH 6x6 W2.9xW2.9 WWF ON 6" COMPACTED GRANULAR BASE.

KEYNOTES

- PLAN KEYNOTES ARE FOR SHEETS A1.1 AND A1.2, HOWEVER, ALL KEYNOTES DO NOT APPLY TO BOTH SHEETS.
- MASONRY WALL CONSTRUCTION.
 - FUTURE TENANT SEPARATION PARTITION; SHOWN FOR REFERENCE ONLY.
 - FURRED WALL CONSTRUCTION. SEE PARTITION TYPES ON SHEET A1.2 FOR ADDITIONAL INFORMATION.
 - ROOF DRAIN LEADER. SEE PLUMBING DRAWINGS FOR ADDITIONAL INFORMATION.
 - OVERFLOW/EMERGENCY ROOF DRAIN LEADER. SEE PLUMBING DRAWINGS FOR ADDITIONAL INFORMATION.
 - STEEL TUBE COLUMNS.
 - GYP. BD. SILL AT MASONRY KNEEWALL.
 - GLASS IN PREFINISHED, THERMALLY INSULATED ALUMINUM STOREFRONT FRAMING SYSTEM. SEE A2-SERIES SHEETS FOR GLASS TYPES.
 - LINE OF CANOPY OR AWNING ABOVE.
 - PERMANENT TRAILER BOLLARD, TYP. SEE 14/AS.2. POSITION BOLLARD SUCH THAT D-RING FACES COLLIDER IN DIRECTION SHOWN BY ARROW, TYP.
 - RECESSED KNOX BOX. VERIFY MODEL NUMBER, LOCATION AND INSTALLATION HEIGHT WITH LOCAL AUTHORITIES.
 - 20" WIDE ROOF ACCESS LADDER. SEE SHEET AS.1 FOR ADDITIONAL INFORMATION.
 - AUTOMATIC BI-PARTING DOOR SYSTEM WITH EMERGENCY BREAKOUT FEATURE ON DOORS AND SIDELITES.
 - CONCRETE FILLED SPIRAL BOLLARD; TYPICAL FOR TWO. SEE 13/AS.1.
 - 6" # STEEL PIPE BOLLARD. SEE 14/AS.2.
 - DOOR MARK FOR EXTERIOR SHELL BUILDING DOORS SPECIFIC TO ANCHOR 2B (NORTHERN TOOL + EQUIPMENT), TYPICAL TO INTERIOR DRAWING FOR NORTHERN TOOL + EQUIPMENT. REFER TO INTERIOR BUILDING DRAWINGS FOR NORTHERN TOOL + EQUIPMENT, SHEET A-400 FOR DOOR SCHEDULE, TYPICAL NOTES AND SIGNAGE GROUP.
 - PREFINISHED BLOCK 4'-0" HIGH CONCRETE ORNAMENTAL STEEL FENCE WITH SWING GATES. SEE SHEET A2.2 FOR ADDITIONAL INFORMATION.

EXIT ANALYSIS

RETAIL 2C SHALL BE SUBDIVIDED FOR OCCUPANCY BY MULTIPLE TENANTS. EXIT ANALYSIS FOR SPACE 2C-1 IS INCLUDED ON SHEET A1.1. EXIT ANALYSIS FOR SPACES 2C-2 AND 2C-3 SHALL BE INCLUDED WITH DRAWINGS OF EACH TENANT SPACE AND SUBMITTED FOR PERMIT REVIEW AT A LATER DATE, INDEPENDENT OF THESE SHELL BUILDING DRAWINGS.

PLUMBING FIXTURE ANALYSIS

RETAIL 2C SHALL BE SUBDIVIDED FOR OCCUPANCY BY MULTIPLE TENANTS. PLUMBING FIXTURE ANALYSIS FOR SPACE 2C-1 IS INCLUDED ON SHEET A7.1. PLUMBING FIXTURE ANALYSIS FOR SPACES 2C-2 AND 2C-3 SHALL BE INCLUDED WITH DRAWINGS OF EACH TENANT SPACE AND SUBMITTED FOR PERMIT REVIEW AT A LATER DATE, INDEPENDENT OF THESE SHELL BUILDING DRAWINGS.

DESIGN/ BUILD WORK

THE FIRE PROTECTION AND FIRE ALARM WORK FOR ANCHOR 2B AND RETAIL 2C (I.E. DETECTION, NOTIFICATION AND MONITORING) ARE DESIGN / BUILD BY THE GENERAL CONTRACTOR. RESPONSIBILITIES INCLUDE, BUT ARE NOT LIMITED TO, DESIGN AND INSTALLATION OF THE SYSTEMS IN ACCORDANCE WITH APPLICABLE CODES, ORDINANCES AND LAWS, AND SPECIFIC CRITERIA REQUIREMENTS FOR ANCHOR 2B. GENERAL CONTRACTOR TO COORDINATE REQUIREMENTS WITH LOCAL AUTHORITIES. REFER TO FIRE PROTECTION DRAWINGS FOR SCOPE /GUIDELINE REQUIREMENTS AND INTERIOR BUILDING DRAWINGS FOR ANCHOR 2B (NORTHERN TOOL + EQUIPMENT).

PARTITION TYPES - ANCHOR 2B AND RETAIL 2C

GENERAL NOTES

- TAPE, 'MUD' AND SAND ALL GYP. BD. SURFACES.
- PROVIDE CONTROL JOINTS AT 24'-0" O.C. MAX. SEE DETAIL 11/AS.1 FOR ADDITIONAL INFORMATION. ALIGN GYP. BD. CONTROL JOINTS WITH MASONRY CONTROL JOINTS.
- PROVIDE LEVEL 4 FINISH ON ALL GYP. BD. SURFACES.

MARK	LOCATION	DESCRIPTION
P-1	LANDLORD'S ROOM	5/8" GYP. BD. ON BOTH SIDES OF 6", 18 GA. METAL STUDS @ 16" O.C. WITH 6" MINERAL FIBER INSULATION BETWEEN STUDS AND 5/8" FIRE RETARDANT PLYWOOD OVERLAY ON LANDLORD'S ROOM SIDE. EXTEND PARTITION CONSTRUCTION TO B/METAL ROOF DECK.
P-2	FURRED WALL	5/8" GYP. BD. ON ONE SIDE OF 1-1/2", METAL Z-FURRING STRIPS @ 16" O.C. WITH 1-1/2" POLYISOCYANURATE RIGID FOAM INSULATION. EXTEND PARTITION CONSTRUCTION FROM 1/2 FLOOR SLAB TO B/METAL ROOF DECK. PROVIDE 5/8" FIRE RETARDANT PLYWOOD OVERLAY AT SIM.

GENERAL NOTES - DOOR SCHEDULE; RETAIL 2C

- "BEST" LOCKSETS INCLUDED AS A DESIGN REFERENCE. ACCEPTABLE MANUFACTURER OF EQUAL QUALITY INCLUDES SCHLAGE.
- ALL DOORS SHALL BE PROVIDED WITH HANDICAP HARDWARE.
- ALL EXIT DOORS SHALL OPERATE WITHOUT THE USE OF A KEY FROM THE INSIDE OF THE BUILDING.
- PROVIDE AND SECURE CLEAR ANODIZED ALUMINUM PLATE ON INSIDE FACE OF DOOR NOS. 4, 5, 6 AND 7 (DOORS WITH CERAMIC FRT).
- BASE BID TO INCLUDE APPLIED ADDRESS/ SUITE NUMBERS ON FRONT AND REAR DOORS. VERIFY SIZE AND FONT TYPE WITH LOCAL AUTHORITIES.
- MAXIMUM DOOR OPENING FORCE TO BE 8.5 LBS. FOR EXTERIOR HINGED DOORS.

GENERAL NOTES

- THESE DRAWINGS PREPARED FOR CONSTRUCTION OF SHELL BUILDING WORK FOR ANCHOR 2B AND RETAIL 2C. DRAWINGS FOR CONSTRUCTION OF INTERIOR BUILD-OUT IMPROVEMENTS FOR ANCHOR 2B (NORTHERN TOOL & EQUIPMENT) ARE INCLUDED IN A SEPARATE SET. DRAWINGS FOR CONSTRUCTION OF INTERIOR BUILD-OUT IMPROVEMENTS FOR REMAINING SPACE RETAIL 2C SHALL BE SUBMITTED FOR PERMIT AT A LATER DATE, INDEPENDENT OF THESE DRAWINGS.
- D.Z.A. ASSOCIATES, INC. AND ITS CONSULTANTS, SHALL NEITHER HAVE CONTROL OVER OR CHARGE OF, NOR BE RESPONSIBLE FOR, THE CONSTRUCTION MEANS, METHODS, TECHNIQUES, SEQUENCES OR PROCEDURES, OR FOR SAFETY PRECAUTIONS AND PROGRAMS IN CONNECTION WITH THE WORK, THESE ARE THE SOLE RESPONSIBILITY OF THE GENERAL CONTRACTOR.
- THE GENERAL CONTRACTOR SHALL NOTIFY THE ARCHITECT IMMEDIATELY IF FIELD CONDITIONS DIFFER FROM THOSE OUTLINED IN THESE DRAWINGS. NO DEVIATION FROM THESE DRAWINGS WILL BE PERMITTED WITHOUT PRIOR WRITTEN APPROVAL FROM THE ARCHITECT OR OWNER.
- THE GENERAL CONTRACTOR SHALL MAINTAIN ALL NECESSARY INSURANCE COVERAGE TO INDEMNIFY THE OWNER, ARCHITECT AND AGENTS THEREOF FROM DAMAGES RESULTING FROM THE PERFORMANCE OF THE WORK. ADDITIONALLY, THE GENERAL CONTRACTOR IS REQUIRED TO ADD THE OWNER AND ARCHITECT AS ADDITIONAL INSURED UNDER ITS GENERAL LIABILITY POLICY(IES).
- THE GENERAL CONTRACTOR SHALL BE RESPONSIBLE FOR SECURING ALL PERMITS AND A CERTIFICATE OF OCCUPANCY/APPROVAL FOR THE WORK PERFORMED UNDER THIS PERMIT.
- ALL WORK SHALL BE PERFORMED IN A FIRST-CLASS WORKMANLIKE MANNER AND SHALL BE IN GOOD, USEABLE CONDITION AT THE DATE OF COMPLETION. THE GENERAL CONTRACTOR SHALL REQUIRE ANY CONTRACTORS PERFORMING WORK TO GUARANTEE THE SAME TO BE FREE FROM ANY AND ALL DEFECTS IN WORKMANSHIP AND MATERIALS FOR (1) YEAR FROM THE DATE OF SUBSTANTIAL COMPLETION. THE GENERAL CONTRACTOR SHALL ALSO REQUIRE ANY SUCH CONTRACTORS TO BE RESPONSIBLE FOR THE REPLACEMENT OR REPAIR OF ALL WORK DONE OR FURNISHED BY OR THROUGH SUCH CONTRACTORS WHICH MAY BECOME DEFECTIVE WITHIN (1) YEAR AFTER SUBSTANTIAL COMPLETION OF WORK. THE CORRECTION OF SUCH WORK SHALL INCLUDE ALL NECESSARY CONNECTION WITH SUCH REMOVAL, REPLACEMENT OR REPAIR OF ANY PART OF THE WORK WHICH MAY BE DAMAGED OR DISTURBED THEREBY.
- LOCATIONS AND QUANTITIES OF EXISTING CONSTRUCTION ELEMENTS ARE INDICATED. THE GENERAL CONTRACTOR SHALL VERIFY ACTUAL CONDITIONS IN FIELD PRIOR TO SUBMITTING BIDS (NOT APPLICABLE).
- ALL CONTRACTORS SHALL BE LICENSED AND BONDED TO PERFORM WORK IN ACCORDANCE WITH THE REQUIREMENTS OF THE AUTHORITIES HAVING JURISDICTION. ALL CONTRACTORS SHALL VERIFY SPECIFIC REQUIREMENTS WITH THE LOCAL AUTHORITIES PRIOR TO SUBMITTING BID.
- WORK SHALL COMPLY WITH ALL GOVERNING FEDERAL, STATE AND LOCAL LAWS, STATUTES, ORDINANCES AND REGULATORY CODES.
- ANY PROPOSED MODIFICATIONS TO THESE DRAWINGS SHALL BE MADE IN WRITING BY THE GENERAL CONTRACTOR AND REVIEWED BY THE OWNER AND ARCHITECT PRIOR TO BEGINNING CONSTRUCTION. ONCE CONSTRUCTION HAS BEGUN, PROPOSED FIELD MODIFICATIONS SHALL BE SUBMITTED IN WRITING BY THE GENERAL CONTRACTOR TO THE ARCHITECT FOR REVIEW AND APPROVAL PRIOR TO BEING INCORPORATED INTO THE WORK.
- THE AGREEMENT OF DESIGN SHALL NOT CONTROL THE GENERAL CONTRACTOR IN DIVIDING THE WORK AMONG GENERAL CONTRACTORS OR SUBS. THE SEQUENCE OF WORK TO BE PERFORMED BY ANY TRADE.
- SEVERAL BUSINESS OCCUPANCY ARE NEARBY THE PROJECT. ALL CONTRACTORS SHALL CONDUCT WORK IN MANNER THAT WILL MINIMIZE DISRUPTION TO OTHER BUSINESS OPERATIONS.
- THE GENERAL CONTRACTOR SHALL PROVIDE TEMPORARY BARRICADES AND OTHER FORMS OF PROTECTION AS REQUIRED TO PROTECT THE PUBLIC FROM INJURY DURING CONSTRUCTION.
- THE GENERAL CONTRACTOR SHALL PROVIDE BY-PASS CONNECTIONS AS NECESSARY TO MAINTAIN CONTINUITY OF SERVICES TO LOCAL BUSINESS NEAR THE PROJECT. THE GENERAL CONTRACTOR SHALL PROVIDE A MINIMUM OF 72 HOURS ADVANCE NOTICE TO THE OWNER, TENANTS AND NEARBY OWNERS IF SHUT-DOWN OF SERVICES IS NECESSARY.
- GENERAL CONTRACTOR SHALL PROTECT FROM DAMAGE, EXISTING WORK THAT IS TO REMAIN AND SHALL IMMEDIATELY REPAIR DAMAGES CAUSED TO EXISTING FACILITIES.
- THE GENERAL CONTRACTOR SHALL CONDUCT WORK IN A MANNER TO ASSURE MINIMUM INTERFERENCE WITH ROADS, STREETS, WALKS, AND OTHER ADJACENT OCCUPIED FACILITIES. THE CONTRACTORS SHALL NOT CLOSE, BLOCK OR OTHERWISE OBSTRUCT STREETS, WALKS, OR OTHER OCCUPIED OR USED FACILITIES WITHOUT WRITTEN PERMISSION FROM THE LANDLORD/OWNER OR AUTHORITIES HAVING JURISDICTION.
- THE CONTRACTORS SHALL NOT SCALE DRAWINGS. ANY DIMENSIONAL CLARIFICATION SHALL BE MADE BY THE ARCHITECT UPON WRITTEN NOTIFICATION FROM THE GENERAL CONTRACTOR.
- ALL BIDDING CONTRACTORS SHALL VISIT THE "PROJECT" TO REVIEW EXISTING CONDITIONS AND SCOPE OF WORK PRIOR TO SUBMITTING BIDS.
- ALL CONTRACTORS SHALL PROVIDE ALL MATERIALS, EQUIPMENT, TOOLS, TRANSPORTATION AND LABOR REQUIRED TO COMPLETE THE WORK INDICATED IN THE CONSTRUCTION DOCUMENTS.
- THE LANDLORD/OWNER, ARCHITECT AND AGENTS THEREOF ASSUME NO RESPONSIBILITY FOR THE DISCOVERY, PRESENCE, HANDLING, REMOVAL OR DISPOSAL OF ANY HAZARDOUS MATERIALS, INCLUDING ASBESTOS AND PCB'S. THE GENERAL CONTRACTOR SHALL NOTIFY THE OWNER IMMEDIATELY IF SUCH MATERIALS ARE DISCOVERED. (NOT APPLICABLE).
- IF UNANTICIPATED MECHANICAL, ELECTRICAL OR STRUCTURAL ELEMENTS WHICH CONFLICT WITH INTENDED FUNCTION OR DESIGN ARE ENCOUNTERED, THE GENERAL CONTRACTOR SHALL IMMEDIATELY INVESTIGATE AND MEASURE BOTH NATURE AND EXTENT OF THE CONFLICT, AND SUBMIT A REPORT TO THE OWNER AND ARCHITECT FOR REVIEW AND DIRECTION PRIOR TO CONTINUING WITH THE WORK.
- ALL CONTRACTORS SHALL REFER TO CIVIL, STRUCTURAL, MECHANICAL, PLUMBING, FIRE PROTECTION AND ELECTRICAL DRAWINGS FOR ADDITIONAL NEW WORK REQUIREMENTS.
- THE DRAWINGS ARE COMPLEMENTARY; WHAT IS REQUIRED BY ONE, SHALL BE BINDING AS IF REQUIRED BY ALL.
- UPON COMPLETION OF THE WORK, ALL CONTRACTORS SHALL REMOVE TOOLS, EQUIPMENT AND CONSTRUCTION DEBRIS FROM THE BUILDING AND SITE. PROJECT AREA, INTERIOR AND EXTERIOR, TO BE LEFT BROOM CLEAN.

CODE DATA

- APPLICABLE CODES:**
 - 2012 INTERNATIONAL BUILDING CODE WITH AMENDMENTS (2014, 2015, 2017)
 - 2012 INTERNATIONAL FIRE CODE WITH AMENDMENTS (2014)
 - 2012 INTERNATIONAL PLUMBING CODE WITH AMENDMENTS (2014, 2015)
 - 2012 INTERNATIONAL MECHANICAL CODE WITH AMENDMENTS (2014, 2015)
 - 2017 NATIONAL ELECTRICAL CODE
 - 2009 INTERNATIONAL ENERGY CONSERVATION CODE WITH AMENDMENTS (2011, 2012)
 - 2010 ADA GUIDELINES
 - CHAPTER 120-3-20, ACCESSIBILITY CODE FOR BUILDINGS AND FACILITIES
 - CHAPTER 120-3-3, RULES AND REGULATIONS FOR STATE MINIMUM FIRE SAFETY STANDARDS
 - 2012 NFPA 101-LIFE SAFETY CODE.
- OCCUPANCY CLASSIFICATION:**
 - USE GROUP: M - MERCANTILE
- CONSTRUCTION TYPE CLASSIFICATION:**
 - TYPE IIB; NON COMBUSTIBLE (UNLIMITED AREA)
- DOOR OPERATION (IBC SECTION 1008.1.9):**
 - ALL MEANS OF EGRESS DOORS SHALL BE READILY OPENABLE FROM THE EGRESS SIDE WITHOUT THE USE OF A KEY OR SPECIAL KNOWLEDGE OR EFFORT.
- EXIT ACCESS TRAVEL DISTANCE (IBC TABLE 1016.2 AND NFPA 101):**
 - TRAVEL DISTANCE WITH SPRINKLER SYSTEM = 300'
- FIRE PROTECTION AND ALARMS:**
 - ANCHOR 2B AND RETAIL 2C SHALL INCLUDE A FIRE PROTECTION AND FIRE ALARM SYSTEM. THE FACP FOR ANCHOR 2B SHALL BE LOCATED IN ANCHOR 2B AND THE FACP FOR RETAIL 2C SHALL BE LOCATED IN THE LANDLORD'S ROOM IN RETAIL 2C.
- FIRE RESISTANCE RATINGS FOR BUILDING ELEMENTS (TABLE 601):**
 - PRIMARY STRUCTURAL FRAME - 0 HR.
 - BEARING WALLS - EXTERIOR: 0 HR. (NOT LESS THAN RATING BASED ON FIRE SEPARATION DISTANCE (TABLE 602). FIRE SEPARATION DISTANCE FOR ANCHOR 2B AND RETAIL 2C GREATER THAN 30'.
 - ROOF CONSTRUCTION - 0 HR.

ENERGY CONSERVATION CODE- BUILDING ENVELOPE

- THE BUILDING THERMAL ENVELOPE DESIGN WAS COMPLETED USING THE PRESCRIPTIVE METHOD, TABLE 502.2(1), AND TABLE 502.3 FOR CLIMATE ZONE 3.
- TABLE 502.2(1)**
- ROOFS:**
 - INSULATION ENTIRELY ABOVE DECK: R-20 c.i.
 - WALLS ABOVE GRADE:**
 - MASS: R-7.6 c.i.
 - METAL FRAMED: R-13 AND R-3.8 c.i.
 - SLAB-ON-GRADE FLOORS:**
 - UNHEATED SLABS: - NR
 - OPAQUE DOORS:**
 - SWINGING: U-0.70 (R-1.43)
 - ROLL-UP OR SLIDING: U-1.45 (R-0.87)
- TABLE 502.3**
- BUILDING ENVELOPE REQUIREMENTS: FENESTRATION
- U-FACTOR**
 - CURTAIN WALL/ STOREFRONT: 0.60 (R-1.67); PROVIDED: (R-2.04)
 - ENTRANCE DOORS: 0.90 (R-1.11); PROVIDED: U-0.90 (R-2.04)
 - SHGC**
 - 0.33 (0.25 < P.F. < 0.5)



2635 Butterfield Road Suite 233N
 Oak Brook, Illinois 60523
 Phone: 630-230-1620 www.dzarth.com

© 2019 D.Z.A. ASSOCIATES, INC. THE ARCHITECT SHALL BE DEEMED THE AUTHOR OF THIS DOCUMENT AND OTHER WORK, INCLUDING COPYRIGHT.

Rev. No.	Description	Date
▲	ISSUED FOR BID AND PERMIT	03/29/19
▲	ISSUED FOR BID	05/30/19
▲	RE-ISSUED FOR BID AND PERMIT	10/16/20



ANCHOR 2B AND RETAIL 2C

1454 AND 1460 OLD SALEM ROAD
 CONYERS, GEORGIA

RETAIL 2C - FLOOR PLAN, KEYNOTES, GENERAL NOTES AND CODE DATA

Date	Rev.	Sheet No.
03/29/19	L.P.	A1.2
Project No.	By/Rev	(2)
18.110	H.Z.	